

FAU RITE.	SECTION	COUNTY	TOTAL SHEETS	SHEET NO.
1703	08-00025-00-RS	Cook	010	001
STA.		TO STA.		
FED. ROAD DIST. NO. 1		ILLINOIS	FED. AID PROJECT M-9003 (132)	

CONTRACT NO. 63110

STATE OF ILLINOIS
DEPARTMENT OF TRANSPORTATION
DIVISION OF HIGHWAYS

PLANS FOR PROPOSED FEDERAL AID HIGHWAY

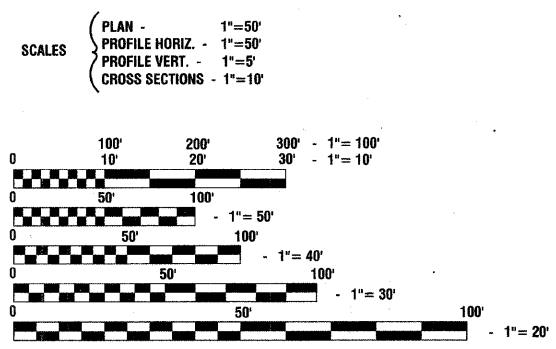
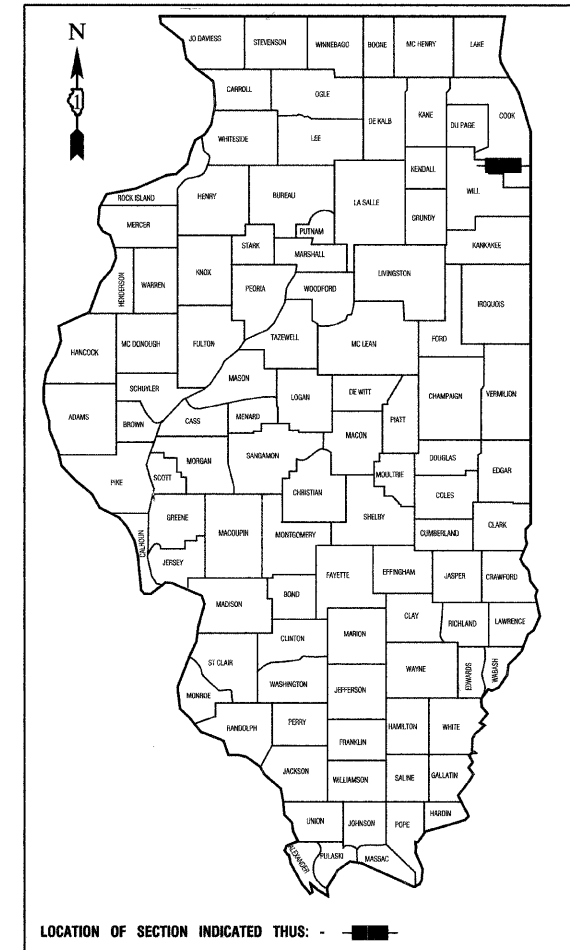
FAU 1703 / 201ST STREET
TORRENCE AVENUE TO BURNHAM AVENUE
LOCAL AGENCY PAVEMENT PRESERVATION
STREET RESURFACING
PROJECT: M-9003 (132)
SECTION NO.: 08-00025-00-RS
JOB NO.: C-91-159-09
VILLAGE OF LYNWOOD
COOK COUNTY

INDEX OF SHEETS

- 1 COVER SHEET, INDEX OF SHEETS, LOCATION MAP
INDEX OF STATE STANDARDS
- 2 SUMMARY OF QUANTITIES & GENERAL NOTES
- 3 TYPICAL CROSS SECTION
- 4-5 PAVEMENT PLAN
- 6-7 STRIPING PLAN
- 8-10 DISTRICT 1 STANDARD DETAILS

HIGHWAY STANDARDS

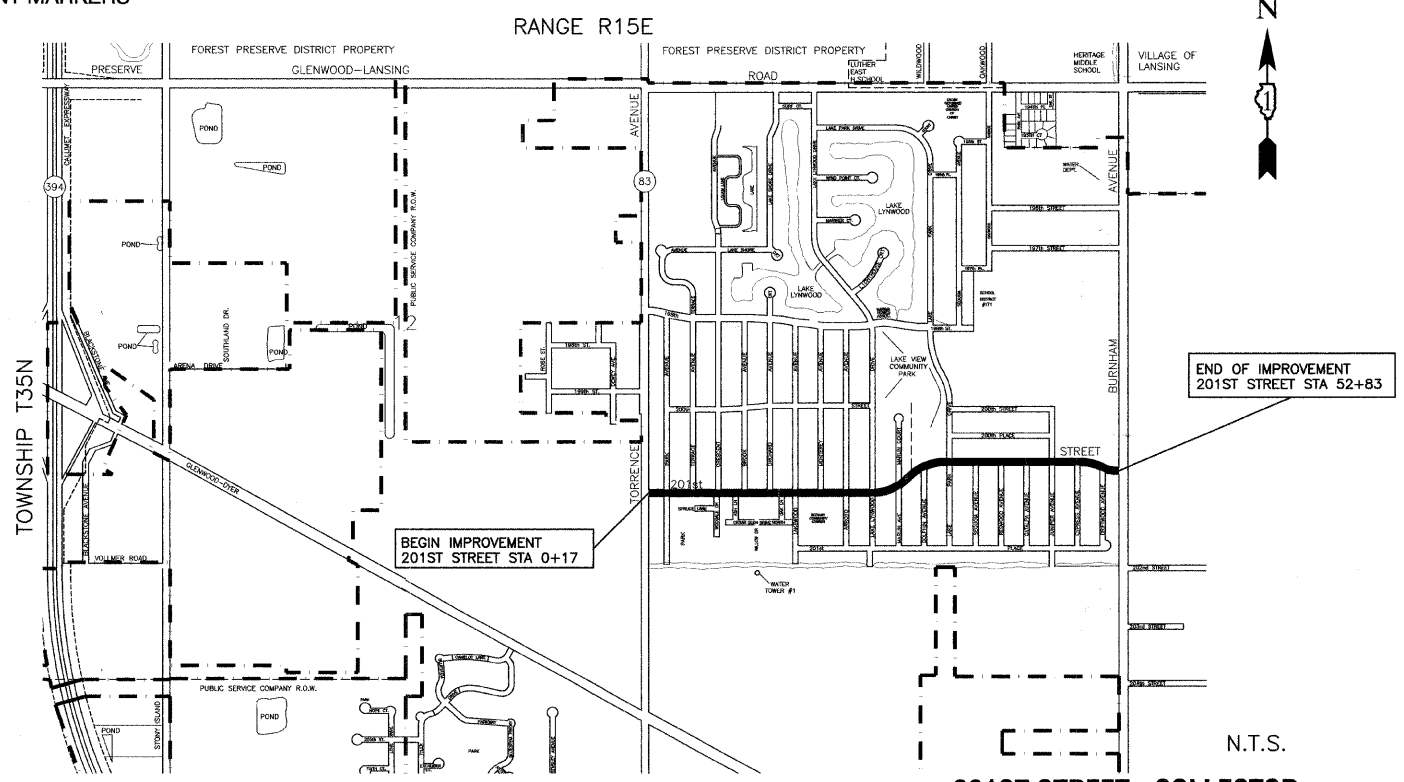
- 000001-05 STANDARD STANDARDS, ABBREVIATIONS AND PATTERNS
- 280001-04 TEMPORARY EROSION CONTROL SYSTEMS
- 424001-05 CURB RAMPS FOR SIDEWALK
- 442201-03 CLASS C AND D PATCHES
- 606001-04 CONCRETE CURB AND COMBINATION CONCRETE CURB & GUTTER
- 701501-05 URBAN LANE CLOSURE 2-L, 2-W, UNDIVIDED
- 701601-06 URBAN LANE CLOSURE, MULTILANE INTERSECTION
- 701701-06 URBAN LANE CLOSURE, MULTILANE INTERSECTION
- 701801-04 LANE CLOSURE, MULTILANE, 1W OR 2W, CROSSWALK OR SIDEWALK CLOSURE,
- 701901-01 TRAFFIC CONTROL DEVICES
- 780001-02 TYPICAL PAVEMENT MARKINGS
- 781001-03 TYPICAL APPLICATIONS RAISED REFLECTIVE PAVEMENT MARKERS
- 886001-01 DETECTOR LOOP INSTALLATIONS
- 886006-01 TYPICAL LAYOUT FOR DETECTION LOOPS



FULL SIZE PLANS HAVE BEEN PREPARED USING STANDARD ENGINEERING SCALES, REDUCED SIZED PLANS WILL NOT CONFORM TO STANDARD SCALES, IN MAKING MEASUREMENTS ON REDUCED PLANS, THE ABOVE SCALES MAY BE USED.

J. U. L. I. E.
JOINT UTILITY LOCATION INFORMATION FOR EXCAVATION
1 - 800 - 892 - 0123 or 811

CONTRACT NO. 63110



LOCATION MAP

GROSS LENGTH=5,266 FEET=1.00 MILES
NET LENGTH=5,266 FEET=1.00 MILES

201ST STREET - COLLECTOR

2008 ADT - 9,000
2030 ADT - 9,000
POSTED SPEED LIMIT - 35 mph
DESIGN SPEED LIMIT - 35 mph

STATE OF ILLINOIS DEPARTMENT OF TRANSPORTATION
DIVISION OF HIGHWAYS

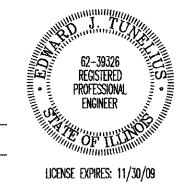
Approved: 12/18/2008
Engel Addline
President, Village of Lynwood

Passed: DECEMBER 29, 2008
Christina Hoer
District 1 Engineer of Local Roads & Streets

Released for Bid Based on Limited Review: DECEMBER 29, 2008
Diana M. O'Keefe
Deputy Director of Highways, Region 1 Engineer

**PRINTED BY THE AUTHORITY OF
THE STATE OF ILLINOIS**

PREPARED BY OR UNDER THE DIRECT SUPERVISION OF:
Edward J. Tundus
12-18-2008



FIELD ENGINEER: --- MELCHOR MANGOBA --- 847-705-4408
CONSULTANTS: ROBINSON ENGINEERING, LTD. 708-331-6700
CONTACT ENGINEER: --- RON SMITH

SUMMARY OF QUANTITIES					PAVEMENT	MARKINGS	SIGNS	LANDSCAPE	LIGHTS	SIGNALS	TRAINING
S.I.	CODE NO.	PAY ITEM	UNIT	QUAN	CONSTRUCTION TYPE CODE						
					I000	SFTY-1D	Y002-1C	Y003	Y030-1E	Y031	Y080
	40600100	BITUMINOUS MATERIALS (PRIME COAT)	GALLON	2200	2200						
	40600895	CONSTRUCTING TEST STRIP	EACH	2	2						
	40600982	HOT-MIX ASPHALT SURFACE REMOVAL - BUTT JOINT	SQ YD	950	950						
	40603335	HOT-MIX ASPHALT SURFACE COURSE, MIX "D", N50	TON	1850	1850						
	44000157	HOT-MIX ASPHALT SURFACE REMOVAL, 2"	SQ YD	22100	22100						
	44000500	COMBINATION CURB AND GUTTER REMOVAL	FOOT	700	700						
	44201717	CLASS D PATCHES, TYPE II, 6 INCH	SQ YD	10	10						
	44201721	CLASS D PATCHES, TYPE III, 6 INCH	SQ YD	25	25						
	44201723	CLASS D PATCHES, TYPE IV, 6 INCH	SQ YD	450	450						
	60250200	CATCH BASINS TO BE ADJUSTED	EACH	36	36						
	60250400	CATCH BASINS TO BE ADJUSTED WITH NEW TYPE 1 FRAME, OPEN LID	EACH	1	1						
	60255500	MANHOLES TO BE ADJUSTED	EACH	4	4						
	60603800	COMBINATION CONCRETE CURB AND GUTTER, TYPE B-6.12	FOOT	680	680						
	67100100	MOBILIZATION	L SUM	1	1						
	70102620	TRAFFIC CONTROL AND PROTECTION, STANDARD 701501	L SUM	1	1						
	70102635	TRAFFIC CONTROL AND PROTECTION, STANDARD 701701	L SUM	1	1						
	70102640	TRAFFIC CONTROL AND PROTECTION, STANDARD 701801	L SUM	1	1						
	70300100	SHORT-TERM PAVEMENT MARKING	FOOT	3500	3500						
*	78000200	THERMOPLASTIC PAVEMENT MARKING - LINE 4"	FOOT	7000	7000						
*	78000650	THERMOPLASTIC PAVEMENT MARKING - LINE 24"	FOOT	20	20						
	X4067107	POLYMERIZED LEVELING BINDER (MACHINE METHOD), IL-4.75, N50	TON	900	900						

* - INDICATES SPECIALTY ITEMS

FILE NAME = 07585-QUAN-01 - IDOT P01	USER NAME =	DESIGNED -- RS	REVISED --	STATE OF ILLINOIS DEPARTMENT OF TRANSPORTATION	201ST STREET RESURFACING TORRENCE AVENUE TO BURNHAM AVENUE SUMMARY OF QUANTITIES & GENERAL NOTES			F.A.U. RTE. 1703	SECTION 08-00025-00-RS	COUNTY COOK	TOTAL SHEETS 010	SHEET NO. 002
	PLOT SCALE =	CHECKED -- RS	REVISED --		SCALE: NONE	SHEET NO. 002 OF 010 SHEETS	STA.	TO STA.	FED. ROAD DIST. NO. 1	ILLINOIS	FED. AID PROJECT M-9003 (132)	CONTRACT NO. 63110
	PLOT DATE = 12-18-08	DRAWN -- PS	REVISED --									
		CHECKED -- PS	REVISED --									

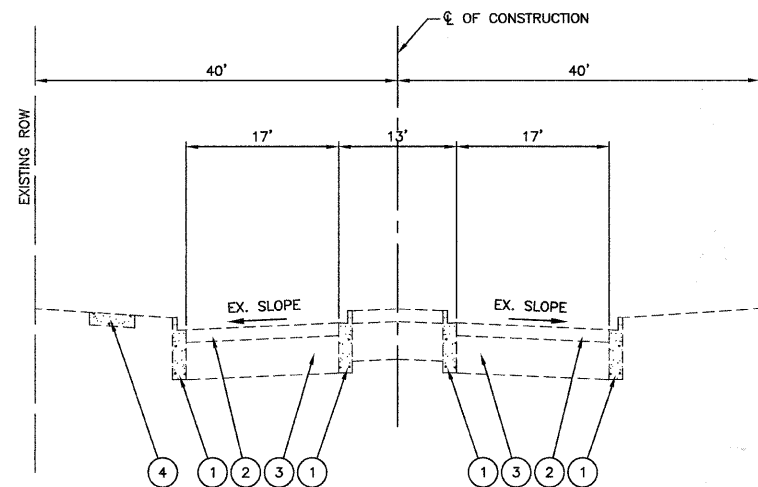
LEGEND

- ① EXISTING CURB & GUTTER TO BE REMOVED AT LOCATIONS AS SHOWN ON PLANS OR DIRECTED BY ENGINEER
- ② HOT-MIX ASPHALT SURFACE REMOVAL, 2"
- ③ EXISTING BITUMINOUS BASE COURSE TO REMAIN, ±10"
- ④ EXISTING P.C. CONCRETE SIDEWALK
- ⑤ HOT-MIX ASPHALT SURFACE COURSE, MIX D, N50 1½"
- ⑥ COMBINATION CONCRETE CURB & GUTTER, B6.12 AT LOCATIONS AS SHOWN ON PLANS OR DIRECTED BY ENGINEER
- ⑦ POLYMERIZED LEVELING BINDER (MACHINE METHOD), IL-4.75, N50, 3/4"

HOT-MIX ASPHALT MIXTURE REQUIREMENTS

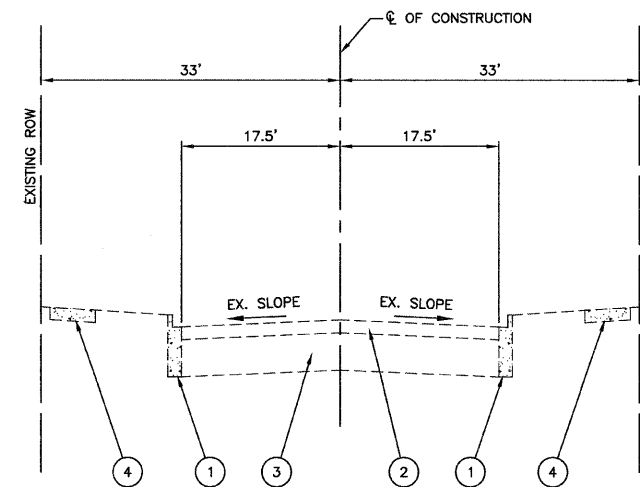
ITEM	AC TYPE	VOIDS
RESURFACING		
HOT-MIX ASPHALT SURFACE COURSE, MIX D, N50 (IL-9.5 mm), 1 1/2"	PG 64-22	4% @ 50 GYR
POLYMERIZED LEVELING BINDER (MACHINE METHOD), IL-4.75, N50, 3/4"	SBS/SBR PG 76-28/-22	4% @ 50 GYR
PATCHING		
CLASS D PATCHES, TYPE II, III, IV, 6"	PG 64-22*	4% @ 70 GYR

NOTE:
 THE UNIT WEIGHT USED TO CALCULATE ALL HOT-MIX ASPHALT SURFACE MIXTURE QUANTITIES IS 112 LBS/SY/IN.
 *WHEN RAP EXCEEDS 20%, THE NEW ASPHALT BINDER IN THE MIX SHALL BE PG 58-22



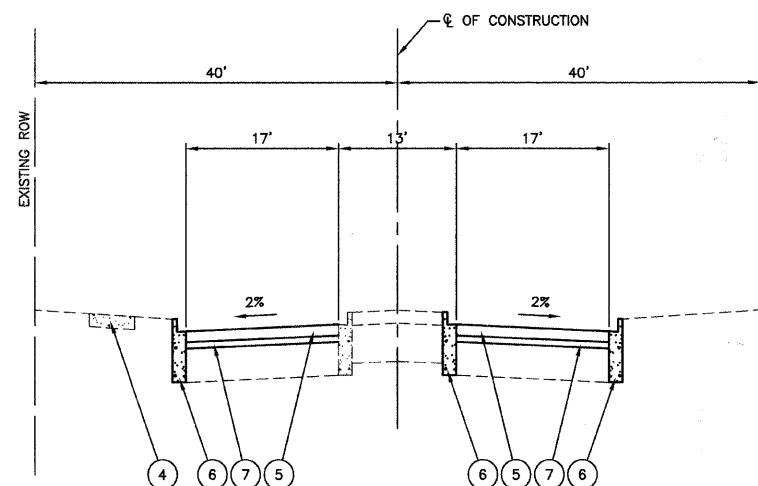
EXISTING TYPICAL CROSS SECTION

STA. 0+17 TO 2+40



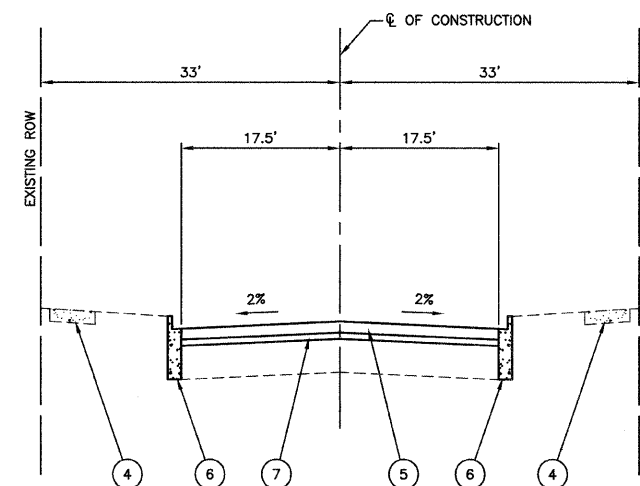
EXISTING TYPICAL CROSS SECTION

STA. 2+40 TO 52+83



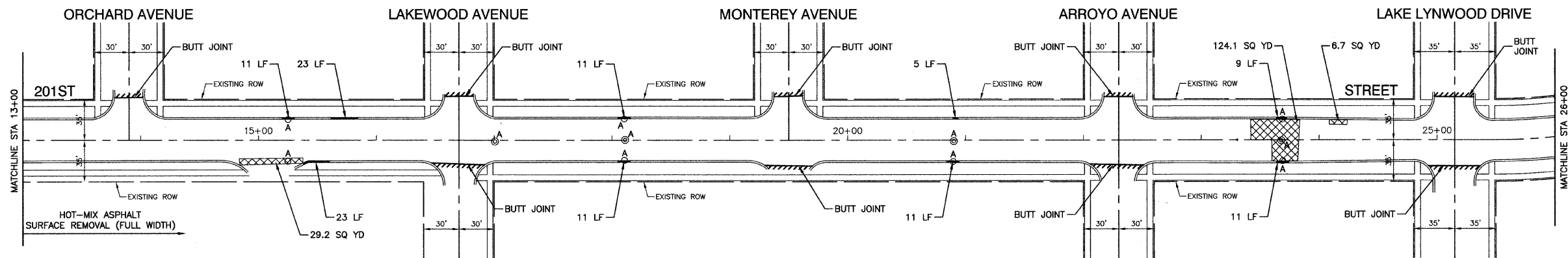
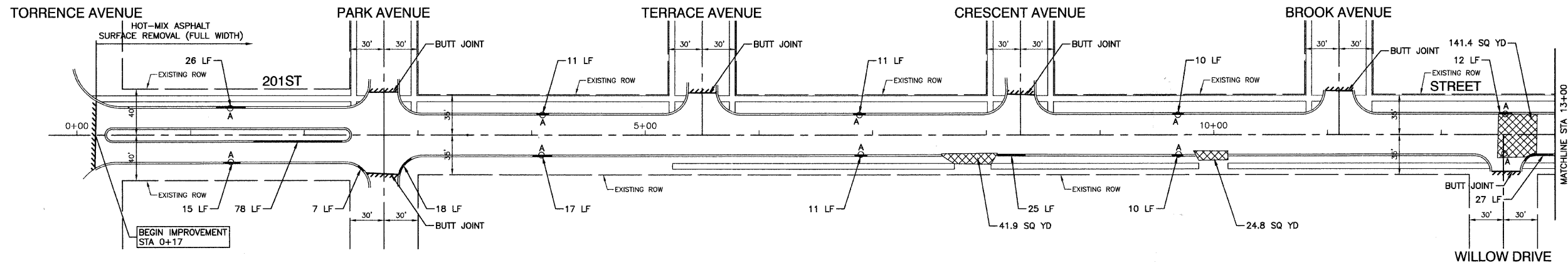
PROPOSED TYPICAL CROSS SECTION

STA. 0+17 TO 2+40



EXISTING TYPICAL CROSS SECTION

STA. 2+40 TO 52+83

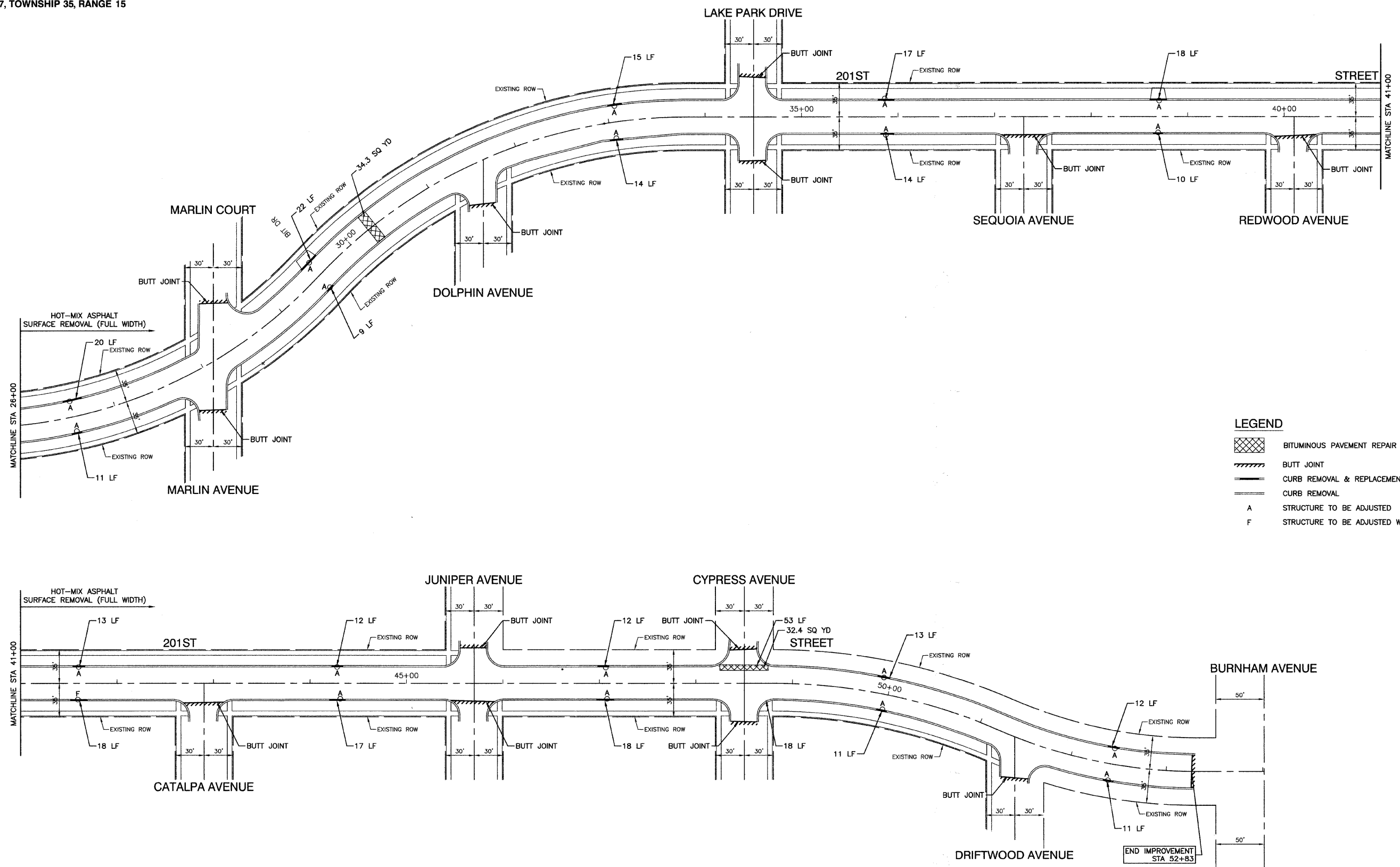


LEGEND

	BITUMINOUS PAVEMENT REPAIR
	BUTT JOINT
	CURB REMOVAL & REPLACEMENT
	CURB REMOVAL
	STRUCTURE TO BE ADJUSTED
	STRUCTURE TO BE ADJUSTED W/ NEW FRAME

FILE NAME = 07585-PLAN-01 - IDOT P01	USER NAME =	DESIGNED -- RS	REVISED --	STATE OF ILLINOIS DEPARTMENT OF TRANSPORTATION	201ST STREET RESURFACING TORRENCE AVENUE TO BURNHAM AVENUE PAVEMENT PLAN			F.A.U. RTE. 1703	SECTION 08-00025-00-RS	COUNTY COOK	TOTAL SHEETS 010	SHEET NO. 004	
	PLOT SCALE =	DRAWN -- PS	REVISED --		SCALE: 1"=50'	SHEET NO. 004 OF 010 SHEETS	STA. 0+00 TO STA. 26+00	CONTRACT NO. 63110					
	PLOT DATE = 12-18-08	CHECKED -- PS	REVISED --		FED. ROAD DIST. NO. 1 ILLINOIS FED. AID PROJECT M-9003 (132)								

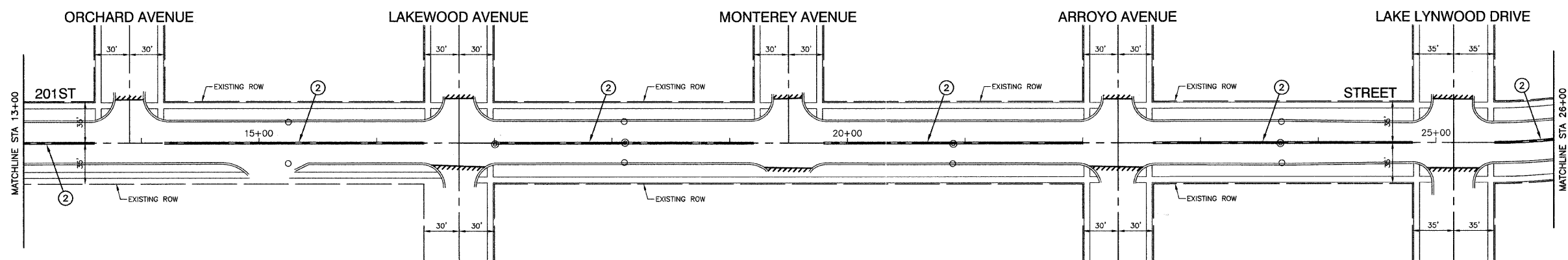
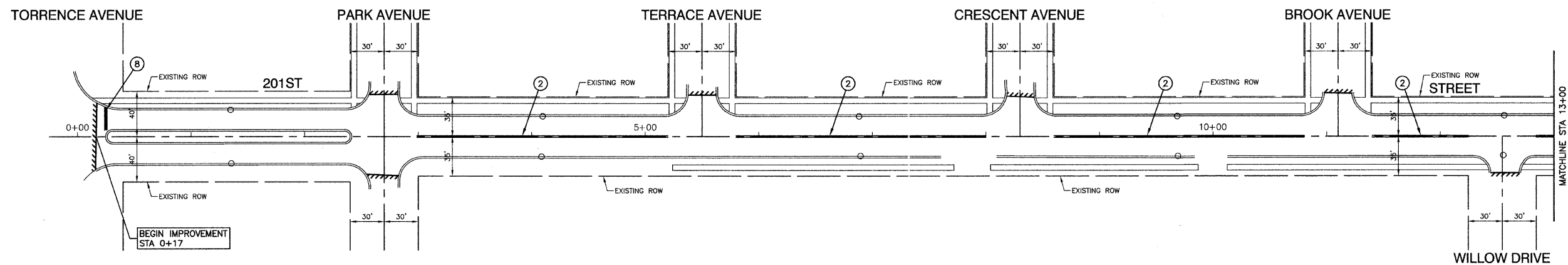
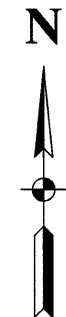
SECTION 7, TOWNSHIP 35, RANGE 15



LEGEND

	BITUMINOUS PAVEMENT REPAIR
	BUTT JOINT
	CURB REMOVAL & REPLACEMENT
	CURB REMOVAL
A	STRUCTURE TO BE ADJUSTED
F	STRUCTURE TO BE ADJUSTED W/ NEW FRAME

FILE NAME = 07585-PLAN-01 - IDOT P02 USER NAME = PLOT SCALE = PLOT DATE = 12-19-08	DESIGNED -- RS	REVISED --	STATE OF ILLINOIS DEPARTMENT OF TRANSPORTATION	201ST STREET RESURFACING TORRENCE AVENUE TO BURNHAM AVENUE PAVEMENT PLAN		F.A.U. RTE. 1703	SECTION 08-00025-00-RS	COUNTY COOK	TOTAL SHEETS 010	SHEET NO. 005	
	CHECKED -- RS	REVISED --		SCALE: 1"=50' SHEET NO. 005 OF 010 SHEETS STA. 26+00 TO STA. 54+00		FED. ROAD DIST. NO. 1	ILLINOIS	FED. AID PROJECT M-9003 (132)	CONTRACT NO. 63110		
	DRAWN -- PS	REVISED --									
	CHECKED -- PS	REVISED --									



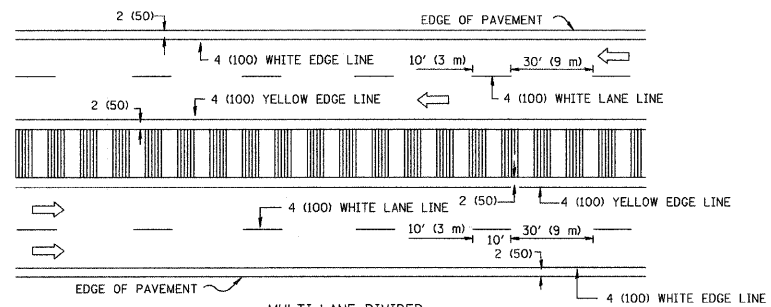
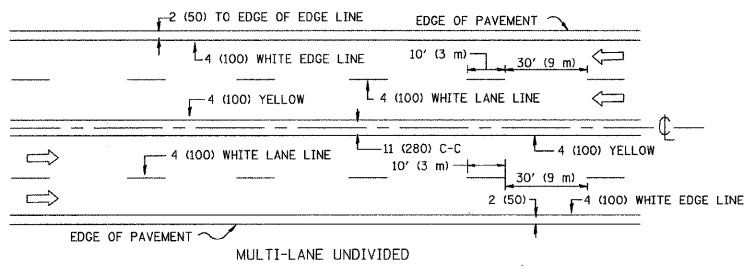
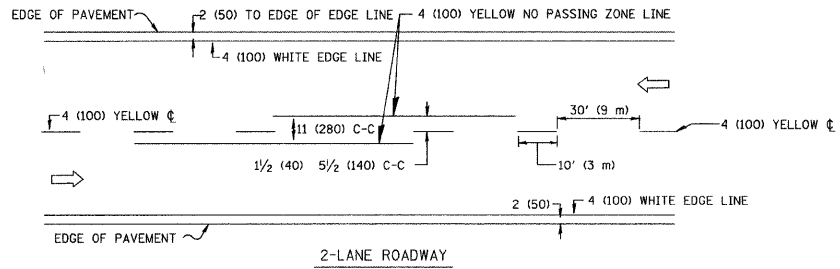
PAVEMENT MARKING LEGEND

- | | | |
|--|--|--|
| ① WHITE LETTERS & SYMBOLS | ⑥ 6" WHITE SKIP-DASH LINE (2' LINE - 6' SPACE) | ⑫ 4" WHITE SKIP - DASH LINE (10' LINE - 30' SPACE) |
| ② DOUBLE 4" YELLOW CENTERLINE (11" C/C) | ⑦ 12" YELLOW DIAGONAL LINE (20' C/C) | ⑬ 4" YELLOW SKIP - DASH LINE (10' LINE - 30' SPACE) |
| ③ DOUBLE YELLOW MEDIAN OUTLINE (11" C/C) | ⑧ 24" WHITE STOP BAR | ◀ ONE-WAY AMBER MARKER
40' C/C UNLESS OTHERWISE INDICATED |
| ④ 4" YELLOW LINE | ⑨ 6" WHITE CROSSWALK (6' C/C) | ◀ ONE-WAY CRYSTAL MARKER
80' C/C UNLESS OTHERWISE INDICATED |
| ⑤ 4" WHITE EDGE LINE | ⑩ 6" WHITE CROSSWALK (10' C/C) | ◆ TWO-WAY AMBER MARKER
40' C/C UNLESS OTHERWISE INDICATED |
| ⑥ 6" WHITE LANE LINE | ⑪ 12" WHITE LINE (45° ANGLE, 20' C/C) | ⊠ TRAFFIC SIGN |

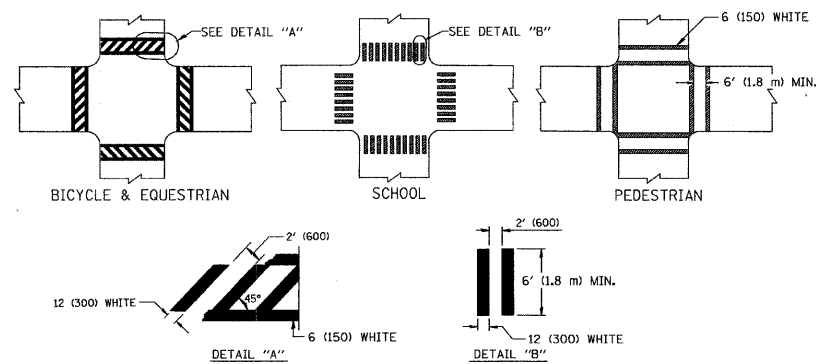
FILE NAME = 07585-PLAN-01 - IDOT P03	USER NAME =	DESIGNED -- RS	REVISED --	STATE OF ILLINOIS DEPARTMENT OF TRANSPORTATION	201ST STREET RESURFACING TORRENCE AVENUE TO BURNHAM AVENUE STRIPING PLAN			F.A.U. RTE.	SECTION	COUNTY	TOTAL SHEETS	SHEET NO.
	PLOT SCALE =	CHECKED -- RS	REVISED --		1703	08-00025-00-RS	COOK	010	006			
PLOT DATE = 12-18-08	DRAWN -- PS	REVISED --			SCALE: 1"=50' SHEET NO. 006 OF 010 SHEETS STA. 0+00 TO STA. 26+00			CONTRACT NO. 63110				
	CHECKED -- PS	REVISED --			FED. ROAD DIST. NO. 1 ILLINOIS FED. AID PROJECT M-9003 (132)							

DATE	BY
REVISIONS	
PLANNED	
DESIGNED	
CHECKED	
DATE	BY
PLAN	
NOTE BOOK	
NO.	

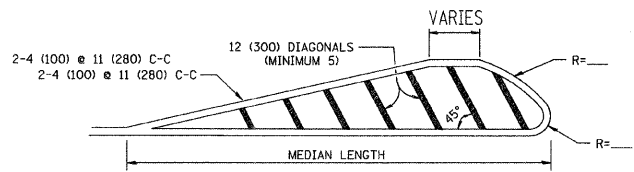
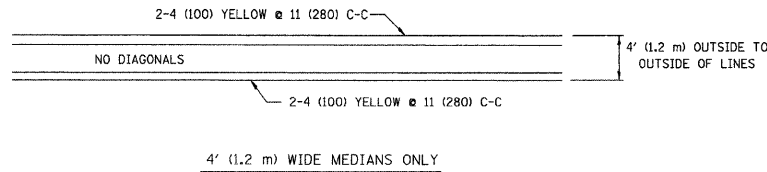
DATE	BY
PROFILE	
GRADES	
CHECKED	
DATE	BY
NOTE BOOK	
B.M. NOTED	



TYPICAL LANE AND EDGE LINE MARKING

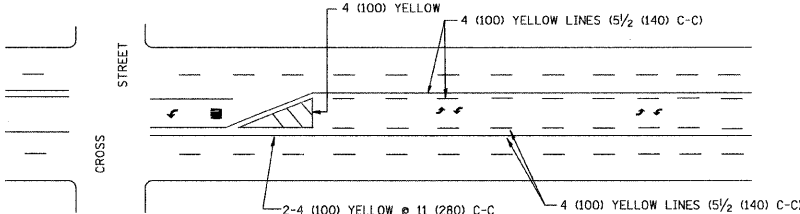


TYPICAL CROSSWALK MARKING

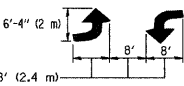


FOR MEDIAN LENGTHS WHERE DIAGONAL SPACING CANNOT BE ATTAINED, USE 5 (FIVE) EQUALLY SPACED DIAGONAL LINES.
 DIAGONAL LINE SPACING: 50' (15 m) C-C (LESS THAN 30MPH (50 km/h))
 75' (25 m) C-C (30MPH (50 km/h) TO 45MPH (70 km/h))
 150' (45 m) C-C (MORE THAN 45MPH (70 km/h))

MEDIANS OVER 4' (1.2 m) WIDE

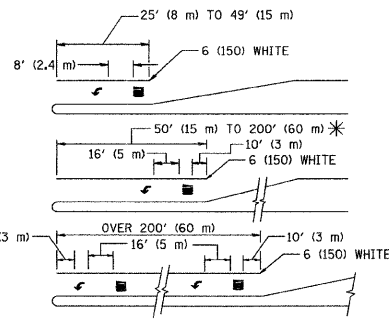


A MINIMUM OF TWO PAIRS OF TURN ARROWS SHALL BE USED, WHITE IN COLOR. ADDITIONAL PAIRS SHALL BE PLACED AT 200' (60 m) TO 300' (90 m) INTERVALS.



MEDIAN WITH TWO-WAY LEFT TURN LANE

TYPICAL PAINTED MEDIAN MARKING

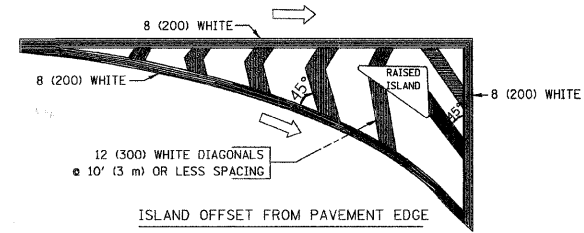


FULL SIZE LETTERS 8' (2.4 m) AND ARROWS SHALL BE USED.
 AREA = 15.6 SQ. FT. (1.5 m²) AREA = 20.8 SQ. FT. (1.9 m²)

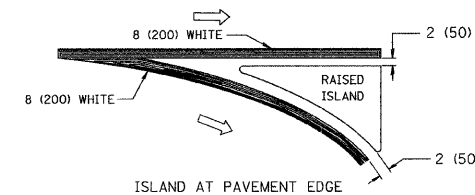
* TURN LANES IN EXCESS OF 400' (120 m) IN LENGTH MAY HAVE AN ADDITIONAL SET OF ARROW - "ONLY" INSTALLED MIDWAY BETWEEN THE OTHER TWO SETS OF ARROW - "ONLY".

TYPICAL LEFT (OR RIGHT) TURN LANE

TYPICAL TURN LANE MARKING



ISLAND OFFSET FROM PAVEMENT EDGE



ISLAND AT PAVEMENT EDGE

TYPICAL ISLAND MARKING

TYPE OF MARKING	WIDTH OF LINE	PATTERN	COLOR	SPACING / REMARKS
CENTERLINE ON 2 LANE PAVEMENT	4 (100)	SKIP-DASH	YELLOW	10' (3 m) LINE WITH 30' (9 m) SPACE
CENTERLINE ON MULTI-LANE UNDIVIDED PAVEMENT	2 @ 4 (100)	SOLID	YELLOW	11 (280) C-C
NO PASSING ZONE LINES: FOR ONE DIRECTION FOR BOTH DIRECTIONS	4 (100) 2 @ 4 (100)	SOLID SOLID	YELLOW YELLOW	5/2 (140) C-C FROM SKIP-DASH CENTERLINE 11 (280) C-C OMIT SKIP-DASH CENTERLINE BETWEEN
LANE LINES	4 (100) 5 (125) ON FREEWAYS	SKIP-DASH SKIP-DASH	WHITE WHITE	10' (3 m) LINE WITH 30' (9 m) SPACE
DOTTED LINES (EXTENSIONS OF CENTER, LANE OR TURN LANE MARKINGS)	SAME AS LINE BEING EXTENDED	SKIP-DASH	SAME AS LINE BEING EXTENDED	2' (600) LINE WITH 6' (1.8 m) SPACE
EDGE LINES	4 (100)	SOLID	YELLOW-LEFT WHITE-RIGHT	OUTLINE MOUNTABLE MEDIANS IN YELLOW; EDGE LINES ARE NOT USED NEXT TO BARRIER CURB
TURN LANE MARKINGS	6 (150) LINE; FULL SIZE LETTERS & SYMBOLS (8' (2.4m))	SOLID	WHITE	SEE TYPICAL TURN LANE MARKING DETAIL
TWO WAY LEFT TURN MARKING	2 @ 4 (100) EACH DIRECTION	SKIP-DASH AND SOLID	YELLOW	10' (3 m) LINE WITH 30' (9 m) SPACE FOR SKIP-DASH; 5/2 (140) C-C BETWEEN SOLID LINE AND SKIP-DASH LINE
	8' (2.4m) LEFT ARROW	IN PAIRS	WHITE	SEE TYPICAL TWO-WAY LEFT TURN MARKING DETAIL
CROSSWALK LINES (PEDESTRIAN) A. DIAGONALS (BIKE & EQUESTRIAN) B. LONGITUDINAL BARS (SCHOOL)	2 @ 6 (150) 12 (300) @ 45° 12 (300) @ 90°	SOLID SOLID SOLID	WHITE WHITE WHITE	NOT LESS THAN 6' (1.8 m) APART 2' (600) APART 2' (600) APART SEE TYPICAL CROSSWALK MARKING DETAILS.
STOP LINES	24 (600)	SOLID	WHITE	PLACE 4' (1.2 m) IN ADVANCE OF AND PARALLEL TO CROSSWALK, IF PRESENT. OTHERWISE PLACE AT DESIRED STOPPING POINT, PARALLEL TO CROSSROAD CENTERLINE, WHERE POSSIBLE
PAINTED MEDIANS	2 @ 4 (100) WITH 12 (300) DIAGONALS @ 45°	SOLID	YELLOW: TWO WAY TRAFFIC WHITE: ONE WAY TRAFFIC	11 (280) C-C FOR THE DOUBLE LINE SEE TYPICAL PAINTED MEDIAN MARKING.
CORE MARKING AND CHANNELIZING LINES	8 (200) WITH 12 (300) DIAGONALS @ 45°	SOLID	WHITE	DIAGONALS: 15' (4.5 m) C-C (LESS THAN 30MPH (50 km/h)) 20' (6 m) C-C (30MPH (50 km/h) TO 45MPH (70 km/h)) 30' (9 m) C-C (OVER 45MPH (70 km/h))
RAILROAD CROSSING	24 (600) TRANSVERSE LINES; "RR" IS 6' (1.8 m) LETTERS; 16 (400) LINE FOR "X"	SOLID	WHITE	SEE STATE STANDARD 780001 AREA OF: "R"=3.6 SQ. FT. (0.33 m ²) EACH "X"=54.0 SQ. FT. (5.0 m ²)
SHOULDER DIAGONALS	12 (300) @ 45°	SOLID	WHITE - RIGHT YELLOW - LEFT	50' (15 m) C-C (LESS THAN 30MPH (50 km/h)) 75' (25 m) C-C (30 MPH (50 km/h) TO 45MPH (70 km/h)) 150' (45 m) C-C (OVER 45MPH (70 km/h))

FOR FURTHER DETAILS ON PAVEMENT MARKING REFER TO STANDARD SPECIFICATIONS FOR ROAD AND BRIDGE CONSTRUCTION AND STATE STANDARD 780001.

All dimensions are in inches (millimeters) unless otherwise shown.

FILE NAME = W:\data\22x34\toi3.dgn	USER NAME = geglano	DESIGNED - EVERS	REVISED - T. RAMMACHER 10-27-94
		DRAWN -	REVISED - A. HOUSEH 10-09-96
07585-DTIS-01 - P03	PLOT SCALE = 50.000' / IN.	CHECKED -	REVISED - A. HOUSEH 10-17-96
	PLOT DATE = 1/4/2008	DATE - 03-19-90	REVISED - T. RAMMACHER 01-06-00

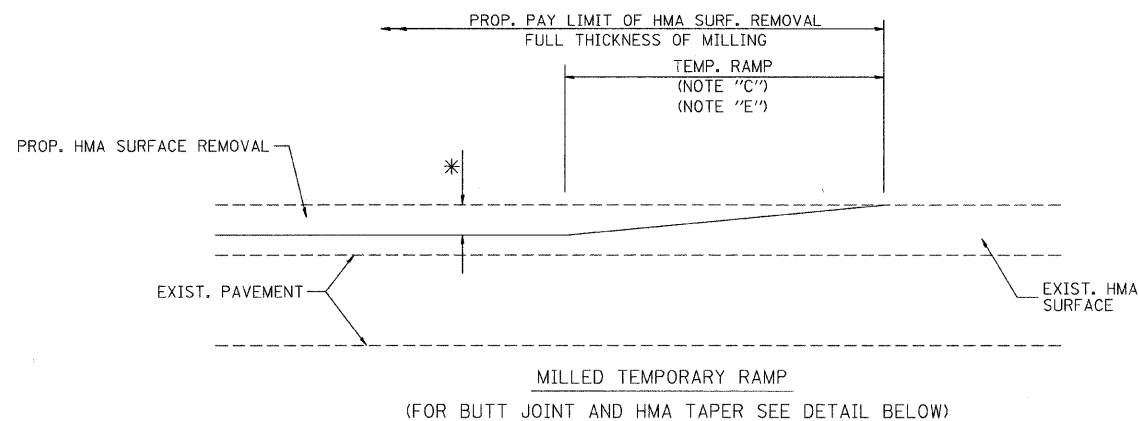
STATE OF ILLINOIS
DEPARTMENT OF TRANSPORTATION

DISTRICT ONE
TYPICAL PAVEMENT MARKINGS

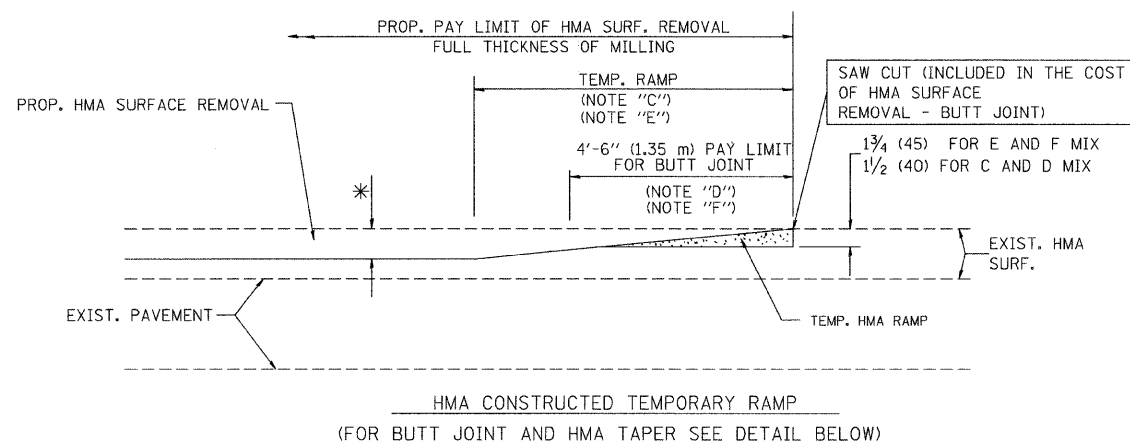
SCALE: NONE	SHEET NO. 008 OF 010 SHEETS	STA. TO STA.	F.A.U. 1703	SECTION 08-00025-00-RS	COUNTY COOK	TOTAL SHEETS 010	SHEET NO. 008
			TC-13		CONTRACT NO. 63110		
			FED. ROAD DIST. NO. 1	ILLINOIS	FED. AID PROJECT M-9003 (132)		

DATE	
BY	
DESIGNED	
DRAWN	
CHECKED	
PLotted	
FILE NAME	
NO.	

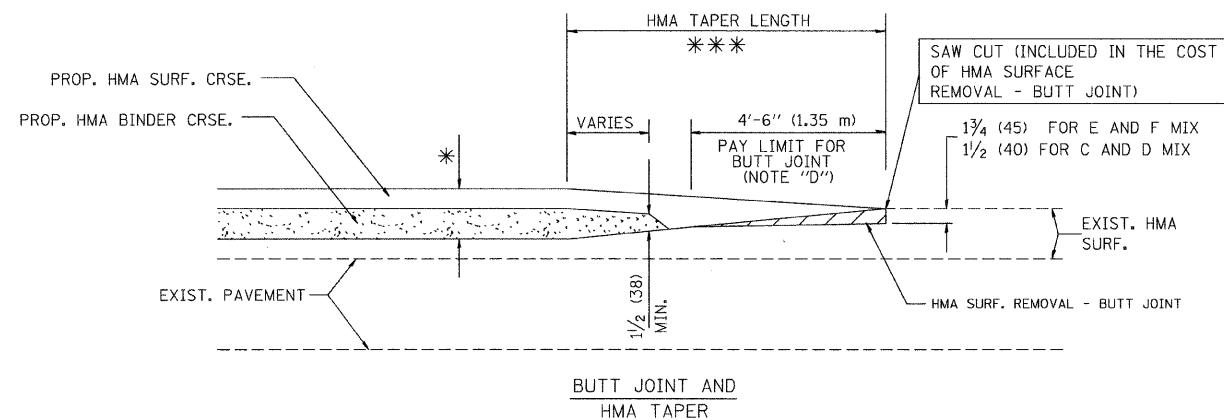
DATE	
BY	
DESIGNED	
DRAWN	
CHECKED	
PLotted	
FILE NAME	
NO.	



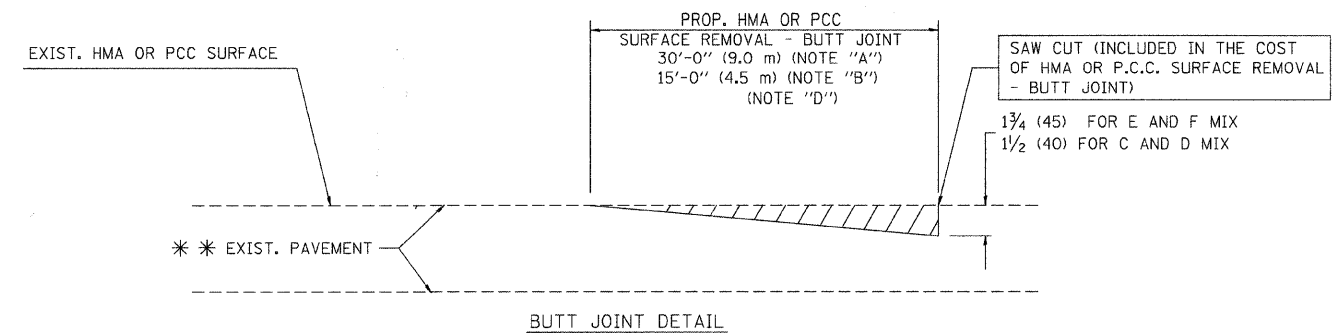
OPTION 1



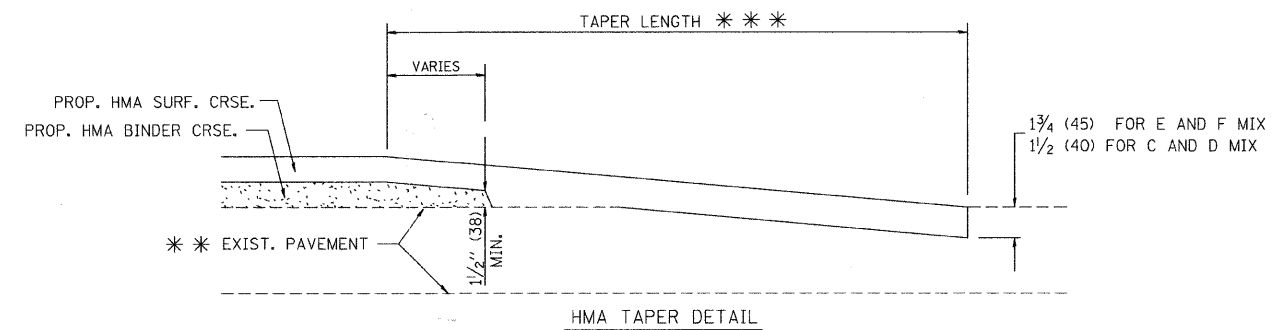
**OPTION 2
TYPICAL TEMPORARY RAMP**



**TYPICAL BUTT JOINT AND HMA TAPER
FOR MILLING AND RESURFACING**



BUTT JOINT DETAIL



HMA TAPER DETAIL

**TYPICAL BUTT JOINT AND HMA TAPER
FOR RESURFACING ONLY**

*** PC CONCRETE, HMA OR HMA RESURFACED PAVEMENT.

NOTES

- A: MAINLINE ROADWAYS AND MAJOR SIDE ROADS.
- B: MINOR SIDE ROADS.
- C: THE TEMP. RAMP SHALL BE CONSTRUCTED IMMEDIATELY UPON REMOVAL OF THE EXISTING HMA SURFACE.
- D: THE BUTT JOINT SHALL BE CONSTRUCTED IMMEDIATELY PRIOR TO PLACING THE PROPOSED HMA COURSES.
- E: TAPER THE TEMP. RAMP AT A RATE OF 3'-0" (900 mm) PER 1 INCH (25 mm) OF MILLING THICKNESS.
- F: INSTALLATION AND REMOVAL OF THE 4'-6" (1.35 m) TEMP. RAMP IS INCLUDED IN COST OF HMA SURFACE REMOVAL - BUTT JOINT
- G: SEE ARTICLE 406.08 AND 406.14 OF THE STANDARD SPECIFICATIONS FOR "HMA AND/OR PCC SURFACE REMOVAL, BUTT JOINT".
- * SEE TYPICAL SECTIONS FOR MILLING THICKNESS.
- *** 20'-0" (6.1 m) PER 1 (25) RESURFACING (NOTE "A")
10'-0" (3.0 m) PER 1 (25) RESURFACING (NOTE "B")

BASIS OF PAYMENT:

THE BUTT JOINT WILL BE PAID FOR AT THE CONTRACT UNIT PRICE PER SQUARE YARD (SQUARE METER) FOR "HOT-MIX ASPHALT SURFACE REMOVAL - BUTT JOINT" OR FOR "PORTLAND CEMENT CONCRETE SURFACE REMOVAL - BUTT JOINT".

ALL DIMENSIONS ARE IN INCHES (MILLIMETERS) UNLESS OTHERWISE SHOWN.

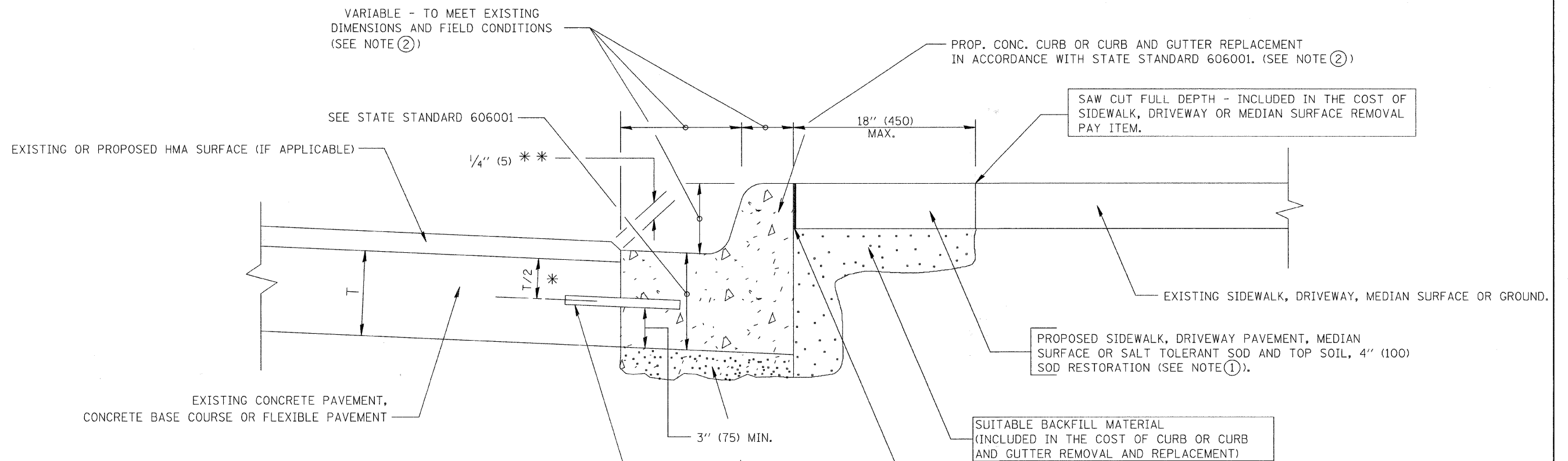
FILE NAME =	USER NAME = gaglianobt	DESIGNED - M. DE YONG	REVISED - R. SHAH 10-25-94
W:\d\st\d\22x34\bd32.dgn		DRAWN -	REVISED - A. ABBAS 03-21-97
		CHECKED -	REVISED - M. GOMEZ 04-06-01
07585-DTSL-01 - P01		DATE - 06-13-90	REVISED - R. BORO 01-01-07

**STATE OF ILLINOIS
DEPARTMENT OF TRANSPORTATION**

DISTRICT ONE BUTT JOINT AND HMA TAPER DETAILS		F.A.U. RTE.	SECTION	COUNTY	TOTAL SHEETS	SHEET NO.
SCALE: NONE		1703	08-00025-00-RS	COOK	010	009
SHEET NO. 009 OF 010 SHEETS		BD400-05 BD32		CONTRACT NO. 63110		
STA. TO STA.		FED. ROAD DIST. NO. 1 ILLINOIS FED. AID PROJECT M-9003 (132)				

DATE	BY
RESERVED	
ALIGNED	CHECKED
PLANNED	FILED
NOTE BOOK NO.	FILE NAME

DATE	BY
RESERVED	
GRADES	CHECKED
PLANNED	NOTED
NOTE BOOK NO.	



* 3" (75) MINIMUM FROM TOP AND BOTTOM OF THE CONCRETE PAVEMENT OR BASE COURSE.

** IF THE FINAL SURFACE OF THE PAVEMENT IS CONCRETE, THE GUTTER IS TO BE FLUSH WITH THE PAVEMENT.

NOTE: ① SIDEWALK, DRIVEWAY PAVEMENT OR MEDIAN SURFACE SHALL BE SIMILAR TO THE MATERIAL BEING REMOVED AND WILL BE PAID FOR SEPARATELY.

SALT TOLERANT SOD AND TOP SOIL, 4" (100) RESTORATION WILL NOT BE PAID FOR SEPARATELY, BUT SHALL BE INCLUDED IN THE COST OF CURB OR CURB AND GUTTER REMOVAL AND REPLACEMENT.

② CURB OR CURB AND GUTTER REPLACEMENT SHALL MATCH THE SHAPE OF THE EXISTING CURB OR CURB AND GUTTER UNLESS OTHERWISE SPECIFIED.

③ FOR CURB OR CURB AND GUTTER REMOVAL AND REPLACEMENT ADJACENT TO FLEXIBLE PAVEMENT DELETE EPOXY COATED TIE BARS.

④ LONGITUDINAL BARS, IF ENCOUNTERED IN THE EXISTING CURB OR CURB AND GUTTER, ARE NOT TO BE REPLACED. CUTTING AND REMOVING LONGITUDINAL BARS SHALL BE INCLUDED IN THE COST OF CURB OR CURB AND GUTTER REMOVAL AND REPLACEMENT.

⑤ THE COST OF HMA SURFACE REMOVAL IN THE EXISTING GUTTER FLAG SHALL BE INCLUDED IN THE COST OF THE CURB AND GUTTER REMOVAL AND REPLACEMENT.

⑥ THE REMOVAL AND REPLACEMENT OF THE EXISTING CURB OR CURB AND GUTTER SHALL BE DONE IN ACCORDANCE WITH THE APPLICABLE PORTIONS OF SECTION 440 AND 606 OF THE STANDARD SPECIFICATIONS.

⑦ THE LOCATIONS OF REMOVAL AND REPLACEMENT OF EXISTING CURB OR CURB AND GUTTER SHALL BE DETERMINED BY THE RESIDENT ENGINEER AT THE TIME OF CONSTRUCTION.

BASIS OF PAYMENT:

THIS WORK WILL BE PAID FOR AT THE CONTRACT UNIT PRICE PER FOOT (METER) FOR "CURB REMOVAL AND REPLACEMENT" OR "COMBINATION CONCRETE CURB AND GUTTER REMOVAL AND REPLACEMENT".

CURB OR CURB AND GUTTER REMOVAL AND REPLACEMENT

ALL DIMENSIONS ARE IN INCHES (MILLIMETERS) UNLESS OTHERWISE SHOWN.

FILE NAME = W:\statetd\22x34\bd24.dgn	USER NAME = gaglianobt	DESIGNED - A. HOUSEH	REVISED - R. SHAH 10-03-96	STATE OF ILLINOIS DEPARTMENT OF TRANSPORTATION	DISTRICT ONE CURB REMOVAL & REPLACEMENT DETAILS	F.A.U. RTE. 1703	SECTION 08-00025-00-RS	COUNTY COOK	TOTAL SHEETS 010	SHEET NO. 010		
07585-DTLS-01 - P02	PLOT SCALE = 50.000' / IN.	CHECKED -	REVISED - M. GOMEZ 01-22-01			SCALE: NONE	SHEET NO. 010 OF 010 SHEETS	STA.	TO STA.	CONTRACT NO. 63110		
	PLOT DATE = 1/4/2008	DATE - 03-11-94	REVISED - R. BORO 01-01-07			FED. ROAD DIST. NO. 1			ILLINOIS	FED. AID PROJECT M-9003 (132)		