

STATE OF ILLINOIS
DEPARTMENT OF TRANSPORTATION
DIVISION OF HIGHWAYS

PROPOSED
HIGHWAY PLANS

F.A.U. RTE.	SECTION	COUNTY	TOTAL SHEETS	SHEET NO.
0125	96-00091-00-FP	MCHENRY	73+2	1

63123 Total Sheets 75 Including 19A+49A

FOR INDEX OF SHEETS SEE SHEET NO. 2

DESIGN DESIGNATION
2150(16) ARTERIAL 5.50 (PCC-20)

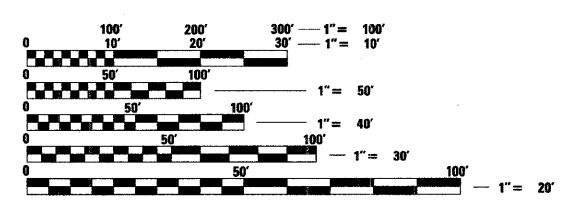
ERICK STREET

STRUCTURAL DESIGN TRAFFIC:	Year 2030
PV = 2284	SU = 203 MU = 51
ROAD/STREET CLASSIFICATION:	Class Collector
TRAFFIC FACTOR:	Actual TF = .34
SUBGRADE SUPPORT RATING:	
SSR = POOR	DESIGN SPEED = 35 MPH

ILLINOIS ROUTE 176

STRUCTURAL DESIGN TRAFFIC:	Year 2030
PV = 21,669	SU = 1830 MU = 458
ROAD/STREET CLASSIFICATION:	Class ARTERIAL
TRAFFIC FACTOR:	Actual TF = 3.9
SUBGRADE SUPPORT RATING:	
SSR = POOR	DESIGN SPEED = 45 MPH

PROJECT LOCATED IN
CITY OF CRYSTAL LAKE

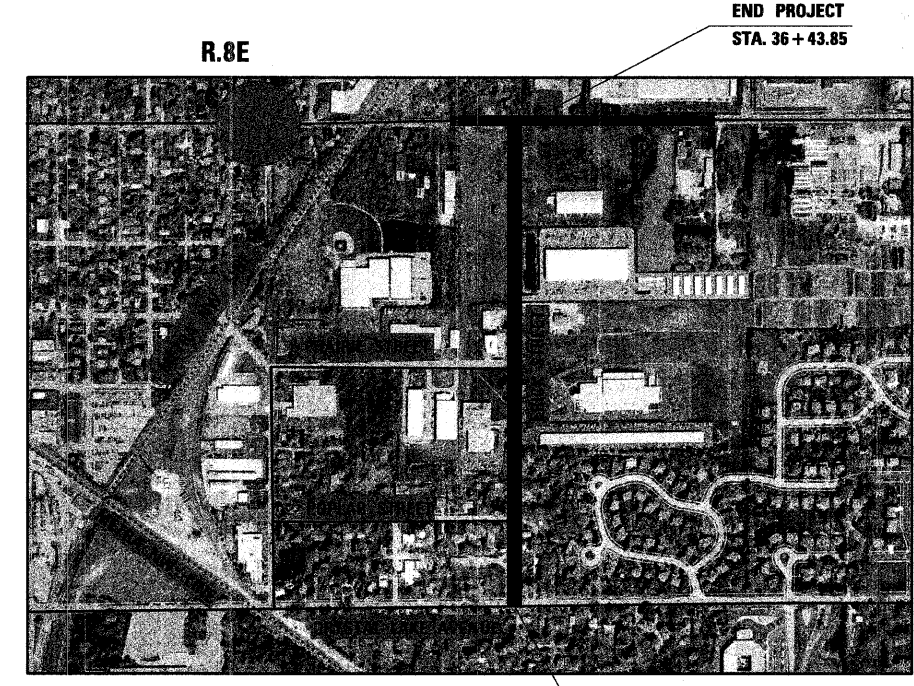


FULL SIZE PLANS HAVE BEEN PREPARED USING STANDARD ENGINEERING SCALES. REDUCED SIZED PLANS WILL NOT CONFORM TO STANDARD SCALES. IN MAKING MEASUREMENTS ON REDUCED PLANS, THE ABOVE SCALES MAY BE USED.

J.U.L.I.E.
JOINT UTILITY LOCATION INFORMATION FOR EXCAVATION
1-800-892-0123



FAU ROUTE 0125 (ERICK STREET)
CRYSTAL LAKE AVENUE TO ILLINOIS ROUTE 176
ROADWAY WIDENING AND RECONSTRUCTION
SECTION 96-00091-00-FP
PROJECT M-CMM-7003 (397)
MCHENRY COUNTY
C-91-420-96



LOCATION MAP
SCALE : 1" = 2000'

GROSS & NET LENGTH FOR ERICK STREET = 2629.1 LF. = 0.498 MI.



IDOT ASSOCIATE FIELD ENGINEER: KEVIN STALLWORTH, P.E. (847) 705-4169

PATRICK ENGINEERING INC.
JARROD J. CEBULSKI, P.E.



EXP. 11-30-09
DATE 12-11-08

STATE OF ILLINOIS
DEPARTMENT OF TRANSPORTATION
DIVISION OF HIGHWAYS

APPROVED December 12, 2008
[Signature]
CITY OF CRYSTAL LAKE

PASSED DECEMBER 16 2008
[Signature]
DISTRICT ENGINEER OF LOCAL ROADS & STREETS

RELEASING FOR BID BASED ON LIMITED REVIEW
December 16 2008
[Signature]
DISTRICT ENGINEER

PRINTED BY THE AUTHORITY
OF THE STATE OF ILLINOIS