

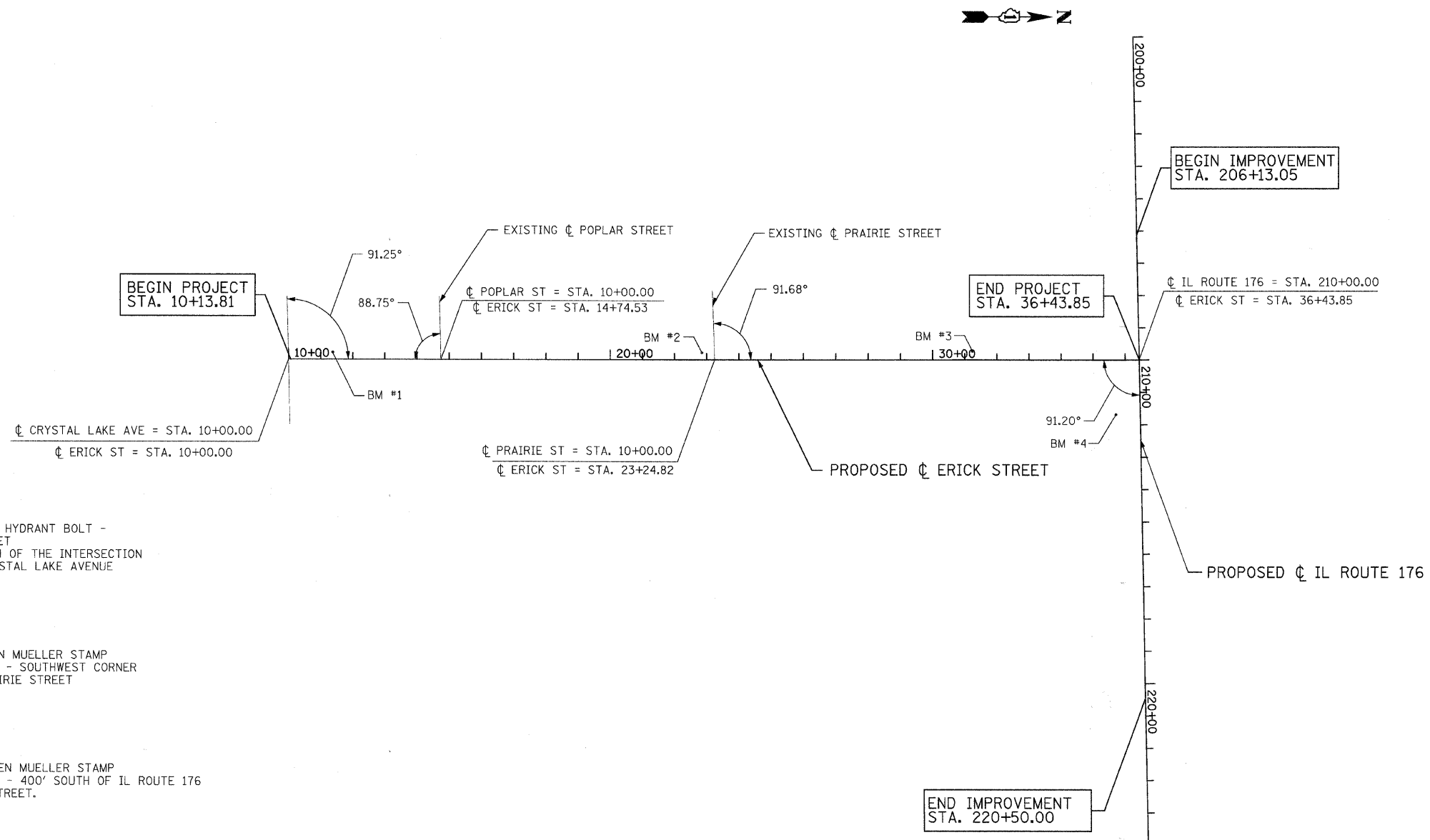
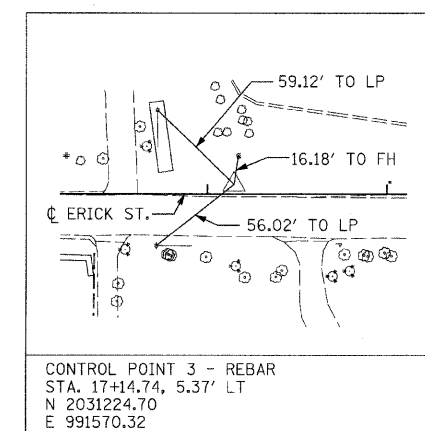
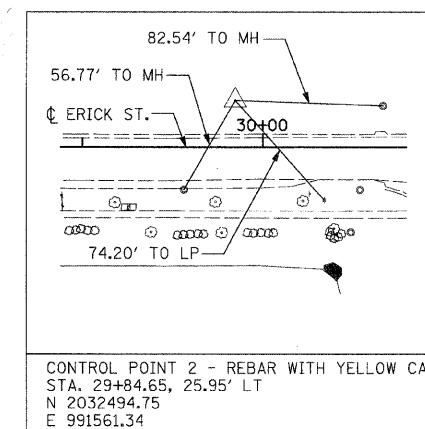
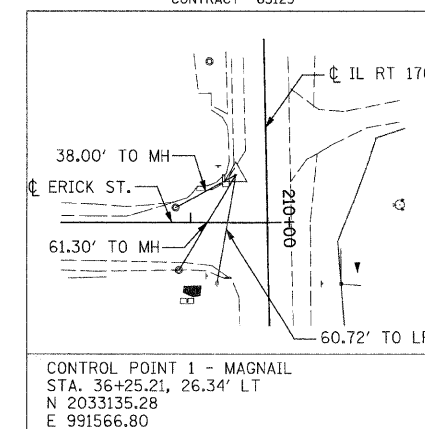
F.A.U. RTE.	SECTION	COUNTY	TOTAL SHEETS	SHEET NO.
0125	96-00091-00-FP	MCHENRY	73	15
STA. 10+13.81		TO STA. 36+43.85		
FED. ROAD DIST. NO.		ILLINOIS FED. AID PROJECT		
CONTRACT #63123				

ALIGNMENT POINT	N	E
POT 10+00.00	2030509.94	991569.15
POT 36+43.85	2033153.68	991593.31

ALIGNMENT POINT	N	E
POT 200+00.00	2033141.93	990593.38
POT 224+94.67	2033171.25	993087.88

LOCATION	N	E
☉ ERICK STREET = 14+74.53 ☉ POPLAR STREET = 10+00.00	2030984.45	991573.49
☉ ERICK STREET = 23+24.82 ☉ PRAIRIE STREET = 10+00.00	2031834.71	991581.26
☉ ERICK STREET = 10+00.00 ☉ CRYSTAL LAKE AVE. = 10+00.00	2030509.94	991569.15



**BENCHMARKS**

BM 1: CHISELED X ON FIRE HYDRANT BOLT - WEST SIDE OF ERICK STREET APPROXIMATELY 140' NORTH OF THE INTERSECTION OF ERICK STREET AND CRYSTAL LAKE AVENUE

ELEVATION - 928.36  
STA. 11+37.70, 22.10 LT  
N 2030647.84  
E 991548.31

BM2: FLANGE BOLT BETWEEN MUELLER STAMP ON EAST SIDE OF HYDRANT - SOUTHWEST CORNER OF ERICK STREET AND PRAIRIE STREET

ELEVATION - 901.49  
STA. 22+84.96, 22.28 LT  
N 2031795.05  
E 991558.61

BM 3: FLANGE BOLT BETWEEN MUELLER STAMP ON WEST SIDE OF HYDRANT - 400' SOUTH OF IL ROUTE 176 ON WEST SIDE OF ERICK STREET.

ELEVATION - 887.02  
STA. 31+23.85, 27.72 LT  
N 2032633.96  
E 991560.84

BM 4: NE FLANGE BOLT WITH CUT "X" IN PARKING LOT - SOUTHEAST CORNER OF ERICK STREET AND ILLIONIS ROUTE 176; 100' EAST OF ERICK STREET.

ELEVATION - 890.11  
STA. 35+71.84, 168.19 RT  
N 2033080.14  
E 991760.83

REVISIONS	
NAME	DATE

CITY OF CRYSTAL LAKE  
ERICK STREET (FAU 0125)

ALIGNMENT, TIES, & BENCHMARKS  
STA. 10+13.81 TO STA. 36+43.85

SCALE: 1" = 200'  
DATE: DECEMBER 15, 2008

DRAWN BY: MJV  
CHECKED BY: DES

