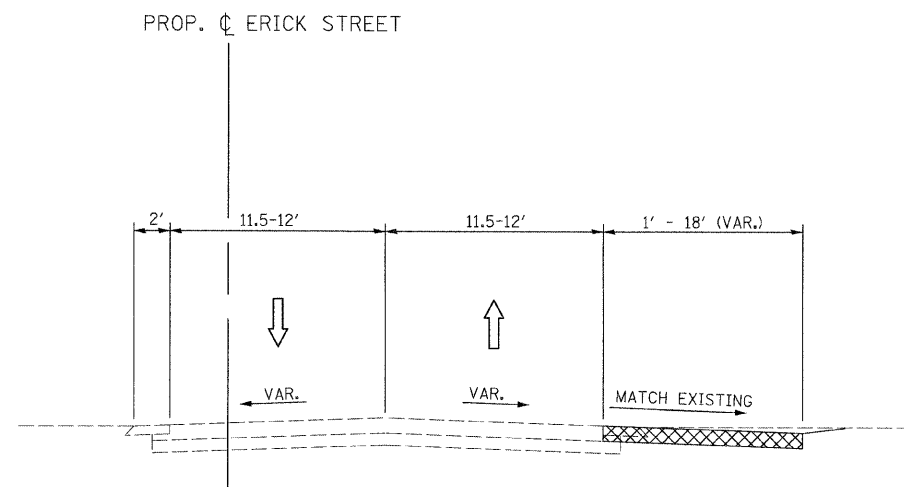
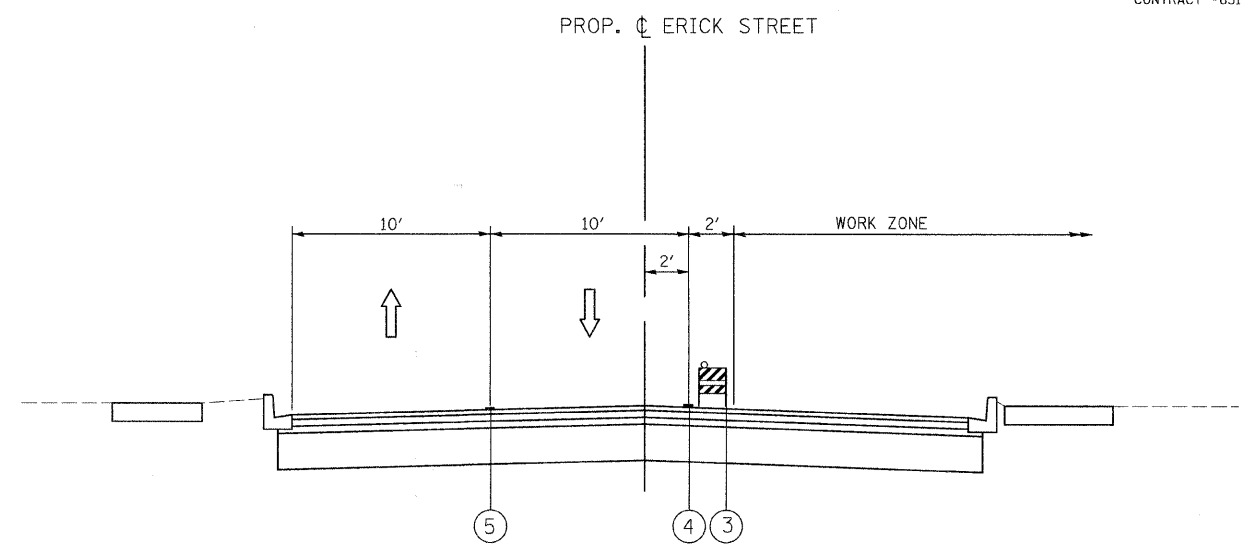


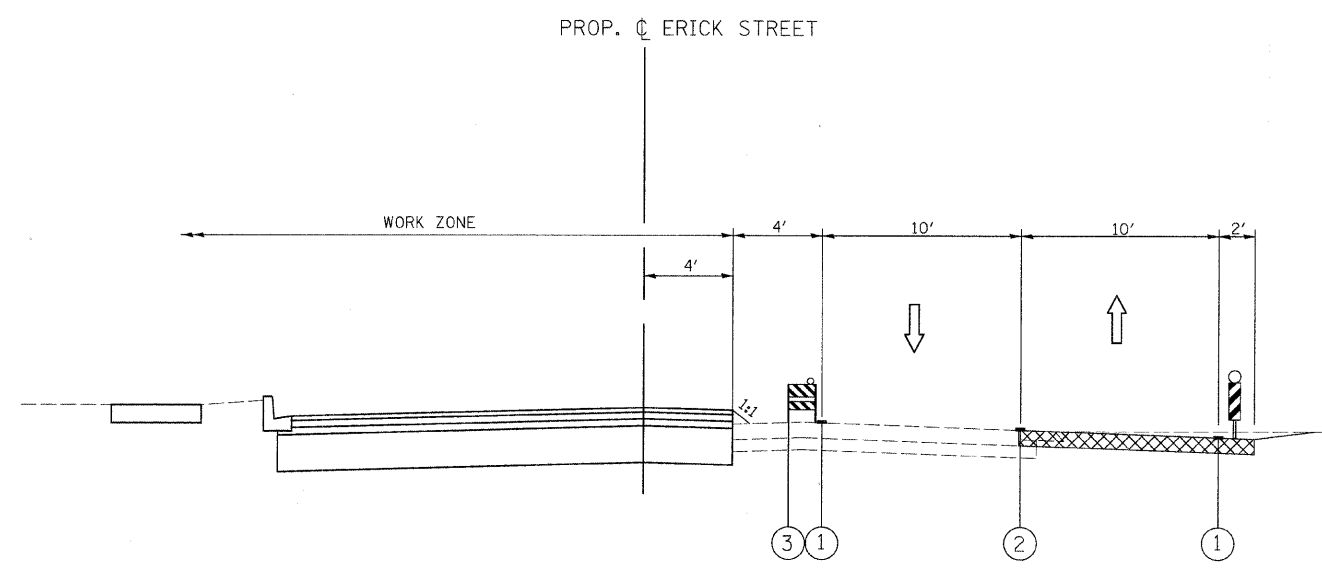
F.A. RTE.	SECTION	COUNTY	TOTAL SHEETS	SHEET NO.
0125	96-00091-00-FP	MCHENRY	73	19A
STA. 10+13.81		TO STA. 36+43.85		
FED. ROAD DIST. NO.	ILLINOIS	FED. AID PROJECT		
CONTRACT #63123				



PRE-STAGE CONSTRUCTION
STA. 10+13.81 TO STA. 36+43.85



STAGE 2 CONSTRUCTION
STA. 10+13.81 TO STA. 36+43.85



STAGE 1 CONSTRUCTION
STA. 10+13.81 TO STA. 36+43.85

LEGEND:

- ① TEMPORARY PAVEMENT MARKING LINE, 4 INCHES (WHITE)
- ② TEMPORARY PAVEMENT MARKING LINE, 4 INCHES (DOUBLE YELLOW)
- ③ TYPE II BARRICADE OR DRUM WITH STEADY BURNING LIGHT (50' C-C, 25' @ TAPERS, 12' C-C ALONG RADII)
- ④ PAVEMENT MARKING TAPE, TYPE 3, 4 INCHES (WHITE)
- ⑤ PAVEMENT MARKING TAPE, TYPE 3, 4 INCHES (DOUBLE YELLOW)
- TEMPORARY PAVEMENT, 8"
- VERTICAL PANELS @ 50' C-C

REVISIONS	
NAME	DATE

CITY OF CRYSTAL LAKE
ERICK STREET (FAU 0125)
SUGGESTED STAGES OF CONSTRUCTION
& TRAFFIC CONTROL
TYPICAL SECTIONS

SCALE: NONE
DATE: DECEMBER 15, 2008

DRAWN BY: MJV
CHECKED BY: DES

