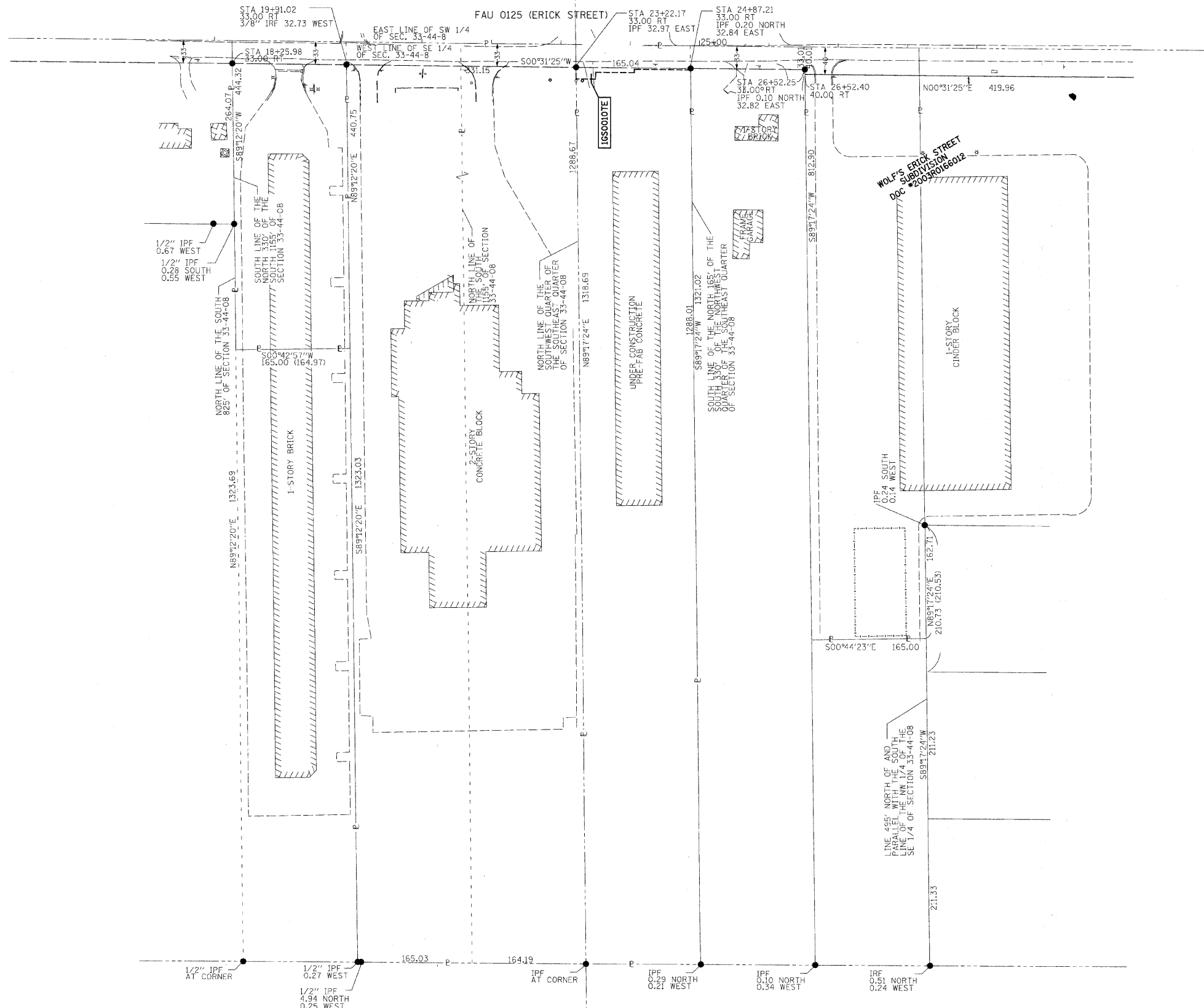


ROUTE NO.	SECTION	COUNTY	TOTAL SHEETS	SHEET NO.
X	97-00091-00-FP	McHENRY	73	44
STA. 19+91.02		TO STA. 24+87.21		
SECTION 33, T44N, R8E OF THE 3RD P.M.				

CONTRACT #63123



LEGEND

☐ CATCH BASIN	● SURVEY MONUMENT (FOUND)
☐ SPLICE BOX	○ MANHOLE
☐ JUNCTION BOX	⊕ POWER POLE
☐ MONITORING WELL	⊕ MAILBOX
BUSH/HEDGE	⊕ SIGN
	⊕ FIRE HYDRANT
	○ WATER VALVE
	⊕ HAND POLE
	○ TREE (CONIFEROUS)
	○ TREE (DECIDUOUS)
---	--- SECTION LINE
---	--- TEMPORARY CONSTRUCTION EASEMENT
---	--- RIGHT-OF-WAY LINE

STATE OF ILLINOIS )  
COUNTY OF LAKE )SS

WE, PATRICK ENGINEERING INC., AN ILLINOIS PROFESSIONAL DESIGN FIRM, NUMBER 184-000409, DO HEREBY DECLARE THAT THIS MAP OR PLAT AND THE SURVEY ON WHICH IT IS BASED IS A TRUE AND CORRECT REPRESENTATION OF SAID SURVEY.

THIS PROFESSIONAL SERVICE CONFORMS TO THE CURRENT ILLINOIS MINIMUM STANDARDS FOR A BOUNDARY SURVEY.

THE LEGAL DESCRIPTION IS ATTACHED HERETO AND MADE A PART HEREOF AS EXHIBIT A.

ALL DIMENSIONS ARE IN FEET AND DECIMAL PARTS THEREOF. NO DISTANCE OR ANGLES SHOWN HEREON MAY BE ASSUMED BY SCALING.

GIVEN UNDER MY HAND AND SEAL THIS 4TH DAY OF APRIL, 2008 IN LISLE, ILLINOIS.

SCOTT A. LUTZ, I.P.L.S. NO. 3511  
LICENSE EXPIRES NOVEMBER, 30, 2008



BASIS OF BEARINGS IS ILLINOIS STATE PLANE (EAST ZONE NAD 83, 1986 ADJUSTMENT)  
ALL DIMENSIONS SHOWN HEREON ARE IN (NAD 83) GRID



**PATRICK ENGINEERING INC.**  
4970 VARSITY DRIVE  
LISLE, ILLINOIS  
DESIGN FIRM NO. 184-000409

REVISION	DATE	DESCRIPTION

CITY OF CRYSTAL LAKE  
PLAT OF HIGHWAYS  
ROUTE ERICK STREET (FAU 0125)  
SECTION 96-00091-00-FP  
McHENRY COUNTY  
JOB# 20708.028 PROJ# R-91-014-08  
SEC 33, T 44N, R 8E OF 3RD P.M.  
STA 19+91.02 TO STA 24+87.21  
DRAWN RJP/CD CHECKED CD/SL  
SCALE: 1" = 80' SHEET NO. 44 OF 73