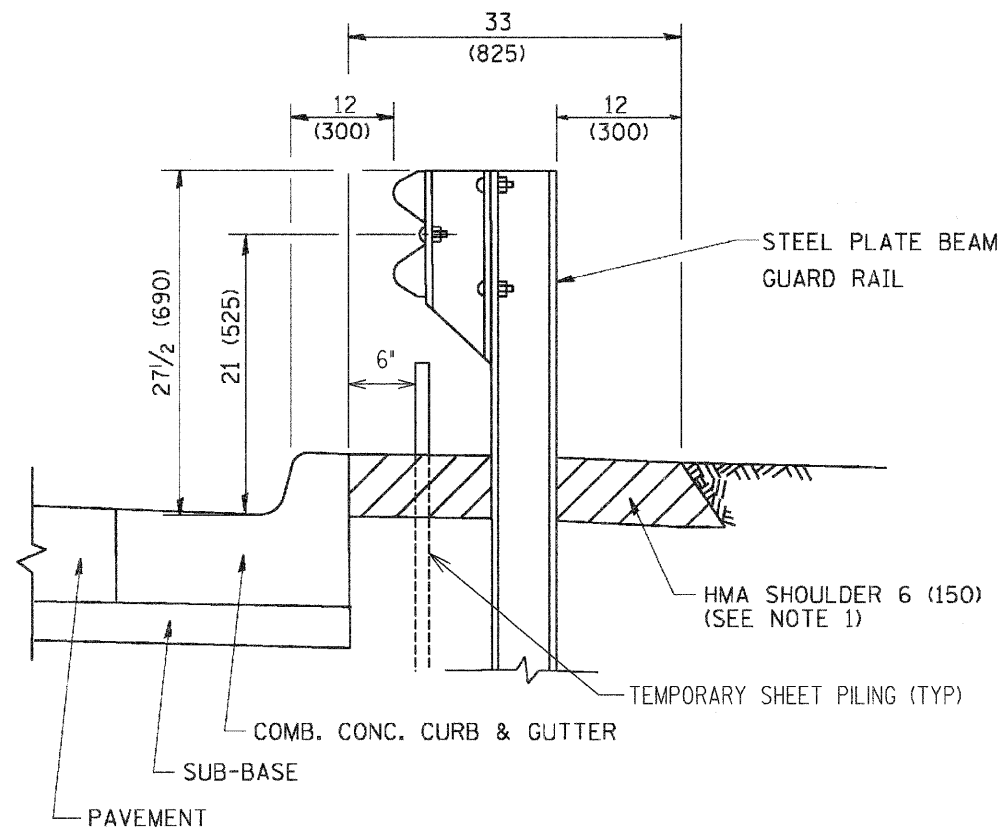


F.A.U. RTE.	SECTION	COUNTY	TOTAL SHEETS	SHEET NO.
1369	08-00082-00-BR	DUPAGE	13	11

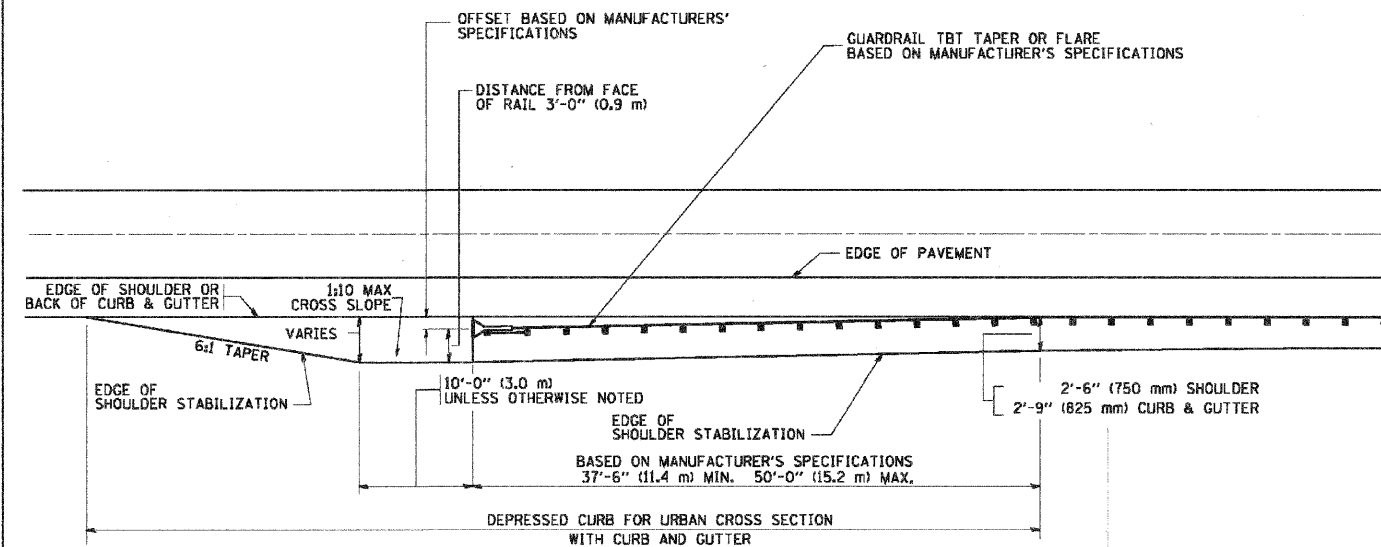


- NOTES: 1. THE HMA SHOULDER SHALL EXTEND UNDER THE TRAFFIC BARRIER TERMINAL
2. GUARD RAIL MAY BE PLACED AT THE BACK OF CURB WHEN DIRECTED BY THE ENGINEER.

BASIS OF PAYMENT: HMA SHOULDER 6 (150) WILL BE PAID FOR AT THE CONTRACT UNIT PRICE PER SQUARE YARD (SQUARE METER) FOR "HOT-MIX ASPHALT SHOULDER 6" (150 mm)".

STEEL PLATE BEAM GUARD RAIL AND TRAFFIC BARRIER TERMINAL, OF THE TYPE SPECIFIED WILL BE PAID FOR SEPARATELY.

DETAILS FOR STEEL PLATE BEAM GUARD RAIL ADJACENT TO CURB AND GUTTER
 [FOR ROADWAY SPEED 35 MPH (60 kmh) TO 45 MPH (70 kmh)]



STABILIZATION AT TBT TY. 1 SPL.

TBT = TRAFFIC BARRIER TERMINAL
 ALL DIMENSIONS ARE IN INCHES (MILLIMETERS) UNLESS OTHERWISE SHOWN.

REVISIONS		ILLINOIS DEPARTMENT OF TRANSPORTATION	
NAME	DATE		
M. DE YONG	09-22-90		
M. DE YONG	07-14-92		
R. SHAH	09/09/94		
R. SHAH	10/25/94		
R. SHAH	02/23/95		
A. ABBAS	03/21/97		
E. GOMEZ	08/28/00		
R. BORO	01/01/07		

SCALE: VERT. NONE
 HORIZ. NONE

DRAWN BY Jls
 CHECKED BY

BD600-10 (BD 34)

REVISIONS:		DESCRIPTION		DESCRIPTION	
DATE	BY	DATE	BY	DATE	BY

PLOTTED BY:	AMR	ON
DESIGNED BY:	VP	ON
DRAWN BY:	AMR	ON
CHECKED BY:	VP	ON
APPROVED BY:	DVM	ON

PAVIA-MARTING & CO.
 910 WEST LAKE STREET
 ROSELLE, IL 60172-3352
 (630) 529-8800 FAX (630) 894-4910
 Design Firm Professional Registration #184802376

TITLE: **SCHICK ROAD BRIDGE REHABILITATION**
STEEL PLATE BEAM GUARD RAIL DETAIL

SCALE: NONE
 DATE: 10/2/08
 JOB NO: 2826
 SHEET 11 OF 18