

F.A.U. RTE.	SECTION	COUNTY	TOTAL SHEETS	SHEET NO.
1369	08-00082-00-BR	DUPAGE	13	1

STRUCTURE NO. 22-3021

STATE OF ILLINOIS
DEPARTMENT OF TRANSPORTATION
DIVISION OF HIGHWAYS

PLANS FOR PROPOSED FEDERAL AID HIGHWAY

F.A.U. ROUTE 1369 (SCHICK ROAD)

SECTION 08-00082-00-BR

BRIDGE REHABILITATION

PROJECT M-9003(226)

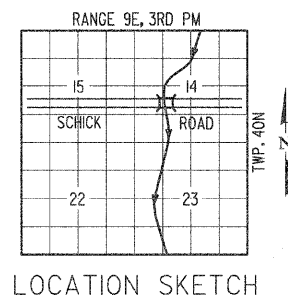
C-91-314-07

VILLAGE OF BARTLETT, DUPAGE COUNTY

IDOT FEDERAL AID DESIGN ENGINEER: KEVIN STALLWORTH (847) 705-4169

INDEX OF SHEETS

- 1 COVER SHEET
- 2 GENERAL NOTES AND SUGGESTED SEQUENCE OF WORK
- 3 SUMMARY OF QUANTITIES
- 4 EXISTING TYPICAL SECTIONS
- 5 PROPOSED TYPICAL SECTIONS
- 6 PLAN AND PROFILE
- 7 TRAFFIC CONTROL AND DETOUR PLAN
- 8 PILE BENT ENCASUREMENT DETAIL AND LOCATIONS
- 9 ABUTMENT CURTAIN WALL DETAIL
- 10 BRIDGE APPROACH PAVEMENT DETAIL
- 11 STEEL PLATE BEAM GUARD RAIL DETAIL
- 12 CROSS SECTIONS STA. 10+9 TO 11+20
- 13 CROSS SECTIONS STA. 11+20 TO 12+25



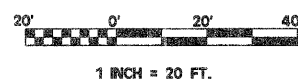
HIGHWAY STANDARDS

- 606001-04 CONCRETE CURB TYPE B AND COMBINATION CONCRETE CURB AND GUTTER
- 701901-01 TRAFFIC CONTROL DEVICES
- 780001-02 TYPICAL PAVEMENT MARKINGS
- 781001-03 TYPICAL APPLICATIONS RAISED REFLECTIVE PAVEMENT MARKERS (SNOW PLOW RESISTANT)
- 630001-08 STEEL PLATE BEAM GUARDRAIL
- 630201-06 PCC/HMA STABILIZATION AT STEEL PLATE BEAM GUARDRAIL
- 631006-06 TRAFFIC BARRIER TERMINAL, TYPE 1B
- 630301-05 SHOULDER WIDENING FOR TYPE I (SPECIAL) GUARDRAIL TERMINALS
- 701502-03 URBAN LANE CLOSURE, 2L, 2W, WITH BIDIRECTIONAL LEFT TURN LANE
- 420401-07 Bridge Approach Pavement Connector

TRAFFIC DATA

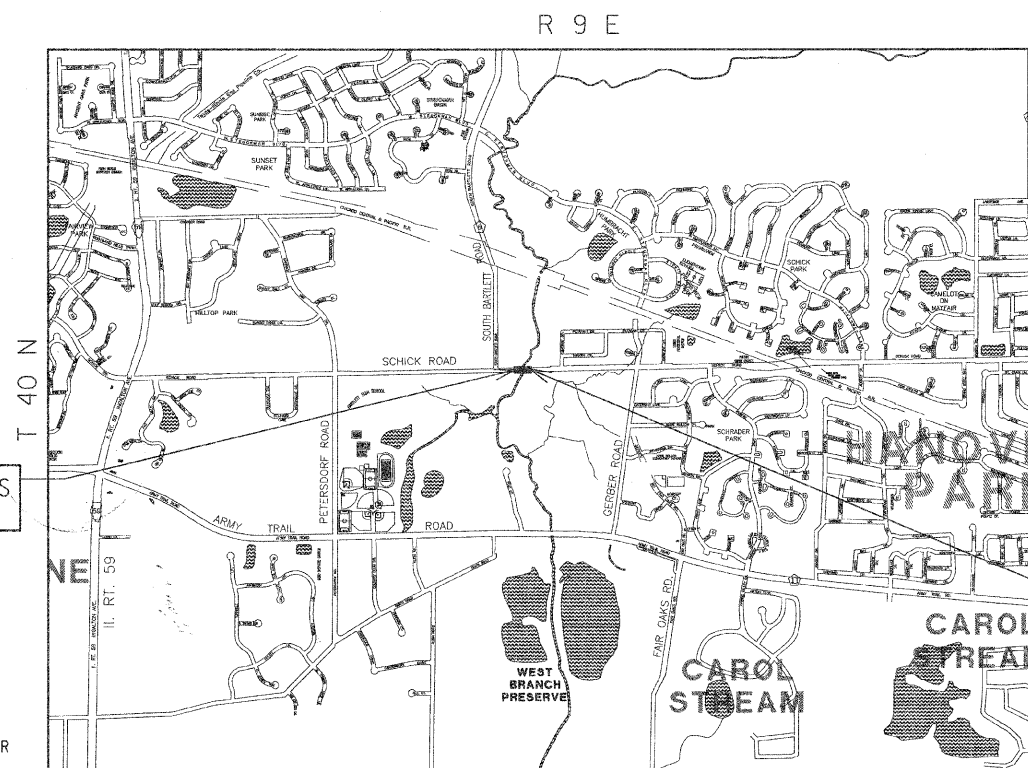
- POSTED SPEED LIMIT = 35 MPH
- ADT = 16,350 (CURRENT)
- ADT = 21,250 (2030)
- TRUCK TRAFFIC = 2%
- FUNCTIONAL CLASSIFICATION: MINOR ARTERIAL ROAD

FOR JOINT UTILITY INFORMATION



BENCHMARK

DUPAGE COUNTY FLAG IN NORTH EAST
WINGWALL OF SCHICK ROAD BRIDGE OVER
WEST BRANCH DUPAGE RIVER
ELEVATION = 745.35



GROSS AND NET LENGTH (SCHICK ROAD) = 210 L.F. = 0.04 MI.



PROJECT ENDS STA. 12+20

PROJECT BEGINS STA. 10+90

DALE V. MARTING
REGISTERED PROFESSIONAL ENGINEER
No. 062-25264
EXPIRES 11/30/09

C-91-314-07



STATE OF ILLINOIS
DEPARTMENT OF TRANSPORTATION
DIVISION OF HIGHWAYS

APPROVED *Paul J. Furst* 12-19-08
DIRECTOR OF PUBLIC WORKS

PASSED *Chris Healy* DECEMBER 19 2008
DISTRICT ENGINEER OF LOCAL ROADS & STREETS

RELEASING FOR BID BASED ON LIMITED REVIEW
JANUARY 6, 2009
Diana M. O'Keefe
DEPUTY DIRECTOR OF HIGHWAYS, REGION I ENGINEER

PAVIA-MARTING & CO.
910 WEST LAKE STREET
ROSELLE, IL 60172-3352
(630) 529-8800 FAX (630) 894-4910
Design Firm Professional Registration #184002376

PMC PROJECT NO. 2826
PRINTED BY THE AUTHORITY OF THE STATE OF ILLINOIS

F.A.U. RTE.	SECTION	COUNTY	TOTAL SHEETS	SHEET NO.
1369	06-00082-00-BR	DUPAGE	13	2

GENERAL NOTES

- CALCULATED WEIGHT OF STRUCTURAL STEEL = 4,770 POUNDS
- ALL STRUCTURAL STEEL SHALL BE AASHTO M 270 GRADE 36 (EXCEPT EXPANSION JOINTS, WHICH SHALL BE AASHTO M 270 GRADE 36.)
- REINFORCEMENT BARS SHALL CONFORM TO THE REQUIREMENTS OF ASTM A 706 GR. 60. SEE SPECIAL PROVISIONS, BRIDGE APPROACH PAVEMENT, EPOXY COATING ON REINFORCEMENT AND STRUCTURAL REPAIR OF CONCRETE.
- REINFORCEMENT BARS DESIGNATED (E) SHALL BE EPOXY COATED.
- PLAN DIMENSIONS AND DETAILS RELATIVE TO EXISTING PLANS ARE SUBJECT TO NOMINAL CONSTRUCTION VARIATIONS. THE CONTRACTOR SHALL FIELD VERIFY EXISTING DIMENSIONS AND DETAILS AFFECTING NEW CONSTRUCTION AND MAKE NECESSARY APPROVED ADJUSTMENTS PRIOR TO CONSTRUCTION OR ORDERING OF MATERIALS. SUCH VARIATIONS SHALL NOT BE CAUSE FOR ADDITIONAL COMPENSATION FOR A CHANGE IN SCOPE OF THE WORK; HOWEVER, THE CONTRACTOR WILL BE PAID FOR THE QUANTITY ACTUALLY FURNISHED AT THE UNIT PRICE BID FOR THE WORK.
- THE CONTRACTOR SHALL OBTAIN A CONSTRUCTION PERMIT FROM THE ILLINOIS DEPARTMENT OF NATURAL RESOURCES (IDNR), OFFICE OF WATER RESOURCES FOR ANY TEMPORARY CONSTRUCTION ACTIVITY PLACED IN THE WATER EXCEPT COFFERDAMS. THIS SHALL INCLUDE THE PLACEMENT OF MATERIAL FOR RUN-AROUNDS, CAUSEWAYS, ETC. ANY PERMIT APPLICATION BY THE CONTRACTOR SHALL REFER TO THE IDNR PERMIT NUMBER AS SHOWN IN THE CONTRACT PLANS.
- THE STRUCTURAL STEEL PLATES OF THE BEARING ASSEMBLY SHALL CONFORM TO THE REQUIREMENTS OF AASHTO M 270 GRADE - (AASHTO M 270 GRADE - W.)
- BACKFILL SHALL BE PLACED BEHIND THE ABUTMENT AFTER THE REPAIR OF THE ABUTMENT PILES HAS BEEN COMPLETED, THE CONCRETE WALL HAS BEEN POURED, AND ALL NECESSARY FALSEWORK HAS BEEN REMOVED. SEE ARTICLE 502.10 OF THE STANDARD SPECIFICATIONS.
- WHERE SECTION OR SUBSECTION MONUMENTS ARE ENCOUNTERED, THE ENGINEER SHALL BE NOTIFIED BEFORE SUCH MONUMENTS ARE REMOVED. THE CONTRACTOR SHALL PROTECT AND CAREFULLY PRESERVE ALL MONUMENTS UNTIL AN AUTHORIZED SURVEYOR OR AGENT HAS WITNESSED OR OTHERWISE REFERENCED THEIR LOCATION. THE CONTRACTOR SHALL BE RESPONSIBLE FOR HAVING AN AUTHORIZED SURVEYOR REESTABLISH ANY SECTION OR SUBSECTION MONUMENTS DESTROYED BY HIS OPERATIONS.
- ALL TEMPORARY EROSION CONTROL MEASURES SHALL BE LEFT IN PLACE UNTIL REMOVAL IS REQUIRED TO CONSTRUCT FINAL GRADE LINES.
- IT WILL BE THE CONTRACTOR'S RESPONSIBILITY TO REMOVE ANY DEBRIS OR DIRT CAUSED BY CONSTRUCTION ACTIVITY THAT COVERS THE REFURBISHED RIP RAP. NO EXTRA COMPENSATION SHALL BE ALLOWED FOR THIS WORK.
- PROTECTIVE COAT SHALL BE APPLIED TO THE BRIDGE APPROACH PAVEMENT, THE NEW CONCRETE CURB AND GUTTER, AND THE STRUCTURAL REPAIR CONCRETE IN ACCORDANCE WITH ARTICLE 503.19 OF THE STATE STANDARD SPECIFICATIONS. THE SEASONAL EXCEPTION SHALL NOT APPLY. THE PROTECTIVE COAT SHALL BE APPLIED REGARDLESS OF THE CURING METHOD USED. THE RATE OF APPLICATION FOR EACH COAT ON CUT GROOVED AREAS SHALL BE 25 SQUARE YARDS PER GALLON OF MIXTURE.
- REMOVAL OF THE ENTIRE EXISTING BRIDGE APPROACH PAVEMENT AND EXISTING RAISED REFLECTIVE PAVEMENT MARKERS SHALL BE INCLUDED IN THE CONTRACT UNIT PRICE PER SQUARE YARD FOR PAVEMENT REMOVAL (SPECIAL).
- PLAN DIMENSIONS AND DETAILS RELATIVE TO THE EXISTING STRUCTURE HAVE BEEN TAKEN FROM EXISTING PLANS AND ARE SUBJECT TO NOMINAL CONSTRUCTION VARIATIONS. IT SHALL BE THE CONTRACTOR'S RESPONSIBILITY TO VERIFY SUCH DIMENSIONS AND DETAILS IN THE FIELD AND MAKE NECESSARY APPROVED ADJUSTMENTS PRIOR TO CONSTRUCTION OR ORDERING OF MATERIALS. SUCH VARIATIONS SHALL NOT BE A CAUSE FOR ADDITIONAL COMPENSATION OR A CHANGE IN THE SCOPE OF THE WORK. THE CONTRACTOR, HOWEVER, WILL BE PAID FOR THE ACTUAL QUANTITY FURNISHED AT THE UNIT PRICE BID FOR THE WORK. CONSTRUCTION PLANS ARE AVAILABLE FOR REVIEW AT THE DISTRICT HEADQUARTERS IN SCHAUMBURG, ILLINOIS OR AT PAVIA-MARTING & CO., 910 WEST LAKE ST., ROSELLE, IL. PHONE: (630) 529-8000
- IN ADDITION TO THE REQUIREMENTS OF ARTICLE 107.16, THE CONTRACTOR SHALL PROTECT THE SURFACE OF ALL BRIDGE DECK IN A MANNER SATISFACTORY TO THE ENGINEER. NO EQUIPMENT WILL BE ALLOWED ON THE BRIDGE EXCEPT FOR ANY HAND TOOLS.

FACTORS USED FOR ESTIMATING PLAN QUANTITIES ARE AS FOLLOWS AND SHALL NOT BE USED FOR THE BASIS OF FINAL QUANTITIES:

ALL HOT-MIX ASPHALT 2.016 TONS/CU. YD.	ON AGGREGATE SURFACE 0.32 GAL./SQ. YD.
BITUMINOUS MATERIALS: ON PAVEMENT 0.09 GAL./SQ. YD.	AGGREGATE (PRIME COAT) 0.0015 TONS/SQ. YD.
INTERMEDIATE LIFTS (FOG COAT) 0.04 GAL./SQ. YD.	ALL AGGREGATE 2.05 TONS/CU. YD.
	RIP RAP 1.50 TONS/CU. YD.

SUGGESTED SEQUENCE OF WORK


- INSTALL EROSION CONTROL BARRIER
- INSTALL TEMPORARY SHEET PILING
- PAVEMENT REMOVAL
- EARTH EXCAVATION
- EXCAVATION SPECIAL (HAND METHOD)
- CLEAN PILE BENTS (BY SAND BLASTING)
- STEEL FABRICATION AND SHOP DRAWINGS
- INSTALL CASING (BY WELDING)
- GROUTING HYDRAULIC GROUT
- INSTALL BOND BREAKER AROUND NEW CASING
- INSTALL ANCHOR BOLTS FOR FORM WORK
- INSTALL 6" CONCRETE PAD WITH ANCHOR BOLTS FOR FORM WORK (CLASS SI CONCRETE)
- INSTALL FORMS (MARINE PLYWOOD, 1" THICK) (RIVERSIDE)
- INSTALL REBAR AS DETAILED
- INSTALL FORMS (ROADWAY SIDE)
- INSTALL CLASS SI CONCRETE - AS DETAILED
- REMOVE FORMS (ROADWAY SIDE ONLY)
- INSTALL LIGHTWEIGHT CELLULAR FILL AS DETAILED
- CONSTRUCT APPROACH SLABS
- CONSTRUCT FULL DEPTH PAVEMENT
- REMOVE BRIDGE OVERLAY, 3-1/2" (SAWCUT)
- INSTALL POLYMER CONCRETE
- INSTALL SILICONE EXPANSION JOINT
- COMPLETE CONCRETE STRUCTURE REPAIRS
- INSTALL STEEL PLATE BEAM GUARDRAIL AND CONNECTOR AS DIRECTED BY ENGINEER
- CONSTRUCT CURB AND GUTTER
- INSTALL TRAFFIC BARRIER TERMINAL END SECTIONS PER IDOT STANDARD
- REMOVE TEMPORARY SHEET PILING TO ELEVATION SUGGESTED BY ENGINEER
- PERFORM LANDSCAPING

WATERWAY INFORMATION

DRAINAGE AREA = 23.9 SQ MILES EXISTING LOW GRADE ELEV. = 744.01

FLOOD	FREQ. YEAR	Q (CFS)	OPENING (SQ. FT.)	NAT. HWE	HEAD (FEET)	HEADWATER ELEVATION
	10	830	273.83	741.54	0.02	741.56
DESIGN	50	1240	307.06	742.11	0.03	742.14
BASE	100	1410	320.53	742.34	0.03	742.37
OVERTOPPING						
MAX. CALC.	500	1800	346.06	742.76	0.05	742.81


*THERE ARE NO PROPOSED CHANGES TO THE EXISTING STRUCTURE OPENING

REVISIONS: <table border="1"> <thead> <tr> <th>DATE</th> <th>BY</th> <th>DESCRIPTION</th> <th>DATE</th> <th>BY</th> <th>DESCRIPTION</th> </tr> </thead> <tbody> <tr> <td> </td> <td> </td> <td> </td> <td> </td> <td> </td> <td> </td> </tr> </tbody> </table>				DATE	BY	DESCRIPTION	DATE	BY	DESCRIPTION							PLOTTED BY: AMR ON DESIGNED BY: VP ON DRAWN BY: AMR ON CHECKED BY: VP ON APPROVED BY: DVM ON		 PAVIA-MARTING & Co. 910 WEST LAKE STREET ROSELLE, IL 60172-3352 (630) 529-8000 FAX (630) 894-4910 Design Firm Professional Registration #184002376		TITLE: SCHICK ROAD BRIDGE REHABILITATION GENERAL NOTES AND SUGGESTED SEQUENCE OF WORK		SCALE: NONE DATE: 10/2/08 JOB NO: 2826 SHEET 2 OF 18	
DATE	BY	DESCRIPTION	DATE	BY	DESCRIPTION																		

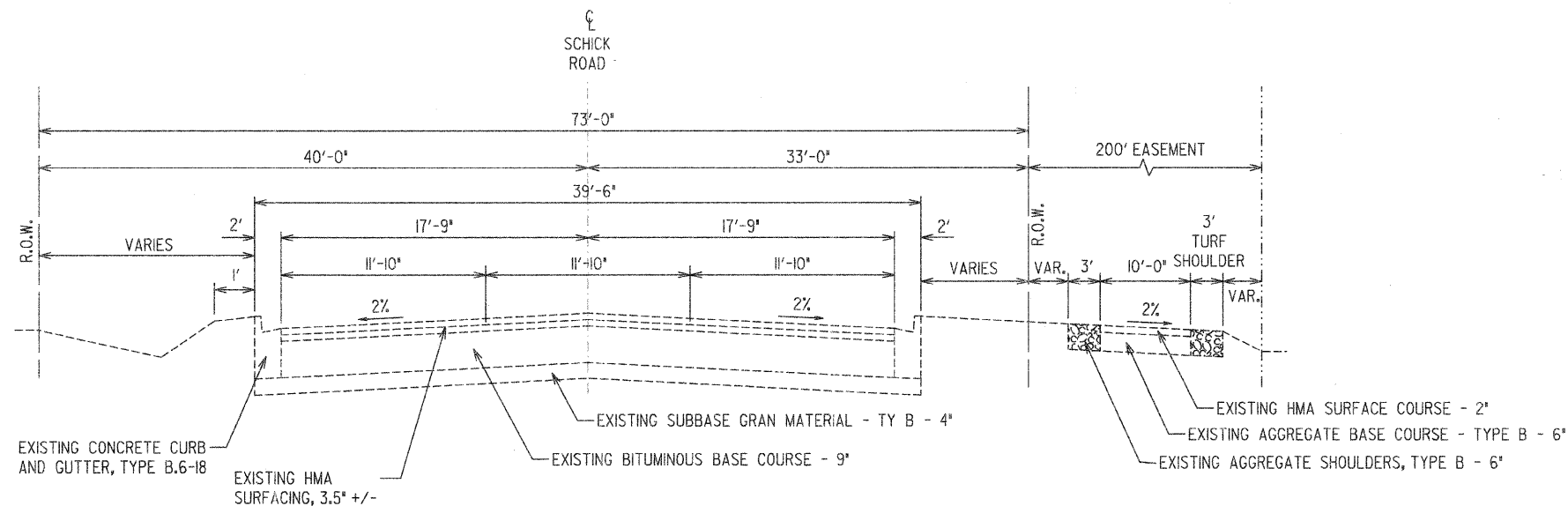
SUMMARY OF QUANTITIES

PAY ITEM CODE	ITEMS	UNIT	TOTAL	1000	X0802A
20200100	EARTH EXCAVATION	CU YD	450	450	
20200410	EXCAVATION (SPECIAL)	CU YD	26		26
2101625	TOPSOIL FURNISH AND PLACE , 6"	SQ YD	220	220	
25000400	NITROGEN FERTILIZER NUTRIENTS	POUND	4.5	4.5	
25000500	PHOSPHORUS FERTILIZER NUTRIENTS	POUND	4.5	4.5	
25000600	POTASSIUM FERTILIZER NUTRIENTS	POUND	4.5	4.5	
25200650	SODDING, SALT TOLERANT (SPECIAL)	SQ YD	220	220	
28000400	PERIMETER EROSION BARRIER	FOOT	420	420	
28000510	INLET FILTERS	EACH	4	4	
28100708	STONE DUMPED RIP RAP, CLASS A4 (SPECIAL)	SQ YD	14	14	
40600100	BITUMINOUS MATERIAL PRIME COAT	GALLON	40	40	
40701981	HOT- MIX ASPHALT PAVEMENT, FULL DEPTH, 15'	SQ YD	150	150	
42001300	PROTECTIVE COAT	SQ YD	332		332
42001400	BRIDGE APPROACH PAVEMENT (SPECIAL)	SQ YD	284		284
44004400	PAVEMENT REMOVAL (SPECIAL)	SQ YD	336	336	
44001600	BRIDGE WEARING SURFACE REMOVAL (SPECIAL, 3-1/2")	SQ YD	14		14
48203021	HOT- MIX ASPHALT SHOULDER, 6"	SQ YD	80	80	
X0325303	STRUCTURAL REPAIR OF CONCRETE (DEPTH GREATER THAN 5 INCHES)	SQ FT	15		15
50800205	REINFORCEMENT BARS (EPOXY COATED)	POUND	2,197		2,197
52100510	ANCHOR BOLTS, 3/4" DIA, 6" LG.	EACH	98		98
60604400	COMBINATION CONCRETE CURB AND GUTTER,TYPE B-6.18	FOOT	140	140	
* 63000155	STEEL PLATE BEAM GUARDRAIL ATTACHED TO STRUCTURE (SPECIAL)	FOOT	40		40
* 63100167	TRAFFIC BARRIER TERMINAL, TYPE I (SPECIAL) TANGENT	EACH	2	2	
* 63100171	TRAFFIC BARRIER TERMINAL T-B SPECIAL	EACH	2	2	
66411900	TEMPORARY FENCE	FOOT	600	600	
67000500	ENGINEERS FIELD OFFICE, TYPE B	MONTH	4	4	
67100100	MOBILIZATION	LSUM	1	1	
70101700	TRAFFIC CONTROL AND PROTECTION	LSUM	1	1	
* 78000200	THERMOPLASTIC PAVEMENT MARKING - LINE, 4"	FOOT	110	110	
* 78008210	POLYUREA PAVEMENT MARKING TYPE I- LINE, 4"	FOOT	140	140	
* 78100100	RAISED REFLECTIVE PAVEMENT MARKER	EACH	8	8	
* 78201000	TERMINAL MARKER DIRECT APPLIED	EACH	4	4	
X0300626	CURB AND GUTTER REMOVAL	FOOT	140	140	
X0320598	TEMPORARY SHEET PILING TO REMAIN IN PLACE	SQ FT	960	960	
X0320887	POLYMER CONCRETE	CU FT	62		62
X0322932	SILICONE JOINT SEALER, 1.5"	FOOT	84		84
X0325318	LIGHTWEIGHT CELLULAR CONCRETE FILL	CU YD	450		450
X0426200	DEWATERING	LSUM	1	1	
XX007787	CLASS SI CONCRETE	CU YD	39.0		39.0
XX003008	TRAFFIC CONTROL DETOUR	LSUM	1	1	
XZ191305	AGGREGATE SUBGRADE	TON	11	11	
XX007186	METAL SHELL PILE BENT ENCASEMENT COMPLETE	EACH	18		18

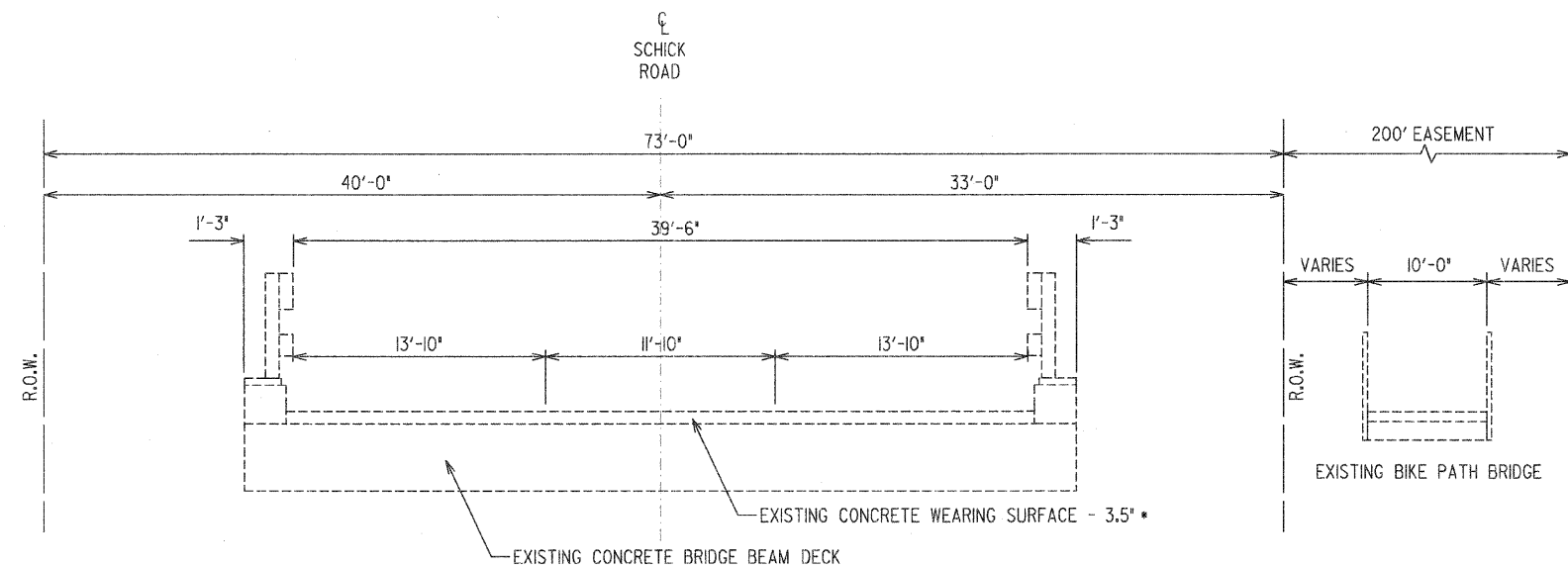
* SPECIALTY ITEMS

REVISIONS DATE BY DESCRIPTION			DATE BY DESCRIPTION			PLOTTED BY: AMR ON DESIGNED BY: VP ON DRAWN BY: AMR ON CHECKED BY: VP ON APPROVED BY: DVM ON	 PAVIA-MARTING & Co. 910 WEST LAKE STREET ROSELLE, IL 60172-3352 (630) 529-8800 FAX (630) 894-4910 Design Firm Professional Registration #184882376	TITLE: SCHICK ROAD BRIDGE REHABILITATION SUMMARY OF QUANTITIES	SCALE: NONE DATE: 10/27/08 JOB NO: 2826 SHEET 3 OF 18
----------------------------------	--	--	---------------------	--	--	--	---	--	--

F.A.U. RTE.	SECTION	COUNTY	TOTAL SHEETS	SHEET NO.
1369	08-00082-00-BR	DUPAGE	13	4



EXISTING TYPICAL SECTION - SCHICK ROAD
 STA. 10+90 TO STA. 11+25, STA. 11+85 TO STA. 12+20
 NOT TO SCALE



EXISTING TYPICAL BRIDGE SECTION
 NOT TO SCALE

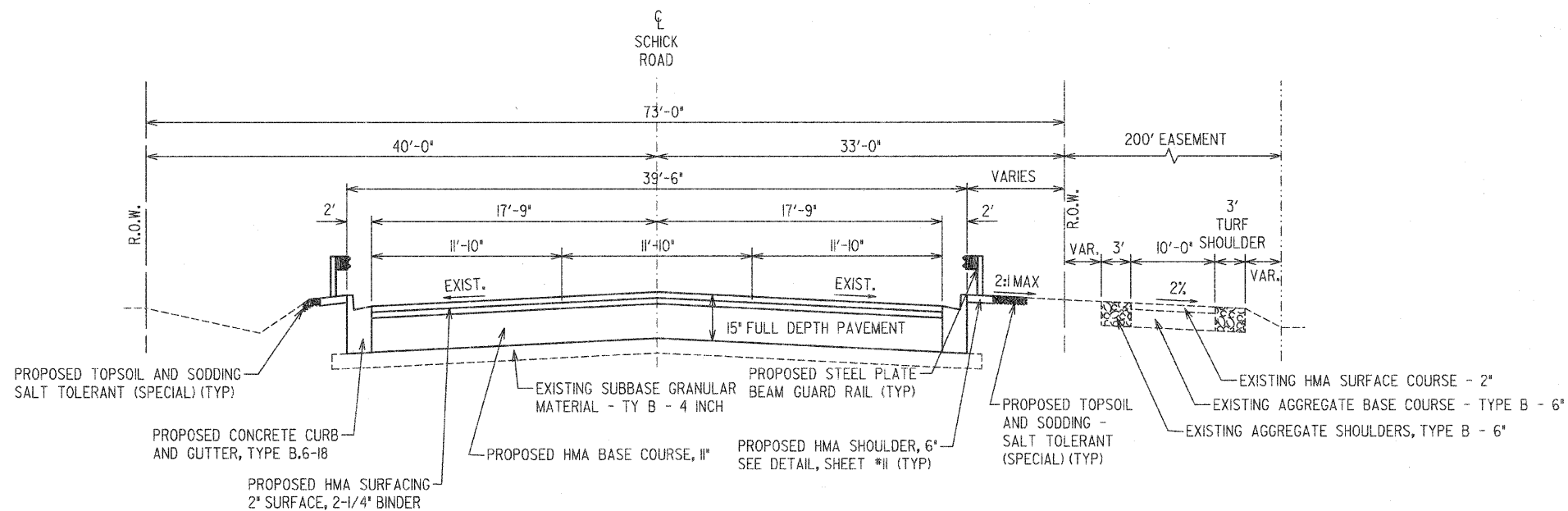
* DEPTH VALUES FROM CORE INFORMATION BY HURLEY AND COMPANY

REVISIONS		DESCRIPTION		DESCRIPTION	
DATE	BY	DATE	BY	DATE	BY

DESIGNED BY:	VP	ON
DRAWN BY:	AMR	ON
CHECKED BY:	VP	ON
APPROVED BY:	DVM	ON

PAVIA-MARTING & Co.
 919 WEST LAKE STREET
 ROSELLE, IL 60172-3352
 (630) 529-8000 FAX (630) 894-4918
 Design Firm Professional Registration #184002376

TITLE:	SCHICK ROAD BRIDGE REHABILITATION EXISTING TYPICAL SECTIONS
SCALE:	NONE
DATE:	10/22/08
JOB NO:	2826
SHEET	4 OF 18



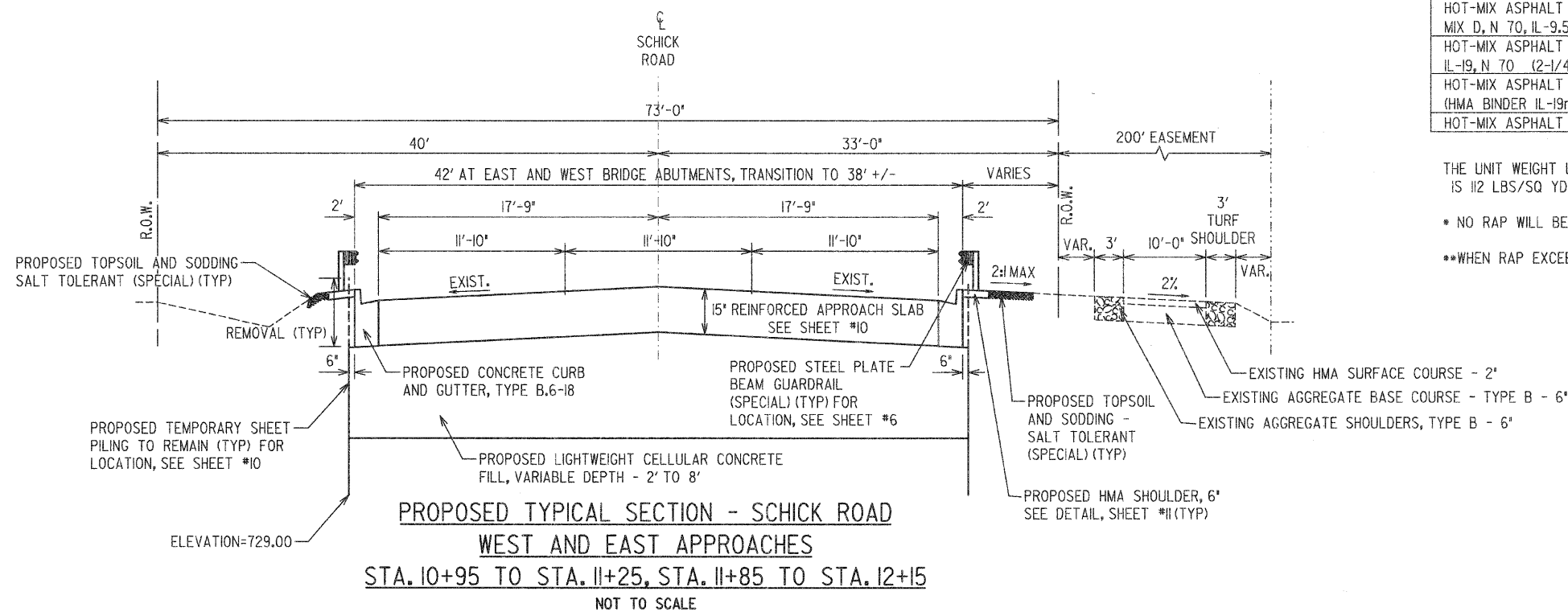
PROPOSED TYPICAL SECTION - SCHICK ROAD
 STA. 10+90 TO STA. 10+95, STA. 12+15 TO STA. 12+20

NOT TO SCALE

ITEM	AC TYPE	VOIDS
HOT-MIX ASPHALT PAVEMENT (FULL DEPTH) 15"		
HOT-MIX ASPHALT SURFACE COURSE, MIX D, N 70, IL-9.5 (2")	PG 64-22*	4% @ 70Gyr
HOT-MIX ASPHALT BINDER COURSE, IL-19, N 70 (2-1/4")	PG 64-22**	4% @ 70Gyr
HOT-MIX ASPHALT BASE COURSE WIDENING, 10-3/4" (HMA BINDER IL-19mm)	PG 64-22**	4% @ 70Gyr
HOT-MIX ASPHALT SHOULDER, 6"	PG 64-22**	2% @ 30Gyr

THE UNIT WEIGHT USED TO CALCULATE ALL HMA SURFACE MIXTURE QUANTITIES IS 112 LBS/SQ YD/IN

- * NO RAP WILL BE ALLOWED IN HMA MIXTURE
- **WHEN RAP EXCEEDS 20%, THE NEW ASPHALT BINDER IN THE MIX SHALL BE PG 58-22



PROPOSED TYPICAL SECTION - SCHICK ROAD
 WEST AND EAST APPROACHES

STA. 10+95 TO STA. 11+25, STA. 11+85 TO STA. 12+15

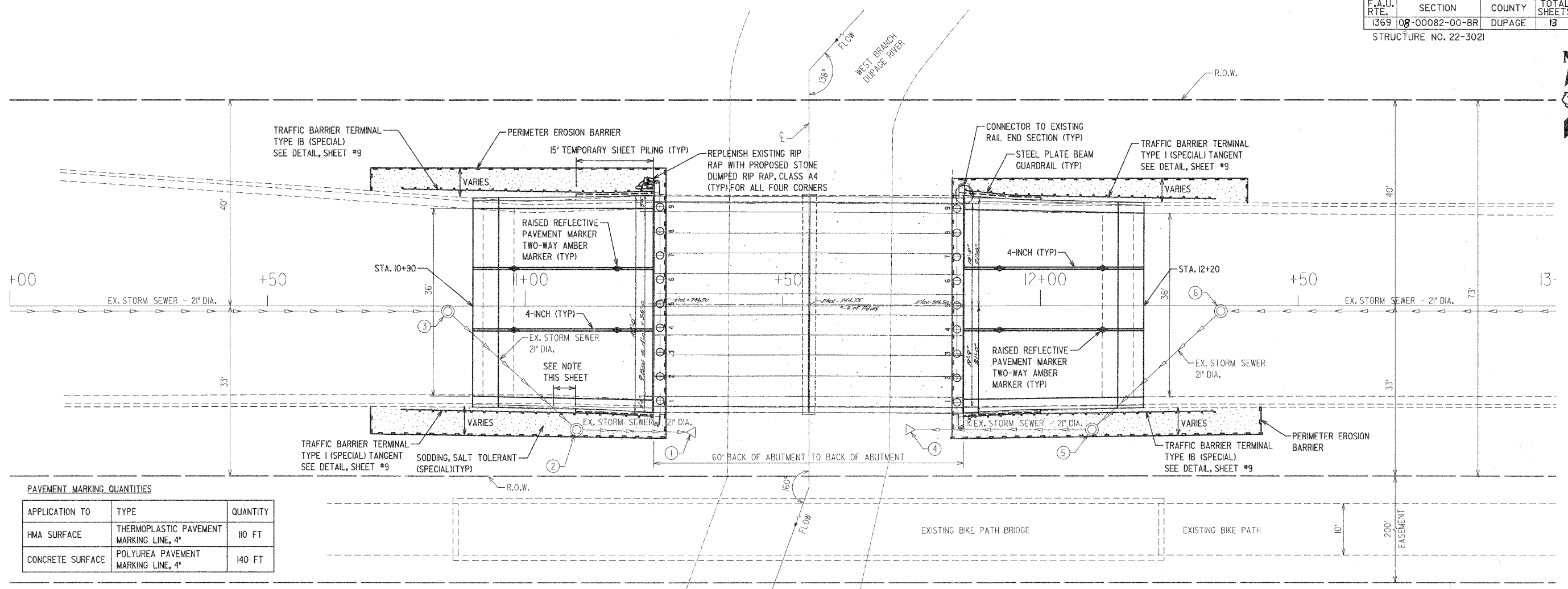
NOT TO SCALE

REVISIONS:		DESCRIPTION	DATE	BY	DESCRIPTION	DATE	BY

PLOTTED BY:	AMR	ON
DESIGNED BY:	VP	ON
DRAWN BY:	AMR	ON
CHECKED BY:	VP	ON
APPROVED BY:	DVM	ON

PAVIA-MARTING & Co.
 910 WEST LAKE STREET
 ROSELLE, IL 60172-3352
 (630) 529-8000 FAX (630) 894-4918
 Design Firm Professional Registration #184062376

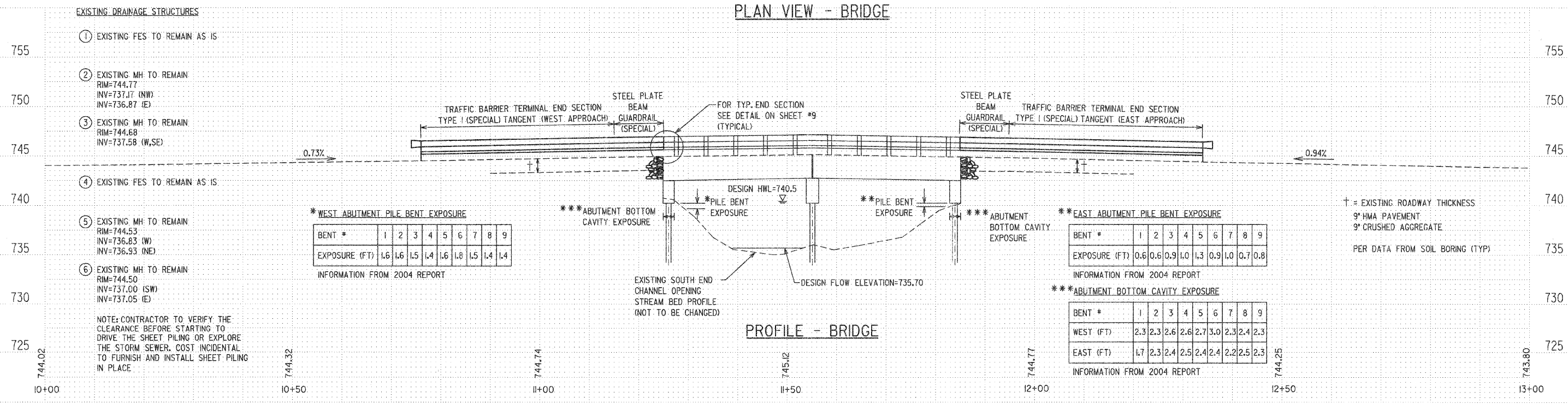
TITLE:	SCHICK ROAD BRIDGE REHABILITATION PROPOSED TYPICAL SECTIONS	SCALE: NONE
DATE:	10/27/08	JOB NO: 2826
SHEET	5	OF 18



PAVEMENT MARKING QUANTITIES

APPLICATION TO	TYPE	QUANTITY
HMA SURFACE	THERMOPLASTIC PAVEMENT MARKING LINE, 4"	110 FT
CONCRETE SURFACE	POLYUREA PAVEMENT MARKING LINE, 4"	140 FT

PLAN VIEW - BRIDGE



PROFILE - BRIDGE

F.A.U. RTE.	SECTION	COUNTY	TOTAL SHEETS	SHEET NO.
1369	08-00082-00-BR	DUPAGE	13	7



LEGEND

- WORK ZONE
- DETOUR ROUTE
- TEMPORARY TRAFFIC ADVISORY SIGN
- SIGN LEGEND

NOTE: BIKE PATH TO REMAIN OPEN DURING CONSTRUCTION

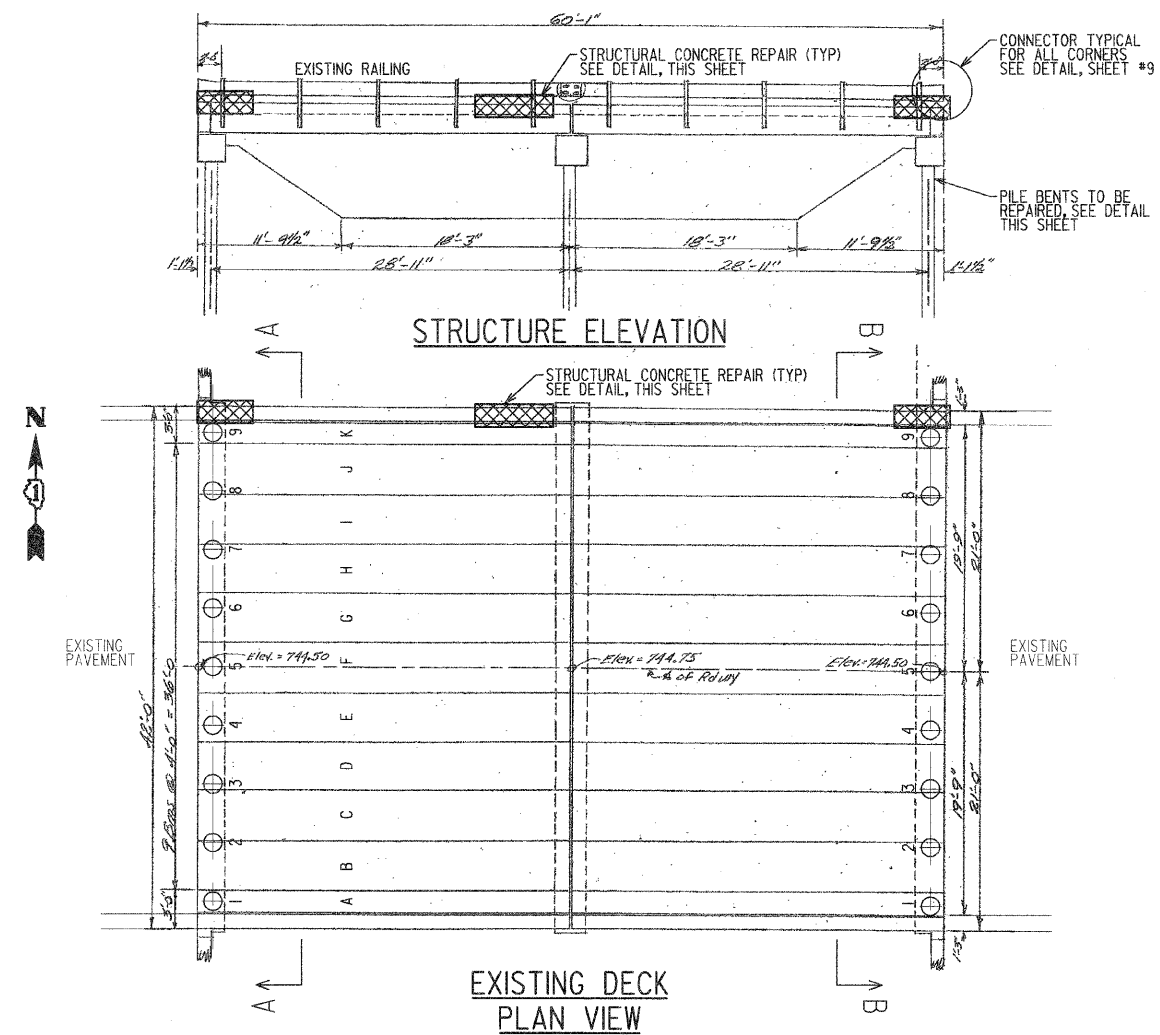
SIGN LEGEND

<p>① ROAD CLOSED 1.5 MILES AHEAD LOCAL TRAFFIC ONLY W20-210 36 X 36</p>	<p>②L ROAD CLOSED 1500 FT AHEAD LOCAL TRAFFIC ONLY W20-310 36 X 36</p> <p> M4-10 48 X 18</p>	<p>③ SCHICK ROAD EAST/WEST</p> <p> M4-10 48 X 18</p>	<p>⑤E SCHICK ROAD EAST</p> <p> M4-9 30 X 24</p>	<p>⑥ SCHICK ROAD EAST/WEST</p> <p> M4-1010 48 X 18</p>	<p>⑧ TYPE III BARRICADES OR TRAFFIC BARRIER WALL WITH ROAD CLOSED SIGN</p> <p>ROAD CLOSED R11-2 48 X 30</p> <p>WI-6R(0)-6030 (ABOVE BARRICADE)</p>	<p>⑩ ROAD CLOSED AHEAD W20-3 36 X 36</p>
<p>①A ROAD CLOSED 0.7 MILES AHEAD LOCAL TRAFFIC ONLY W20-210 36 X 36</p>	<p>②R ROAD CLOSED 1500 FT AHEAD LOCAL TRAFFIC ONLY W20-310 36 X 36</p> <p> M4-10 48 X 18</p>	<p>④ ROAD CONSTRUCTION AHEAD W20-5 36 X 36</p>	<p>⑤W SCHICK ROAD WEST</p> <p> M4-9 30 X 24</p>	<p>⑦ SCHICK ROAD CLOSED</p> <p> M4-9 30 X 24</p>	<p>⑨ END DETOUR M4-8a 24 X 18</p>	<p>⑧ DETOUR AHEAD W20-2 36 X 36</p>

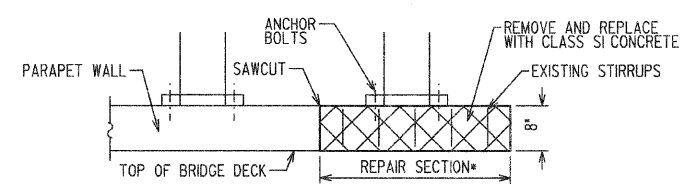
REVISIONS DATE BY DESCRIPTION 10/20/08 AMR IDOT COMMENTS		DATE BY DESCRIPTION		PLOTTED BY: AMR ON DESIGNED BY: VP ON DRAWN BY: AMR ON CHECKED BY: VP ON APPROVED BY: DVM ON	 PAVIA-MARTING & Co. 910 WEST LAKE STREET ROSELLE, IL 60172-3352 (630) 529-8000 FAX (630) 894-4910 Design Firm Professional Registration #184002376	TITLE: SCHICK ROAD BRIDGE REHABILITATION TRAFFIC CONTROL AND DETOUR PLAN	SCALE: NONE DATE: 10/27/08 JOB NO: 2826 SHEET 7 OF 18
---	--	---------------------	--	--	---	---	--

F.A.U. RTE.	SECTION	COUNTY	TOTAL SHEETS	SHEET NO.
1369	08-00082-00-BR	DUPAGE	13	8

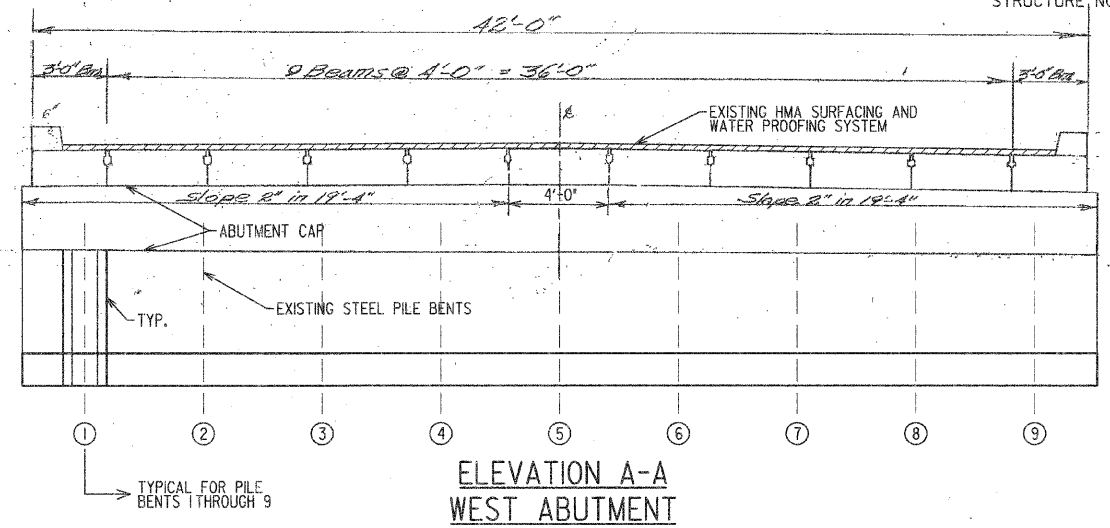
STRUCTURE, NO. 22-3021



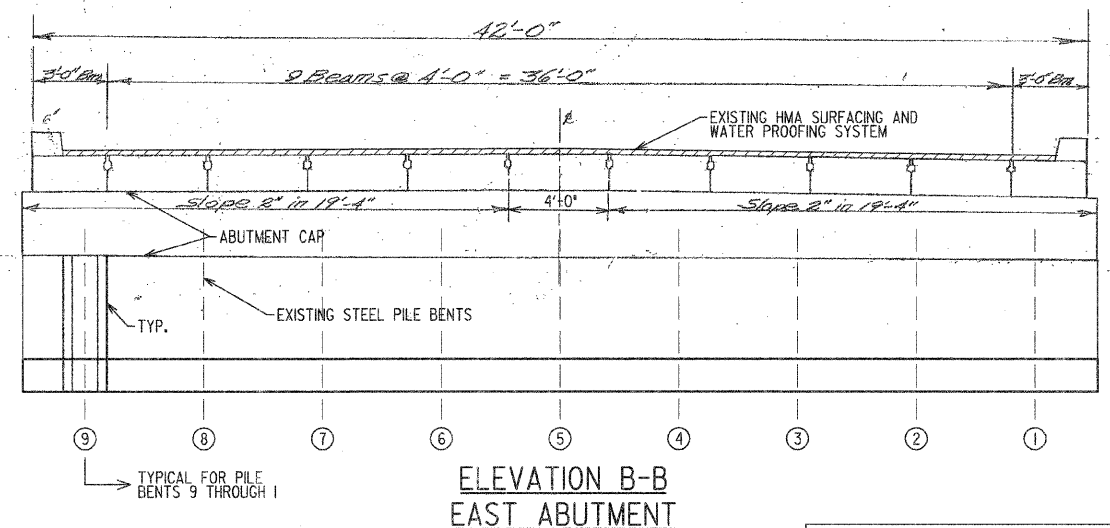
- B THROUGH J INTERIOR BEAM
- A & K OUTER BEAM
- 1 THROUGH 9 PILE BENTS (WEST ABUTMENT)
- 1 THROUGH 9 PILE BENTS (EAST ABUTMENT)



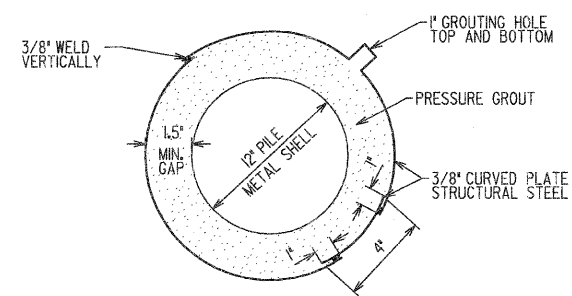
DETAIL FOR STRUCTURAL CONCRETE REPAIR
 *AS DIRECTED BY ENGINEER



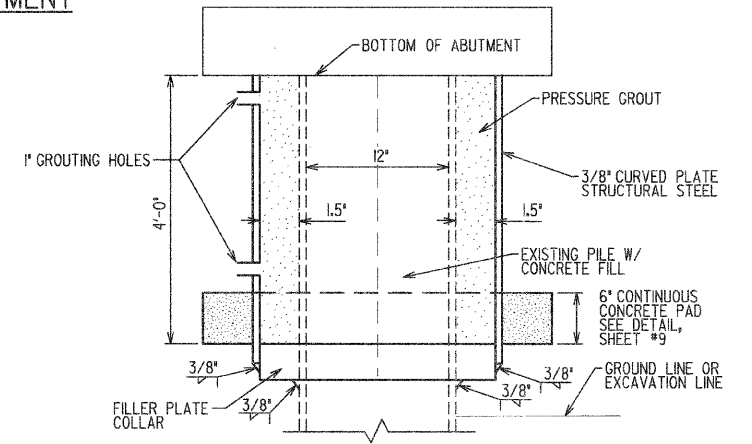
ELEVATION A-A WEST ABUTMENT



ELEVATION B-B EAST ABUTMENT



ENCASING PLATE DETAIL FOR FABRICATION



PILE BENT REPAIR DETAIL 1 THROUGH 9, WEST ABUTMENT 9 THROUGH 1, EAST ABUTMENT

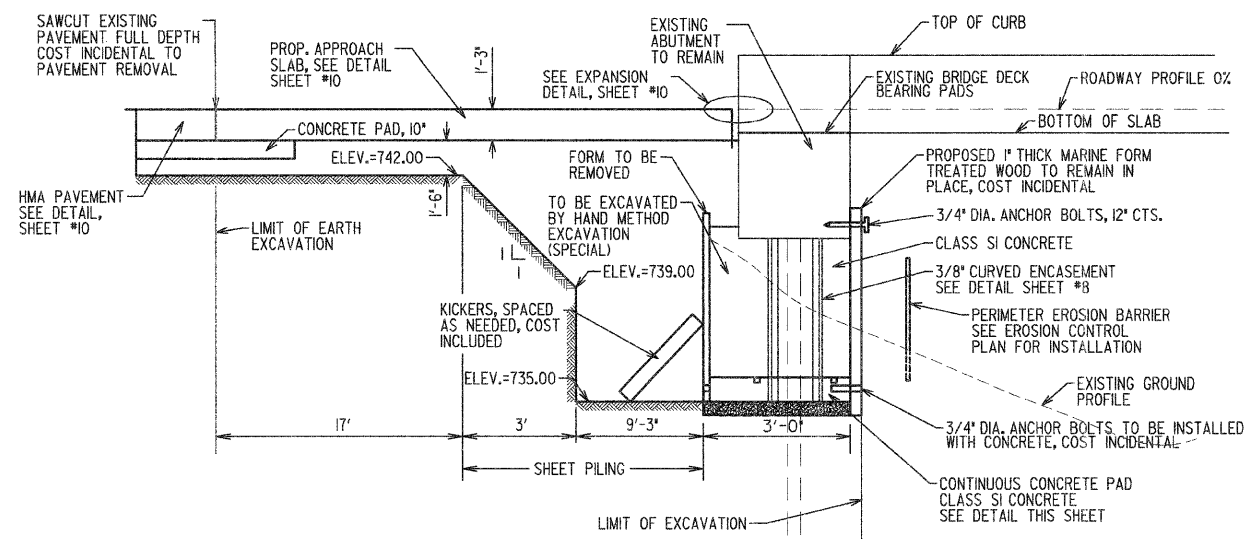
NOTE: FOR REBAR DETAIL, SEE SHEET #9

REVISIONS		DESCRIPTION		DESCRIPTION	
DATE	BY	DATE	BY	DATE	BY

PLOTTED BY: AMR	ON
DESIGNED BY: VP	ON
DRAWN BY: AMR	ON
CHECKED BY: VP	ON
APPROVED BY: DVM	ON

PAVIA-MARTING & Co.
 910 WEST LAKE STREET
 ROSELLE, IL 60172-3352
 (630) 529-8000 FAX (630) 894-4910
 Design Firm Professional Registration #184002376

TITLE:	SCALE: NONE
SCHICK ROAD BRIDGE REHABILITATION	DATE: 10/27/08
PILE BENT ENCASUREMENT DETAIL AND LOCATION	JOB NO. 2826
	SHEET 8 OF 18



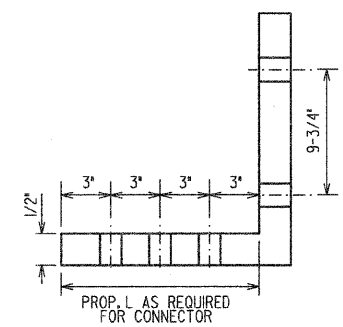
PROPOSED LIMIT OF EXCAVATION DETAIL

TYPICAL FOR EAST AND WEST ABUTMENTS

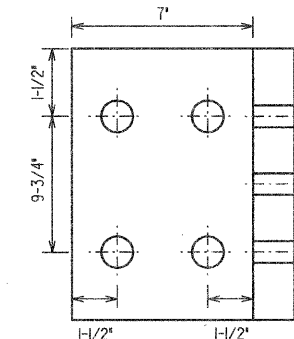
NOTE #1: ALL EXCAVATION SHALL BE DONE FROM ROADWAY EMBANKMENT SIDE. NO EQUIPMENT ENTRY FROM RIVER SIDE WILL BE ALLOWED.

NOTE #2: FOR EXISTING PILE ENCASING DETAIL SEE SHEET #8

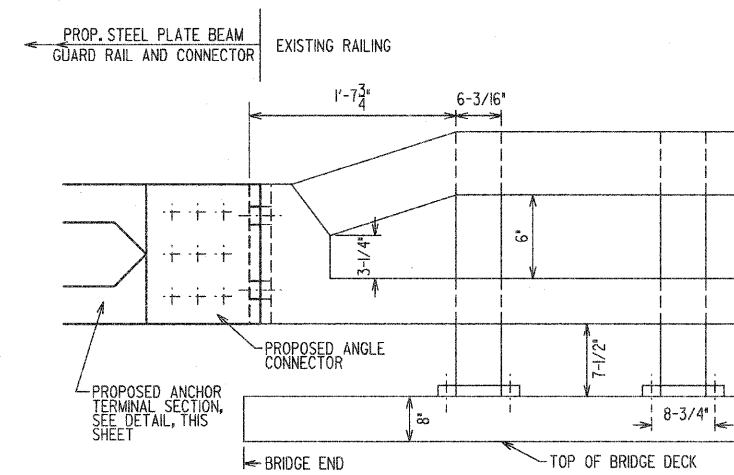
NOTE #3: CONTRACTOR WILL BE REQUIRED TO INSTALL THE FORMS WHICH ARE TO BE REMOVED AFTER THE CLASS SI CONCRETE IS PLACED THROUGHOUT THE LENGTH OF THE ABUTMENT.



CONNECTOR TOP VIEW

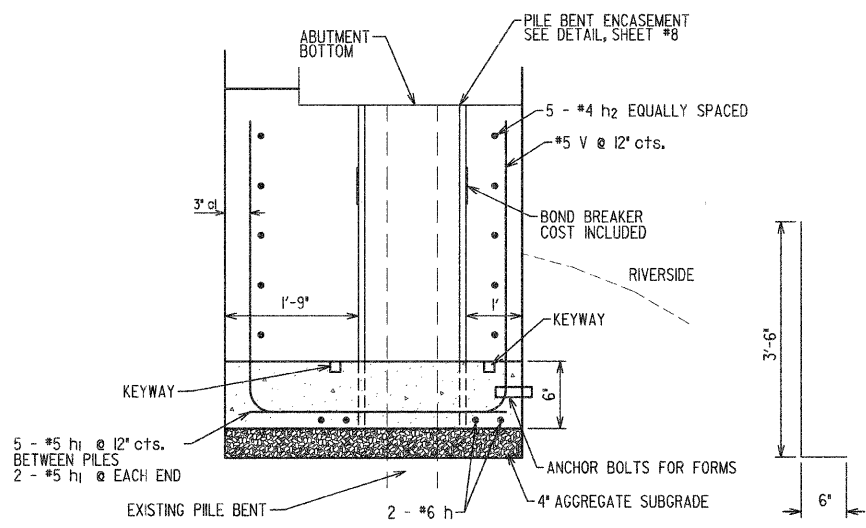


CONNECTOR END VIEW



EXISTING RAILING END SECTION AND PROPOSED CONNECTOR ELEVATION

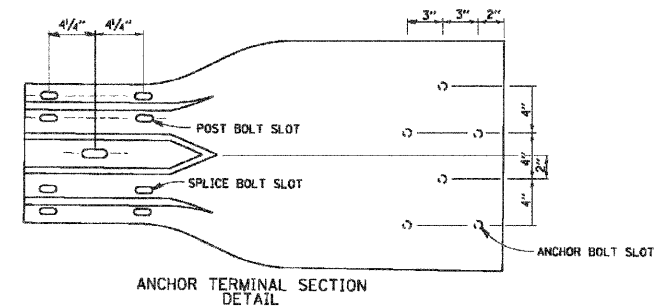
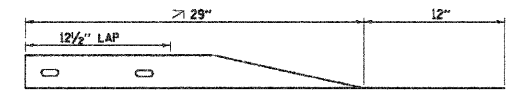
NOTE: CONTRACTOR IS REQUIRED TO VERIFY EXISTING DIMENSIONS BEFORE ORDERING CONNECTOR ACCESSORIES FOR STEEL PLATE BEAM GUARDRAIL. CONTRACTOR WILL BE REQUIRED TO SUBMIT SHOP DRAWINGS TO THE ENGINEER FOR APPROVAL TWO WEEKS PRIOR TO ORDERING MATERIAL. THE COST OF THE PROPOSED CONNECTOR ACCESSORIES ARE INCLUDED IN STEEL PLATE BEAM GUARDRAIL (SPECIAL). COST PER LINEAL FOOT OF CONTRACT UNIT PRICE.



CONTINUOUS CONCRETE WALL DETAIL FOR ENCASEMENT PILES

BILL OF MATERIAL FOR PILE ENCASEMENT EAST AND WEST ABUTMENT

	NO.	SIZE	LENGTH (FT)	WEIGHT (LB)	
V	172	#5	4	718	
h	24	#6	16	577	
h1	78	#5	2	260	
h2	60	#4	16	642	
			REINFORCEMENT TOTAL	2,197	LBS
			CONCRETE - CLASS I	39.0	CY
			METAL SHEEL PILE ENCASEMENT	18	EACH



ANCHOR TERMINAL SECTION DETAIL

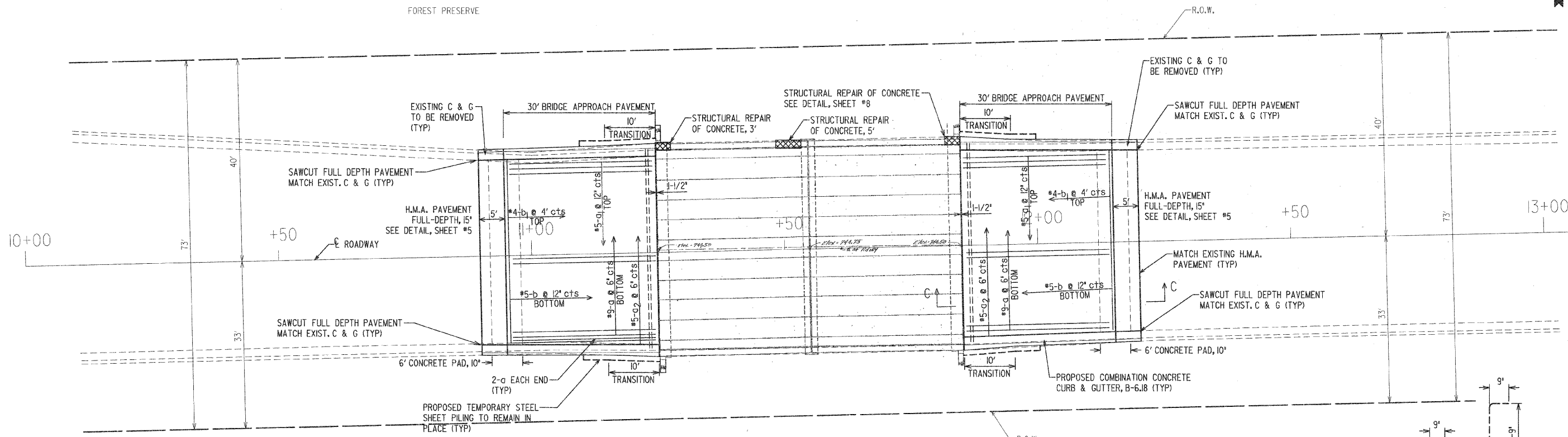
REVISIONS		DATE		BY		DESCRIPTION	
DATE	BY	DATE	BY	DESCRIPTION	DATE	BY	DESCRIPTION

PLOTTED BY: AMR	ON	1
DESIGNED BY: VP	ON	
DRAWN BY: AMR	ON	
CHECKED BY: VP	ON	
APPROVED BY: DVM	ON	

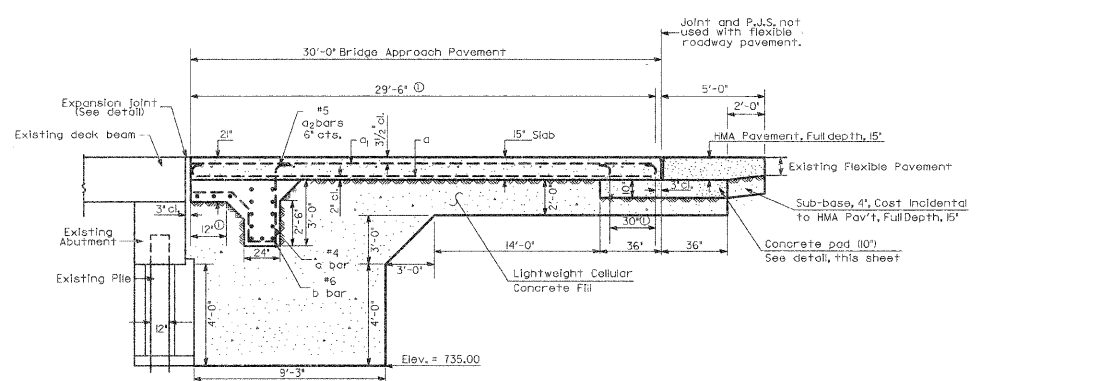
PAVIA-MARTING & Co.
 910 WEST LAKE STREET
 ROSELLE, IL 60172-3352
 (630) 529-8000 FAX (630) 894-4910
 Design Firm Professional Registration #184002376

TITLE: **SCHICK ROAD BRIDGE REHABILITATION ABUTMENT CURTAIN WALL DETAIL**

SCALE: NONE
 DATE: 10/2/08
 JOB NO: 2826
 SHEET 9 OF 18

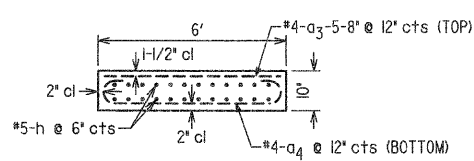


PLAN VIEW
1"=10'



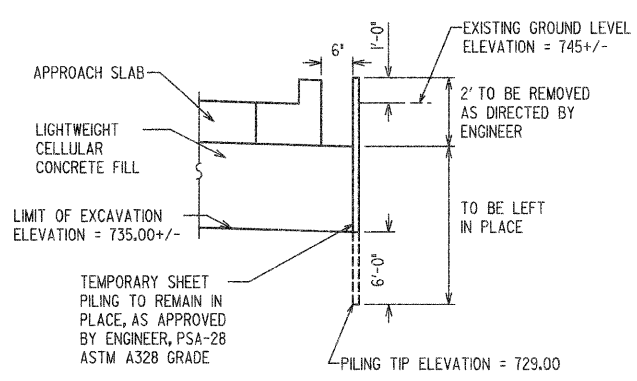
SECTION C-C
NOT TO SCALE

Stagger No. 9 a bars as shown on plan - full width



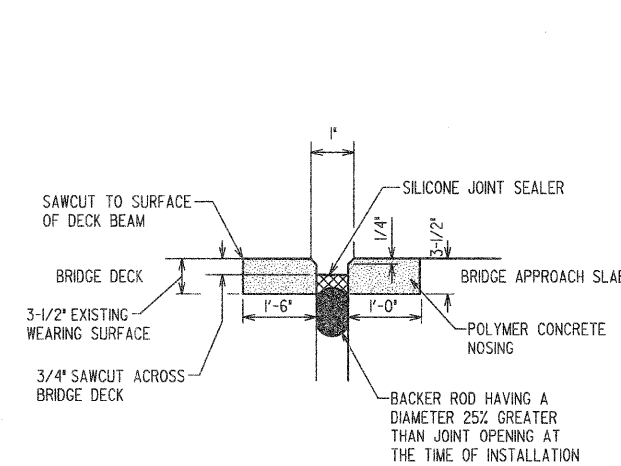
CONCRETE PAD, 10" DETAIL
NOT TO SCALE

COST OF REINFORCEMENT IS INCLUDED IN THE UNIT PRICE

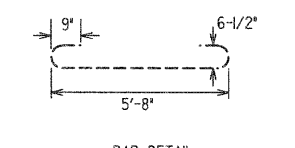
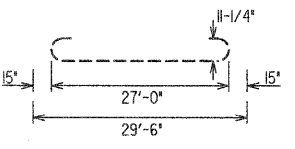
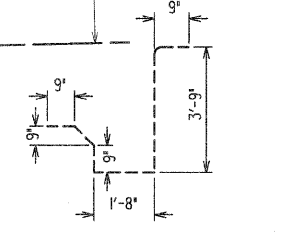


TEMPORARY SHEET PILING TO REMAIN IN PLACE DETAIL
NOT TO SCALE

NOTE: THE TEMPORARY SHEET PILING WILL REMAIN IN PLACE. THE CONTRACTOR IS REQUIRED TO REMOVE THE TOP PORTION OF PILING TO THE ELEVATION GIVEN BY THE ENGINEER, MIN. 2' BELOW THE NATURAL GROUND



SILICONE JOINT SEALER DETAIL
NOT TO SCALE



BAR DETAILS ARE FOR INFORMATION FOR ORDERING MATERIALS ONLY

NOTE: THE COST OF REINFORCEMENT IS TO BE CONSIDERED INCLUDED IN THE PRICE OF BRIDGE APPROACH SLAB SPECIAL PER SQ YD UNIT PRICE

REVISIONS:		DESCRIPTION		DESCRIPTION	
DATE	BY	DATE	BY	DATE	BY

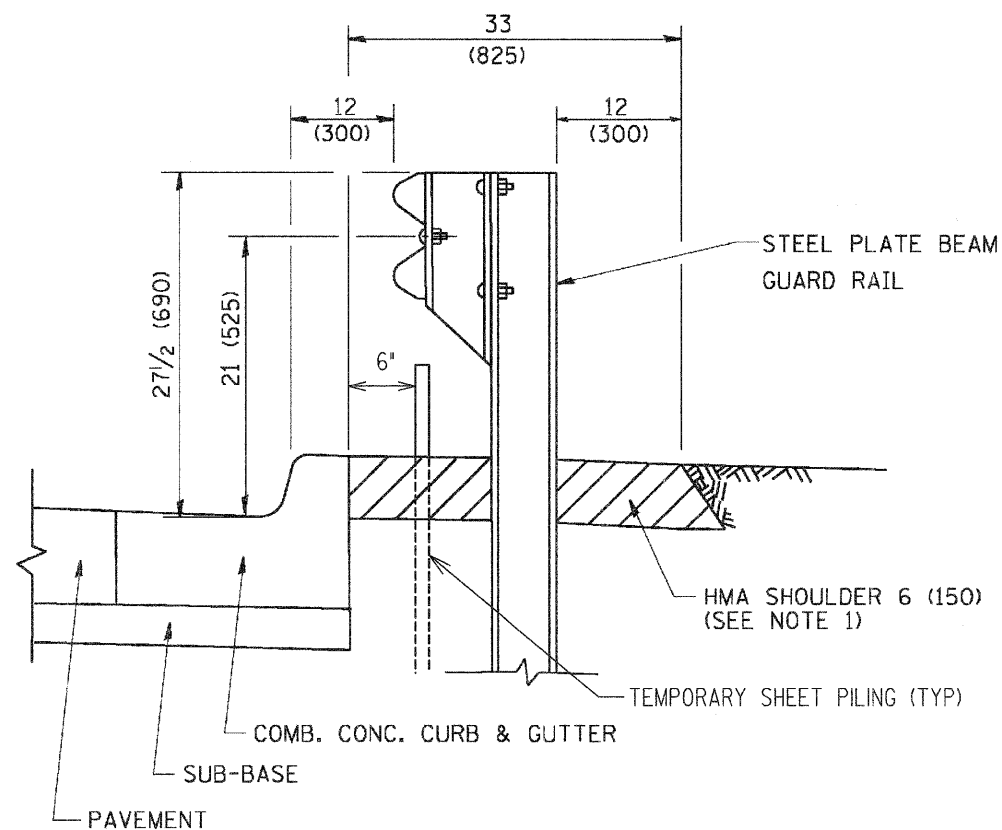
PLOTTED BY: AMR	ON
DESIGNED BY: VP	ON
DRAWN BY: AMR	ON
CHECKED BY: VP	ON
APPROVED BY: DVM	ON

PVIA-MARTING & Co.
 910 WEST LAKE STREET
 ROSELLE, IL 60172-3352
 (630) 529-8000 FAX (630) 894-4910
 Design Firm Professional Registration #184002376

TITLE: **SCHICK ROAD BRIDGE REHABILITATION BRIDGE APPROACH PAVEMENT DETAIL**

SCALE: 1"=10'
 DATE: 10/2/08
 JOB NO: 2826
 SHEET 10 OF 18

F.A.U. RTE.	SECTION	COUNTY	TOTAL SHEETS	SHEET NO.
1369	08-00082-00-BR	DUPAGE	13	11

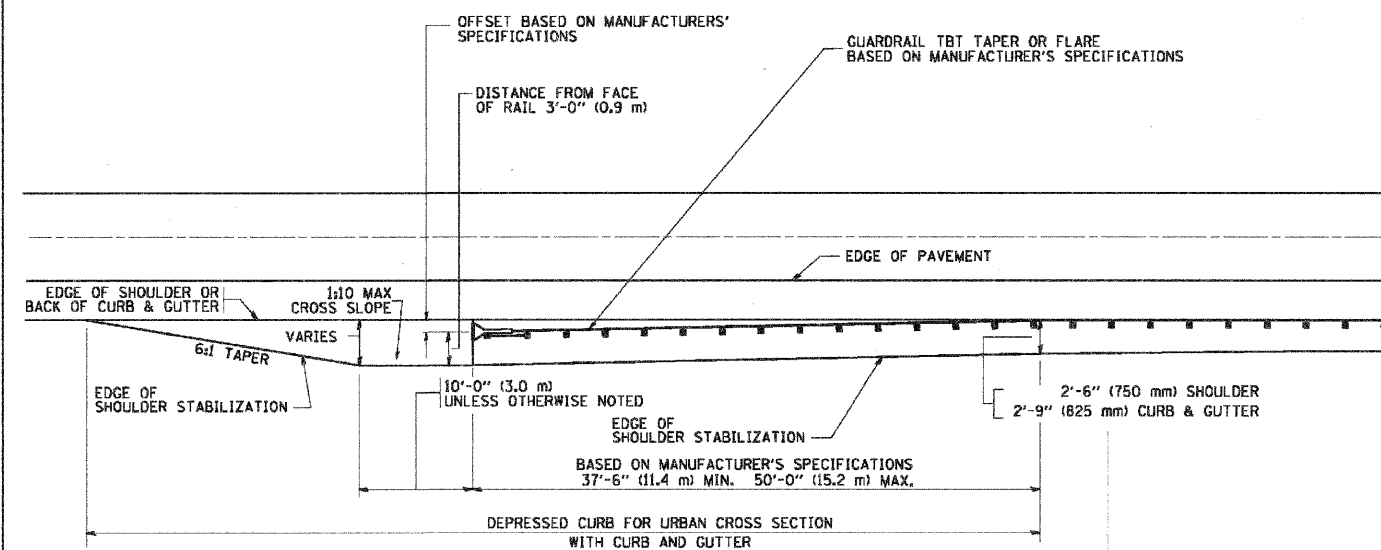


- NOTES: 1. THE HMA SHOULDER SHALL EXTEND UNDER THE TRAFFIC BARRIER TERMINAL
2. GUARD RAIL MAY BE PLACED AT THE BACK OF CURB WHEN DIRECTED BY THE ENGINEER.

BASIS OF PAYMENT: HMA SHOULDER 6 (150) WILL BE PAID FOR AT THE CONTRACT UNIT PRICE PER SQUARE YARD (SQUARE METER) FOR "HOT-MIX ASPHALT SHOULDER 6" (150 mm)".

STEEL PLATE BEAM GUARD RAIL AND TRAFFIC BARRIER TERMINAL, OF THE TYPE SPECIFIED WILL BE PAID FOR SEPARATELY.

DETAILS FOR STEEL PLATE BEAM GUARD RAIL ADJACENT TO CURB AND GUTTER
 [FOR ROADWAY SPEED 35 MPH (60 kmh) TO 45 MPH (70 kmh)]



STABILIZATION AT TBT TY. 1 SPL.

TBT = TRAFFIC BARRIER TERMINAL
 ALL DIMENSIONS ARE IN INCHES (MILLIMETERS) UNLESS OTHERWISE SHOWN.

REVISIONS		ILLINOIS DEPARTMENT OF TRANSPORTATION	
NAME	DATE		
M. DE YONG	09-22-90		
M. DE YONG	07-14-92		
R. SHAH	09/09/94		
R. SHAH	10/25/94		
R. SHAH	02/23/95		
A. ABBAS	03/21/97		
E. GOMEZ	08/28/00		
R. BORO	01/01/07		

SCALE: VERT. NONE
 HORIZ. NONE

DRAWN BY Jls
 CHECKED BY

BD600-10 (BD 34)

REVISIONS:		DESCRIPTION		DESCRIPTION	
DATE	BY	DATE	BY	DESCRIPTION	DESCRIPTION

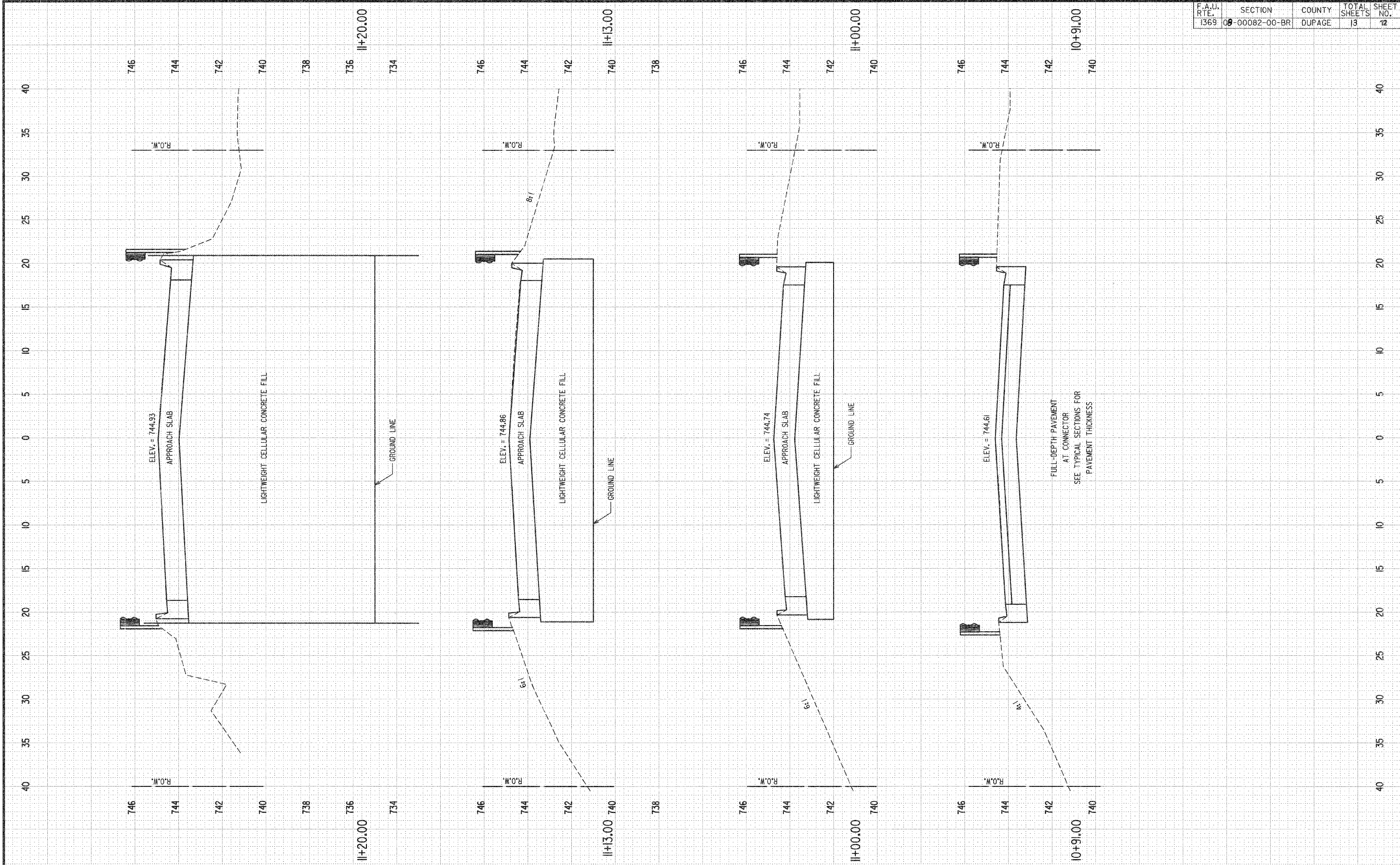
PLOTTED BY:	AMR	ON
DESIGNED BY:	VP	ON
DRAWN BY:	AMR	ON
CHECKED BY:	VP	ON
APPROVED BY:	DVM	ON

PAVIA-MARTING & CO.
 910 WEST LAKE STREET
 ROSELLE, IL 60172-3352
 (630) 529-8800 FAX (630) 894-4910
 Design Firm Professional Registration #184802376

TITLE: **SCHICK ROAD BRIDGE REHABILITATION**
STEEL PLATE BEAM GUARD RAIL DETAIL

SCALE: NONE
 DATE: 10/2/08
 JOB NO: 2826
 SHEET 11 OF 18

F.A.U. RTE.	SECTION	COUNTY	TOTAL SHEETS	SHEET NO.
1369	09-00082-00-BR	DUPAGE	13	12



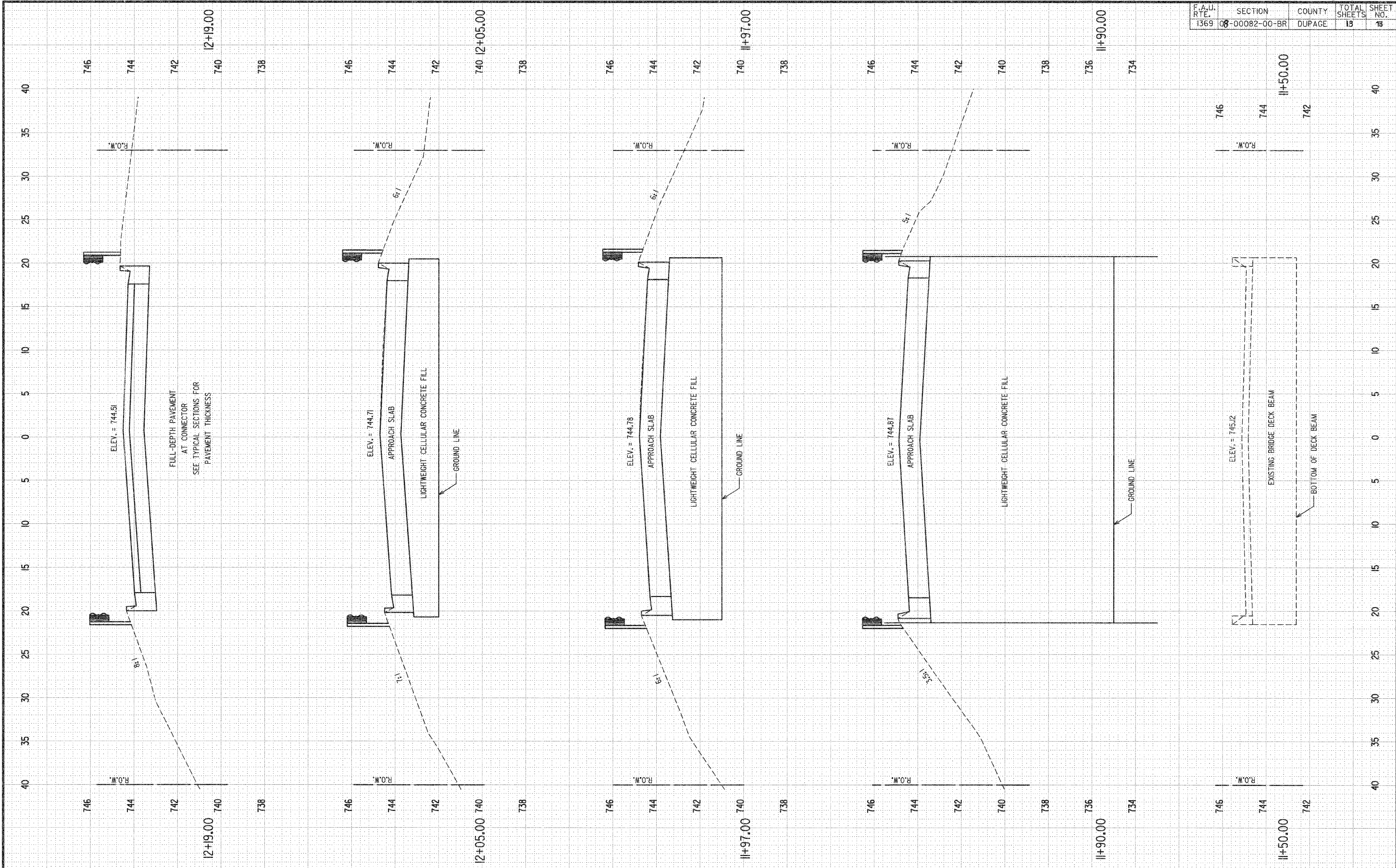
REVISIONS:			REVISIONS:		
DATE	BY	DESCRIPTION	DATE	BY	DESCRIPTION

PLOTTED BY:	AMR	ON
DESIGNED BY:	VP	ON
DRAWN BY:	AMR	ON
CHECKED BY:	VP	ON
APPROVED BY:	DVM	ON

PAVIA-MARTING & CO.
 910 WEST LAKE STREET
 ROSELLE, IL 60172-3352
 (630) 529-8000 FAX (630) 894-4910
 Design Firm Professional Registration #184002376

TITLE:	SCALE: H=1"=5'-0", V=1"=2'-0"
SCHICK ROAD BRIDGE REHABILITATION	DATE: 10/27/08
CROSS SECTIONS STA. 10+50 TO 11+20	JOB NO: 2826
	SHEET 12 OF 18

F.A.I. RTE.	SECTION	COUNTY	TOTAL SHEETS	SHEET NO.
1369	08-00082-00-BR	DUPAGE	13	13



REVISIONS:		DESCRIPTION		DESCRIPTION	
DATE	BY	DATE	BY	DATE	BY

PLOTTED BY: AMR	ON
DESIGNED BY: VP	ON
DRAWN BY: AMR	ON
CHECKED BY: VP	ON
APPROVED BY: DVM	ON

PAVIA-MARTING & Co.
 910 WEST LAKE STREET
 ROSELLE, IL 60172-3352
 (630) 529-8000 FAX (630) 894-4910
 Design Firm Professional Registration #184002376

TITLE: **SCHICK ROAD BRIDGE REHABILITATION**
CROSS SECTIONS STA. 11+20 TO 12+25

SCALE: 1"=5' H, 1"=2' V
 DATE: 10/22/08
 JOB NO: 2826
 SHEET 13 OF 18