

STATE OF ILLINOIS
 DEPARTMENT OF TRANSPORTATION
 DIVISION OF HIGHWAYS

**PROPOSED
 HIGHWAY PLANS**

FAI ROUTE 80 (I-80)
 SECTION (81-1)R-1
 PROJECT NHF-080-1(146)000
 ROCK ISLAND COUNTY
 C-92-117-08

F.A.I. RTE.	SECTION	COUNTY	TOTAL SHEETS	SHEET NO.
80	(81-1) R-1	ROCK ISLAND	292	1
FED. ROAD DIST. NO.		ILLINOIS	CONTRACT NO. 64933	

FOR INDEX OF SHEETS, SEE SHEET NO. 2
 FOR STATE STANDARDS, SEE SHEET NO. 2

TRAFFIC VOLUMES:

I-80

CURRENT ADT: 26,000 (2005) 36% TRUCKS

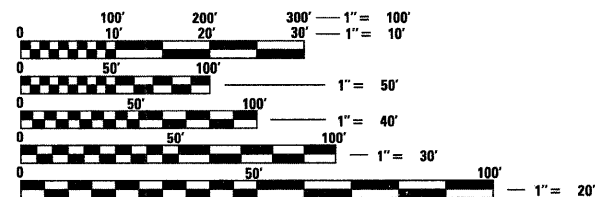
OMISSIONS

STA 16+69.53 TO 51+52

IMPROVEMENT BEGINS STA. 1492+00

STA EQUATION = IOWA STA 1497+80.00 =
 IL STA 16+69.53

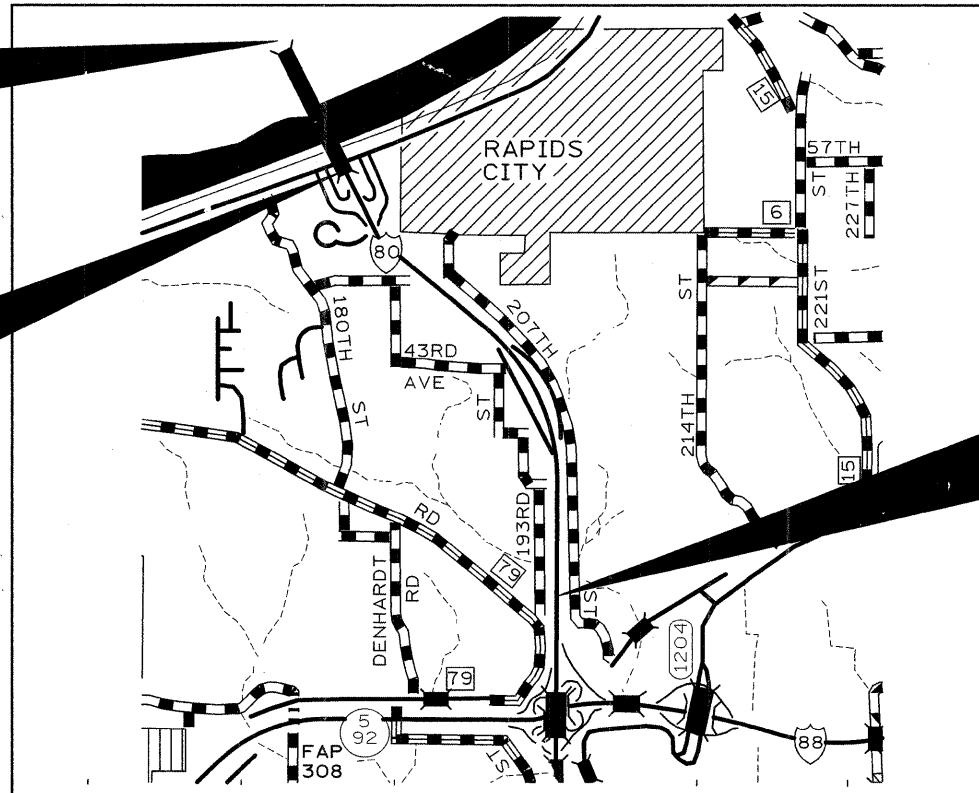
SECTION BEGINS STA. 51+52



FULL SIZE PLANS HAVE BEEN PREPARED USING STANDARD ENGINEERING SCALES. REDUCED SIZED PLANS WILL NOT CONFORM TO STANDARD SCALES. IN MAKING MEASUREMENTS ON REDUCED PLANS, THE ABOVE SCALES MAY BE USED.

J.U.L.I.E.
 JOINT UTILITY LOCATION INFORMATION FOR EXCAVATION
 1-800-892-0123
 OR 811

PROJECT ENGINEER: REBECCA MARRUFFO
 PROJECT MANAGER: ED CONDERMAN (815)-284-5947
 HAMPTON TOWNSHIP, SECTION 10, 11, 14
 CONTRACT NO. 64933



DESIGN DESIGNATION - 4,800 (28) FREEWAY 79.60 (CRCP-20)

NET LENGTH OF IMPROVEMENT = 12,623 FEET = 2.39 MILES
 GROSS LENGTH OF IMPROVEMENT = 16,685 FEET = 3.16 MILES



LOCATION OF SECTION INDICATED THUS: - [thick black line] -

SECTION ENDS STA. 177+75
 IMPROVEMENT ENDS STA. 187+00

STATE OF ILLINOIS
 DEPARTMENT OF TRANSPORTATION
 DIVISION OF HIGHWAYS

SUBMITTED December 11, 2008
 George F. Ryan
 DEPUTY DIRECTOR OF HIGHWAYS, REGION ENGINEER

January 30, 2009
 Charles A. Ingersoll
 ENGINEER OF DESIGN AND ENVIRONMENT

January 30, 2009
 Christine M. Reed
 DIRECTOR OF HIGHWAYS, CHIEF ENGINEER

PRINTED BY THE AUTHORITY
 OF THE STATE OF ILLINOIS

REVISED 2/23/09