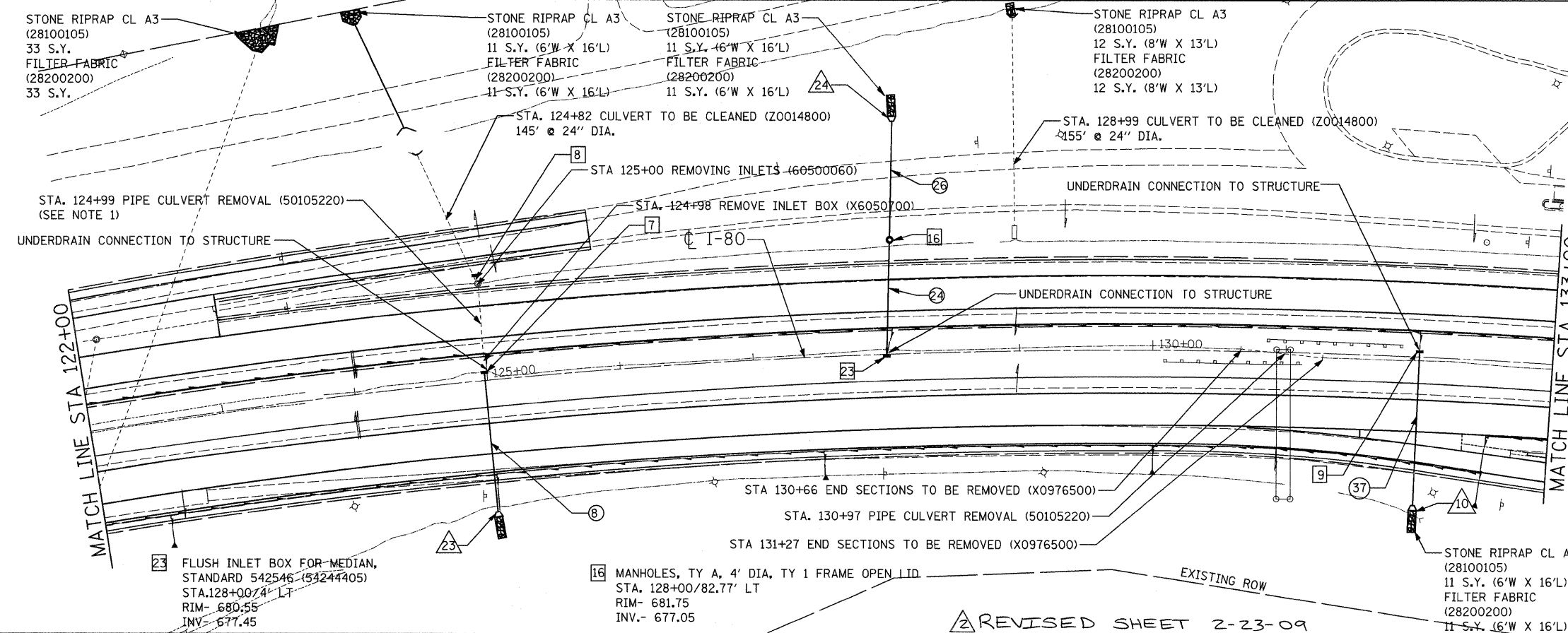


- 7 INLET BOX, STANDARD 542516 (54245805)
STA. 111+00/105.6' LT
INV.- 686.20
- 6 FLUSH INLET BOX FOR MEDIAN,
STANDARD 542546 (54244405)
STA. 111+00/3.1' LT
RIM- 689.11
INV.- 686.50
- 8 PIPE CULVERTS, CL. A,
TY. 2-24" (542A1069)
103' @ 0.30%
TBF= 30 CY



- 10 INLET BOX, STANDARD 542516 (54245805)
STA. 132+00/112.1' RT
INV.- 678.33
- 23 PRECAST REINFORCED CONCRETE FLARED
END SECTIONS 24" (54213669)
STA. 124+97/99' RT
INV.- 676.14
- 24 PRECAST REINFORCED CONCRETE FLARED
END SECTIONS 24" (54213669)
STA. 128+00/210.8' RT
INV.- 676.41
- 8 PIPE CULVERTS, CL. A,
TY. 2 24" (542A1069)
101' @ 0.50%
TBF= 65 CY
- 24 PIPE CULVERTS, CL. A,
TY. 2 24" (542A1069)
75' @ 0.50%
TBF= 52 CY
- 26 PIPE CULVERTS, CL. A,
TY. 2 24" (542A1069)
127' @ 0.50%
TBF= 64 CY
- 37 PIPE CULVERTS, CL. A,
TY. 2 24" (542A1069)
114' @ 0.50%
TBF= 64 CY
- 7 FLUSH INLET BOX FOR MEDIAN,
STANDARD 542546 (54244405)
STA. 124+97/3.9' LT
RIM- 680.32
INV.- 676.63
- 8 FLUSH INLET BOX FOR MEDIAN,
STANDARD 542546 (54244405)
STA. 124+98/76.9' LT
RIM- 682.46
INV.- 677.73
CONNECT TO EXISTING RCPC
- 9 FLUSH INLET BOX FOR MEDIAN,
STANDARD 542546 (54244405)
STA. 132+00/1' LT
RIM- 684.34
INV.- 678.91

REVISED SHEET 2-23-09

FILE NAME = c:\pwwork\pwwork\projects\grant\pwwork\dms342287\d084834r.dgn

CG
Ciorba Group, Inc.
 CONSULTING ENGINEERS
 5507 North Cumberland Avenue, Suite 402
 Chicago, Illinois 60656
 Tel. 773.775.4009 Fax 773.775.4014

USER NAME = grantpm	DESIGNED - AL	REVISED -
PLOT SCALE = 50.0000' / IN.	DRAWN - EPS	REVISED -
PLOT DATE = Wed Feb 11 14:57:56	CHECKED - DMM	REVISED -
DATE = Wed Feb 11 14:57:56	DATE = Wed Feb 11 14:57:56	DATE = Wed Feb 11 14:57:56

**STATE OF ILLINOIS
 DEPARTMENT OF TRANSPORTATION**

**I-80
 PROPOSED DRAINAGE PLAN
 STA. 108 + 00 TO STA. 133 + 00**

SCALE: 1" = 50' SHEET NO. OF SHEETS

F.A.I. RTE. 80	SECTION (81-1R-1)	COUNTY ROCK ISLAND	TOTAL SHEETS 292	SHEET NO. 145
FED. ROAD DIST. NO. ILLINOIS FED. AID PROJECT			CONTRACT NO. 64933	