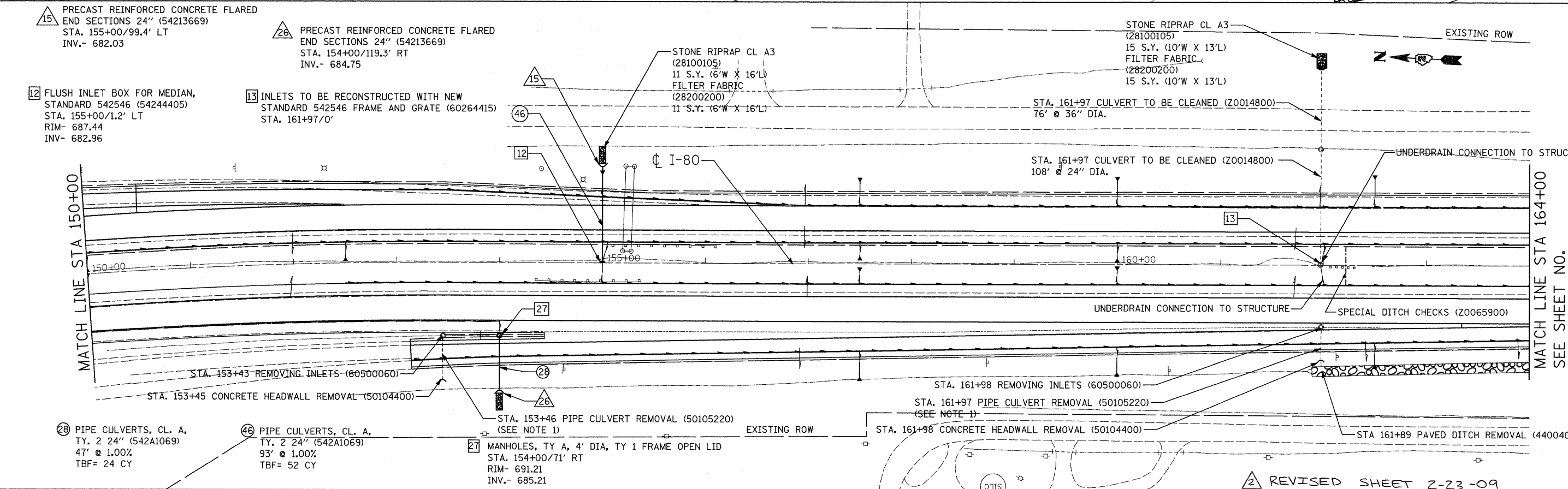


- 24 FLUSH INLET BOX FOR MEDIAN, STANDARD 542546 (54244405)
STA. 143+75/87' RT
RIM- 691.32
INV- 688.21
- 25 FLUSH INLET BOX FOR MEDIAN, STANDARD 542546 (54244405)
STA. 143+75/3.8' LT
RIM- 690.78
INV- 687.57
- 26 MANHOLES, TY A, 4' DIA, TY 1 FRAME OPEN LID
STA. 143+75/76' LT
RIM- 693.21
INV.- 687.21
- 25 PRECAST REINFORCED CONCRETE FLARED END SECTIONS 24" (54213669)
STA. 143+75/124.4' LT
INV.- 686.54

- 50 PIPE CULVERTS, CL. A, TY. 2 24" (542A1069)
88' @ .50%
TBF= 65 CY
- 51 PIPE CULVERTS, CL. A, TY. 2 24" (542A1069)
71' @ .50%
TBF= 94 CY
- 52 PIPE CULVERTS, CL. A, TY. 2 24" (542A1069)
44' @ .50%
TBF= 40 CY

STONE RIPRAP CL A3 (28100105)
20 S.Y. (18'W X 10'L)
FILTER FABRIC (28200200)
20 S.Y. (18'W X 10'L)



- 15 PRECAST REINFORCED CONCRETE FLARED END SECTIONS 24" (54213669)
STA. 155+00/99.4' LT
INV.- 682.03
- 26 PRECAST REINFORCED CONCRETE FLARED END SECTIONS 24" (54213669)
STA. 154+00/119.3' RT
INV.- 684.75
- 12 FLUSH INLET BOX FOR MEDIAN, STANDARD 542546 (54244405)
STA. 155+00/1.2' LT
RIM- 687.44
INV- 682.96
- 13 INLETS TO BE RECONSTRUCTED WITH NEW STANDARD 542546 FRAME AND GRATE (60264415)
STA. 161+97/0'

- 29 PIPE CULVERTS, CL. A, TY. 2 24" (542A1069)
47' @ 1.00%
TBF= 24 CY
- 46 PIPE CULVERTS, CL. A, TY. 2 24" (542A1069)
93' @ 1.00%
TBF= 52 CY
- 27 MANHOLES, TY A, 4' DIA, TY 1 FRAME OPEN LID
STA. 154+00/71' RT
RIM- 691.21
INV.- 685.21

STONE RIPRAP CL A3 (28100105)
15 S.Y. (10'W X 13'L)
FILTER FABRIC (28200200)
15 S.Y. (10'W X 13'L)

REVISED SHEET Z-23-09

FILE NAME = c:\pex\work\pawdos\1\gran\tpm\dmcs34287\4884854r.dgn

CG
Ciorba Group, Inc.
CONSULTING ENGINEERS
5507 North Cumberland Avenue, Suite 402
Chicago, Illinois 60656
Tel. 773.775.4009 Fax 773.775.4014

USER NAME = gran\tpm	DESIGNED - AL	REVISED -
PLOT SCALE = 50.0000' / IN.	DRAWN - EPS	REVISED -
PLOT DATE = Wed Feb 11 14:57:58	CHECKED - DMM	REVISED -
DATE = Wed Feb 11 14:57:58	DATE = Wed Feb 11 14:57:58	DATE = Wed Feb 11 14:57:58

**STATE OF ILLINOIS
DEPARTMENT OF TRANSPORTATION**

**I-80
PROPOSED DRAINAGE PLAN
STA. 139+00 TO STA. 164+00**

SCALE: 1" = 50' SHEET NO. OF SHEETS

F.A.I. RTE. 80	SECTION (81-1R-1)	COUNTY ROCK ISLAND	TOTAL SHEETS 292	SHEET NO. 147
FED. ROAD DIST. NO. ILLINOIS FED. AID PROJECT			CONTRACT NO. 64933	