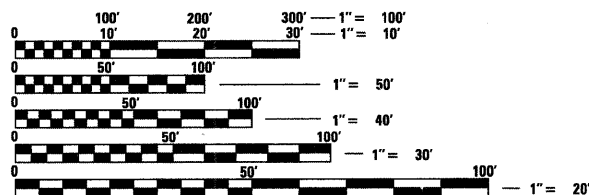


INDEX OF SHEETS

- 1 Cover Sheets and Index of Sheets
- 2 Summary of Quantities
- 3-4 General Notes
- 5-13 Typical Sections
- 14-17 Schedule of Quantities
- 18-21 ROW and Erosion Control Sheets
- 22-23 Alignment, Ties and Benchmark Sheets
- 24-27 Plan and Profiles
- 28-31 End Section Details
- 32-35 Staging
- 36-39 Boring Logs
- 40 Grading Around Wingwalls (20.4)
- 40 Detail of Hot-Mix Asphalt Shoulder at Guardrail (23.4)
- 40 Delineator and Post (37.4)
- 40 Typical Benching Detail on Existing Embankment (50.4)
- 41 Lettering for Nameplate (89.4)
- 41 Tree Replacement Schedule (90.4)
- 41 Stop Line Sign For Temporary Signals (99.4)
- 42 Erosion Control Detail For Silt Filter Fence (29.2)
- 42 Field Tile Junction Vaults (30.2)
- 43 Informational Warning Sign (For Narrow Travel Lanes)(39.2)
- 43 Witness Markers & Permanent Survey Markers (66.2)
- 44 Storm Water Pollution Prevention Plan Erosion Control Plan (2.1)
- 45-47 Typical Pavement Marking (41.1)
- 48 Details of Planting and Bracing Trees (92.1)
- 49-59 Cross Sections

STATE STANDARDS

- 000001-05 Standard Symbols, Abbreviations and Patterns
- 001001-02 Areas of Reinforcement Bars
- 280001-04 Temporary Erosion Control Systems
- 442201-03 Class C and D Patches
- 515001-03 Name Plate For Bridges
- 630001-08 Steel Plate Beam Guardrail
- 630201-06 PCC/HMA Stabilization at Steel Plate Beam Guardrail
- 630301-05 Shoulder Widening for Type 1 (Special) Guardrail Terminals
- 635001-01 Delineators
- 635006-03 Reflector and Terminal Marker Placement
- 635011-02 Reflector Marker and Mounting Details
- 666001-01 Right-of-Way Markers
- 701006-03 Off-Rd Operations, 2L, 2W, 15' to 24" From Pavement Edge
- 701011-02 Off - Rd Moving Operations, 2L, 2W, Day Only
- 701201-03 Lane Closure, 2L, 2W, Day Only, For Speeds \geq 45 MPH
- 701306-02 Lane Closure 2L, 2W Slow Moving Operations Day Only, For Speeds \geq 45 MPH
- 701321-10 Lane Closure 2L, 2W Bridge Repair With Barrier
- 701901-01 Traffic Control Devices
- 704001-05 Temporary Concrete Barrier
- 720011-01 Metal Posts for Signs, Markers, and Delineators
- 728001-01 Telescoping Steel Sign Support
- 729001-01 Applications of Types A & B Metal Posts (For Signs and Markers)
- 780001-02 Typical Pavement Markings
- 886001-01 Detector Loop Installations
- 886006-01 Typical Layout For Detection Loops



FULL SIZE PLANS HAVE BEEN PREPARED USING STANDARD ENGINEERING SCALES. REDUCED SIZED PLANS WILL NOT CONFORM TO STANDARD SCALES. IN MAKING MEASUREMENTS ON REDUCED PLANS, THE ABOVE SCALES MAY BE USED.

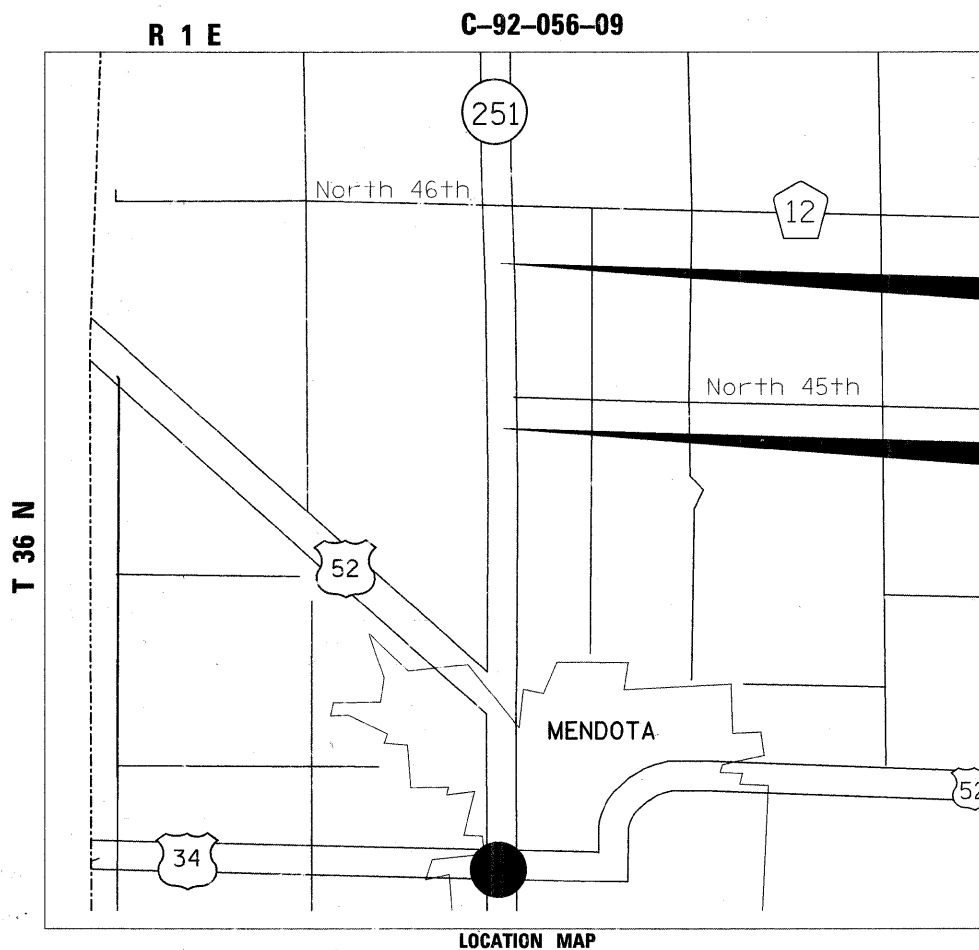
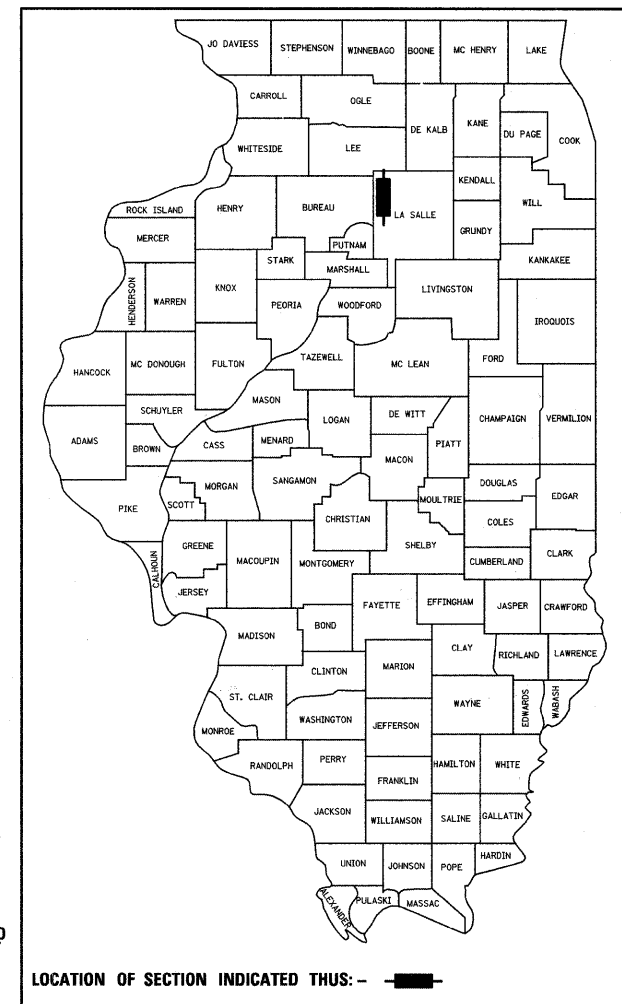
J.U.L.I.E.
JOINT UTILITY LOCATION INFORMATION FOR EXCAVATION
1-800-892-0123
OR 811

PROJECT ENGINEER – BECKY MARRUFFO
SQUAD LEADER – JASON FORD (815/284-5942)
CONSULTANT (END SECTIONS)– JAMES HAMILTON
HAMILTON ENGINEERING, INC (217/245-7164)
Mendota Township – Sections 20,21
CONTRACT NO. 64A07

STATE OF ILLINOIS
DEPARTMENT OF TRANSPORTATION
DIVISION OF HIGHWAYS
PROPOSED
HIGHWAY PLANS
FAS ROUTE 1177 (IL 251)
SECTION 111T
PROJECT ACRS 1177(113)
LASALLE COUNTY

F.A.S. RTE.	SECTION	COUNTY	TOTAL SHEETS	SHEET NO.
1177	111T	Lasalle	99	1
FED. ROAD DIST. NO.		ILLINOIS	CONTRACT NO. 64A07	

D-92-055-04



2520 + 81
PIKE CREEK
EXISTING BRIDGE REMOVED AND REPLACED WITH A TRIPLE 8'X8' TRIPLE CELL PRECAST BOX CULVERT

2472 + 75
EXISTING CULVERT REMOVED, RCP FILLED, REPLACED WITH AN 8' X 4' PRECAST BOX CULVERT WITH DROP BOX

GROSS LENGTH = 1170.4 FT. = 0.22 MILE
NET LENGTH = 1170.4 FT. = 0.22 MILE

STATE OF ILLINOIS
DEPARTMENT OF TRANSPORTATION
DIVISION OF HIGHWAYS

SUBMITTED *December 29, 2008*

Gregory F. Ryan
DEPUTY DIRECTOR OF HIGHWAYS, REGION ENGINEER

January 30, 2009
Charles G. Ingersoll
ENGINEER OF DESIGN AND ENVIRONMENT

January 30, 2009
Christine M. Reed
DIRECTOR OF HIGHWAYS, CHIEF ENGINEER

PRINTED BY THE AUTHORITY
OF THE STATE OF ILLINOIS