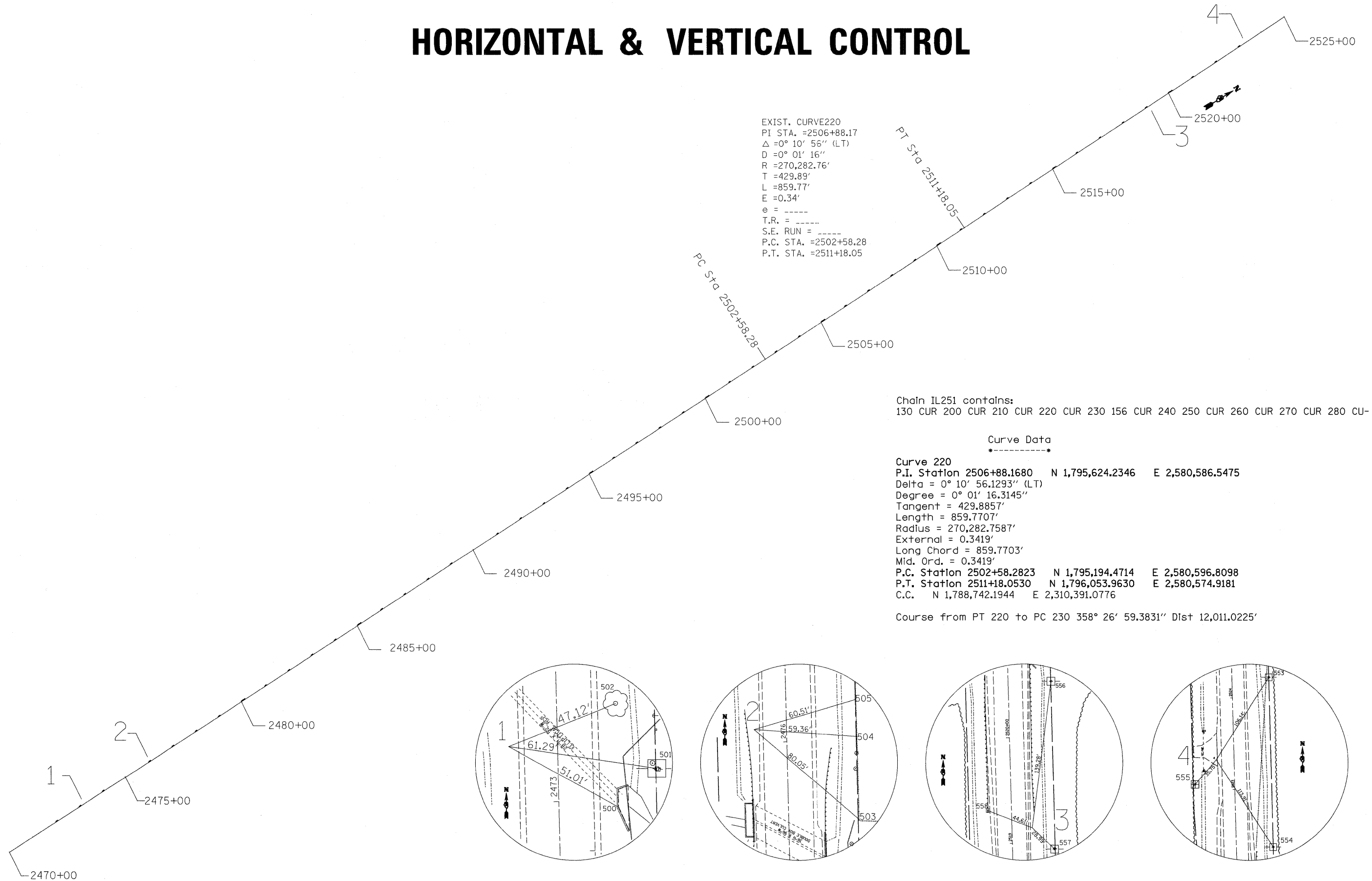


# HORIZONTAL & VERTICAL CONTROL



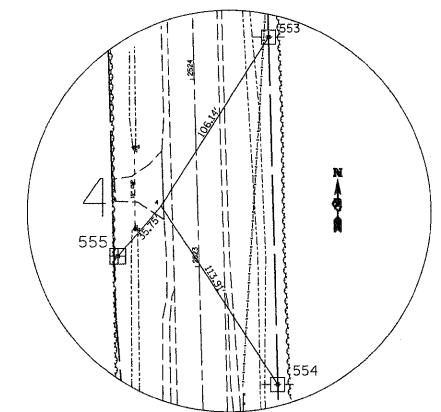
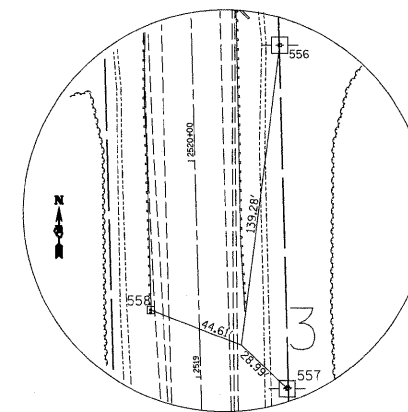
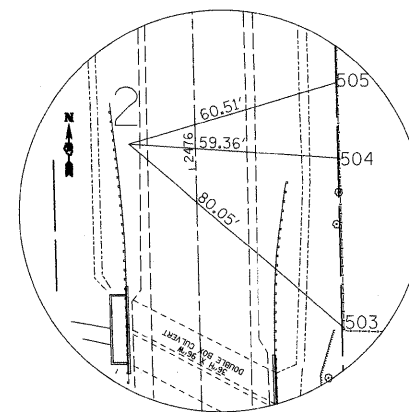
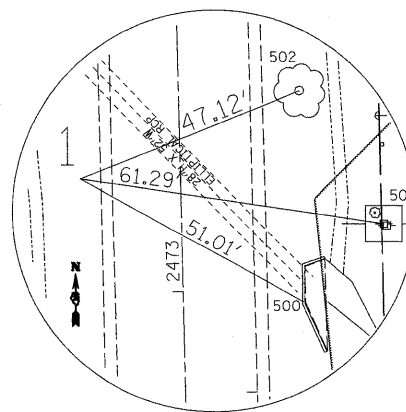
EXIST. CURVE 220  
 PI STA. =2506+88.17  
 $\Delta = 0^\circ 10' 56''$  (LT)  
 $D = 0^\circ 01' 16''$   
 $R = 270,282.76'$   
 $T = 429.89'$   
 $L = 859.77'$   
 $E = 0.34'$   
 $e = \text{-----}$   
 $T.R. = \text{-----}$   
 $S.E. \text{ RUN} = \text{-----}$   
 $P.C. \text{ STA.} = 2502+58.28$   
 $P.T. \text{ STA.} = 2511+18.05$

Chain IL251 contains:  
 130 CUR 200 CUR 210 CUR 220 CUR 230 156 CUR 240 250 CUR 260 CUR 270 CUR 280 CU-

Curve Data

Curve 220  
 P.I. Station 2506+88.1680 N 1,795,624.2346 E 2,580,586.5475  
 $\Delta = 0^\circ 10' 56.1293''$  (LT)  
 $\text{Degree} = 0^\circ 01' 16.3145''$   
 $\text{Tangent} = 429.8857'$   
 $\text{Length} = 859.7707'$   
 $\text{Radius} = 270,282.7587'$   
 $\text{External} = 0.3419'$   
 $\text{Long Chord} = 859.7703'$   
 $\text{Mid. Ord.} = 0.3419'$   
 $P.C. \text{ Station } 2502+58.2823$  N 1,795,194.4714 E 2,580,596.8098  
 $P.T. \text{ Station } 2511+18.0530$  N 1,796,053.9630 E 2,580,574.9181  
 $C.C. \text{ N } 1,788,742.1944$  E 2,310,391.0776

Course from PT 220 to PC 230  $358^\circ 26' 59.3831''$  Dist 12,011.0225'



FILE NAME =	USER NAME = fordjd	DESIGNED -	REVISED -	<b>STATE OF ILLINOIS DEPARTMENT OF TRANSPORTATION</b>	<b>IL 251</b>				F.A.S. RTE.	SECTION	COUNTY	TOTAL SHEETS	SHEET NO.
ci:\pw_work\PWIDOT\FORDJD\dms33877\026407-shr-ATB.dgn		DRAWN -	REVISED -		1177	111T	LASALLE	59	22				
PLOT SCALE = 50.0000' / IN.		CHECKED -	REVISED -		CONTRACT NO. 64A07								
PLOT DATE = Wed Dec 24 14:02:29 2008		DATE -	REVISED -		SCALE:	SHEET NO. OF SHEETS	STA. TO STA.	FED. ROAD DIST. NO.	ILLINOIS FED. AID PROJECT				