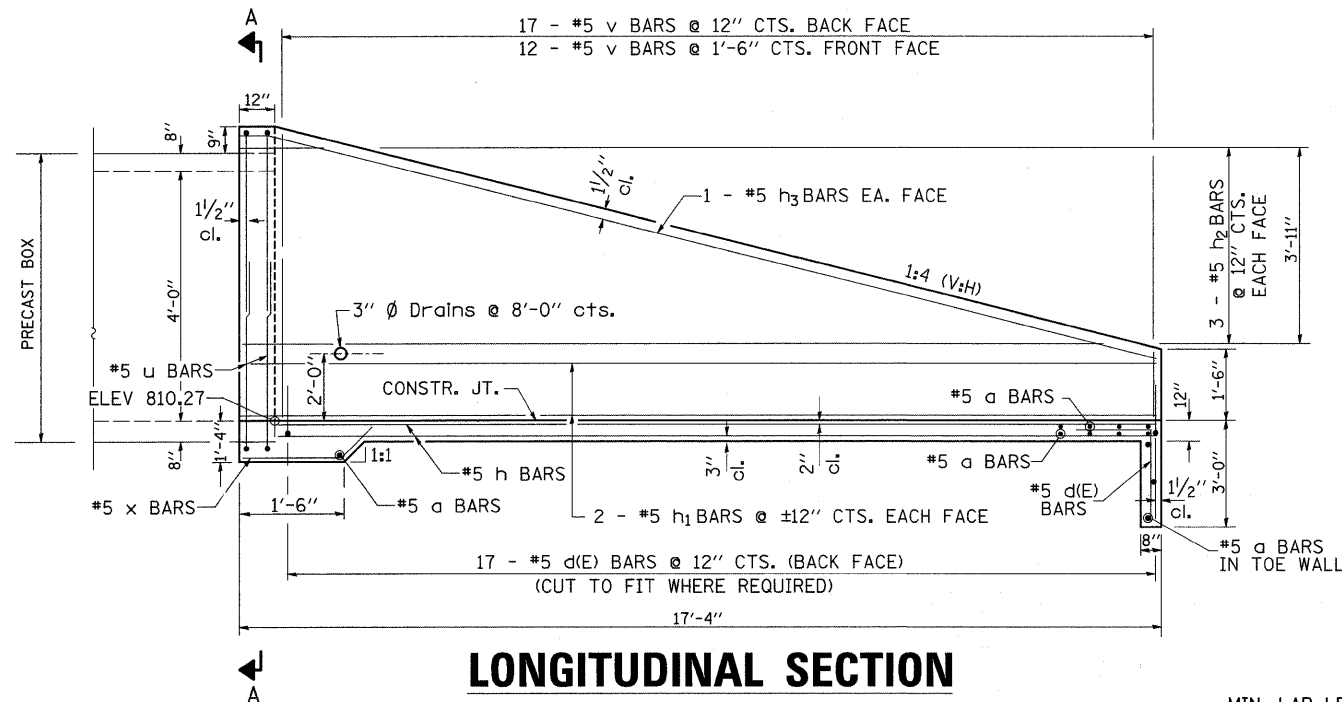
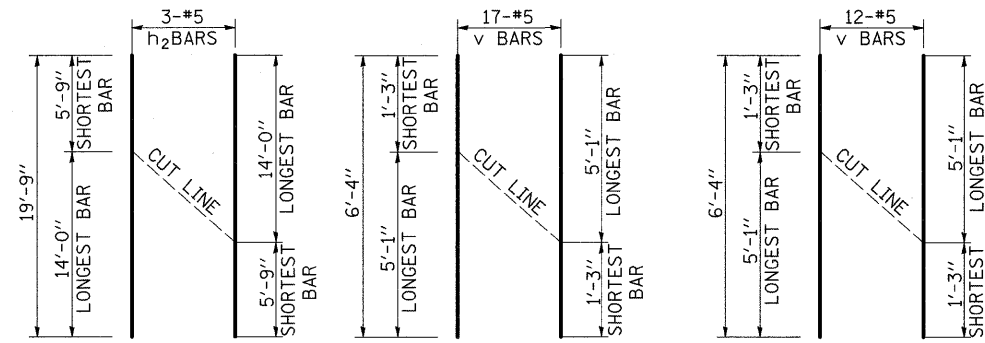
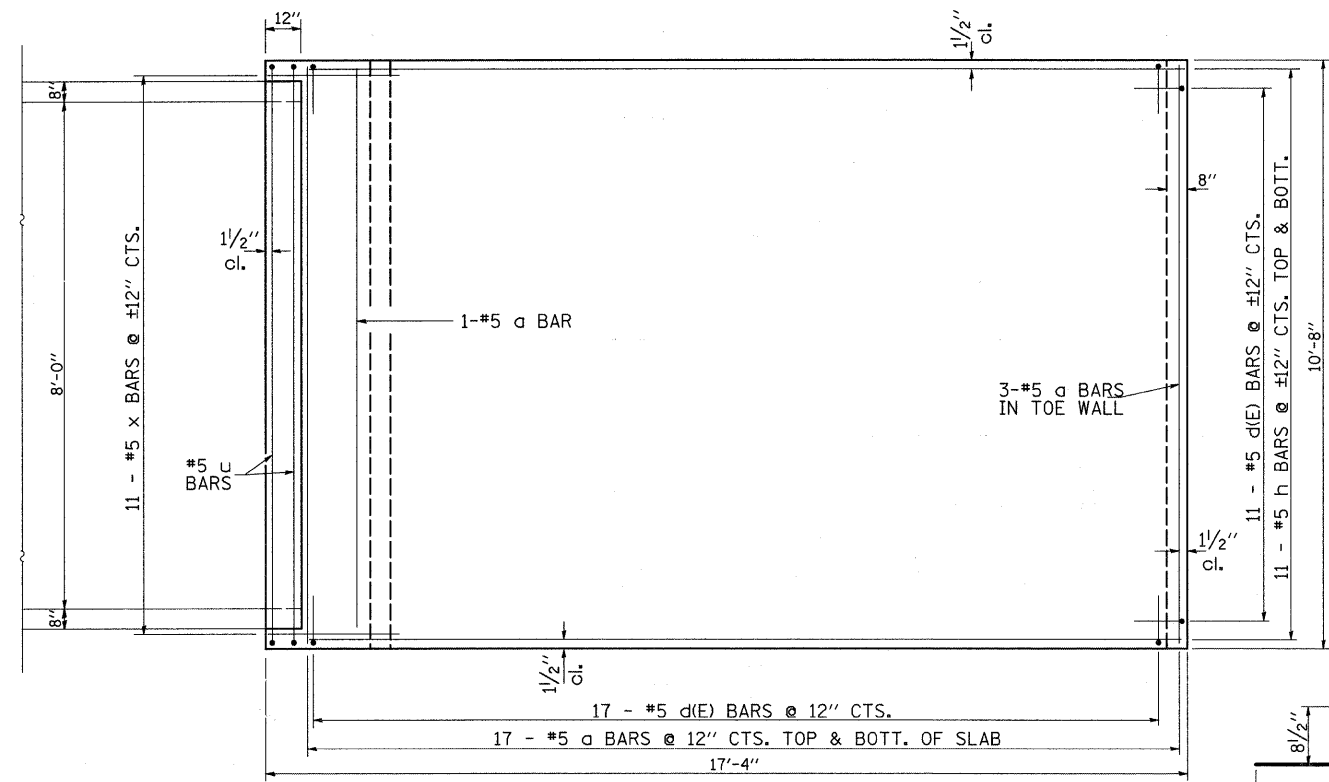


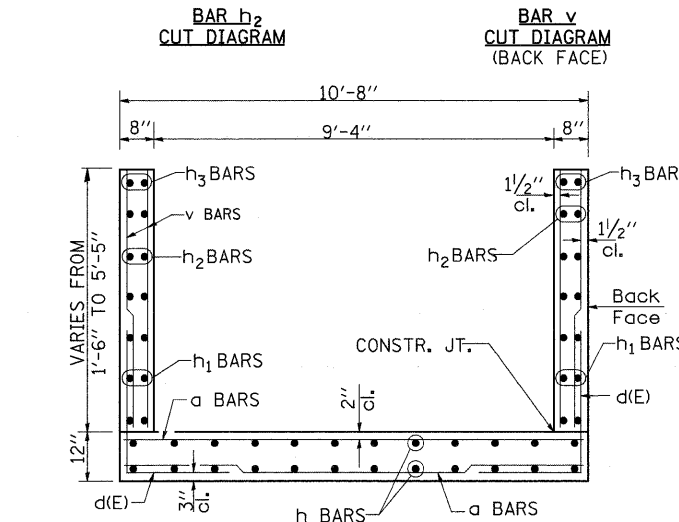
# 8'x4' Precast Single Box Culvert End Section RT. STA. 2472+75 (IL 251)



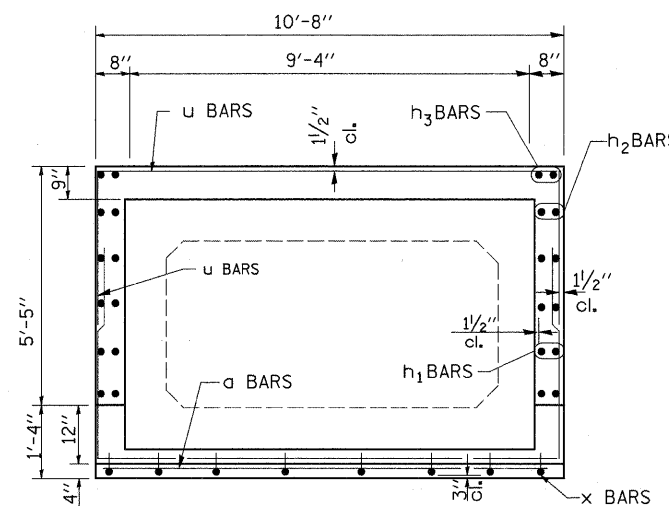
MIN. LAP LENGTH  
#5 = 2'-2"



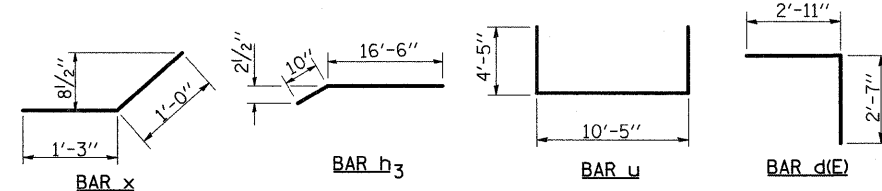
ORDER v & h<sub>2</sub> BARS FULL LENGTH.  
CUT AS SHOWN AND USE REMAINDER  
OF BARS IN OPPOSITE WALL.



**SECTION THRU END SECTION**

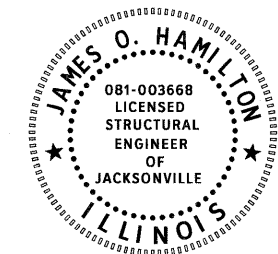


**SECTION A-A**



## BILL OF MATERIALS

BAR	NO.	SIZE	LENGTH	SHAPE
a	38	5	10'-5"	—
d(E)	45	5	5'-6"	└
h	22	5	16'-1"	—
h <sub>1</sub>	8	5	17'-1"	—
h <sub>2</sub>	6	5	19'-9"	—
h <sub>3</sub>	4	5	17'-4"	—
v	29	5	6'-4"	—
u	4	5	19'-3"	└
x	11	5	2'-3"	—
CONCRETE BOX CULVERTS			CU YD	10.9
REINFORCEMENT BARS			LB	1420
REINFORCEMENT BARS EPOXY COATED			LB	260



## GENERAL NOTES:

REINFORCEMENT BARS SHALL CONFORM TO THE REQUIREMENTS OF ASTM A706 GRADE 60. SEE SPECIAL PROVISIONS.

SEE PLAN AND PROFILE SHEET FOR MORE INFORMATION. SEE CROSS SECTION SHEET FOR MORE INFORMATION.

THIS WORK SHALL BE DONE ACCORDING TO THE APPLICABLE PORTION OF 503, 508, AND 540 OF THE STANDARD SPECIFICATIONS. EXPOSED EDGES SHALL BE BEVELED 3/4".

THE COST OF EARTH EXCAVATION, WHERE REQUIRED, AND NECESSARY GRADING TO FIT THE CULVERT END SECTION AS SHOWN IN THE CROSS SECTIONS OR TO THE SLOPE IS INCLUDED IN COST OF "BOX CULVERT END SECTION, CULVERT No. 1."

REINFORCEMENT BARS DESIGNATED (E) SHALL BE EPOXY COATED.

QUANTITIES SHOWN FOR INFORMATION ONLY. COST OF REINFORCEMENT AND CONCRETE INCLUDED WITH BOX CULVERT END SECTION, CULVERT NO. 1.