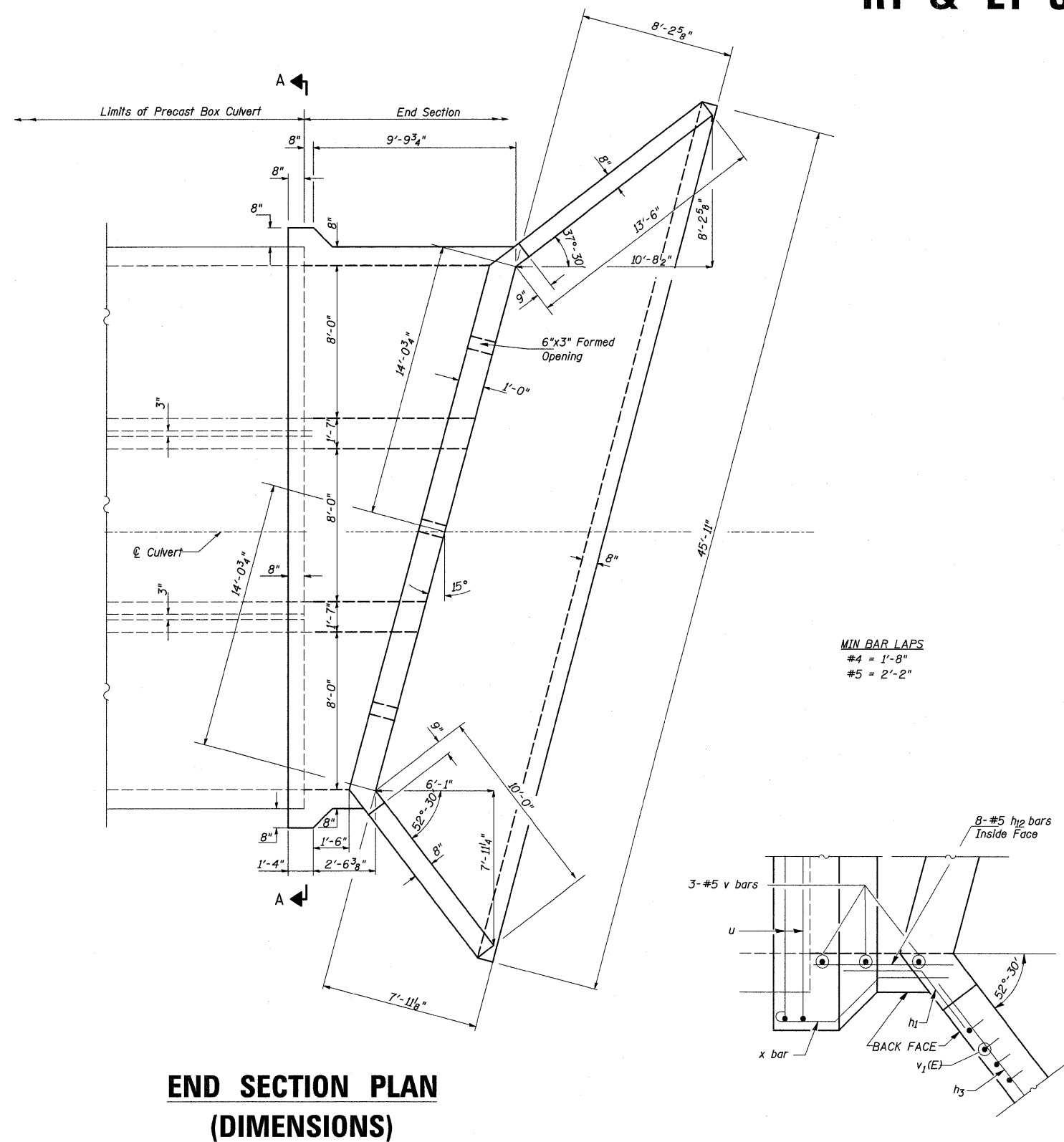


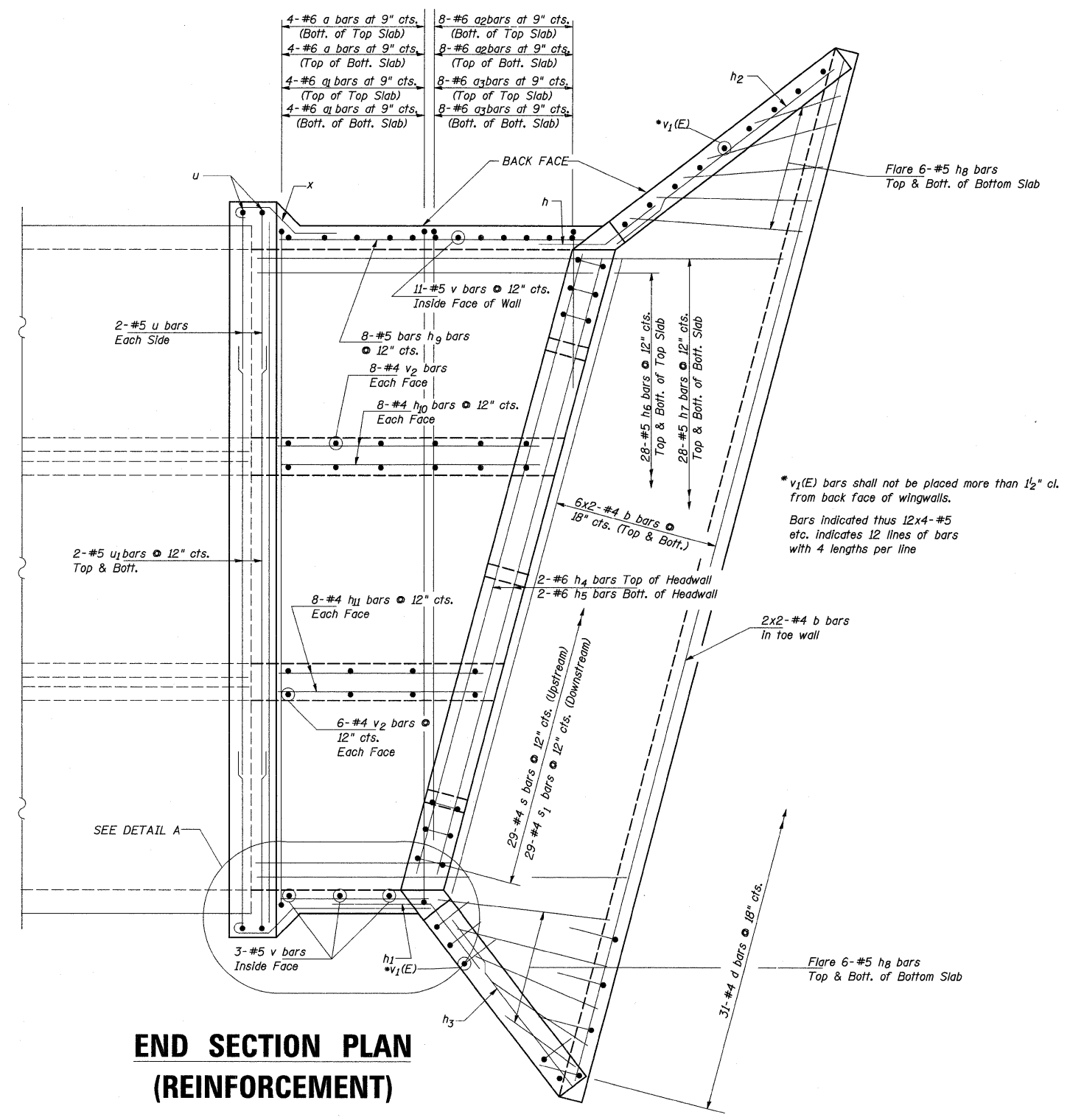
8'x8' Triple Box Culvert End Section RT & LT Station 2520 + 81



**END SECTION PLAN
(DIMENSIONS)**

**CORNER REINFORCEMENT
DETAIL A**

MIN BAR LAPS
#4 = 1'-8"
#5 = 2'-2"



**END SECTION PLAN
(REINFORCEMENT)**

FILE NAME =	USER NAME = fordjd	DESIGNED JOH	REVISED -	STATE OF ILLINOIS DEPARTMENT OF TRANSPORTATION	8' X 8' TRIPLE BOX CULVERT END SECTION DETAIL	F.A.S. RTE.	SECTION	COUNTY	TOTAL SHEETS	SHEET NO.
ct:\pw_work\p\WIDOT\FORDJD\dms33877\0264407culvertdetails.dgn	PLCT SCALE = 53.1746' / IN.	DRAWN TRD	REVISED -			1177	111T	LASALLE	59	30
PLCT DATE = Wed Dec 24 14:24:08 2008	DATE -	CHECKED BAN	REVISED -			CONTRACT NO. 64A07				
		DATE -	REVISED -			SCALE: SHEET NO. 1 OF 2 SHEETS STA. TO STA.		FED. ROAD DIST. NO. ILLINOIS FED. AID PROJECT		