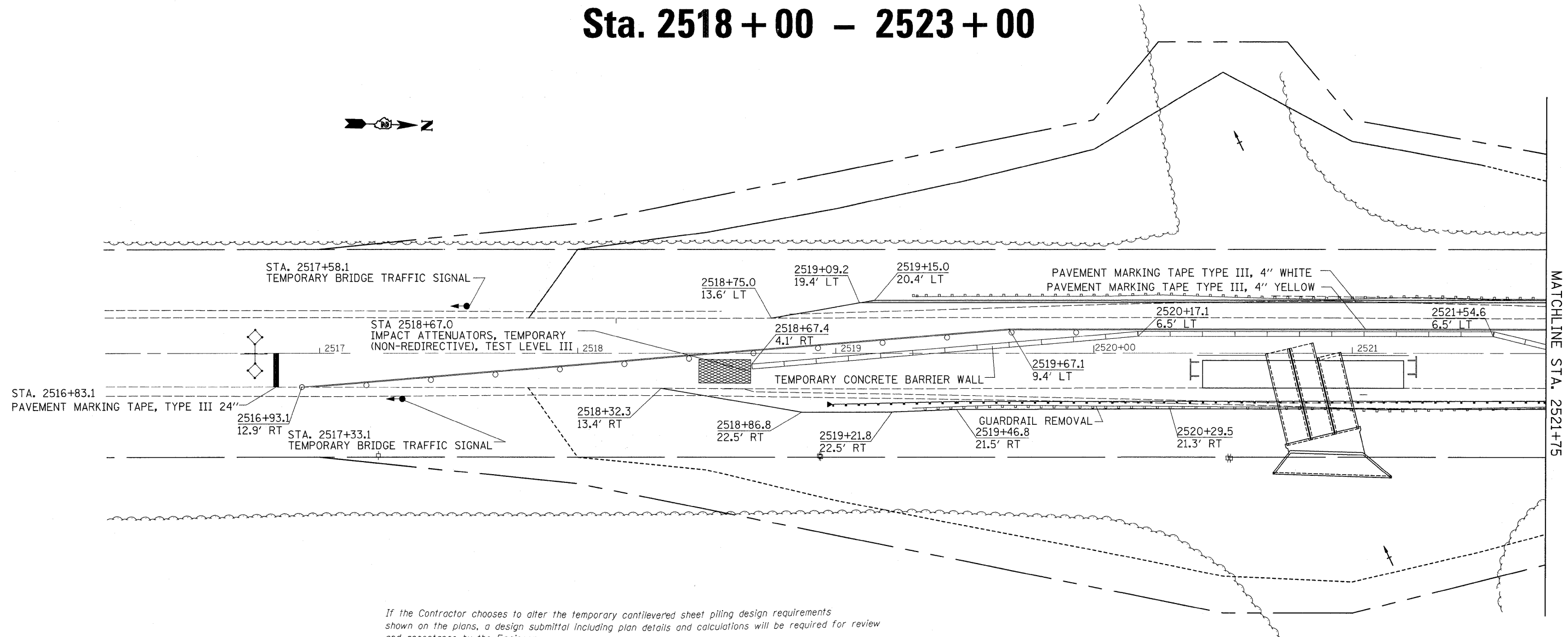


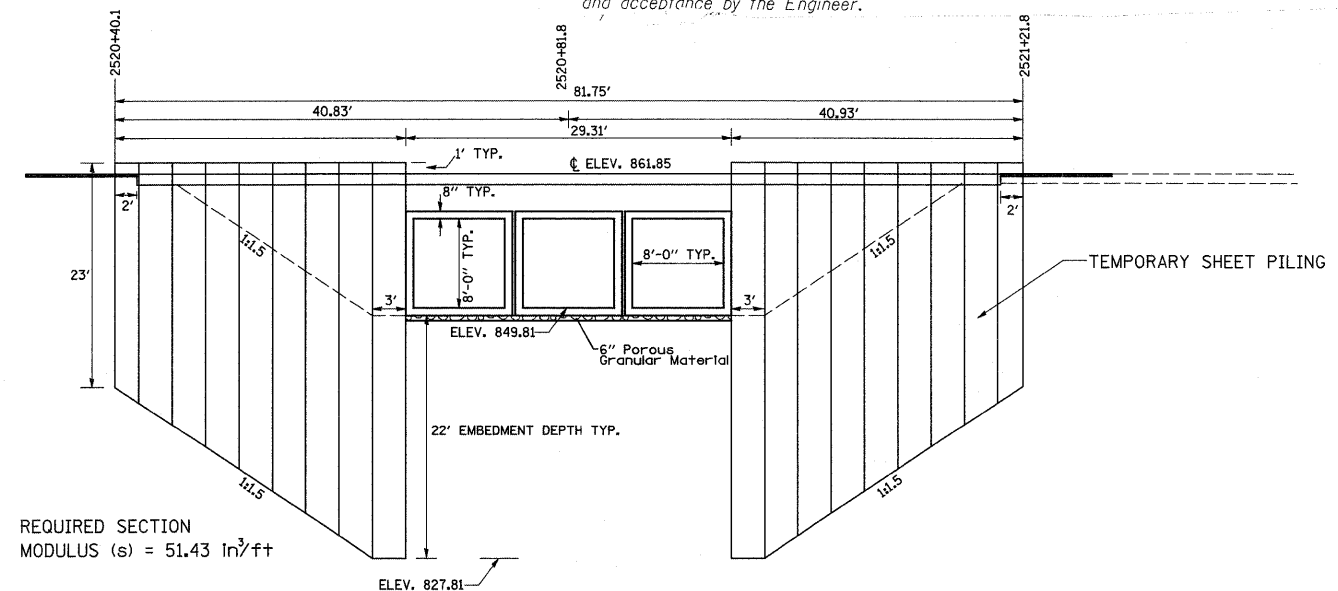
STAGE 1

Sta. 2518 + 00 - 2523 + 00



MATCHLINE STA. 2521+75

If the Contractor chooses to alter the temporary cantilevered sheet piling design requirements shown on the plans, a design submittal including plan details and calculations will be required for review and acceptance by the Engineer.



REQUIRED SECTION
MODULUS (s) = 51.43 in³/ft

FILE NAME =	USER NAME = fordjd	DESIGNED -	REVISED -	STATE OF ILLINOIS DEPARTMENT OF TRANSPORTATION	IL 251	F.A.S. RTE.	SECTION	COUNTY	TOTAL SHEETS	SHEET NO.	
cr\pw_work\pwwdot\fordjd\dms33877\0264407-sht-staging.dgn	07-sht-staging.dgn	DRAWN -	REVISED -			1177	111T	LASALLE	59	32	
PLOT SCALE = 20.0000' / IN.	CHECKED -	REVISED -	REVISED -			CONTRACT NO. 64A07					
PLOT DATE = Wed Dec 24 14:35:13 2008	DATE -	REVISED -	REVISED -			FED. ROAD DIST. NO. ILLINOIS FED. AID PROJECT					