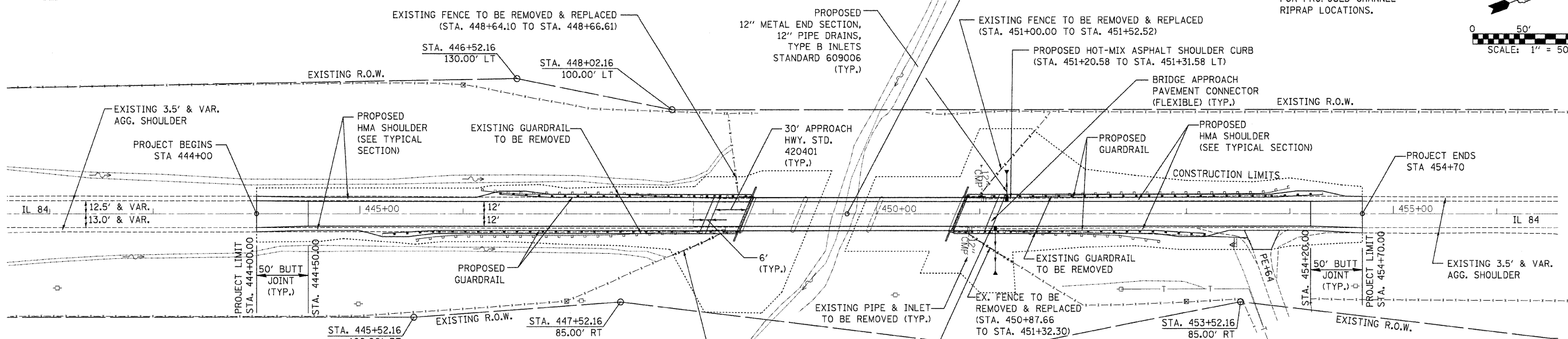
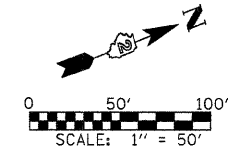


BENCHMARK: BRASS DISK IN TOP OF WEST PARAPET WALL  
ON THE NORTH END OF EXISTING S.N. 043-0037.  
ELEV. = 646.80

SEC. 33, T27N, R1E, 4TH P.M.

NOTE: SEE STRUCTURE GENERAL  
PLAN AND ELEVATION SHEET  
FOR PROPOSED CHANNEL  
RIPRAP LOCATIONS.



WATERWAY INFORMATION TABLE

DRAINAGE AREA		Prop. Low Grade Elevation: 642.27 @ Sta. 452+79.60				
18.6 Sq. Mi.						
Flood Yr.	Q C.F.S.	Opening S.F. Prop.	Nat. H.W.E.	Head - Ft. Prop.	Headwater El. Prop.	
Ten-Year	10	2450	327.0	622.59	0.51	623.10
Design	50	3970	466.0	624.04	0.55	624.59
Base	100	4670	515.0	624.52	0.58	625.10
Max. Calc.	500	6410	620.0	625.53	0.63	626.16

10-YR VELOCITY THROUGH PR. STRUCTURE = 8.82 FPS

EXISTING FENCE TO BE REMOVED & REPLACED  
(STA. 448+02.98 TO STA. 448+52.28)

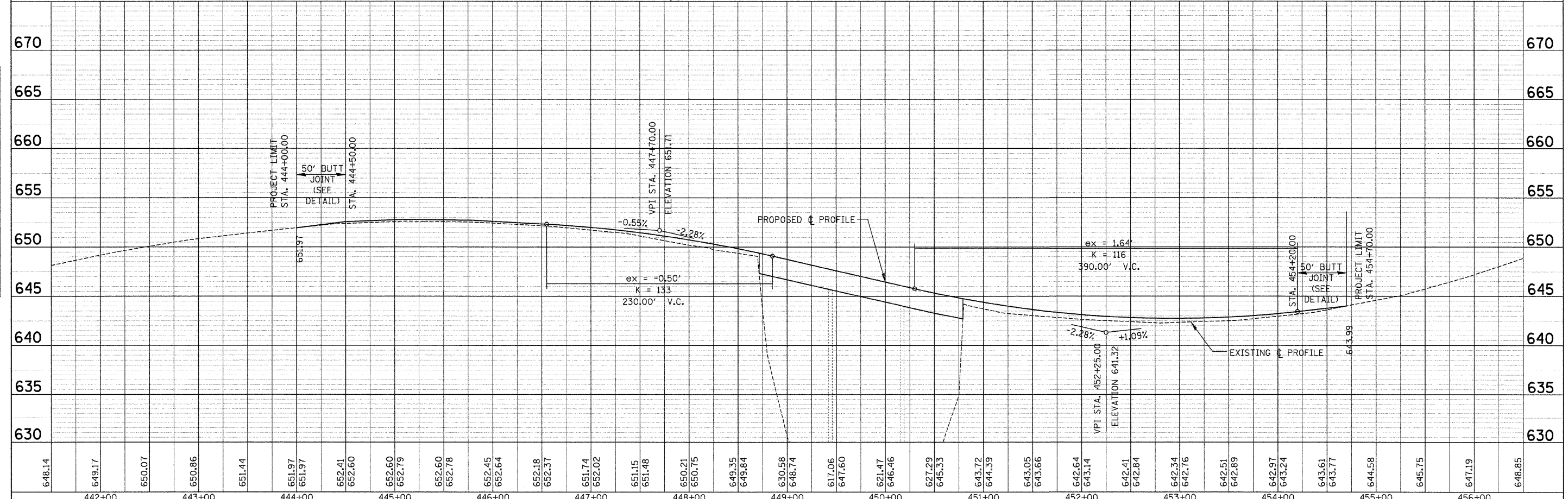
IRISH HOLLOW CREEK

LIMITS OF PROPOSED BUTT JOINT  
STA. 444+00.00 TO STA. 444+50.00  
STA. 454+20.00 TO STA. 454+70.00

PR. STEEL PLATE BEAM GUARD RAIL, TYPE A  
STA. 446+85.09 TO STA. 448+35.09 (LT)  
STA. 451+31.71 TO STA. 453+81.71 (LT)  
STA. 445+71.83 TO STA. 448+21.83 (RT)  
STA. 451+18.45 TO STA. 452+68.45 (RT)

PR. TRAFFIC BARRIER TERMINAL TYPE 1, SPECIAL (FLARED)  
STA. 446+35.09 TO STA. 446+85.09 (LT)  
STA. 453+81.71 TO STA. 454+31.71 (LT)  
STA. 445+21.83 TO STA. 445+71.83 (RT)  
STA. 452+68.45 TO STA. 453+18.45 (RT)

PR. TRAFFIC BARRIER TERMINAL, TYPE 6  
STA. 448+35.09 TO STA. 448+78.84 (LT)  
STA. 450+87.96 TO STA. 451+31.71 (LT)  
STA. 448+21.83 TO STA. 448+65.58 (RT)  
STA. 450+74.70 TO STA. 451+18.45 (RT)



FILE NAME = E:\0824\082606p1r.5\scs01e.dgn	USER NAME = DMM	DESIGNED - DMM	REVISED -	<b>STATE OF ILLINOIS DEPARTMENT OF TRANSPORTATION</b>	<b>PLAN &amp; PROFILE SHEET IL 84 OVER IRISH HOLLOW CREEK</b>	F.A.P. SECTION	COUNTY	TOTAL SHEETS	SHEET NO.	
PLOT SCALE = 1" = 50'	CHECKED - FML	REVISED -	308			(103C-1BR1D)	JO DAVIESS	62	12	
PLOT DATE = 05/20/2008	DATE - 05/2008	REVISED -	CONTRACT NO. 64C03							
						SCALE: 1" = 50'	SHEET NO. OF SHEETS	STA. 444+00 TO STA. 454+70	FED. ROAD DIST. NO. ILLINOIS FED. AID PROJECT	