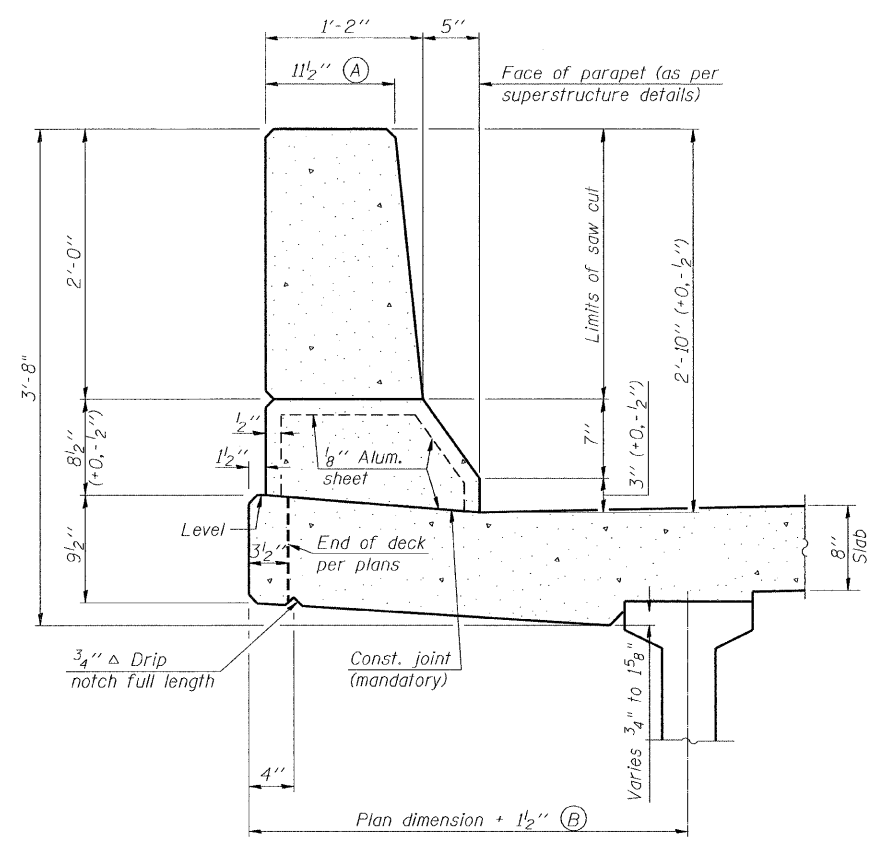


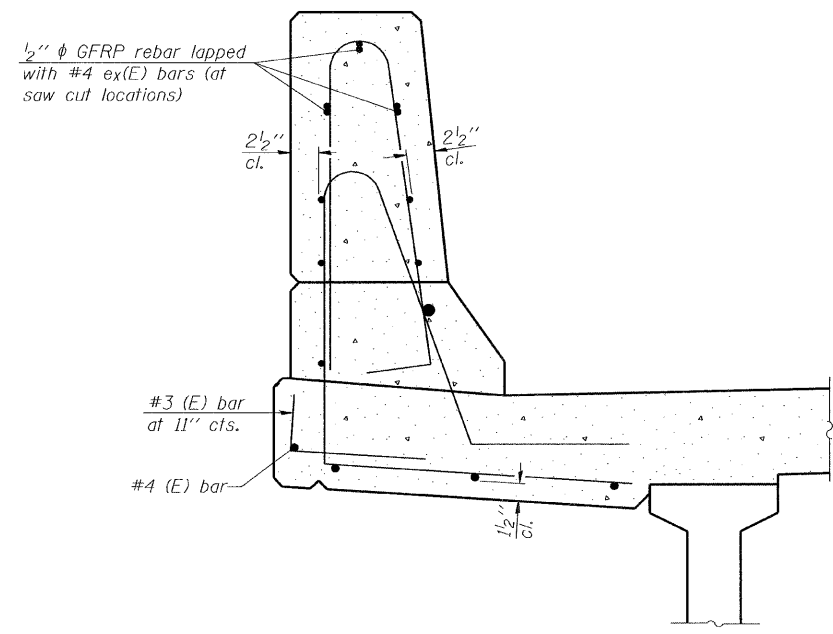
ROUTE NO.	SECTION	COUNTY	TOTAL SHEETS	SHEET NO.
308	103C-1BRD	Jo Daviess	62	36
FED. ROAD DIST.	ILLINOIS	FED. AID PROJECT-		

SHEET NO. 12A OF 26 SHEETS

Contract # 64C03

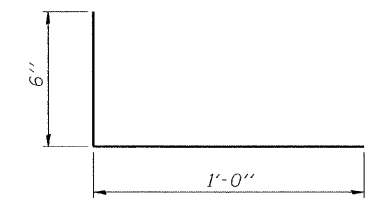


SECTION
(Showing dimensions)

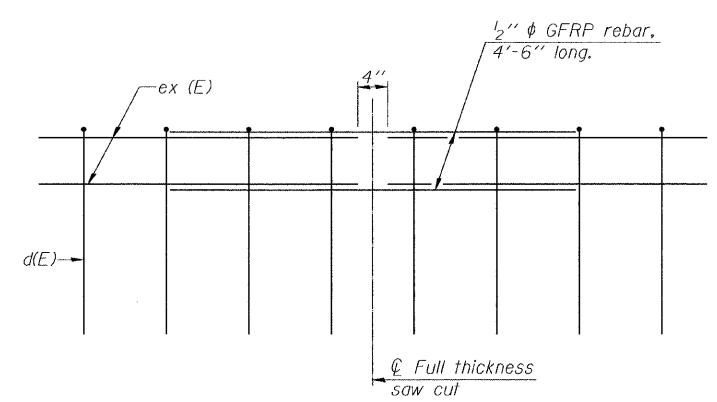


SECTION
(Showing reinforcement clearances for slip forming and additional reinforcement bars)

GENERAL NOTES
All dimensions shall remain the same as shown on contract plans, except dimensions A and B which are to be revised as shown to provide additional clearance. Additional concrete needed to revise dimension A and B= 0.0165 cu. yds./ft. of parapet.
Place aluminum sheet in curb portion at and near piers. Full thickness saw cut at all joint locations in lieu of cork joint filler.



#3 (E) BAR



GFRP REBAR STIFFENING DETAIL
(Place as shown in parapet section at each parapet joint location.)

DESIGNED	J.Z.
CHECKED	S.D.H.
DRAWN	M.S.M.
CHECKED	J.Z.

SFP-34 10-1-08

CONCRETE PARAPET SLIPFORMING OPTION
IL Route 84 over Irish Hollow Creek
F.A.P. RTE 308, SECTION (103C-1BR)D
JO DAVIESS COUNTY
STATION 449+62.06
DATE: 12-11-08 S.N. 043-0037
GRAEF, ANHALT, SCHLOEMER & ASSOCIATES INC
CHICAGO ILLINOIS

c:\p52208\plot\2008-300\00\043-0037-sh12A.dgn 2/2/2008