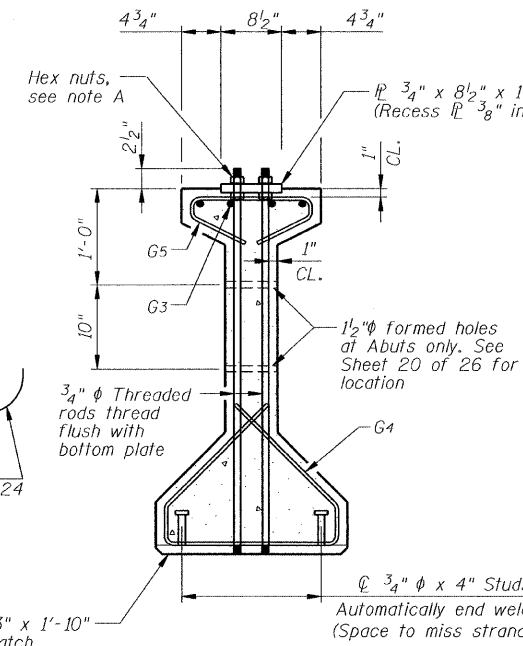


**ELEVATION OF BEAMS 1 THRU 6-SPAN 3**  
(Showing reinforcement & dimensions)

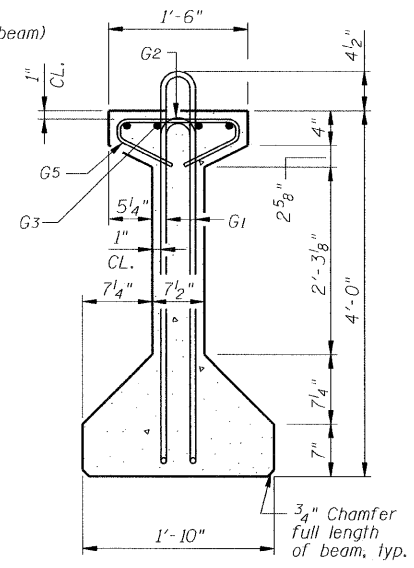
\* 3 Spaces at 3" = 9"  
\*\* 4- 3/4" Threaded dowel rods at 3" cts., each face.

**NOTE A:**  
Hex nuts (top and bottom) with lock washers (top). Only tighten sufficiently to compress lock washers.

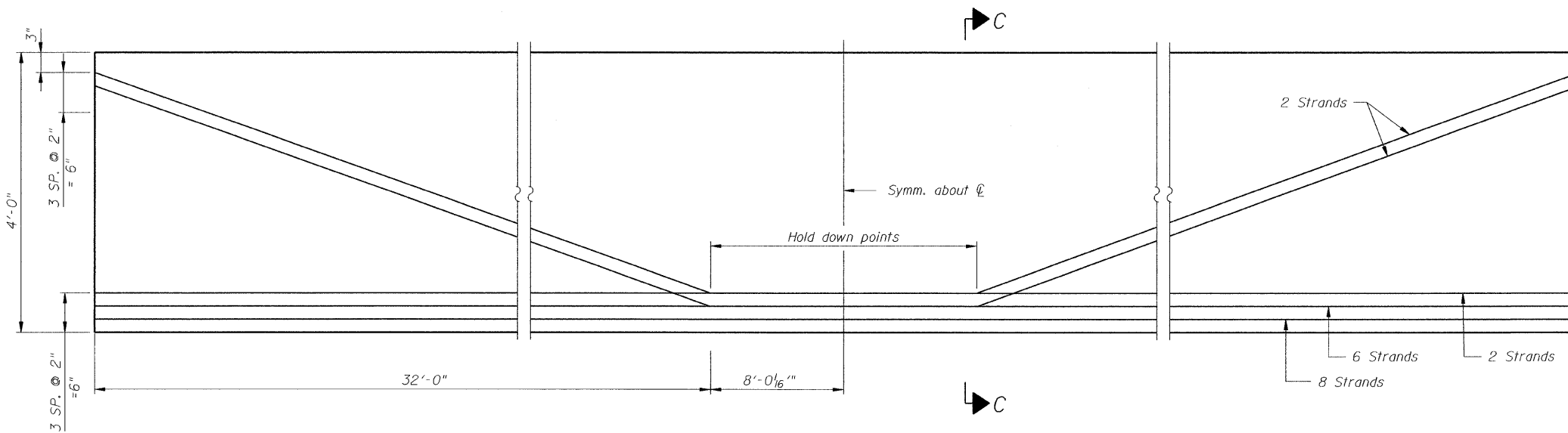
1" x 1'-3" x 1'-10" (Bevel to match chamfer)



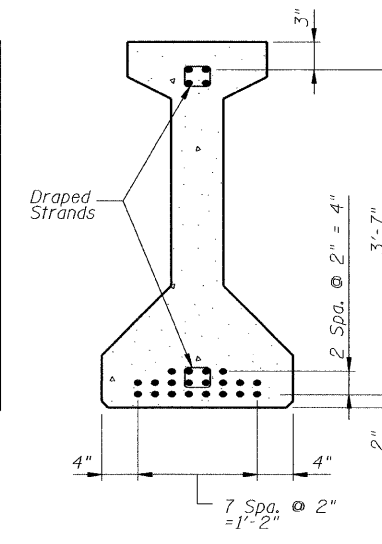
**SECTION A-A**



**SECTION B-B**



**ELEVATION OF BEAM**  
(Showing prestressing steel)



**SECTION C-C**

**BAR LIST**  
**ONE BEAM ONLY**

BAR	NO.	SIZE	LENGTH	SHAPE
G1	125	#4	9'-6"	U
G2	12	#4	7'-11"	U
G3	8	#7	41'-10"	U
G4	38	#3	5'-3"	U
G5	79	#3	2'-8"	U
G6	2	#8	3'-9"	U

**Notes:**  
See sheet 17 of 26 for additional details and bill of material. Required release strength  $f'_{ci}$ , shall be 5,000 Psi.

DESIGNED	J.Z.
CHECKED	J.R.S.
DRAWN	M.S.M.
CHECKED	J.Z.

**BEAM DETAILS, SPAN 3**  
IL Route 84 over Irish Hollow Creek  
F.A.P. RTE 308, SECTION (103C-IBRD)  
JO DAVIESS COUNTY  
STATION 449+62.06  
DATE: 12-11-08 S.N. 043-0037  
GRAEF, ANHALT, SCHLOEMER & ASSOCIATES INC  
CHICAGO ILLINOIS