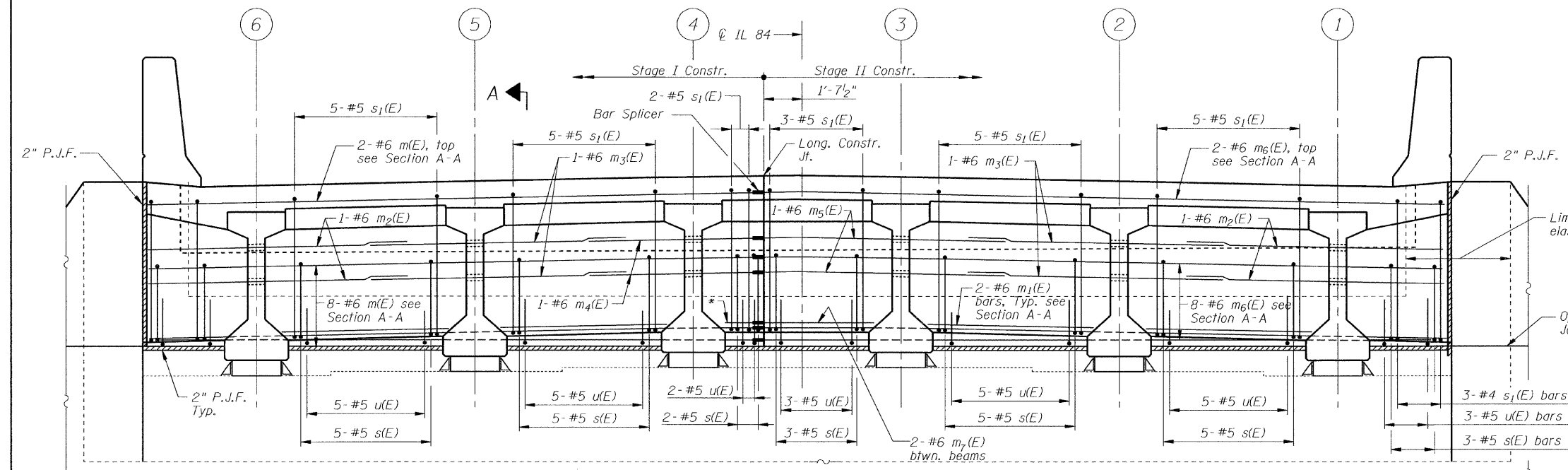
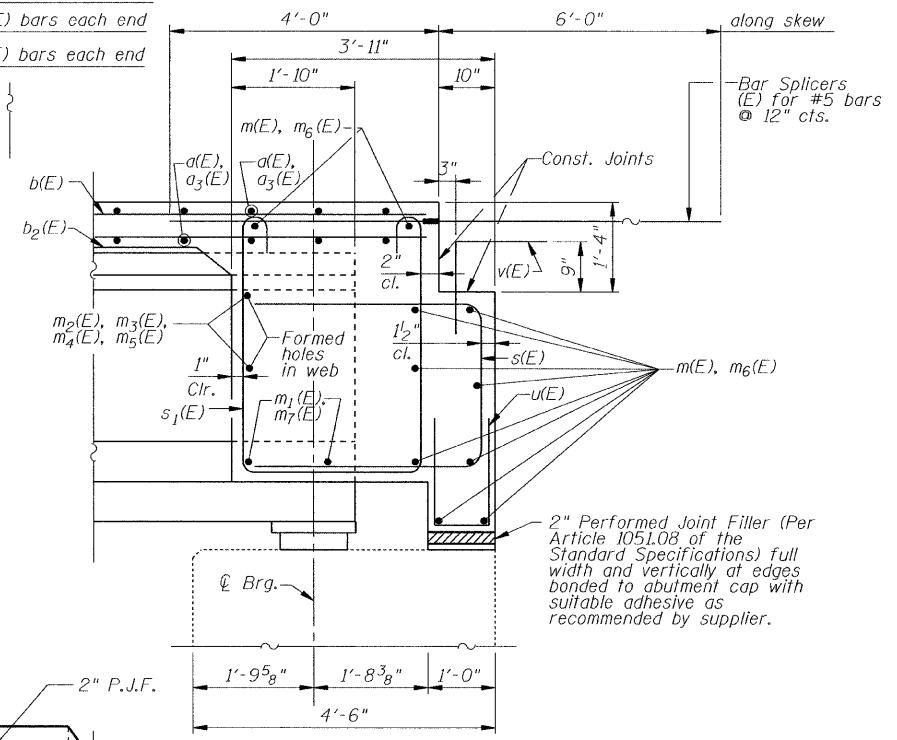


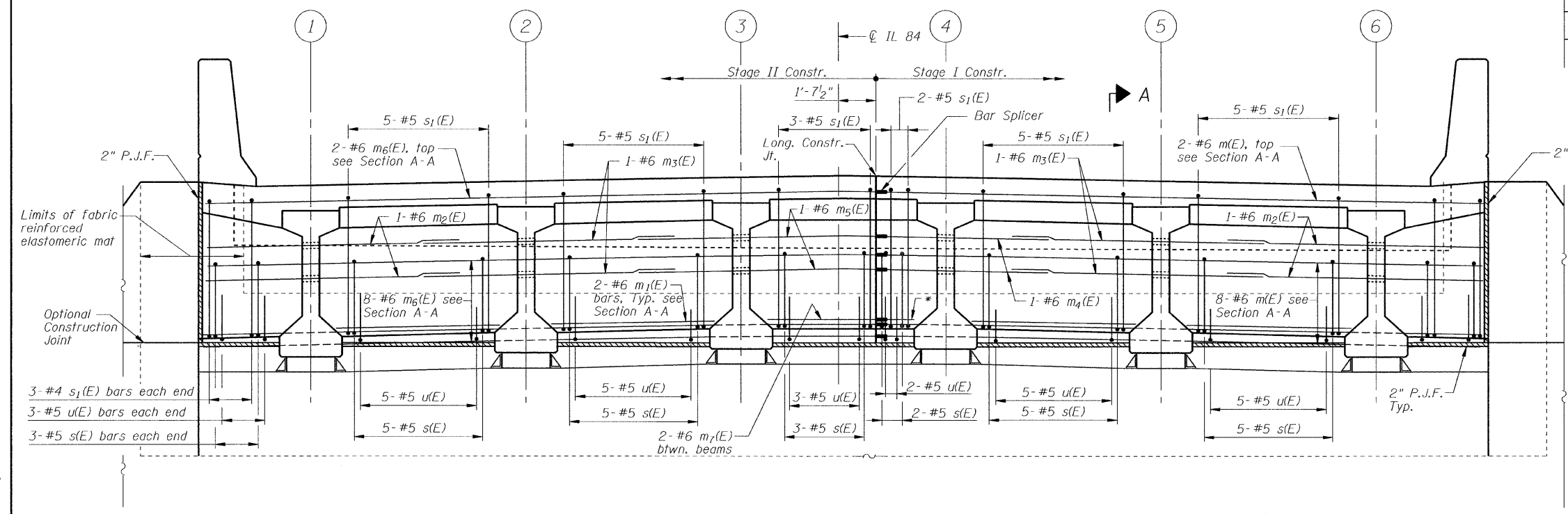
Contract # 64C03



**DIAPHRAGM AT SOUTH ABUTMENT**  
(Looking South)



**SECTION A-A**  
(Dim. at Rt. Ls except as noted)



**DIAPHRAGM AT NORTH ABUTMENT**  
(Looking North)

**NOTES**

1. Concrete and reinforcement bars in diaphragm are included in the Bill of Material on Sheet 12 of 26.
2. For details of bars m(E) thru m<sub>6</sub>(E), s(E) and s<sub>1</sub>(E), see Sheet 12 of 26.
3. The s(E) and s<sub>1</sub>(E) bars shall be placed parallel to the beams. Spacing for these bars shall be at right angles to the beams.
4. For bar splicer details see Sheet 26 of 26.
5. For spacing of v(E) and approach pavement bar splicers, see Sheet 11 of 26.
6. Bar splicers indicated with "\*" may be field cut to fit.

DESIGNED	J.Z.
CHECKED	S.D.H.
DRAWN	M.S.M.
CHECKED	J.Z.

**ABUTMENT DIAPHRAGMS**  
 IL Route 84 over Irish Hollow Creek  
 F.A.P. RTE 308, SECTION (103C-1BR)D  
 JO DAVIESS COUNTY  
 STATION 449+62.06  
 DATE: 12-11-08 S.N. 043-0037  
 GRAEF, ANHALT, SCHLOEMER & ASSOCIATES INC  
 CHICAGO ILLINOIS

C:\p52\008\p52\2008-300\00\043-0037-srh\B.dgn  
 12/12/2008