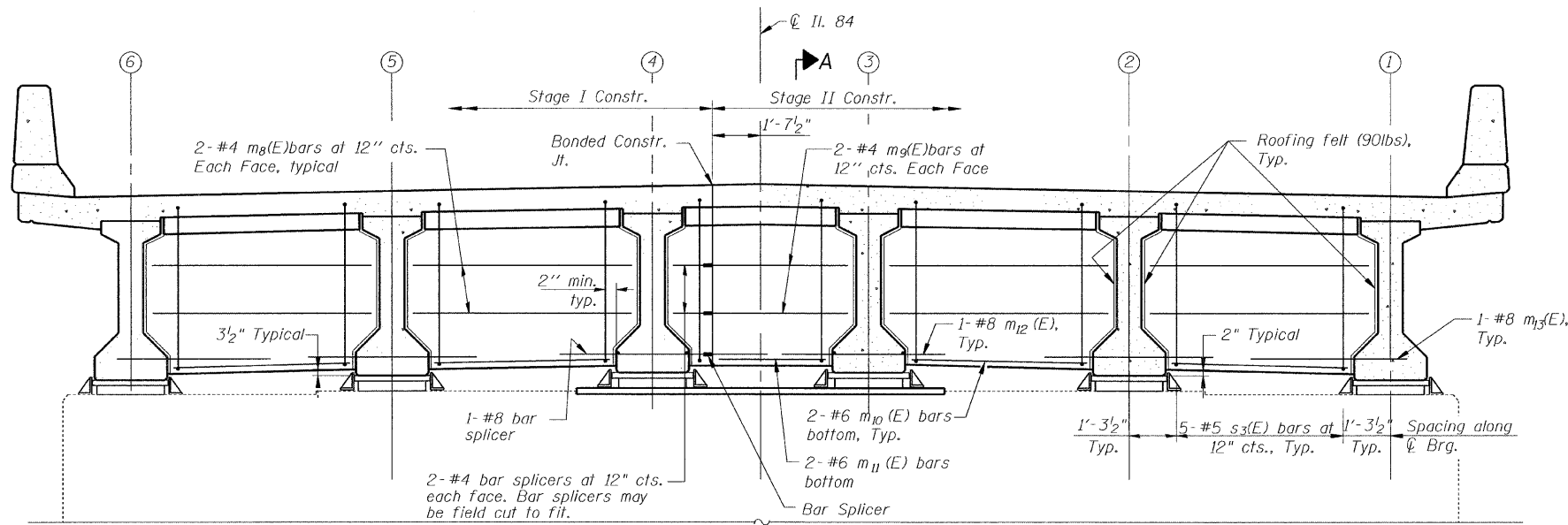
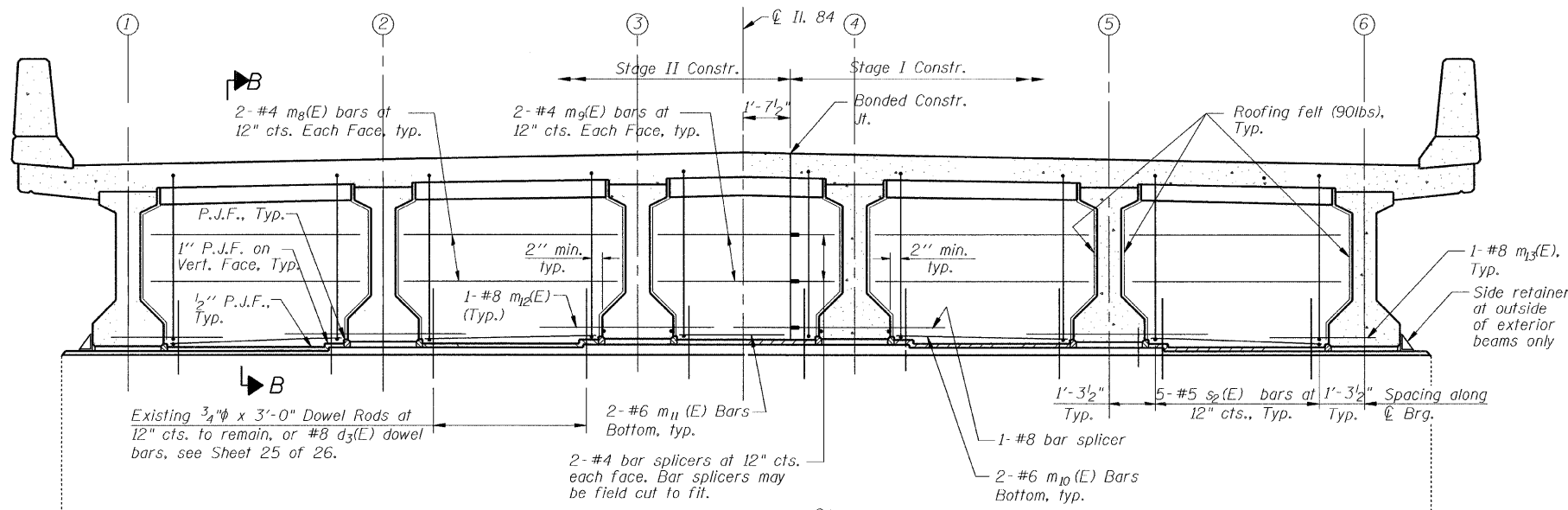


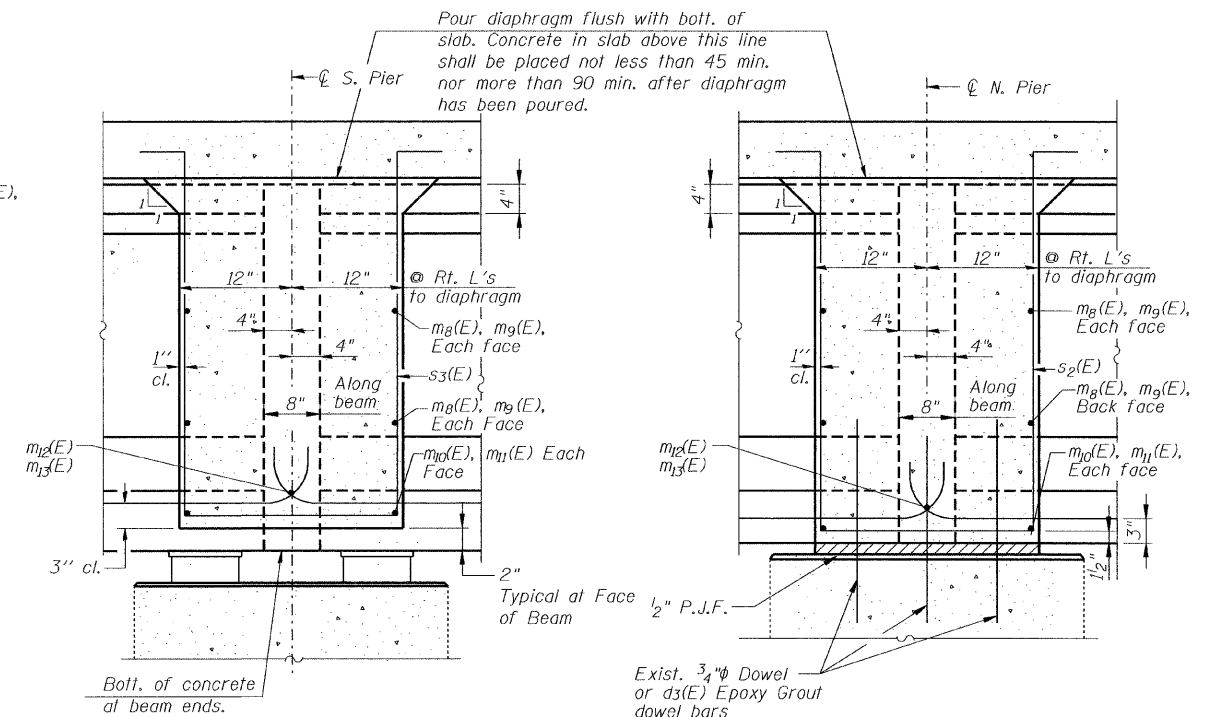
Contract # 64C03



DIAPHRAGM AT SOUTH PIER
(Expansion)
(Looking South)



DIAPHRAGM AT NORTH PIER
(Fixed)
(Looking North)



SECTION A-A AT SOUTH PIER
(Expansion)

SECTION B-B AT NORTH PIER
(Fixed)

NOTES:

- Concrete and reinforcement bars in diaphragm are included in the Bill of Material on Sheet 12 of 26.
- For details of bars $m_8(E)$ thru $m_{10}(E)$, $s_2(E)$, and $s_3(E)$, see Sheet 12 of 26.
- The $s_2(E)$ and $s_3(E)$ bars shall be placed parallel to the beams. Spacing for these bars shall be at right angles to the beams.

DESIGNED	J.Z.
CHECKED	S.D.H.
DRAWN	M.S.M.
CHECKED	J.Z.

PIER DIAPHRAGMS

IL Route 84 over Irish Hollow Creek
F.A.P. RTE 308, SECTION (103C-1BR)D
JO DAVIESS COUNTY
STATION 449+62.06
DATE: 12-11-08 S.N. 043-0037
GRAEF, ANHALT, SCHLOEMER & ASSOCIATES INC
CHICAGO ILLINOIS