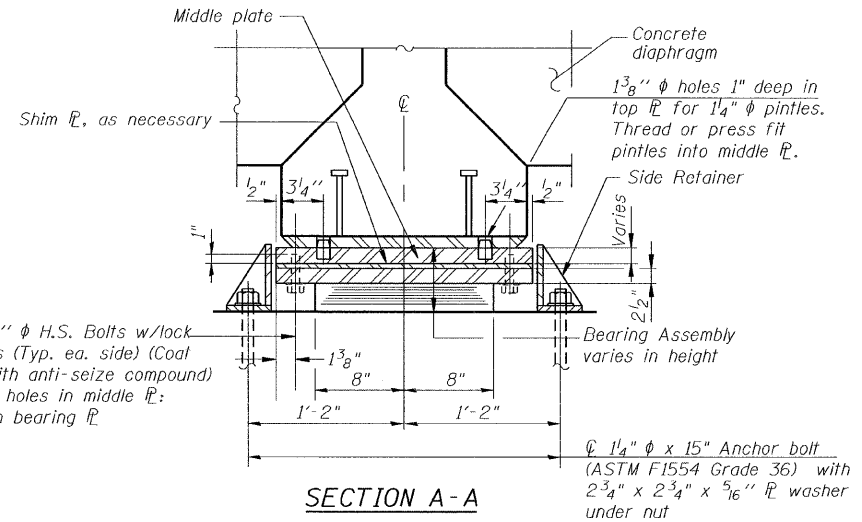
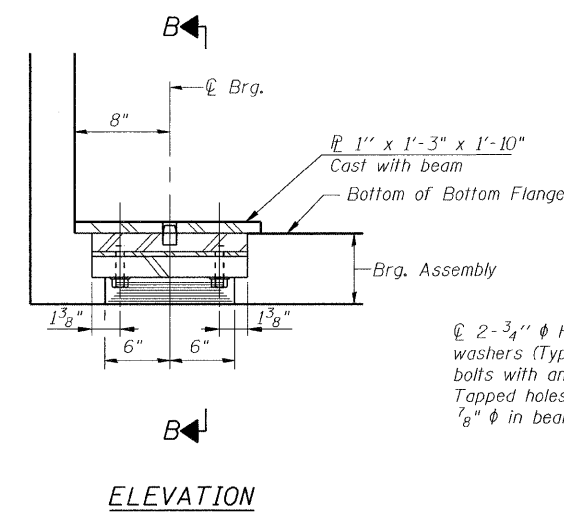


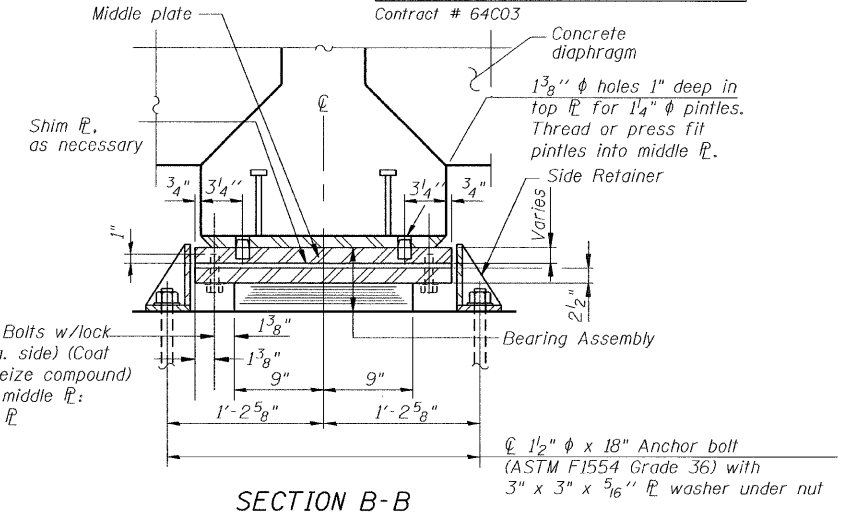
ELEVATION



SECTION A-A



ELEVATION



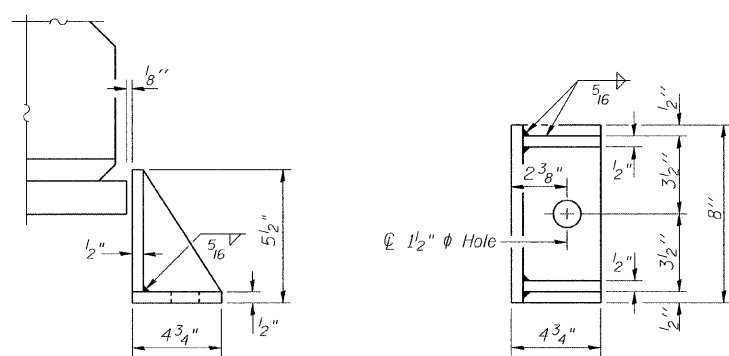
SECTION B-B

**TYPE I ELASTOMERIC EXP. BRG. - SOUTH ABUTMENT & SOUTH PIER**

(6 Required at S. Abut., 12 Required at S. Pier)

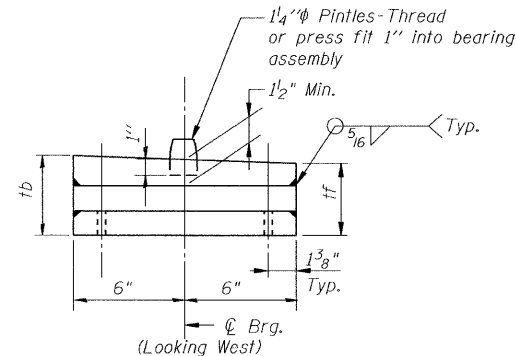
**TYPE I ELASTOMERIC EXP. BRG. - N. ABUT.**

(6 Required at N. Abut.)



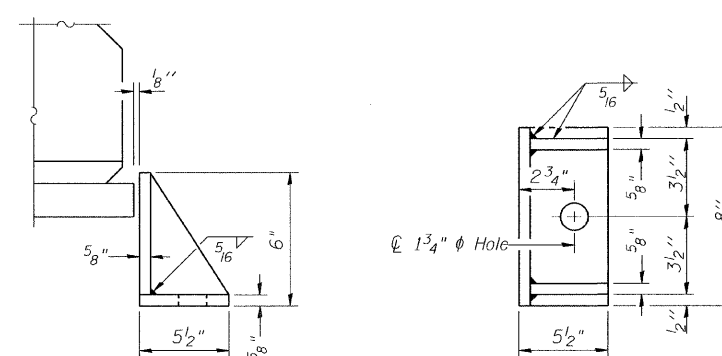
**SIDE RETAINER AT S. ABUT & S. PIER**

(36 required, 12 at S. abut., 24 at S. Pier)  
Equivalent rolled angle with stiffeners will be allowed in lieu of welded plates.  
The side retainers shall be galvanized after shop fabrication according to AASHTO M III or ASTM 385.



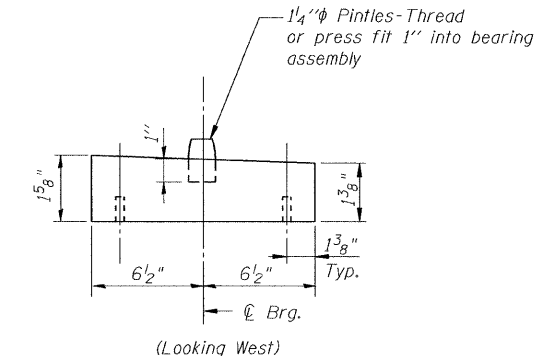
**MIDDLE PLATE AT S. ABUT. & S. PIER**

(Fabricate stacked middle plate from 1" min. thickness of plates)



**SIDE RETAINER AT N. ABUT.**

(16 required, 12 at N. abut., 4 at N. Pier)  
Equivalent rolled angle with stiffeners will be allowed in lieu of welded plates.  
The side retainers shall be galvanized after shop fabrication according to AASHTO M III or ASTM 385.



**MIDDLE PLATE AT N. ABUT.**

(Fabricate middle plate from 1" min. thickness)

**Notes:**

Anchor bolts shall be ASTM F1554 all-thread (or an Engineer-approved alternate material) of the grade(s) and diameter(s) specified. ASTM A307 Grade C anchor bolts may be used in lieu of ASTM F1554 Grade 36 (Fy=36ksi). The corresponding specified grade of AASHTO M314 anchor bolts may be used in lieu of ASTM F1554.

Anchor bolts for side retainers may be cast in place or installed in holes drilled after members are in place.

Drilled and set anchor bolts shall be installed according to Article 521.06 of the Standard Specifications.

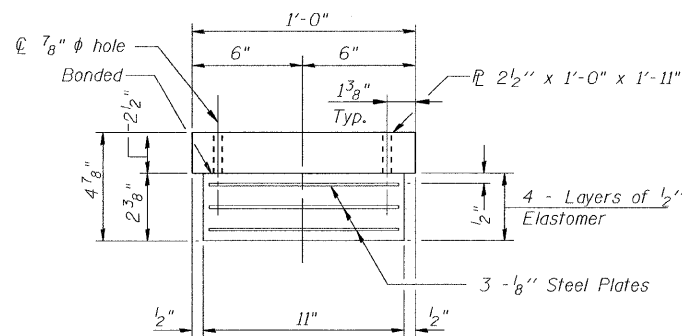
Side retainers and other steel members required for the bearing assembly shall be included in the cost of Elastomeric Bearing Assembly, Type I.

Two 1/8" adjusting shims shall be provided for each bearing in addition to all other plates or shims and placed as shown on bearing details.

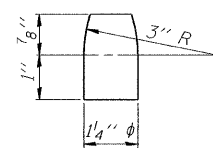
H.S. bolts in bearing assembly shall be galvanized according to AASHTO M298 class 50.

All embedded and separate bearing plates, side retainers, anchor bolts, nuts, washers and pintles shall be galvanized according to AASHTO M111 or M232 (as applicable).

See sheet 16 of 26 for additional details of plate cast with beam.



**BEARING ASSEMBLY AT S. ABUT. & S. PIER**

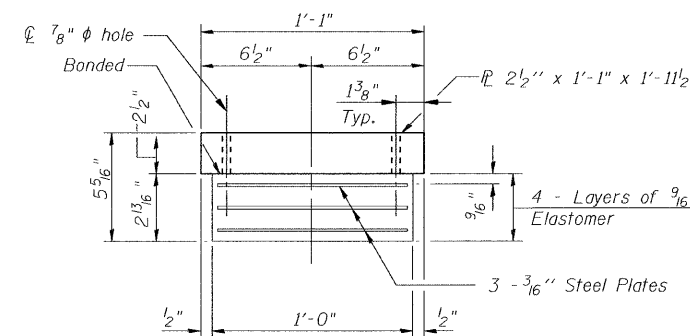


**PINTLE**

(Typical)

**MIDDLE PLATE THICKNESS**

Beam No.	At. S. Abutment		At. S. Pier	
	tb, (IN)	tf, (IN)	tb, (IN)	tf, (IN)
1	3 3/4	3 9/16	1 13/16	1 9/16
2	5 3/4	5 9/16	1 5/8	1 3/8
3	5 3/16	5	1 5/8	1 3/8
4	4 7/16	4 3/16	1 5/8	1 3/8
5	4 3/4	4 1/2	2 5/16	2 1/16
6	3 15/16	3 1/16	1 3/4	1 1/16



**BEARING ASSEMBLY AT N. ABUT.**

DESIGNED	J.Z.
CHECKED	S.D.H.
DRAWN	M.S.M.
CHECKED	J.Z.

**BILL OF MATERIAL**

Item	Unit	Total
Elastomeric Bearing Assembly, Type I	Each	24
Anchor Bolts, 1 1/4"	Each	36
Anchor Bolts, 1 1/2"	Each	16

**BEARING DETAILS**

IL Route 84 over Irish Hollow Creek  
F.A.P. RTE 308, SECTION (103C-1BR)D  
JO DAVIESS COUNTY  
STATION 449+62.06  
DATE: 12-11-08  
S.N. 043-0037  
GRAEF, ANHALT, SCHLOEMER & ASSOCIATES INC  
CHICAGO ILLINOIS