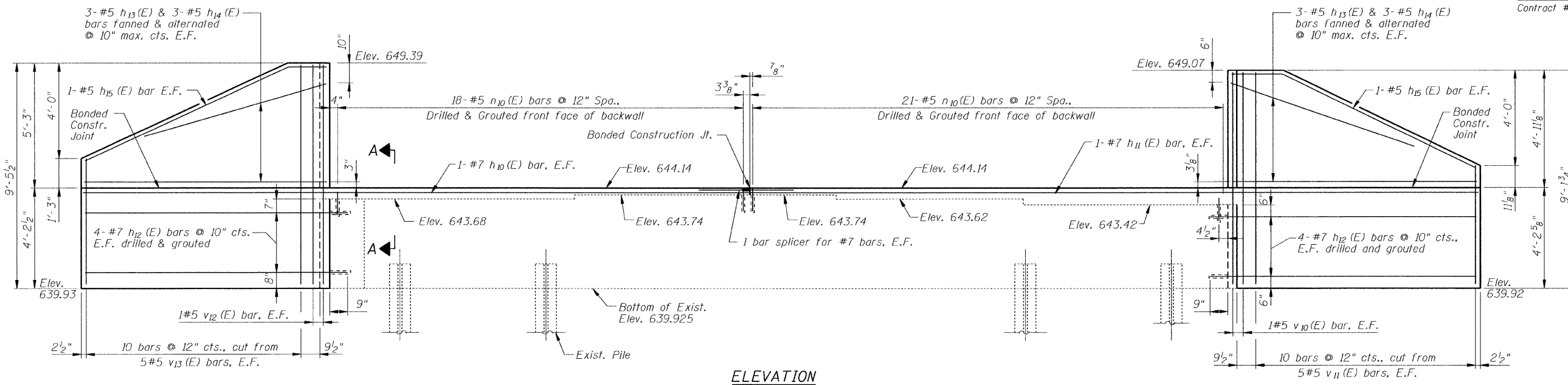
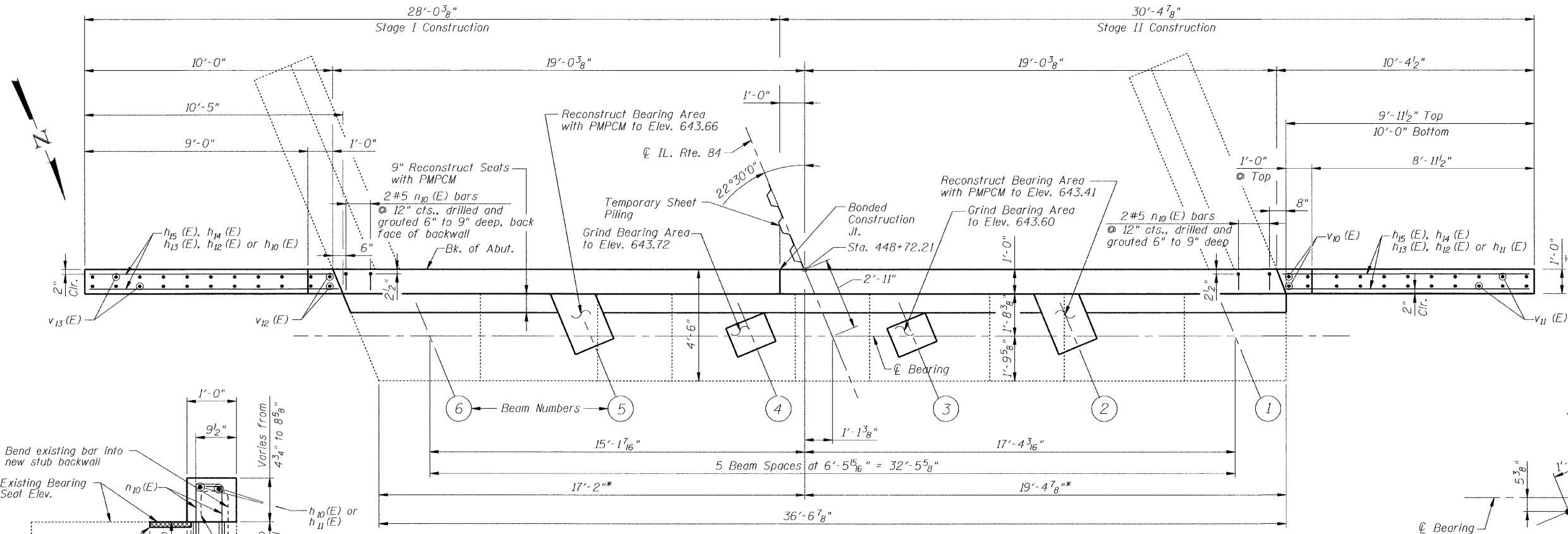


Contract # 64C03

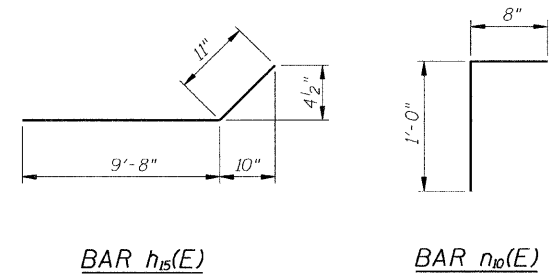
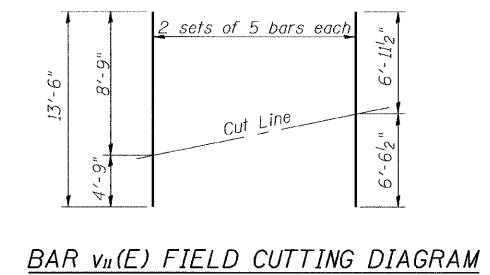
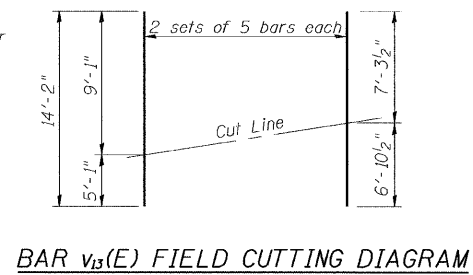
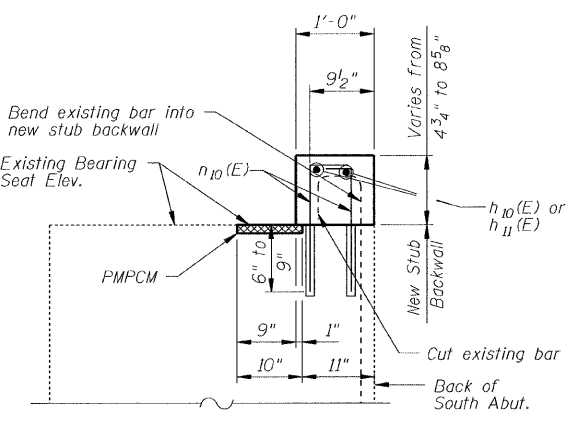
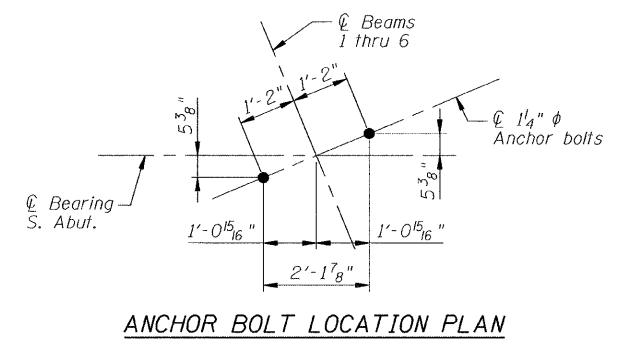


BILL OF MATERIAL

Bar	No.	Size	Length	Shape
h ₁₀ (E)	2	#7	27'-9"	
h ₁₁ (E)	2	#7	30'-1"	
h ₁₂ (E)	16	#7	10'-8"	
h ₁₃ (E)	12	#5	9'-9"	
h ₁₄ (E)	12	#5	7'-6"	
h ₁₅ (E)	4	#5	10'-7"	
n ₁₀ (E)	43	#5	1'-8"	Γ
v ₁₀ (E)	2	#5	8'-9"	
v ₁₁ (E)	10	#5	13'-6"	
v ₁₂ (E)	2	#5	9'-1"	
v ₁₃ (E)	10	#5	14'-2"	
Porous Granular Embankment (Special)		Cu. Yd.	70	
Structure Excavation		Cu. Yd.	72	
Concrete Structures		Cu. Yd.	6.6	
Reinforcement Bars, Epoxy Coated		Pound	1,250	
Geocomposite Wall Drain		Sq. Yd.	50	
Pipe Underdrains for Structures, 4"		Foot	82	
Polymer Modified Portland Cement Mortar		Sq. Ft.	74	



- NOTES:**
- For Bar Splicer details see Sheet 26 of 26.
 - See Sheet 6 of 26 for Temporary Sheet Piling.
 - * Dimensions as indicated are original design dimensions. Reproduced ϕ location may not generate the dimensions shown. These dimensions may need to be adjusted based on reproduced ϕ location.
 - For dimensions and details of Bearing Seat Reconstruction and Grinding, see Section M-M, Detail O, Bearing Seat Grinding Detail Plan, and Bearing Seat Removal Detail Plan on Sheet No. 6 of 26.
 - PMPCM denotes Polymer Modified Portland Cement Mortar.



DESIGNED	J.J.G.
CHECKED	S.D.H.
DRAWN	M.S.M.
CHECKED	J.J.G.

SOUTH ABUTMENT
 IL Route 84 over Irish Hollow Creek
 F.A.P. RTE 308, SECTION (103C-1BR)D
 JO DAVIESS COUNTY
 STATION 449+62.06
 DATE: 12-11-08 S.N. 043-0037
 GRAEF, ANHALT, SCHLOEMER & ASSOCIATES INC
 CHICAGO ILLINOIS

P:\10523008\p101\2008-300\00\043-0037-sht22.dgn
 12/12/2008