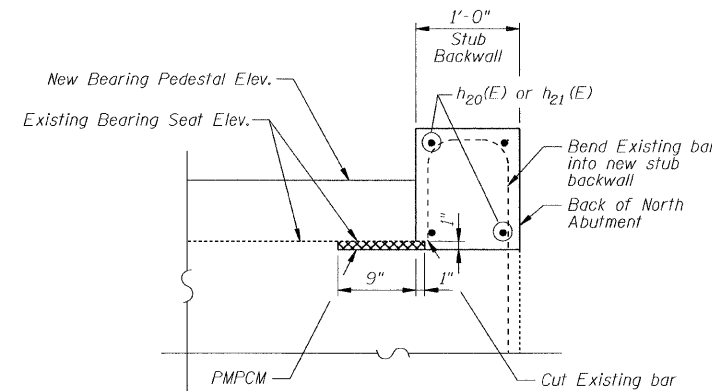
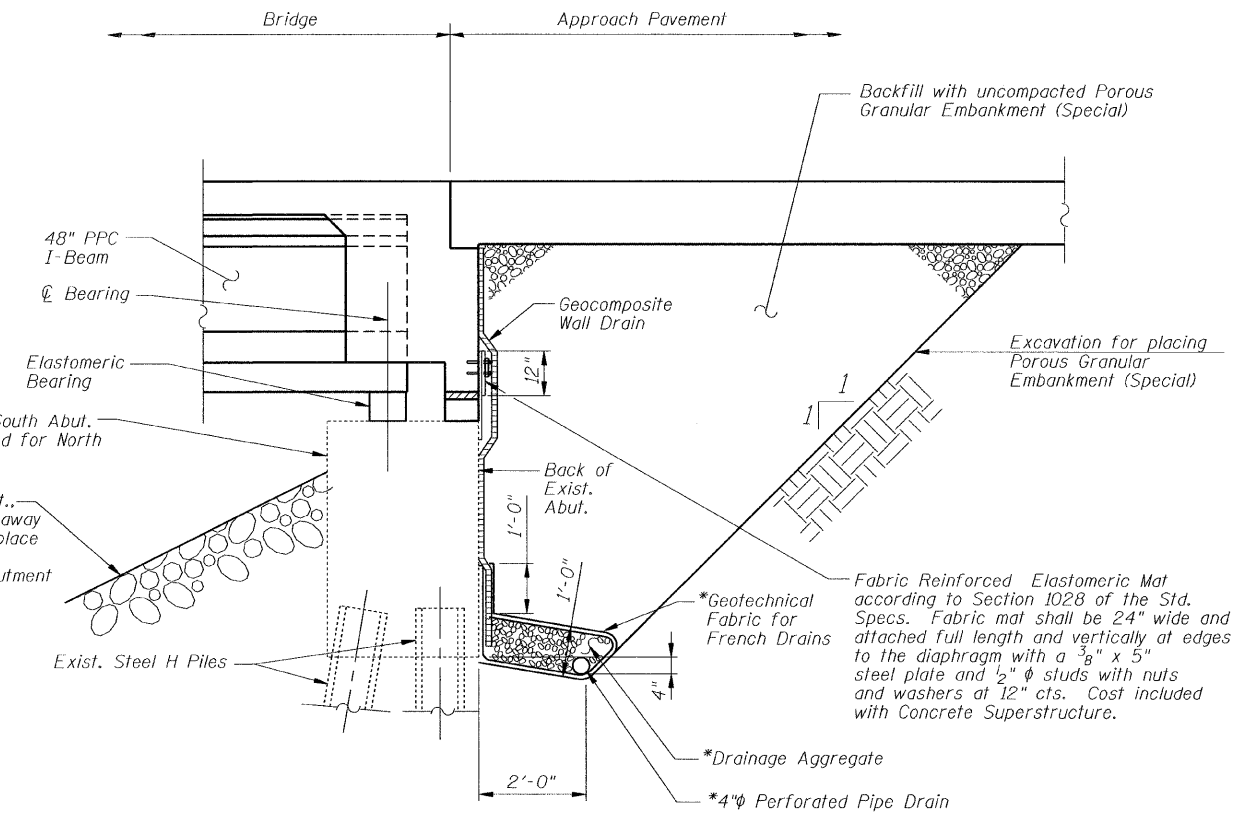


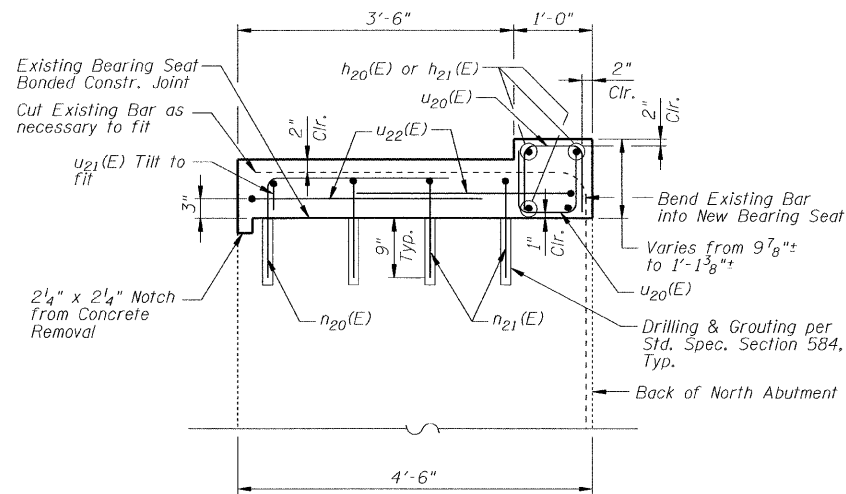
DETAIL T
(PLAN VIEW OF TYPICAL NORTH ABUTMENT PEDESTAL AND PATCH BETWEEN PEDESTALS)



SECTION U-U



SECTION THRU ABUTMENT



SECTION S-S

Exist. Riprap. At S. Abut., exist. riprap has eroded away exposing some piling. Replace exist. riprap as required. See Section at South Abutment on Sheet 2 of 26.

Seat is shown for South Abut. Seat is reconstructed for North Abut.

*Included in the cost of Pipe Underdrains for Structures.

All drainage system components shall extend to 2'-0" from the end of each wingwall except an outlet pipe shall extend until intersecting with the side slopes. The pipes shall drain into concrete headwalls.

NOTES:

1. For location of Detail T and Section S-S, see Sheet 23 of 26.

DESIGNED	J.J.G.
CHECKED	S.D.H.
DRAWN	M.S.M.
CHECKED	J.J.G.

ABUTMENT DETAILS
IL Route 84 over Irish Hollow Creek
F.A.P. RTE 308, SECTION (103C-IBRD)
JO DAVIESS COUNTY
STATION 449+62.06
DATE: 12-11-08 S.N. 043-0037
GRAEF, ANHALT, SCHLOEMER & ASSOCIATES INC
CHICAGO ILLINOIS