

SUMMARY OF QUANTITIES

CONTRACT NO. 64D24

F.A.I. RTE.	SECTION	COUNTY	TOTAL SHEETS	SHEET NO.
88	*	**	64	4
STA.		TO STA.		
FED. AID PROJECT ILLINOIS		FED. ROAD DIST. NO.		
• BRIDGE DECK REPAIRS 2007-1 •• ROCK ISLAND & WHITESIDE				

← ROCK ISLAND → ← WHITESIDE →

PAY ITEM NUMBER	PAY ITEM DESCRIPTION	UNIT	TOTAL QUANTITY	S.N. 081-0126		S.N. 081-0132		S.N. 098-0058		S.N. 098-0066	
				90% FEDERAL 10% STATE X2 31-2A 286TH ST	100% ROCK ISLAND COUNTY X2 31-2A 286TH ST	90% FEDERAL 10% STATE X2 31-2A 317TH ST	100% ROCK ISLAND COUNTY X2 31-2A 317TH ST	90% FEDERAL 10% STATE X2 31-2A WILMOT RD	100% FENTON TOWNSHIP X2 31-2A WILMOT RD	90% FEDERAL 10% STATE X2 31-2A LYNDON RD	100% WHITESIDE COUNTY X2 31-2A LYNDON RD
28100107	STONE RIPRAP, CLASS A4	SQ. YD.	380	96		115		98		71	
28200200	FILTER FABRIC	SQ. YD.	380	96		115		98		71	
40603310	HOT-MIX ASPHALT SURFACE COURSE, MIX "C", N50	TON	324	53	23	64	26	63	14	69	12
42001300	PROTECTIVE COAT	SQ. YD.	94			25		35		34	
44004250	PAVED SHOULDER REMOVAL	SQ. YD.	91			25		30		36	
44000915	HOT-MIX ASPHALT SURFACE REMOVAL (DECK)	SQ. YD.	2822	632	149	766	178	748	149		
44001114	HOT-MIX ASPHALT SURFACE REMOVAL (ASBESTOS)	SQ. YD.	951							827	124
48300400	PORTLAND CEMENT CONCRETE SHOULDERS 9"	SQ. YD.	93			24		35		34	
50102400	CONCRETE REMOVAL	CU. YD.	32.1	6.6		9.1		8.3		8.1	
50157300	PROTECTIVE SHIELD	SQ. YD.	1101	243		286		273		299	
50300255	CONCRETE SUPERSTRUCTURE	CU. YD.	35.8	7.0		9.9		9.6		9.3	
50300300	PROTECTIVE COAT	SQ. YD.	84	16		21		24		23	
50500405	FURNISHING AND ERECTING STRUCTURAL STEEL	POUND	6740	1520		1690		1570		1960	
50500715	JACK AND REMOVE EXISTING BEARINGS	EACH	34	8		8		8		10	
50600600	CLEANING AND PAINTING STEEL BRIDGE NO. 1	L SUM	1	1							
50600700	CLEANING AND PAINTING STEEL BRIDGE NO. 2	L SUM	1			1					
50600800	CLEANING AND PAINTING STEEL BRIDGE NO. 3	L SUM	1					1			
50600900	CLEANING AND PAINTING STEEL BRIDGE NO. 4	L SUM	1							1	
50606401	CONTAINMENT AND DISPOSAL OF LEAD PAINT CLEANING RESIDUES NO. 1	L SUM	1	1							
50606402	CONTAINMENT AND DISPOSAL OF LEAD PAINT CLEANING RESIDUES NO. 2	L SUM	1			1					
50606403	CONTAINMENT AND DISPOSAL OF LEAD PAINT CLEANING RESIDUES NO. 3	L SUM	1					1			
50606404	CONTAINMENT AND DISPOSAL OF LEAD PAINT CLEANING RESIDUES NO. 4	L SUM	1							1	
50800205	REINFORCEMENT BARS, EPOXY COATED	POUND	5210	1,040		1,360		1,420		1,390	
52000110	PREFORMED JOINT STRIP SEAL	FOOT	274	61		72		68		73	
52100010	ELASTOMERIC BEARING ASSEMBLY, TYPE I	EACH	34	8		8		8		10	
52100520	ANCHOR BOLTS, 1"	EACH	136	32		32		32		40	
58100200	WATERPROOFING MEMBRANE SYSTEM	SQ. YD.	3520	622	147	755	175	737	147	816	121
60260100	INLETS TO BE ADJUSTED	EACH	12				4		4		4
67000400	ENGINEER'S FIELD OFFICE, TYPE A	CAL MO	8	2		2		2		2	
67100100	MOBILIZATION	L SUM	1	0.25		0.25		0.25		0.25	
70100207	TRAFFIC CONTROL AND PROTECTION, STANDARD 701402	EACH	8	2		2		2		2	
70100450	TRAFFIC CONTROL AND PROTECTION, STANDARD 701201	L SUM	1	0.25		0.25		0.25		0.25	
70100460	TRAFFIC CONTROL AND PROTECTION, STANDARD 701306	L SUM	1	0.25		0.25		0.25		0.25	
70100700	TRAFFIC CONTROL AND PROTECTION, STANDARD 701406	L SUM	1	0.25		0.25		0.25		0.25	
70300100	SHORT-TERM PAVEMENT MARKING	FOOT	1420	355		355		355		355	
70300520	PAVEMENT MARKING TAPE, TYPE III LINE 4"	FOOT	48664	12,136		12,176		12,168		12,184	
70301000	WORK ZONE PAVEMENT MARKING REMOVAL	SQ. FT.	16,221	4,045		4,059		4,056		4,061	
70400100	TEMPORARY CONCRETE BARRIER	FOOT	486							486	
70400200	RELOCATE TEMPORARY CONCRETE BARRIER	FOOT	3366	948		968		964		486	

• DENOTES SPECIALTY ITEM

△ REVISED 2/18/09

REVISIONS	
NAME	DATE

ILLINOIS DEPARTMENT OF TRANSPORTATION
BRIDGE REHABILITATION
OVER I-88
ROCK ISLAND AND
WHITESIDE COUNTIES
SUMMARY OF QUANTITIES

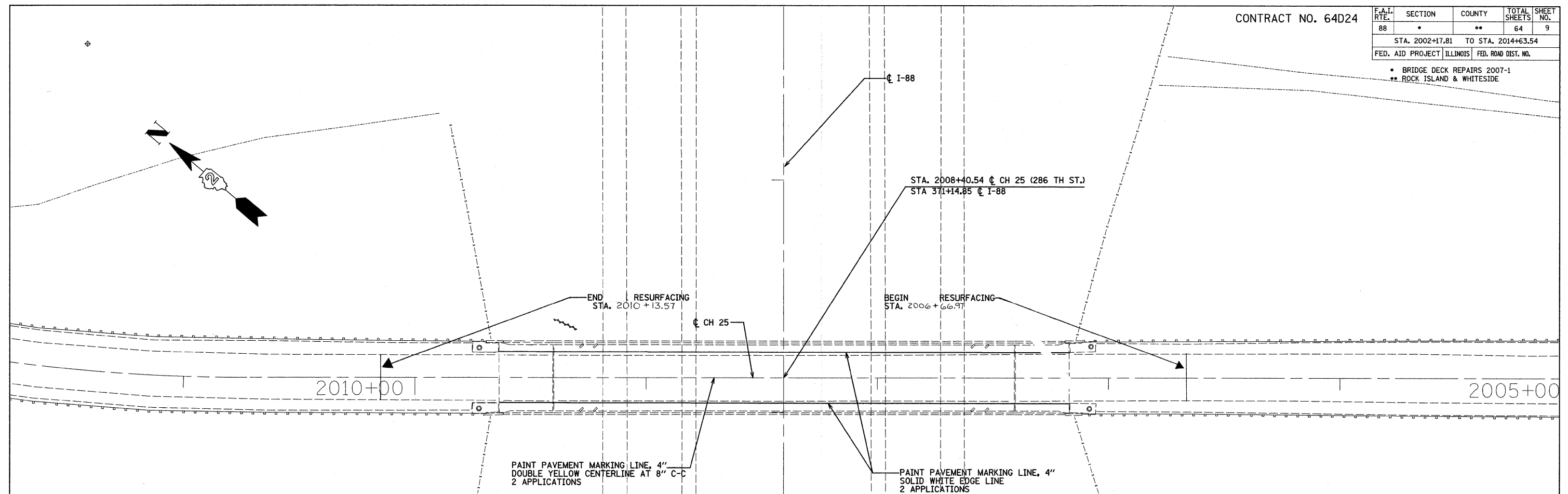
SCALE: NTS DRAWN BY EF
DATE 12/09/08 CHECKED BY RS

\$FILE\$ Sat Jan 10 12:41:18 PM '09

CONTRACT NO. 64D24

F.A.I. RTE.	SECTION	COUNTY	TOTAL SHEETS	SHEET NO.
88	*	**	64	9
STA. 2002+17.81		TO STA. 2014+63.54		
FED. AID PROJECT ILLINOIS		FED. ROAD DIST. NO.		

- BRIDGE DECK REPAIRS 2007-1
- ** ROCK ISLAND & WHITESIDE



PAINT PAVEMENT MARKING LINE, 4"
DOUBLE YELLOW CENTERLINE AT 8" C-C
2 APPLICATIONS

PAINT PAVEMENT MARKING LINE, 4"
SOLID WHITE EDGE LINE
2 APPLICATIONS

#FILE#
SET JUN 10 15:25:58M2009

△ REVISED 2/18/09
SHEET

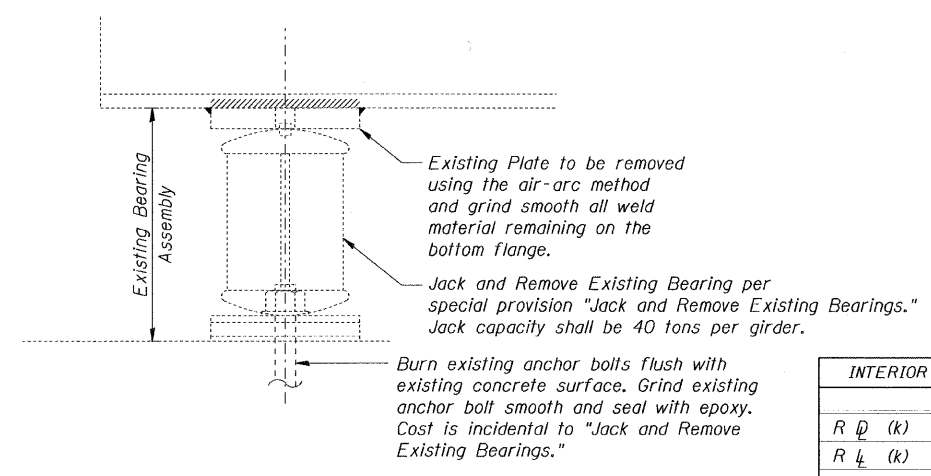
REVISIONS	
NAME	DATE

ILLINOIS DEPARTMENT OF TRANSPORTATION
 CH 25 (286th STREET) BRIDGE OVER I-88
 STRUCTURE NO.: 081-0126
 BRIDGE REHABILITATION

PROPOSED ROADWAY PLAN

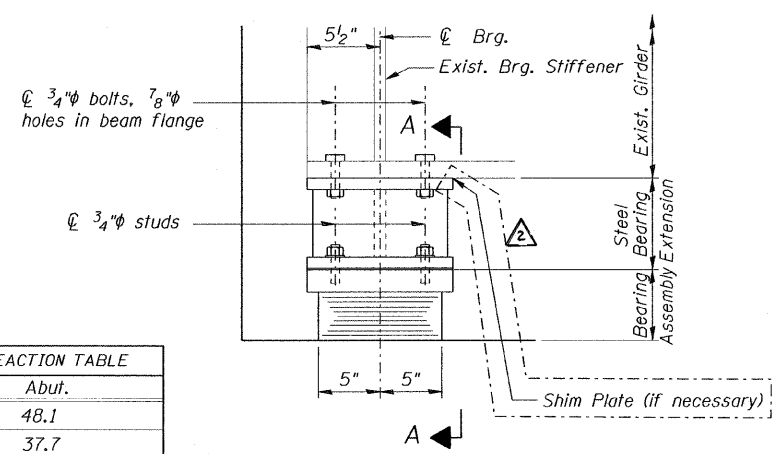
SCALE: 1"=20'
DATE 12/09/08

DRAWN BY EF
CHECKED BY RS

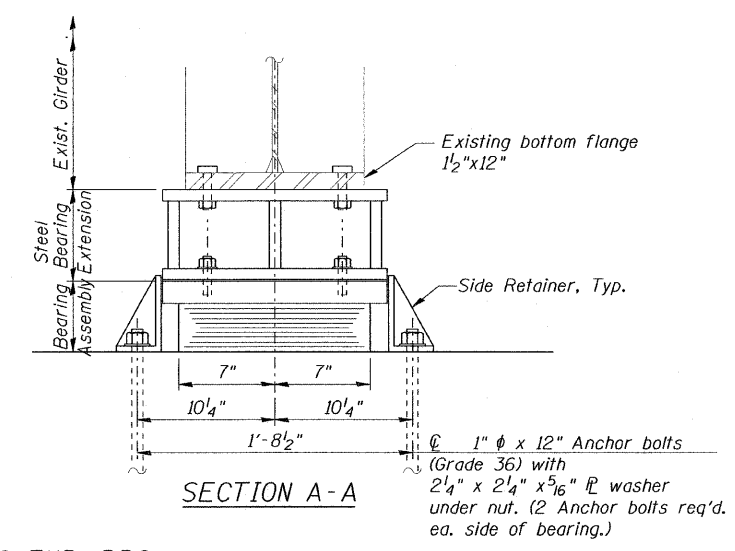


EXISTING BEARING REMOVAL DETAIL

INTERIOR GIRDER REACTION TABLE	
	Abut.
R _D (k)	48.1
R _L (k)	37.7
Imp. (k)	8.4
R _{Total} (k)	94.2

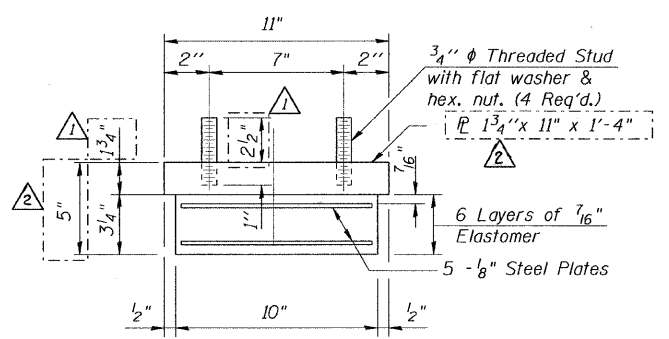


ELEVATION AT ABUT.



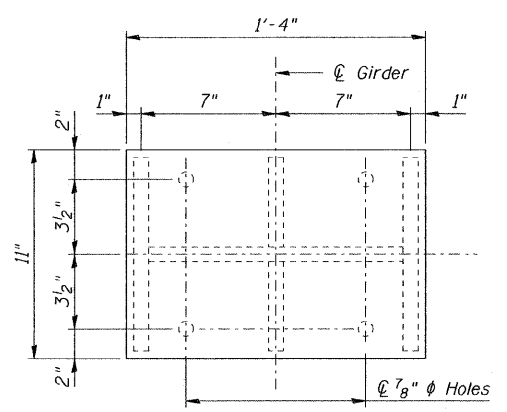
SECTION A-A

TYPE I ELASTOMERIC EXP. BRG.

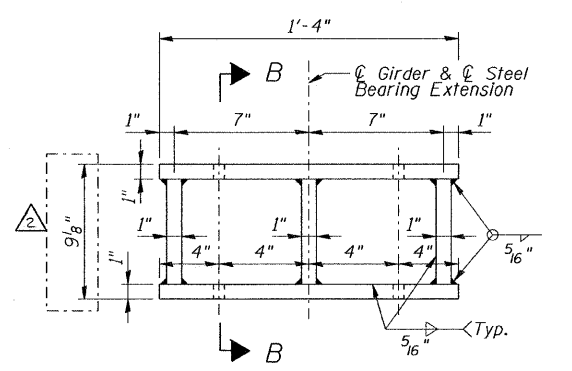


BEARING ASSEMBLY

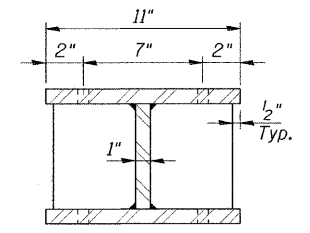
Note: Shim plates shall not be placed under Bearing Assembly.



PLAN STEEL BEARING EXTENSION



ELEVATION STEEL BEARING EXTENSION



SECTION B-B

STEEL BEARING EXTENSION

Notes:
 Anchor bolts shall be ASTM F1554 all-thread (or an Engineer-approved alternate material) of the grade(s) and diameter(s) specified. ASTM A307 Grade C anchor bolts may be used in lieu of ASTM F1554 Grade 36 (Fy=36ksi). The corresponding specified grade of AASHTO M314 anchor bolts may be used in lieu of ASTM F1554.
 Drilled and set anchor bolts shall be installed according to Article 521.06 of the Standard Specifications.
 Side retainers, shall be included in the cost of Elastomeric Bearing Assembly, Type I.
 The structural steel plates of the Bearing Assembly and the Steel Bearing Extension shall conform to the requirements of AASHTO M 270 Grade 36.
 Prior to ordering any material, the Contractor shall verify in the field all bearing height and shim thickness dimensions. Diaphragm removal and reinstallation may be required to facilitate drilling holes. Cost included with Furnishing and Erecting Structural Steel.
 New Steel extensions, shim plates and connection bolts are included with Furnishing and Erecting Structural Steel.

BILL OF MATERIAL

Item	Unit	Total
Jack and Remove Existing Bearings	Each	8
Elastomeric Bearing Assembly, Type I	Each	8
Anchor Bolts, 1"	Each	32
Furnishing and Erecting Structural Steel	Pound	1,520

SIDE RETAINER
 Equivalent rolled angle with stiffeners will be allowed in lieu of welded plates.

DESIGNED	S.D.H.
CHECKED	E.E.J.
DRAWN	M.S.M.
CHECKED	S.D.H.

REVISED
 2-18-09

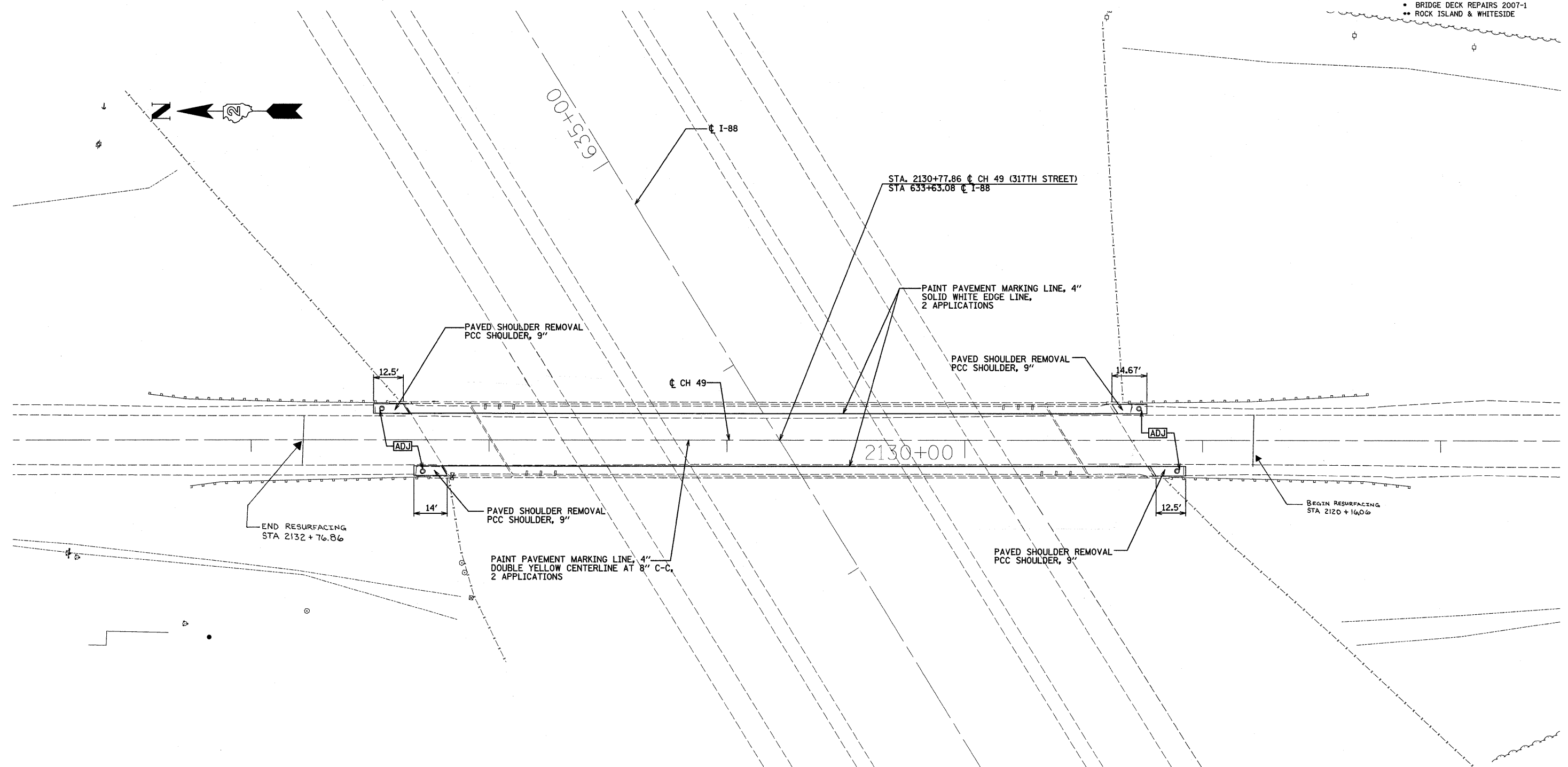
TYPE I ELASTOMERIC BEARING
 C.H. 25 (286th STREET) OVER I-88
 F.A.I. ROUTE 88
 SECTION: BRIDGE DECK REPAIRS 2007-1
 ROCK ISLAND COUNTY
 STATION 2008+40.54
 S.N. 081-0126
 DATE: 12-09-08
 GRAEF, ANHALT, SCHLOEMER & ASSOCIATES INC
 CHICAGO ILLINOIS

n:\jobs\2008\plot\2001-4014-09\081-0126\CH26_50th Ave.\00\081-0126-516.dgn
 2/5/2009

CONTRACT NO. 64D24

F.A.I. RTE.	SECTION	COUNTY	TOTAL SHEETS	SHEET NO.
88	*	**	64	20
STA. 2127+74.02		TO STA. 2133+81.69		
FED. AID PROJECT		ILLINOIS	FED. ROAD DIST. NO.	

- BRIDGE DECK REPAIRS 2007-1
- ** ROCK ISLAND & WHITESIDE



\$FILE\$ SET JUN 10 15:26:39 2009

REVISIED 2/18/09
SHEET

REVISIONS	
NAME	DATE

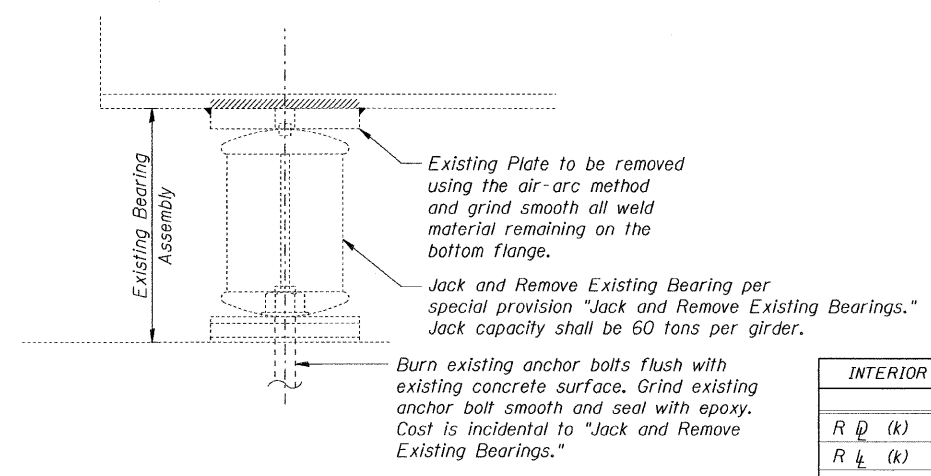
ILLINOIS DEPARTMENT OF TRANSPORTATION

CH 49 (317th STREET) BRIDGE OVER I-88
STRUCTURE NO.: 081-0132
BRIDGE REHABILITATION

PROPOSED ROADWAY PLAN

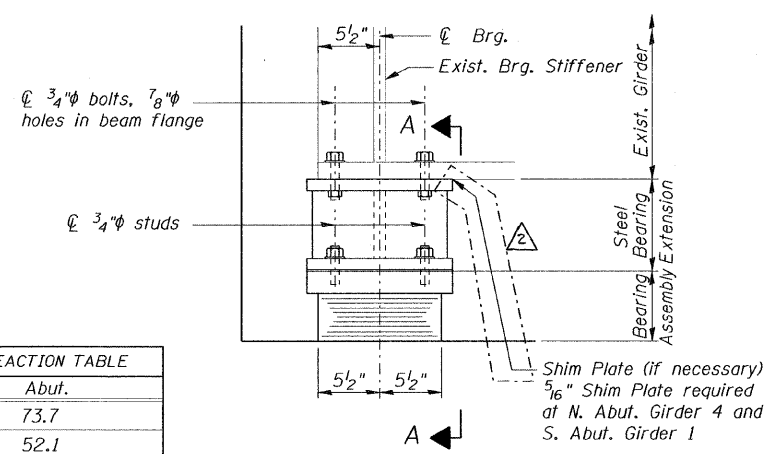
SCALE: 1"=20'
DATE 12/09/08

DRAWN BY EF
CHECKED BY RS

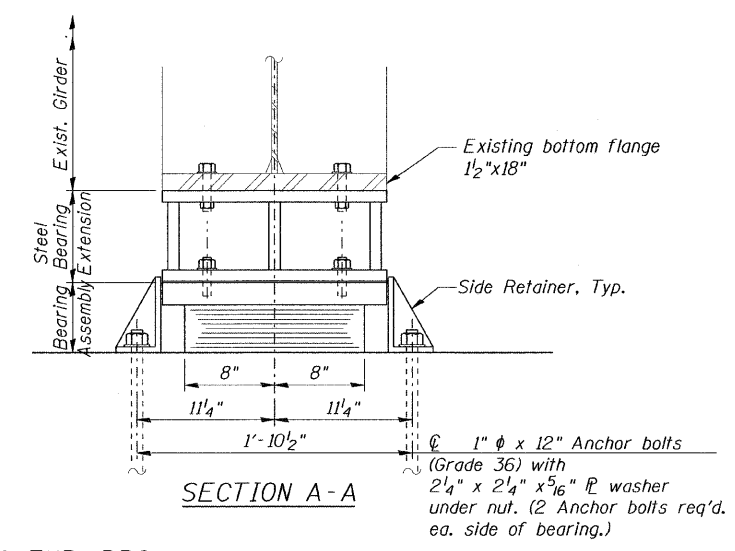


EXISTING BEARING REMOVAL DETAIL

INTERIOR GIRDER REACTION TABLE	
	Abut.
R _D (k)	73.7
R _L (k)	52.1
Imp. (k)	10.6
R _{Total} (k)	136.4

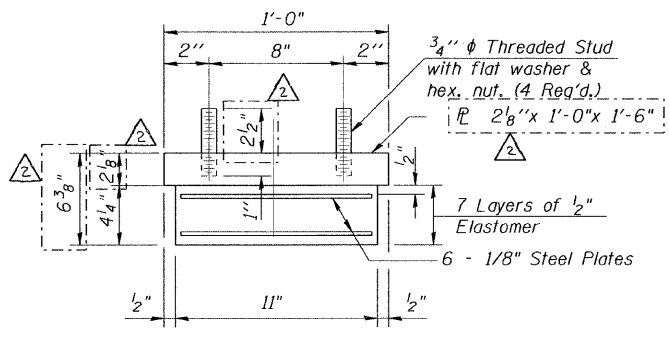


ELEVATION AT ABUT.



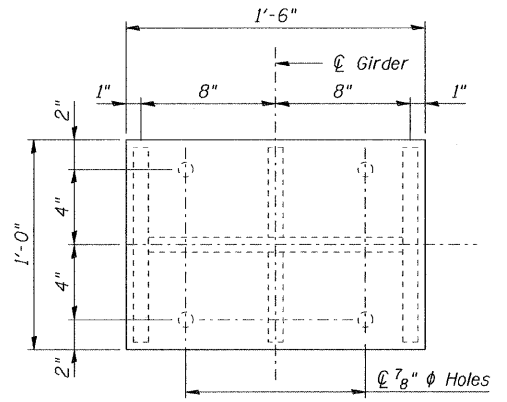
SECTION A-A

TYPE I ELASTOMERIC EXP. BRG.



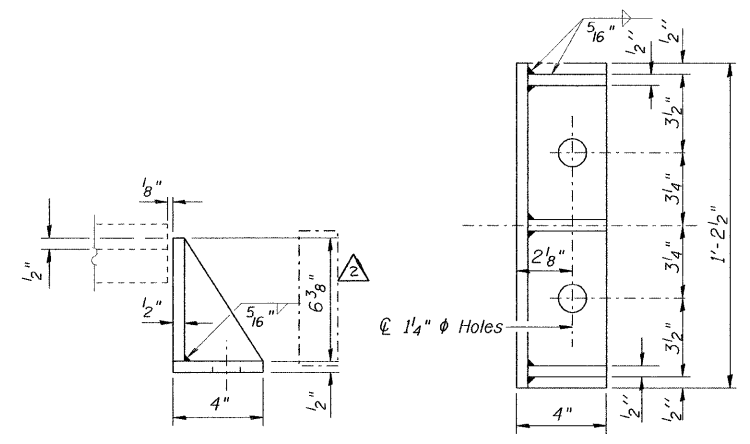
BEARING ASSEMBLY

Note:
Shim plates shall not be placed under Bearing Assembly.

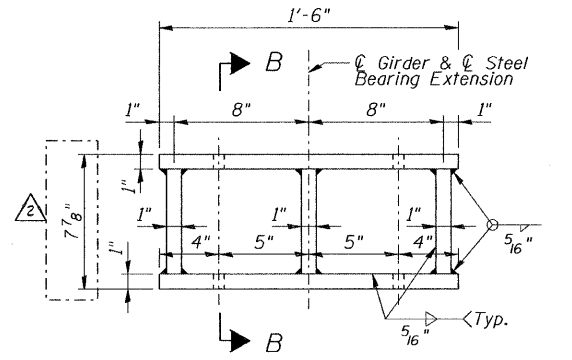


PLAN STEEL BEARING EXTENSION

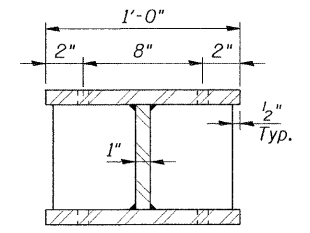
Notes:
Anchor bolts shall be ASTM F1554 all-thread (or an Engineer-approved alternate material) of the grade(s) and diameter(s) specified. ASTM A307 Grade C anchor bolts may be used in lieu of ASTM F1554 Grade 36 (Fy=36ksi). The corresponding specified grade of AASHTO M314 anchor bolts may be used in lieu of ASTM F1554.
Drilled and set anchor bolts shall be installed according to Article 521.06 of the Standard Specifications.
Side retainers, shall be included in the cost of Elastomeric Bearing Assembly, Type I.
The structural steel plates of the Bearing Assembly and the Steel Bearing Extension shall conform to the requirements of AASHTO M 270 Grade 36.
Prior to ordering any material, the Contractor shall verify in the field all bearing height and shim thickness dimensions.
Diaphragm removal and reinstallation may be required to facilitate drilling holes. Cost included with Furnishing and Erecting Structural Steel.
New Steel extensions, shim plates and connection bolts are included with Furnishing and Erecting Structural Steel.



SIDE RETAINER
Equivalent rolled angle with stiffeners will be allowed in lieu of welded plates.



ELEVATION STEEL BEARING EXTENSION



SECTION B-B

STEEL BEARING EXTENSION

BILL OF MATERIAL

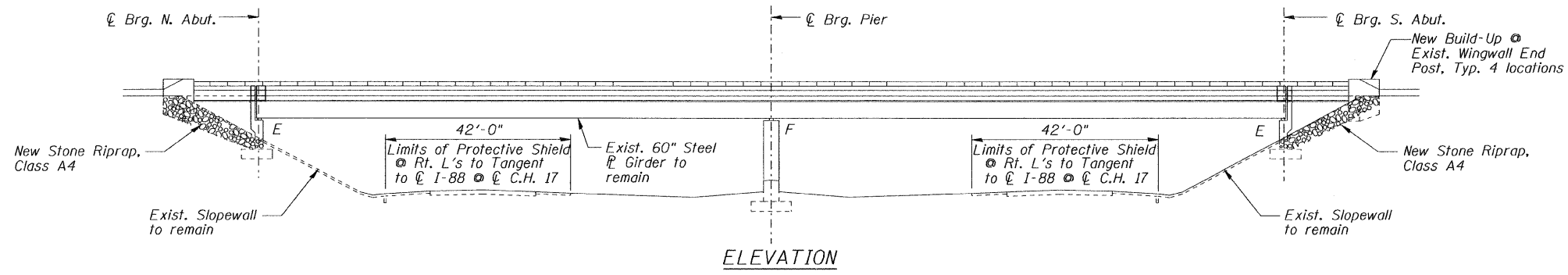
Item	Unit	Total
Jack and Remove Existing Bearings	Each	8
Elastomeric Bearing Assembly, Type I	Each	8
Anchor Bolts, 1"	Each	32
Furnishing and Erecting Structural Steel	Pound	1,690

DESIGNED	S.D.H.
CHECKED	E.E.J.
DRAWN	M.S.M.
CHECKED	S.D.H.

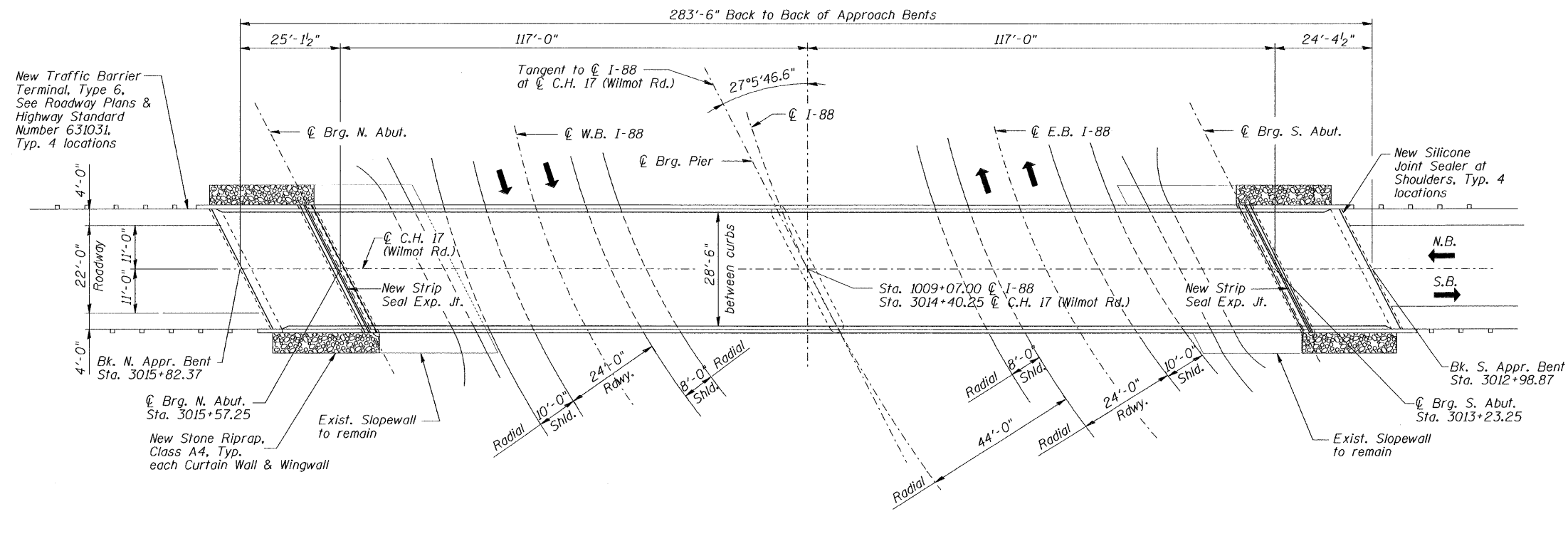
TYPE I ELASTOMERIC BEARING
C.H. 49 (317th STREET) OVER I-88
F.A.I. ROUTE 88
SECTION: BRIDGE DECK REPAIRS 2007-1
ROCK ISLAND COUNTY
STATION 2130+77.86
S.N. 081-0132
DATE: 12-09-08
GRAEF, ANHALT, SCHLOEMER & ASSOCIATES INC
CHICAGO ILLINOIS

REVISED
2/18/09

n:\jobs\2008\p101\2001-4014-09\081-0132\317th ST.\00\081-0132-S27.dgn 2/5/2009



ELEVATION



PLAN

TOTAL BILL OF MATERIAL

ITEM	UNIT	QUANTITY
STONE RIPRAP, CLASS A4	SQ. YD.	98
FILTER FABRIC	SQ. YD.	98
HOT-MIX ASPHALT SURFACE COURSE, MIX "C", N50	TON	75
HOT-MIX ASPHALT SURFACE REMOVAL (DECK)	SQ. YD.	897
CONCRETE REMOVAL	CU. YD.	8.3
PROTECTIVE SHIELD	SQ. YD.	273
CONCRETE SUPERSTRUCTURE	CU. YD.	9.6
PROTECTIVE COAT	SQ. YD.	24
CLEANING AND PAINTING STEEL BRIDGE NO. 3	L. SUM	1
CONTAINMENT AND DISPOSAL OF LEAD PAINT CLEANING RESIDUES NO. 3	L. SUM	1
REINFORCEMENT BARS, EPOXY COATED	POUND	1,420
PREFORMED JOINT STRIP SEAL	FOOT	68
JACK AND REMOVE EXISTING BEARINGS	EACH	8

ITEM	UNIT	QUANTITY
ELASTOMERIC BEARING ASSEMBLY, TYPE 1	EACH	8
ANCHOR BOLTS, 1/4" x 2"	EACH	16
FURNISHING AND ERECTING STRUCTURAL STEEL	POUND	1690
PLUG EXISTING DECK DRAINS	EACH	36
SILICONE JOINT SEALER, 1"	FOOT	18
WATERPROOFING MEMBRANE SYSTEM	SQ. YD.	884
DRAINAGE SCUPPERS, DS-33	EACH	4
STRUCTURAL REPAIR OF CONCRETE (DEPTH<5")	SQ. FT.	198
BRIDGE CLEANING AND PAINTING WARRANTY NUMBER 3	L. SUM	1
DECK SLAB REPAIR (FULL DEPTH, TYPE I)	SQ YD	21
DECK SLAB REPAIR (FULL DEPTH, TYPE II)	SQ YD	27
DECK SLAB REPAIR (PARTIAL)	SQ YD	63

DESIGNED	S.D.H.
CHECKED	E.E.J.
DRAWN	M.S.M.
CHECKED	S.D.H.

GENERAL NOTES

All structural steel shall be AASHTO M 270 Grade 50.

No field welding is permitted except as specified in the contract documents.

Reinforcement bars shall conform to the requirements of ASTM A 706 Gr 60. See Special Provisions.

Reinforcement bars designated (E) shall be epoxy coated.

Prior to pouring the new concrete deck at the expansion joint, all heavy or loose rust, loose mill scale, and other loose or potentially detrimental foreign material shall be removed from the surfaces in contact with concrete. Tightly adhered paint may remain unless otherwise noted. Removal shall be accomplished by methods that will not damage the steel and the cost will be included in the pay item covering removal of the existing concrete.

As directed by the Engineer, existing construction accessories welded to the top flange of beams and girders shall be removed. The weld areas shall be ground flush and inspected for cracks using magnetic particle testing (MT) or dye penetrant testing (PT) by an individual acceptable to the Engineer. Any cracks that cannot be removed by grinding 1/4 in. deep shall be identified and reported to the Bureau of Bridges and Structures for further disposition. The cost of removing welded accessories, grinding and inspecting weld areas and grinding cracks will be paid for according to Article 109.04 of the Standard Specifications.

Plan dimensions and details relative to existing plans and are subject to routine variations. The Contractor shall field verify existing dimensions and details affecting new construction and make necessary approved adjustments prior to construction or ordering of materials. Such variations shall not be cause for additional compensation for a change in the scope of the work, however, the Contractor will be paid for the quantity actually furnished at the unit price bid for the work.

Protective Coat shall not be applied to surfaces to which Waterproofing Membrane System is applied.

The existing structural steel coating contains lead. The Contractor shall take appropriate precautions to deal with the presence of lead on this project.

Joint openings shall be adjusted according to Article 520.04 of the Standard Specifications when the deck is poured at an ambient temperature other than 50° F.

All structural steel at expansion joints shall be shop painted with the inorganic zinc rich primer per AASHTO M300, Type 1. Cost included with Preformed Joint Strip Seal.

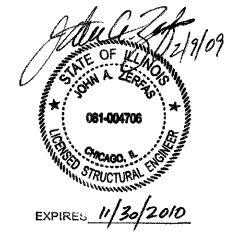
Quantities for deck slab repair are approximate. Quantity of Deck Slab Repair (Full Depth, Type I) and Deck Slab Repair (Full Depth, Type II) are each assumed to be equal to 2.50% of the deck area. Quantity of Deck Slab Repair (Partial) is assumed to be equal to 7.5% of the deck area. Locations will be determined by the Resident Engineer following removal of the Hot-Mix Asphalt Surface Course. Actual repair locations shall be shown on the as-built plans. Contractor will be paid for the quantity furnished.

Cleaning and painting of the existing structural steel shall be as specified in the special provision for "Cleaning and Painting Existing Steel Structures". All existing steel shall be cleaned per Near White Blast Cleaning - SSPC-SP10. All existing steel shall be painted according to the requirements of Paint System 1 - 02/E/U. The color of the final finish coat for all interior steel surfaces shall be Gray, Munsell No. 5B 7/1. The color of the final finish coat for the exterior and bottom flange of the fascia beams shall be Blue, Munsell No. 10B 3/6.

A minimum of 2 air monitors will be required to monitor abrasive blasting operations at this site, see special provision for "Containment and Disposal of Lead Paint Cleaning Residues."

The SSPC QP1 & QP2 certifications will be required for this contract.

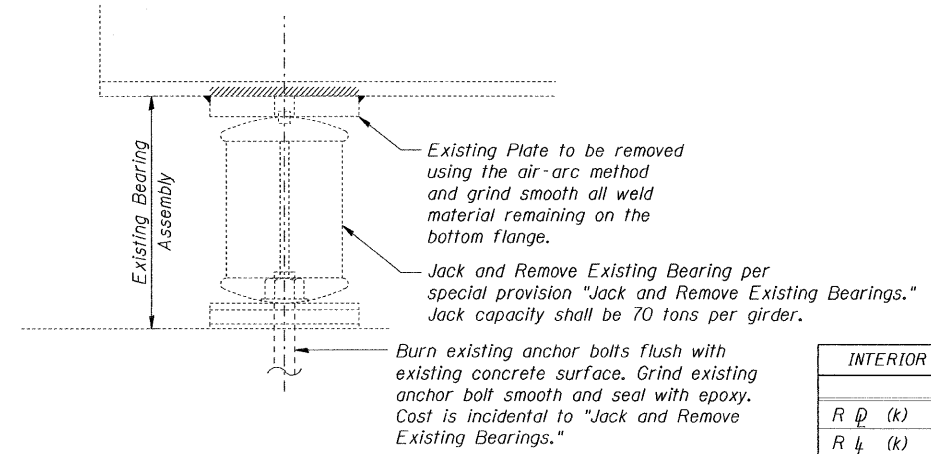
Existing plans are available from the District to determine painting quantities.



GENERAL PLAN & ELEVATION
 C.H. 17 (WILMOT ROAD) OVER I-88
 F.A.I. ROUTE 88
 SECTION: BRIDGE DECK REPAIRS 2007-1
 WHITESIDE COUNTY
 STATION 3014+40.25
 S.N. 098-0058
 DATE: 12-09-08
 GRAEF, ANHALT, SCHLOEMER & ASSOCIATES INC
 CHICAGO ILLINOIS

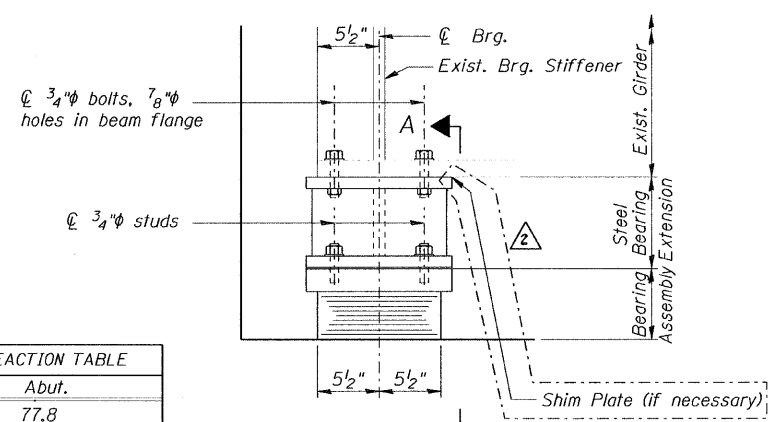
REVISED 2/18/09

n:\jobs\2008\p101\2001-4014.09\098-0058\Wilmot Rd.\00\098-0058-S33.dgn
 2/5/2009

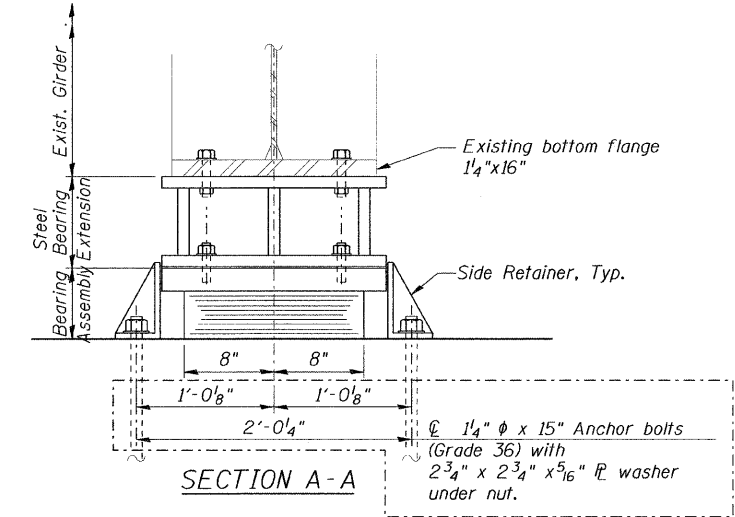


EXISTING BEARING REMOVAL DETAIL

	Abut.
R _D (k)	77.8
R _L (k)	41.6
Imp. (k)	8.6
R _{Total} (k)	128.0

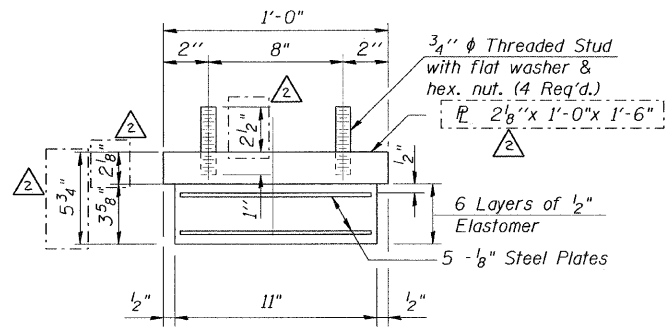


ELEVATION AT ABUT.



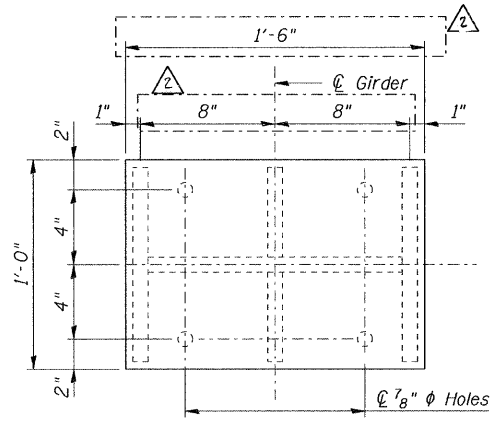
SECTION A-A

TYPE I ELASTOMERIC EXP. BRG.



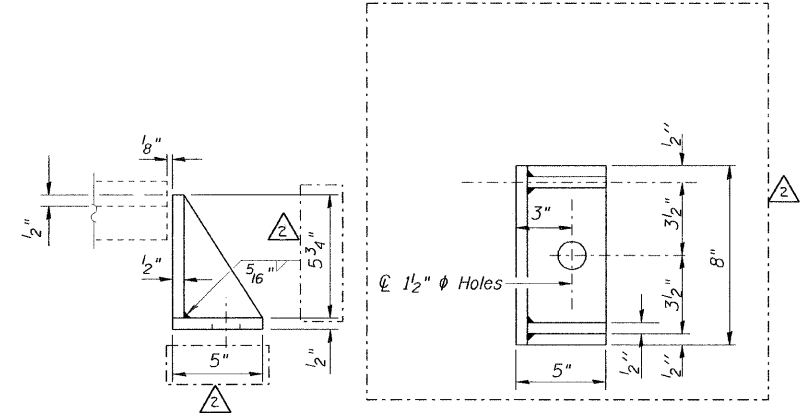
BEARING ASSEMBLY

Note: Shim plates shall not be placed under Bearing Assembly.



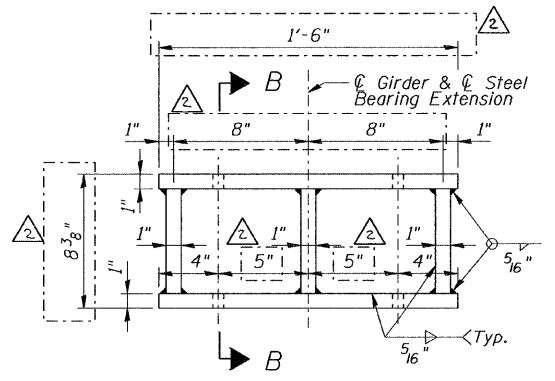
PLAN STEEL BEARING EXTENSION

Notes:
 Anchor bolts shall be ASTM F1554 all-thread (or an Engineer-approved alternate material) of the grade(s) and diameter(s) specified. ASTM A307 Grade C anchor bolts may be used in lieu of ASTM F1554 Grade 36 (Fy=36ksi). The corresponding specified grade of AASHTO M314 anchor bolts may be used in lieu of ASTM F1554.
 Drilled and set anchor bolts shall be installed according to Article 521.06 of the Standard Specifications.
 Side retainers shall be included in the cost of Elastomeric Bearing Assembly, Type I.
 The structural steel plates of the Bearing Assembly and the Steel Bearing Extension shall conform to the requirements of AASHTO M 270 Grade 36.
 Prior to ordering any material, the Contractor shall verify in the field all bearing height and shim thickness dimensions. Diaphragm removal and reinstallation may be required to facilitate drilling holes. Cost included with Furnishing and Erecting Structural Steel.
 New Steel extensions, shim plates and connection bolts are included with Furnishing and Erecting Structural Steel.

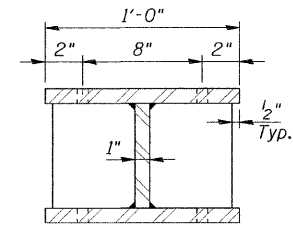


SIDE RETAINER

Equivalent rolled angle with stiffeners will be allowed in lieu of welded plates.



ELEVATION STEEL BEARING EXTENSION



SECTION B-B

STEEL BEARING EXTENSION

BILL OF MATERIAL

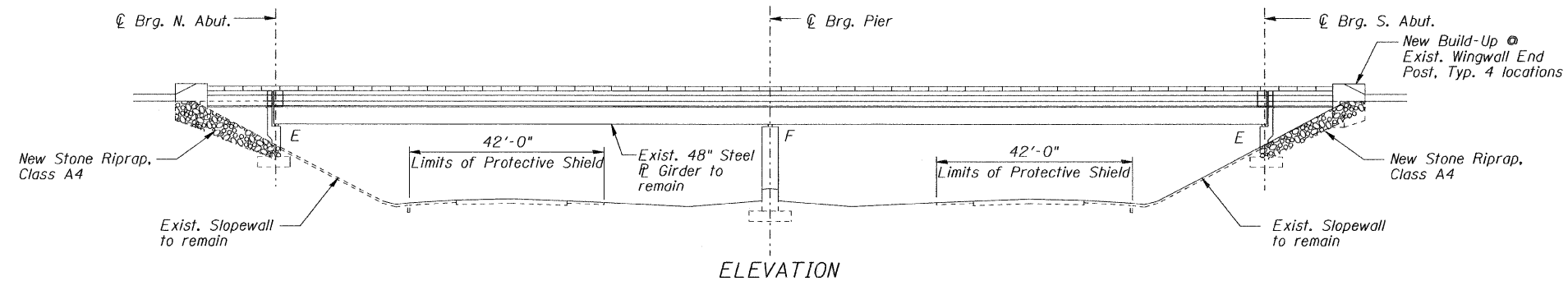
Item	Unit	Total
Jack and Remove Existing Bearings	Each	8
Elastomeric Bearing Assembly, Type I	Each	8
Anchor Bolts, 1 1/4"	Each	16
Furnishing and Erecting Structural Steel	Pound	1,690

DESIGNED	S.D.H.
CHECKED	E.E.J.
DRAWN	M.S.M.
CHECKED	S.D.H.

TYPE I ELASTOMERIC BEARING
 C.H. 17 (WILMOT ROAD) OVER I-88
 F.A.I. ROUTE 88
 SECTION: BRIDGE DECK REPAIRS 2007-1
 WHITESIDE COUNTY
 STATION 3014+40.25
 S.N. 098-0058
 DATE: 12-09-08
 GRAEF, ANHALT, SCHLOEMER & ASSOCIATES INC
 CHICAGO ILLINOIS

REVISED 2/18/09

n:\jobs\2008\pilot\2001-4014.09\098-0058\filmot Rd.\00\098-0058-S38.dgn
 2/5/2009



GENERAL NOTES

All structural steel shall be AASHTO M 270 Grade 50.

No field welding is permitted except as specified in the contract documents.

Reinforcement bars shall conform to the requirements of ASTM A 706 Gr 60. See Special Provisions.

Reinforcement bars designated (E) shall be epoxy coated.

Prior to pouring the new concrete deck at the expansion joint, all heavy or loose rust, loose mill scale, and other loose or potentially detrimental foreign material shall be removed from the surfaces in contact with concrete. Tightly adhered paint may remain unless otherwise noted. Removal shall be accomplished by methods that will not damage the steel and the cost will be included in the pay item covering removal of the existing concrete.

As directed by the Engineer, existing construction accessories welded to the top flange of beams and girders shall be removed. The weld areas shall be ground flush and inspected for cracks using magnetic particle testing (MT) or dye penetrant testing (PT) by an individual acceptable to the Engineer. Any cracks that cannot be removed by grinding 1/4 in. deep shall be identified and reported to the Bureau of Bridges and Structures for further disposition. The cost of removing welded accessories, grinding and inspecting weld areas and grinding cracks will be paid for according to Article 109.04 of the Standard Specifications.

Plan dimensions and details relative to existing plans and are subject to routine variations. The Contractor shall field verify existing dimensions and details affecting new construction and make necessary approved adjustments prior to construction or ordering of materials. Such variations shall not be cause for additional compensation for a change in the scope of the work, however, the Contractor will be paid for the quantity actually furnished at the unit price bid for the work.

Protective Coat shall not be applied to surfaces to which Waterproofing Membrane System is applied.

The existing structural steel coating contains lead. The Contractor shall take appropriate precautions to deal with the presence of lead on this project.

Joint openings shall be adjusted according to Article 520.04 of the Standard Specifications when the deck is poured at an ambient temperature other than 50° F.

All structural steel at expansion joints shall be shop painted with the inorganic zinc rich primer per AASHTO M300, Type 1. Cost included with Preformed Joint Strip Seal.

Quantities for deck slab repair are approximate. Locations will be determined by the Resident Engineer following removal of the existing Hot-Mix Asphalt Surface Course. Actual repair locations shall be shown on the as-built plans. Contractor will be paid for the quantity furnished.

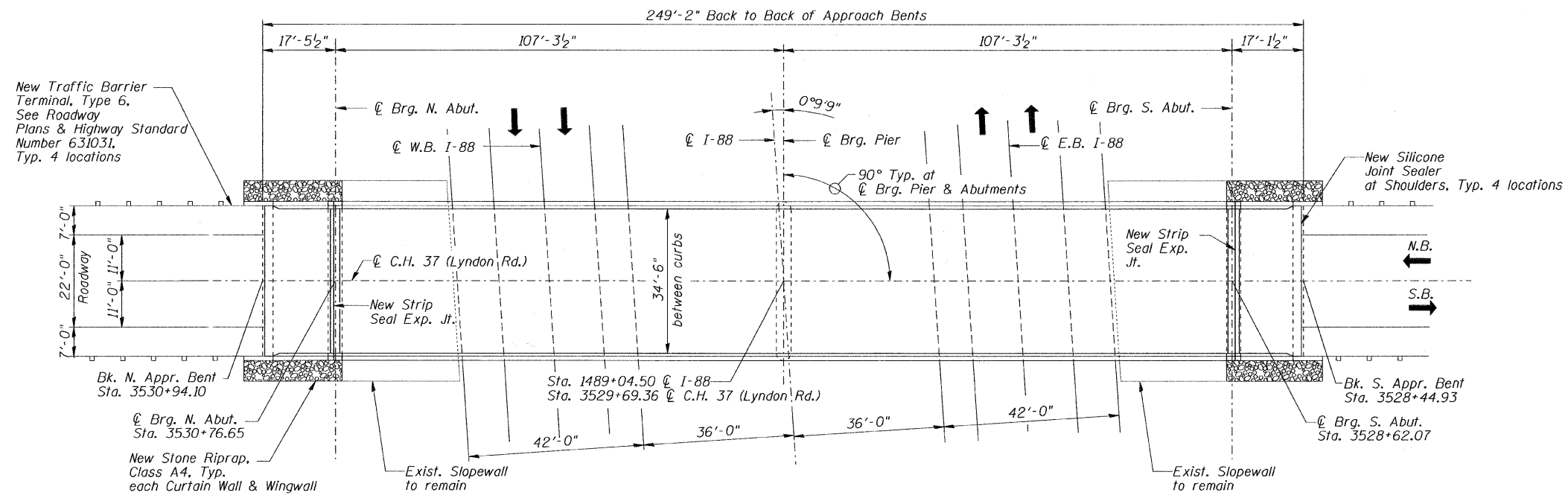
The existing Hot-Mix Asphalt Surface Course has tested positive for asbestos. Removal and disposal of the existing Hot-Mix Asphalt Surface Course shall be in accordance with the Special Provision for "Asbestos Waterproofing Membrane or Asbestos Hot-Mix Asphalt Surface Removal".

Cleaning and painting of the existing structural steel shall be as specified in the special provision for "Cleaning and Painting Existing Steel Structures". All existing steel shall be cleaned per Near White Blast Cleaning - SSPC-SP10. All existing steel shall be painted according to the requirements of Paint System 1 - OZ/E/U. The color of the final finish coat for all interior steel surfaces shall be Gray, Munsell No. 5B 7/1. The color of the final finish coat for the exterior and bottom flange of the fascia beams shall be Blue, Munsell No. 10B 3/6.

A minimum of 2 air monitors will be required to monitor abrasive blasting operations at this site, see special provision for "Containment and Disposal of Lead Paint Cleaning Residues."

The SSPC QP1 & QP2 certifications will be required for this contract.

Existing plans are available from the District to determine painting quantities.



PLAN

TOTAL BILL OF MATERIAL

ITEM	UNIT	QUANTITY
STONE RIPRAP, CLASS A4	SQ. YD.	71
FILTER FABRIC	SQ. YD.	71
HOT-MIX ASPHALT SURFACE COURSE, MIX "C", NSO	TON	79
HOT-MIX ASPHALT SURFACE REMOVAL (ASBESTOS)	SQ. YD.	951
CONCRETE REMOVAL	CU. YD.	8.1
PROTECTIVE SHIELD	SQ. YD.	299
CONCRETE SUPERSTRUCTURE	CU. YD.	9.3
PROTECTIVE COAT	SQ. YD.	23
CLEANING AND PAINTING STEEL BRIDGE NO. 4	L. SUM	1
CONTAINMENT AND DISPOSAL OF LEAD PAINT CLEANING RESIDUES NO. 4	L. SUM	1
REINFORCEMENT BARS, EPOXY COATED	POUND	1,390
PREFORMED JOINT STRIP SEAL	FOOT	73
JACK AND REMOVE EXISTING BEARINGS	EACH	10

ITEM	UNIT	QUANTITY
ELASTOMERIC BEARING ASSEMBLY, TYPE 1	EACH	10
ANCHOR BOLTS, 1"	EACH	40
FURNISHING AND ERECTING STRUCTURAL STEEL	POUND	1920
PLUG EXISTING DECK DRAINS	EACH	72
SILICONE JOINT SEALER, 1"	FOOT	28
WATERPROOFING MEMBRANE SYSTEM	SQ. YD.	937
DRAINAGE SCUPPERS, DS-33	EACH	4
STRUCTURAL REPAIR OF CONCRETE (DEPTH<5")	SQ. FT.	176
BRIDGE CLEANING AND PAINTING WARRANTY NUMBER 4	L. SUM	1
DECK SLAB REPAIR (FULL DEPTH, TYPE I)	SQ YD	2
DECK SLAB REPAIR (FULL DEPTH, TYPE II)	SQ YD	55
DECK SLAB REPAIR (PARTIAL)	SQ YD	126

DESIGNED	S.D.H.
CHECKED	E.E.J.
DRAWN	M.S.M.
CHECKED	S.D.H.

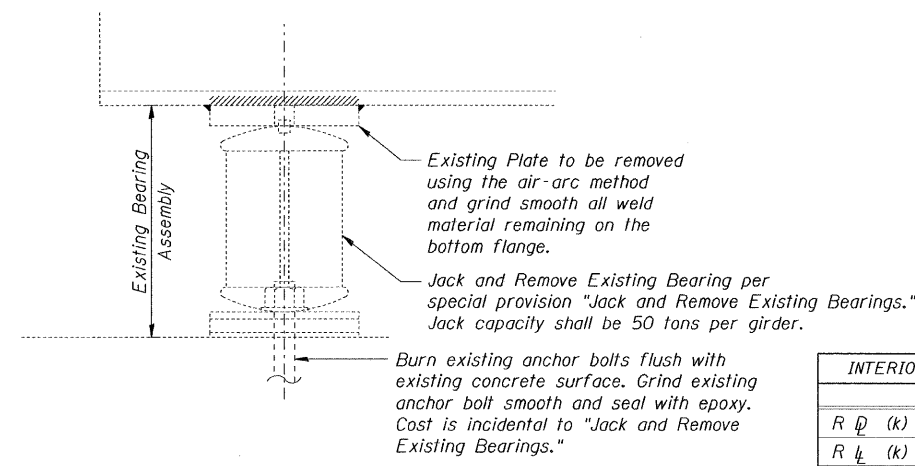


GENERAL PLAN & ELEVATION
C.H. 37 (LYNDON ROAD) OVER I-88
F.A.I. ROUTE 88
SECTION: BRIDGE DECK REPAIRS 2007-1
WHITESIDE COUNTY
STATION 3529+69.36
S.N. 098-0066

DATE: 12-09-08
 GRAEF, ANHALT, SCHLOEMER & ASSOCIATES INC
 CHICAGO ILLINOIS

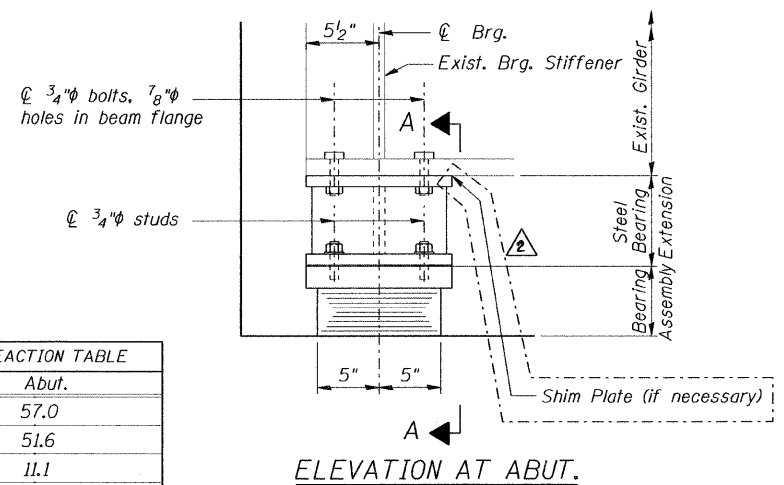
REVISED 2/18/09

n:\jobs2008\plot\2001-4014\09\098 0066(Lyndon Rd.)\00\098-0066-544.dgn 2/5/2009

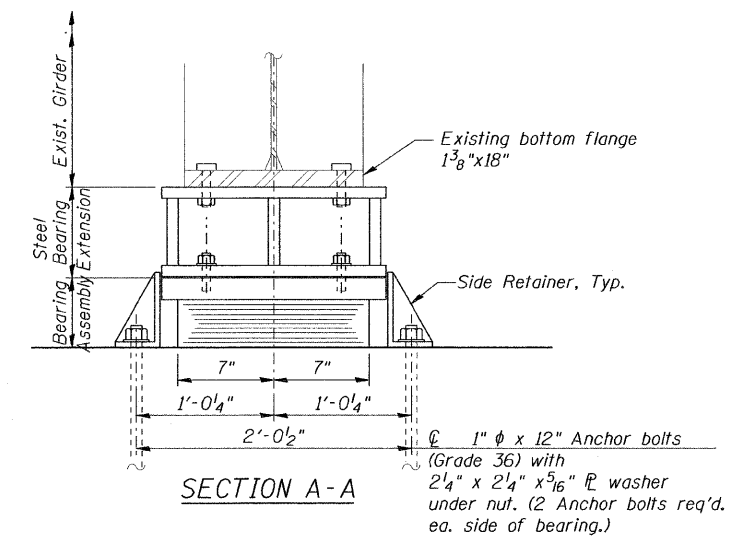


EXISTING BEARING REMOVAL DETAIL

INTERIOR GIRDER REACTION TABLE	
	Abut.
R _D (k)	57.0
R _L (k)	51.6
Imp. (k)	11.1
R _{Total} (k)	119.7

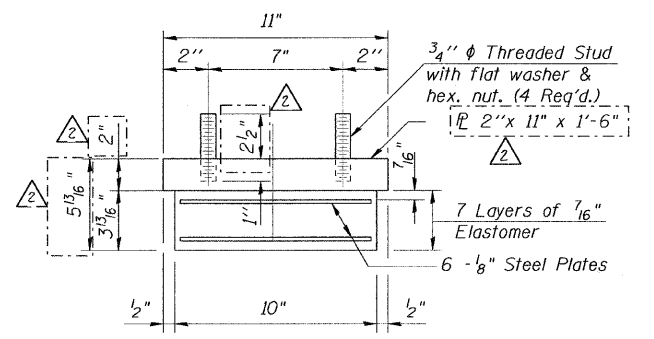


ELEVATION AT ABUT.



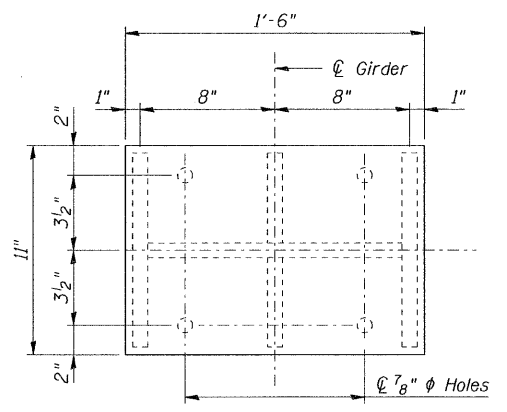
SECTION A-A

TYPE I ELASTOMERIC EXP. BRG.



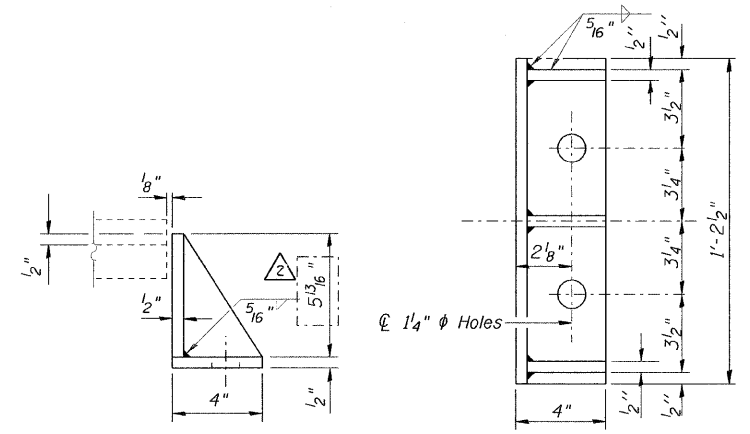
BEARING ASSEMBLY

Note: Shim plates shall not be placed under Bearing Assembly.

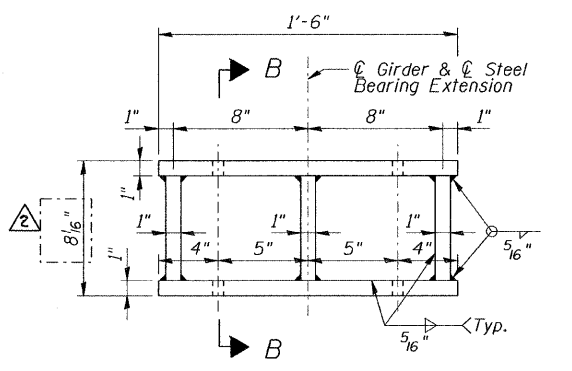


PLAN STEEL BEARING EXTENSION

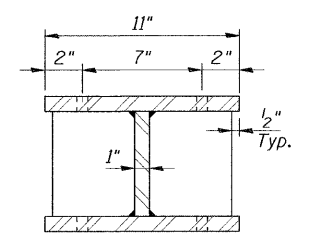
Notes:
 Anchor bolts shall be ASTM F1554 all-thread (or an Engineer-approved alternate material) of the grade(s) and diameter(s) specified. ASTM A307 Grade C anchor bolts may be used in lieu of ASTM F1554 Grade 36 (Fy=36ksi). The corresponding specified grade of AASHTO M314 anchor bolts may be used in lieu of ASTM F1554.
 Drilled and set anchor bolts shall be installed according to Article 521.06 of the Standard Specifications.
 Side retainers shall be included in the cost of Elastomeric Bearing Assembly, Type I.
 The structural steel plates of the Bearing Assembly and the Steel Bearing Extension shall conform to the requirements of AASHTO M 270 Grade 36.
 Prior to ordering any material, the Contractor shall verify in the field all bearing height and shim thickness dimensions. Diaphragm removal and reinstallation may be required to facilitate drilling holes. Cost included with Furnishing and Erecting Structural Steel.
 New Steel extensions, shim plates and connection bolts are included with Furnishing and Erecting Structural Steel.



SIDE RETAINER
 Equivalent rolled angle with stiffeners will be allowed in lieu of welded plates.



ELEVATION STEEL BEARING EXTENSION



SECTION B-B

STEEL BEARING EXTENSION

BILL OF MATERIAL

Item	Unit	Total
Jack and Remove Existing Bearings	Each	10
Elastomeric Bearing Assembly, Type I	Each	10
Anchor Bolts, 1"	Each	40
Furnishing and Erecting Structural Steel	Pound	1,920

DESIGNED	S.D.H.
CHECKED	E.E.J.
DRAWN	M.S.M.
CHECKED	S.D.H.

REVISED
 2/18/09

TYPE I ELASTOMERIC BEARING
 C.H. 37 (LYNDON ROAD) OVER I-88
 F.A.I. ROUTE 88
 SECTION: BRIDGE DECK REPAIRS 2007-1
 WHITESIDE COUNTY
 STATION 3529+69.36
 S.N. 098-0066
 DATE: 12-09-08
 GRAEF, ANHALT, SCHLOEMER & ASSOCIATES INC
 CHICAGO ILLINOIS

n:\jobs2008\plot\2001-404\09\098 0066(Lyndon Rd)\00\098-0066-S49.dgn
 2/5/2009