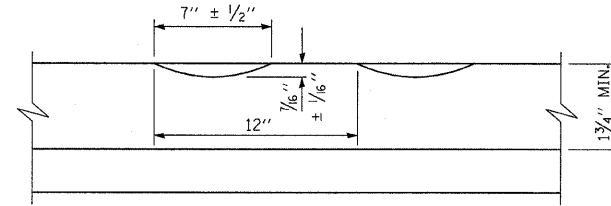
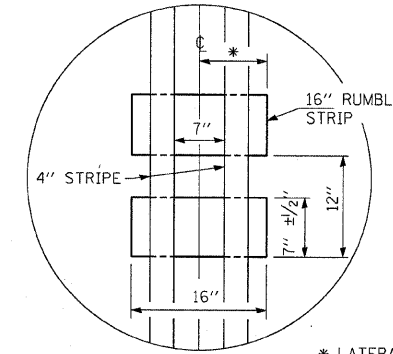


F.A. RTE.	SECTION	COUNTY	TOTAL SHEETS	SHEET NO.
840		IBOQUOIS	16	13
STA.	TO STA.			
FED. ROAD DIST. NO. ILLINOIS FED. AID PROJECT				

\* (123)RS-1 & (135)RS-2

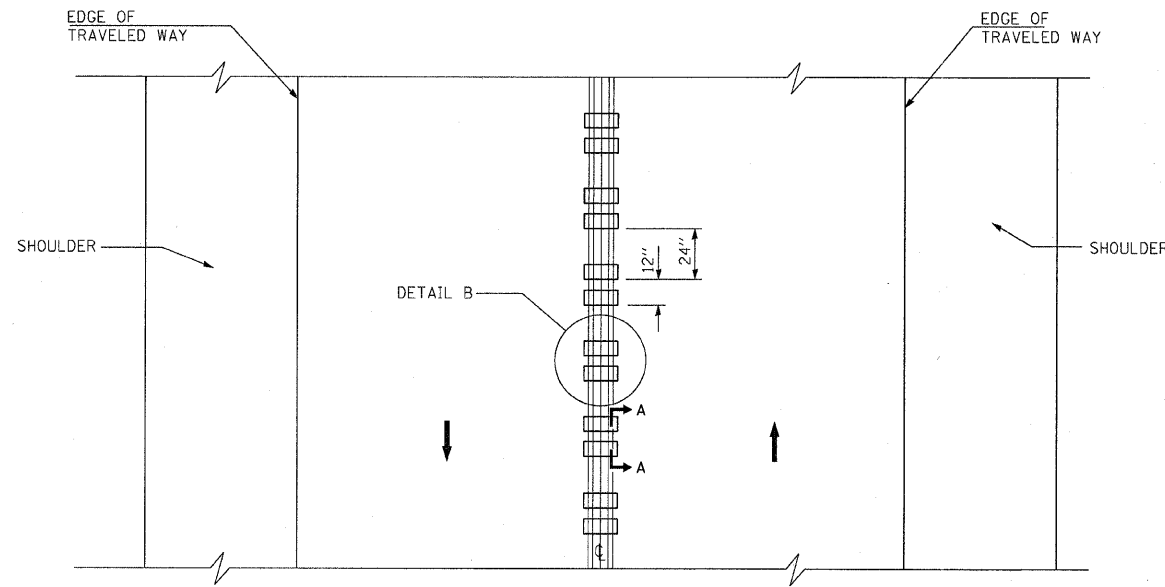


SECTION A-A



DETAIL B

\* LATERAL DEVIATION SHALL NOT EXCEED ONE INCH IN 100 FEET.

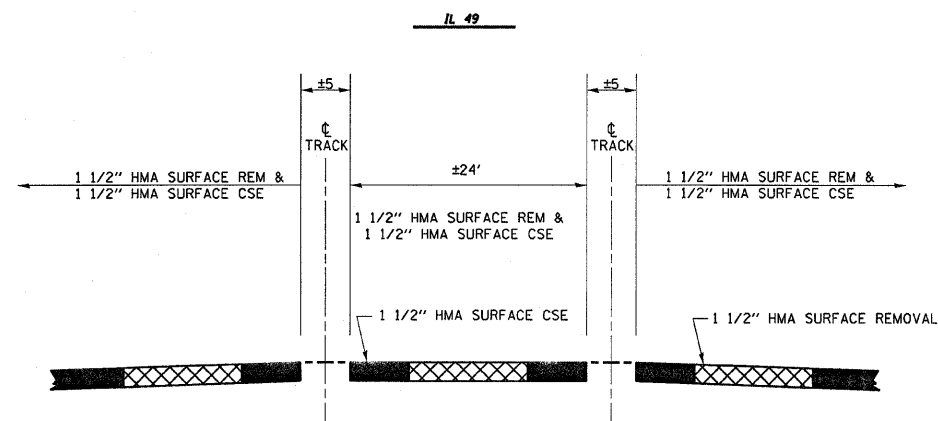


TWO-WAY ROAD

GENERAL NOTES

- SEE STANDARD 780001 FOR STRIPING.
- RUMBLE STRIPS SHALL NOT BE PLACED ON BRIDGES.
- ALL RUMBLE STRIPS SHALL BE MILLED.
- CENTERLINE RUMBLE STRIPS SHALL BE CONTINUOUS THROUGH CONNECTIONS OF SIDEROADS WITH NO LEFT TURN LANES.
- DISCONTINUE CENTERLINE RUMBLE STRIPS THROUGH THE LIMITS OF ALL LEFT TURN LANES, INCLUDING ANY LANE TAPER SECTIONS.
- WHERE USED, ADJUST SPACING OF RAISED REFLECTIVE PAVEMENT MARKERS TO FALL IN WIDER GAP BETWEEN RUMBLE STRIPS.
- CENTERLINE RUMBLE STRIPS SHALL BE PLACED AS SHOWN ON THE SCHEDULE IN THE PLANS

CENTERLINE RUMBLE STRIPS



MILLING DETAIL AT RAILROAD CROSSING

REVISIONS	
NAME	DATE

ILLINOIS DEPARTMENT OF TRANSPORTATION  
**CENTERLINE RUMBLE STRIP AND RR MILLING DETAILS**

SCALE: VERT. \_\_\_\_\_  
HORIZ. \_\_\_\_\_  
DATE \_\_\_\_\_

DRAWN BY \_\_\_\_\_  
CHECKED BY \_\_\_\_\_