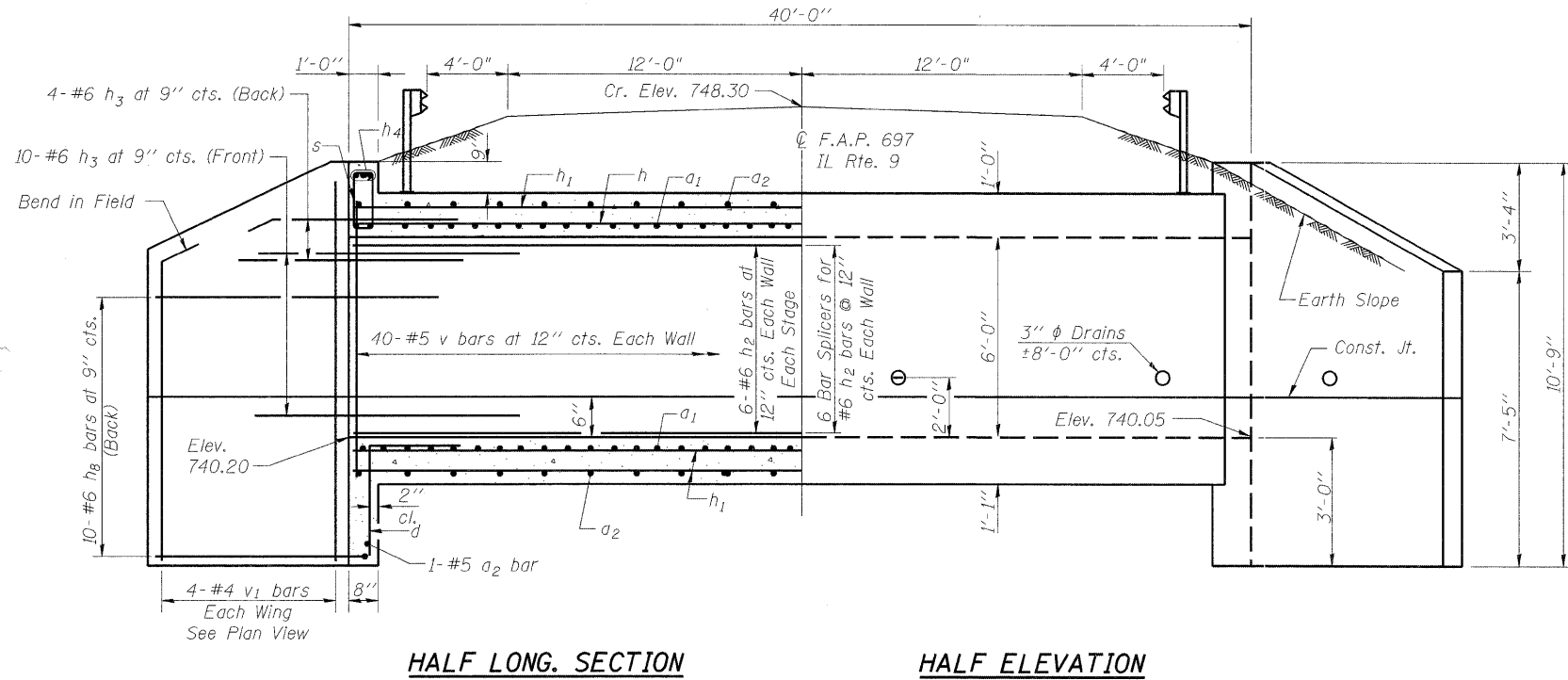
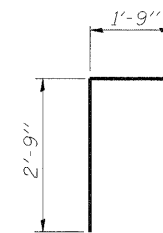


STATE OF ILLINOIS
DEPARTMENT OF TRANSPORTATION

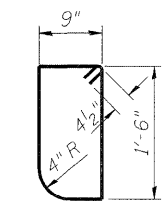


HALF LONG SECTION

HALF ELEVATION

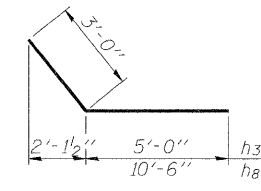


BAR d

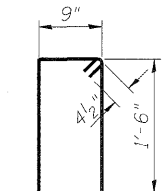


BAR s

(Up Stream End Only)

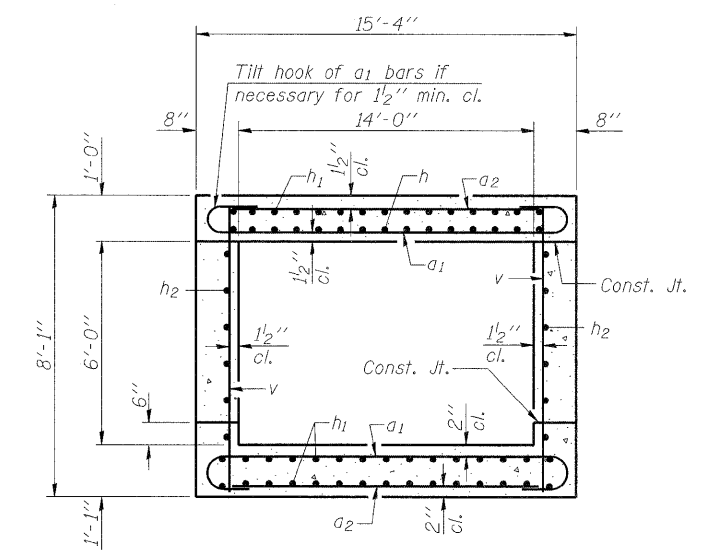


BARS h3 & h8

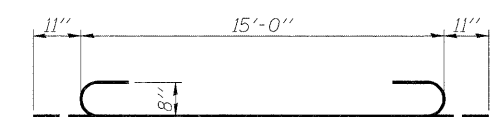


BAR s1

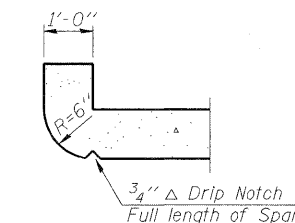
(Down Stream End Only)



SECTION THRU BARREL

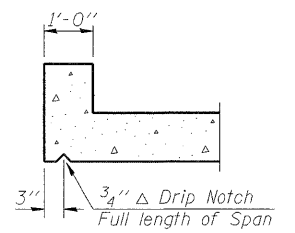


BAR a1



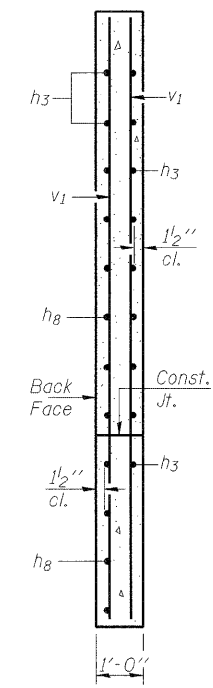
SECTION THRU HEADWALL

(Up Stream End Only)

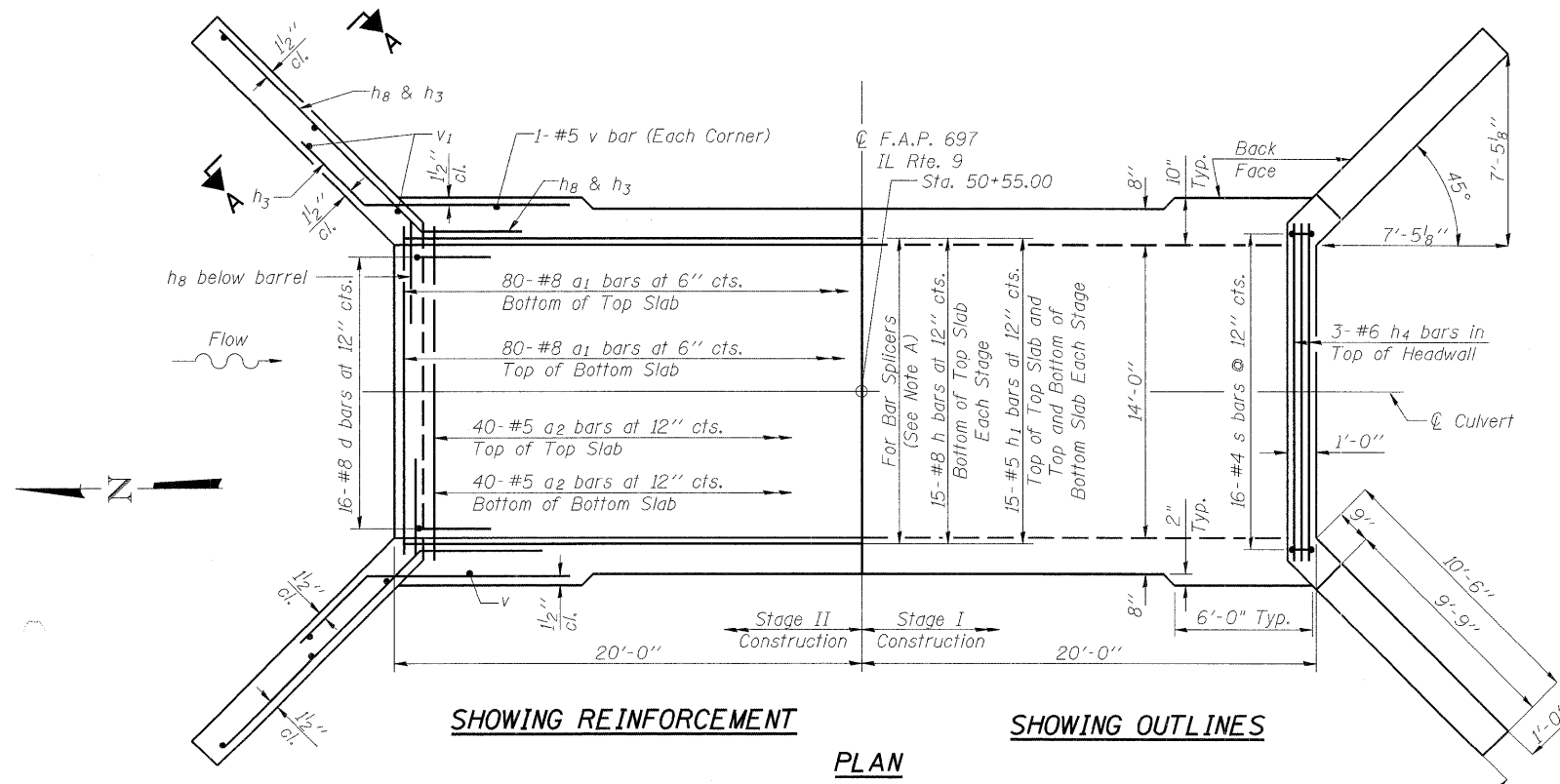


SECTION THRU HEADWALL

(Down Stream End Only)



SECTION A-A



SHOWING REINFORCEMENT

SHOWING OUTLINES

PLAN

- Note A:
 15 - Bar Splicers for #8 h bars, Bottom of Top Slab
 15 - Bar Splicers for #5 h1 bars, Top of Top Slab
 15 - Bar Splicers for #5 h1 bars, Bottom of Bottom Slab
 15 - Bar Splicers for #5 h1 bars, Top of Bottom Slab

NOTES

A distance of half the length of the wingwall but not less than six feet of the barrel shall be poured monolithically with the wingwalls. Reinforcement bars shall conform to the requirements of ASTM A 706 Gr 60. See Special Provisions.

BILL OF MATERIAL

Bar	No.	Size	Length	Shape
a1	160	#8	16'-10"	U
a2	80	#5	15'-1"	—
d	32	#4	4'-6"	U
h	30	#8	19'-9"	—
h1	90	#5	19'-9"	—
h2	24	#6	19'-9"	—
h3	56	#6	8'-0"	—
h4	6	#6	14'-9"	—
h8	40	#6	13'-6"	—
v	84	#5	7'-10"	—
v1	16	#4	10'-6"	—
s	16	#4	5'-3"	U
s1	16	#4	4'-9"	U
Concrete Box Culverts				Cu. Yd. 65.1
Reinforcement Bars				Pound 15,530
Bar Splicers				Each 72

CULVERT AND WINGWALL SECTIONS AND DETAILS
 ILLINOIS ROUTE 9 OVER DRAINAGE DITCH
 F.A.P. ROUTE 697 - SECTION 17(I)
 FORD COUNTY
 STATION 50+55.00
 SN 027-2552

Scale: None December 2008

DESIGNED - GBC/GMK
 CHECKED - GBC/GMK/SMK
 DRAWN - RR
 CHECKED - GBC/GMK/SMK

SSB-H-0

SHEET NO. S3	F.A.P. RTE. 697	SECTION 17(I)	COUNTY FORD	TOTAL SHEETS 29	SHEET NO. 19
	S5 SHEETS	CONTRACT NO. 66874			
FED. ROAD DIST. NO.		ILLINOIS FED. AID PROJECT			

