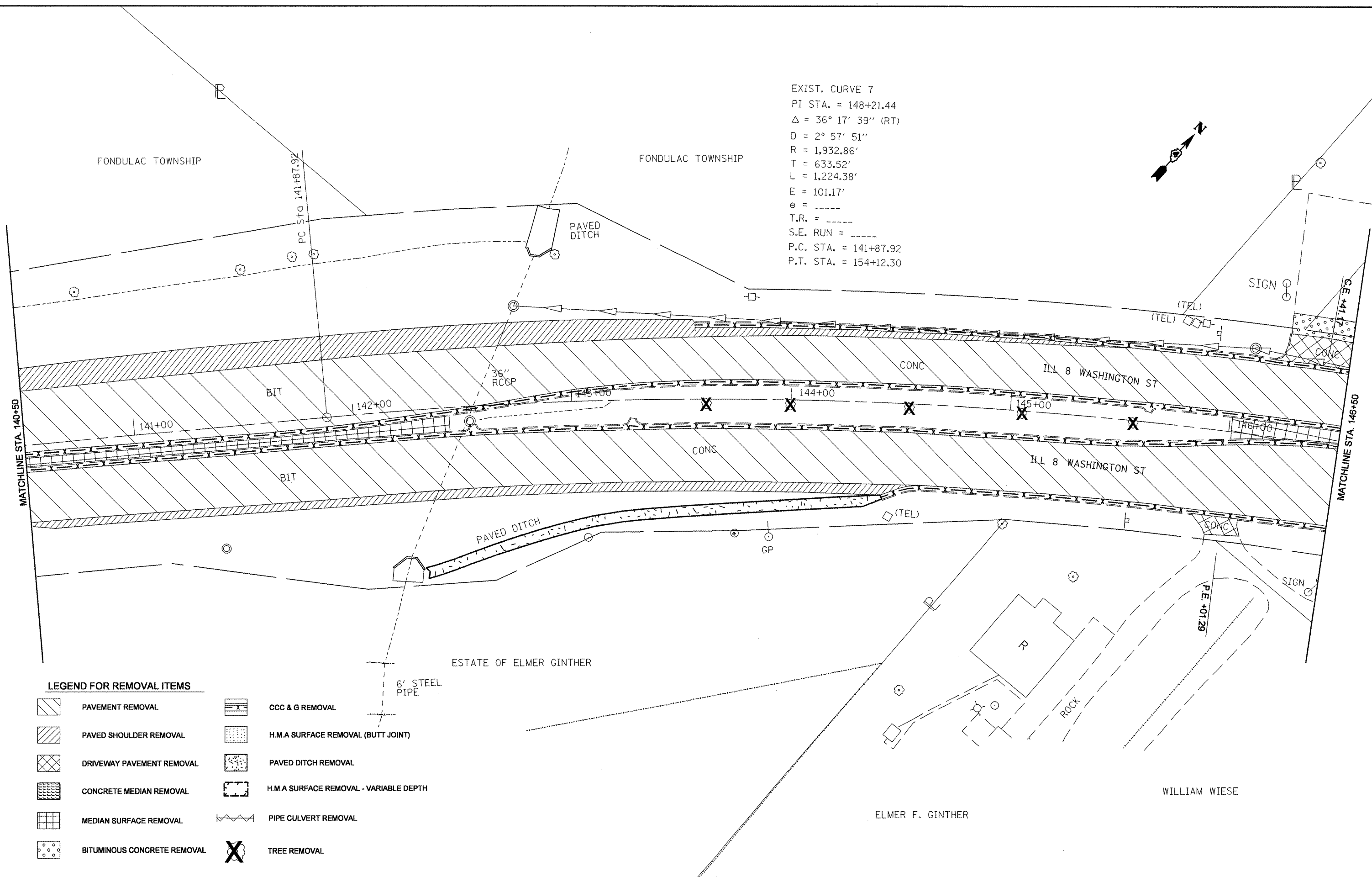
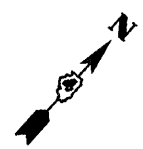


EXIST. CURVE 7
 PI STA. = 148+21.44
 $\Delta = 36^\circ 17' 39''$ (RT)
 D = 2° 57' 51"
 R = 1,932.86'
 T = 633.52'
 L = 1,224.38'
 E = 101.17'
 e = -----
 T.R. = -----
 S.E. RUN = -----
 P.C. STA. = 141+87.92
 P.T. STA. = 154+12.30



LEGEND FOR REMOVAL ITEMS

	PAVEMENT REMOVAL		CCC & G REMOVAL
	PAVED SHOULDER REMOVAL		H.M.A SURFACE REMOVAL (BUTT JOINT)
	DRIVEWAY PAVEMENT REMOVAL		PAVED DITCH REMOVAL
	CONCRETE MEDIAN REMOVAL		H.M.A SURFACE REMOVAL - VARIABLE DEPTH
	MEDIAN SURFACE REMOVAL		PIPE CULVERT REMOVAL
	BITUMINOUS CONCRETE REMOVAL		TREE REMOVAL

FILE NAME = copy of ex1-plansht.dgn	USER NAME = crespole	DESIGNED -	REVISED -	STATE OF ILLINOIS DEPARTMENT OF TRANSPORTATION	EXISTING AND REMOVAL PLANS	F.A.P. RTE. 399	SECTION 36 R-8	COUNTY TAZEWELL	TOTAL SHEETS 429	SHEET NO. 39		
	PLOT SCALE = 40.0000' / IN.	DRAWN -	REVISED -			CONTRACT NO. 68258						
	PLOT DATE = 12/11/2008	CHECKED -	REVISED -			SCALE:	SHEET NO.	OF	SHEETS	STA.	TO STA.	FED. ROAD DIST. NO. 4 ILLINOIS FED. AID PROJECT
		DATE -	REVISED -									