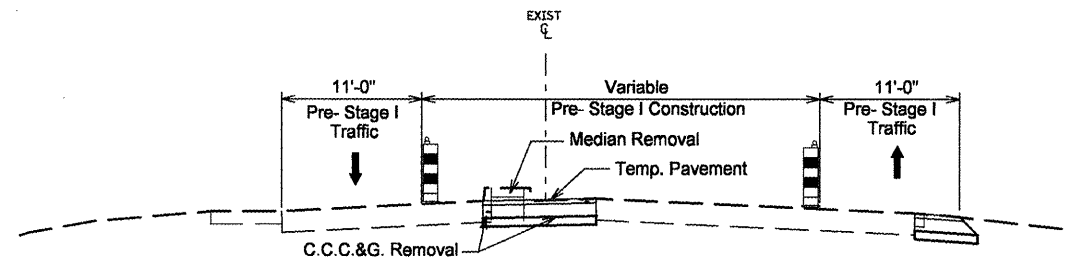
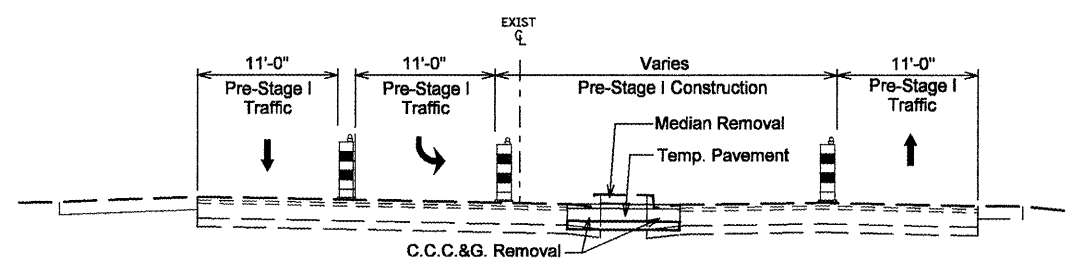


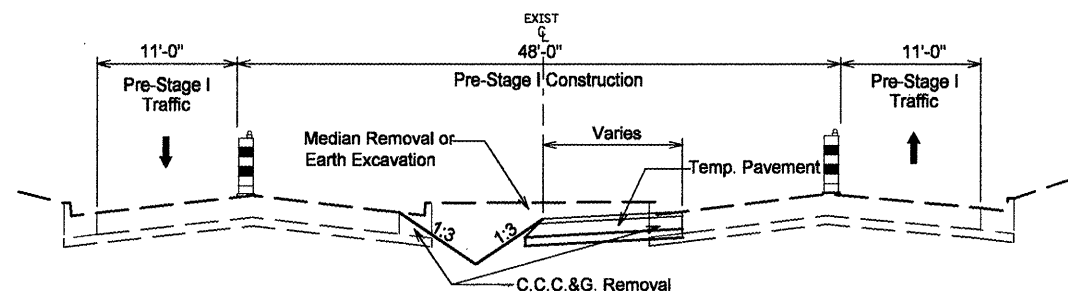
STA. 132+09.40 - 137+46.86



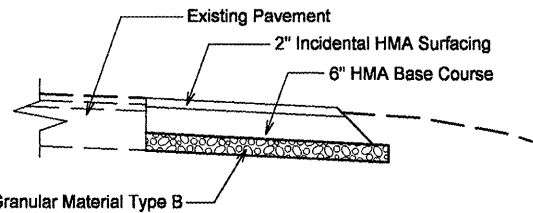
STA. 137+46.88 - 140+27.95



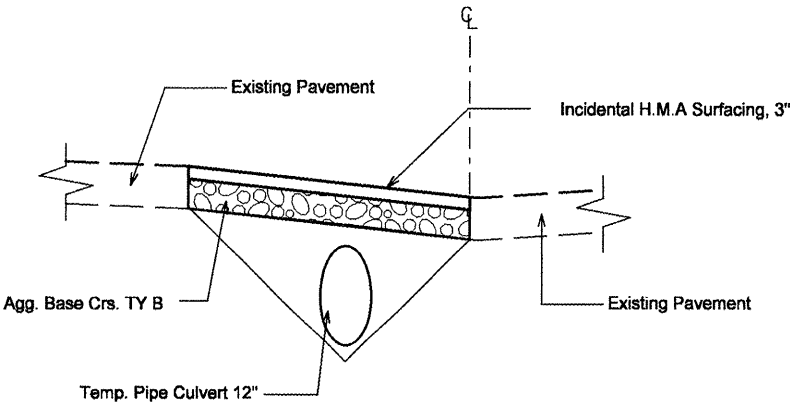
STA. 140+27.95 - 142+53.00



STA. 142+53.00 - 146+50.00 STA. 172+80.00 - 175+73.00  
 STA. 152+90.00 - 155+37.00 STA. 177+33.00 - 179+56.00  
 STA. 162+53.00 - 166+15.00 STA. 184+35.00 - 186+63.00

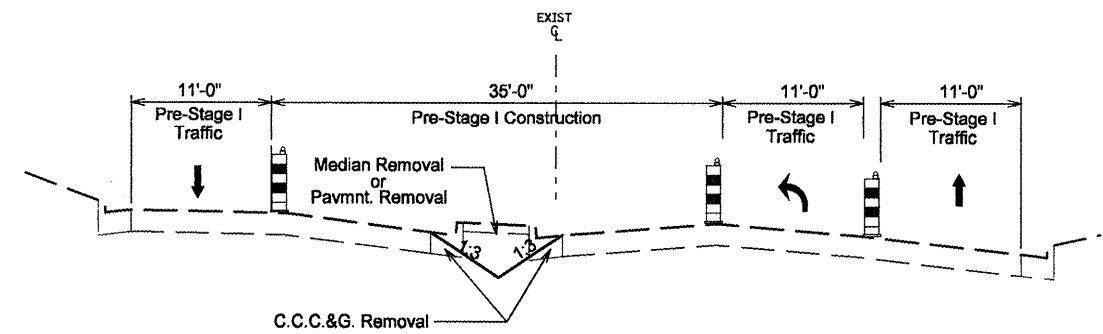


TEMPORARY PAVEMENT DETAIL

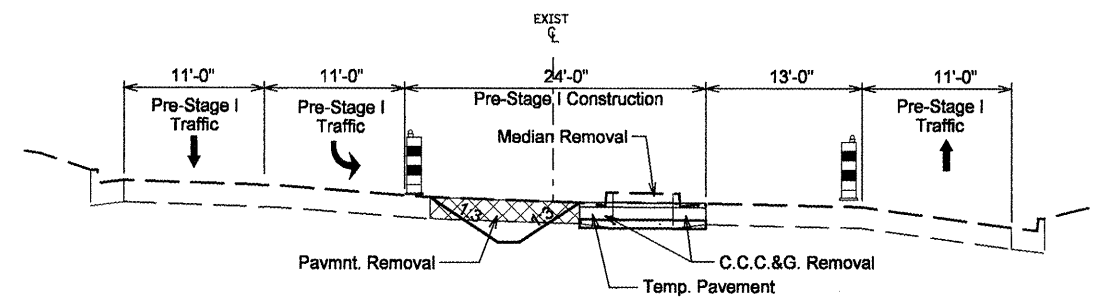


TEMPORARY ACCESS TO SIDE STREETS

(See Erosion Control Plan for locations)



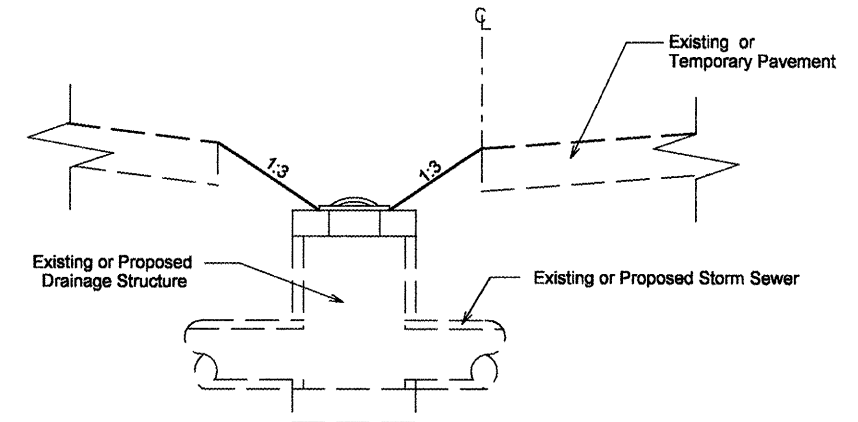
STA. 146+50.00 - 148+60.00 STA. 169+45.00 - 170+80.00  
 STA. 151+06.00 - 152+90.00 STA. 175+73.00 - 177+33.00  
 STA. 156+37.00 - 157+60.00 STA. 181+23.00 - 184+35.00  
 STA. 159+33.00 - 160+73.00 STA. 190+00.00 - 192+76.00  
 STA. 166+15.00 - 167+70.00



STA. 148+60.00 - 151+06.00 STA. 170+80.00 - 172+80.00  
 STA. 157+60.00 - 159+33.00 STA. 179+56.00 - 181+26.00  
 STA. 160+73.00 - 162+53.00 STA. 186+63.00 - 190+00.00  
 STA. 167+70.00 - 169+45.00

PRE-STAGE I

1. Construct Temporary Pavement Rt. Sta. 132+09.40 to Rt. Sta. 139+28.28 for Stage I traffic.
2. Traffic Control shall conform to standard 701602 and as shown on the plans.
3. One lane of Traffic and left turn lane shall be maintained in each directions at all times as shown on the plans.
4. Remove Existing Concrete and Earth Median and Pavement as shown on the plans.
5. Construct Temporary Pavement, Temporary Access to Side Streets and Temporary Drainage items for Stage I Traffic as shown on the plans.
6. Place Temporary Pavement Marking for Stage I Traffic.



TEMPORARY DRAINAGE DETAIL

FILE NAME = STAGETYP.DGN	USER NAME = crespole	DESIGNED -	REVISED -
		DRAWN -	REVISED -
	PLOT SCALE = 1/8" = 1' IN.	CHECKED -	REVISED -
	PLOT DATE = 12/11/2008	DATE -	REVISED -

STATE OF ILLINOIS  
DEPARTMENT OF TRANSPORTATION

PRE-STAGE I TYP. SECTION

SCALE: SHEET NO. OF SHEETS STA. TO STA.

F.A.P. RTE. 399	SECTION 36 R-8	COUNTY TAZEWELL	TOTAL SHEETS 429	SHEET NO. 71
CONTRACT NO. 68258				
FED. ROAD DIST. NO. [ILLINOIS] FED. AID PROJECT				