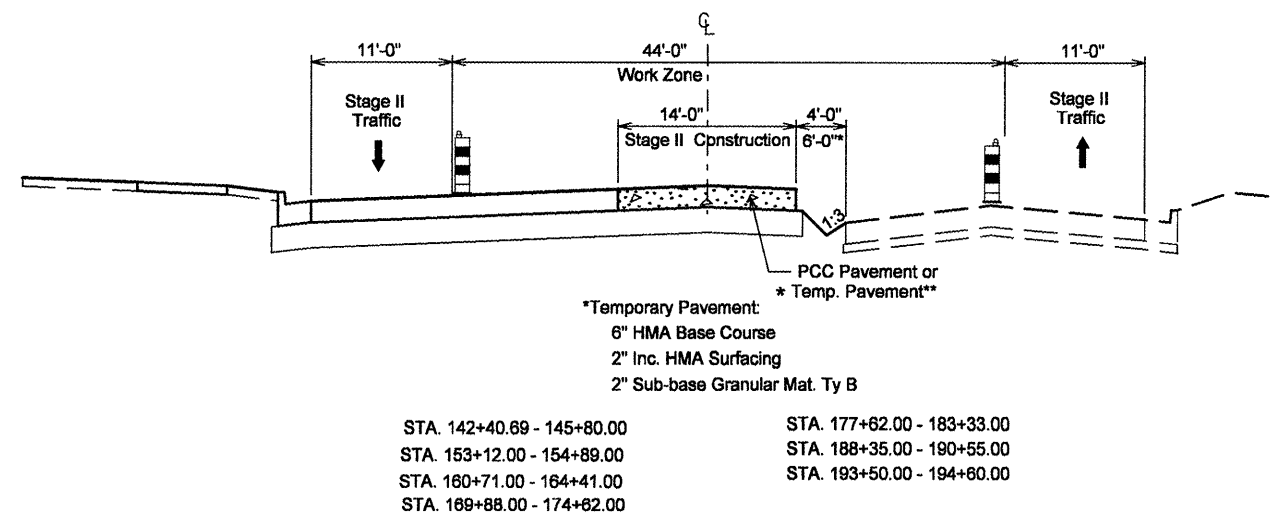
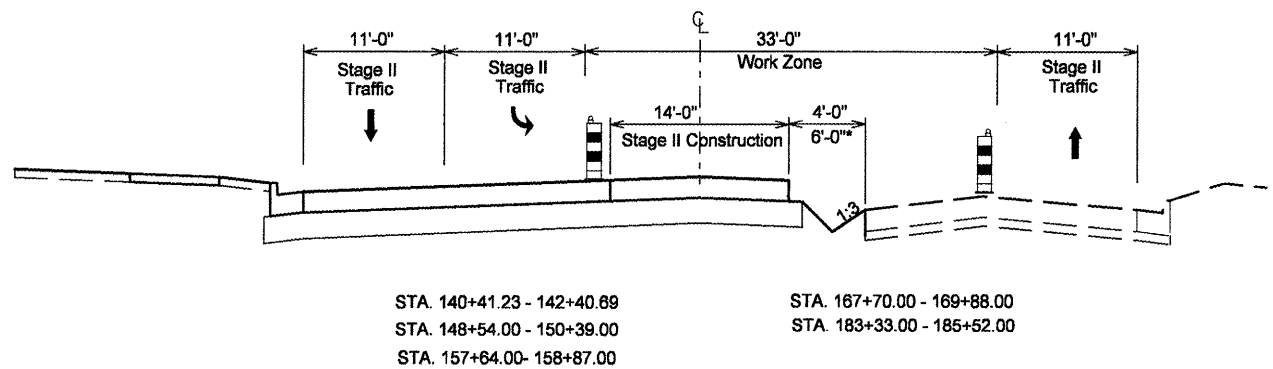


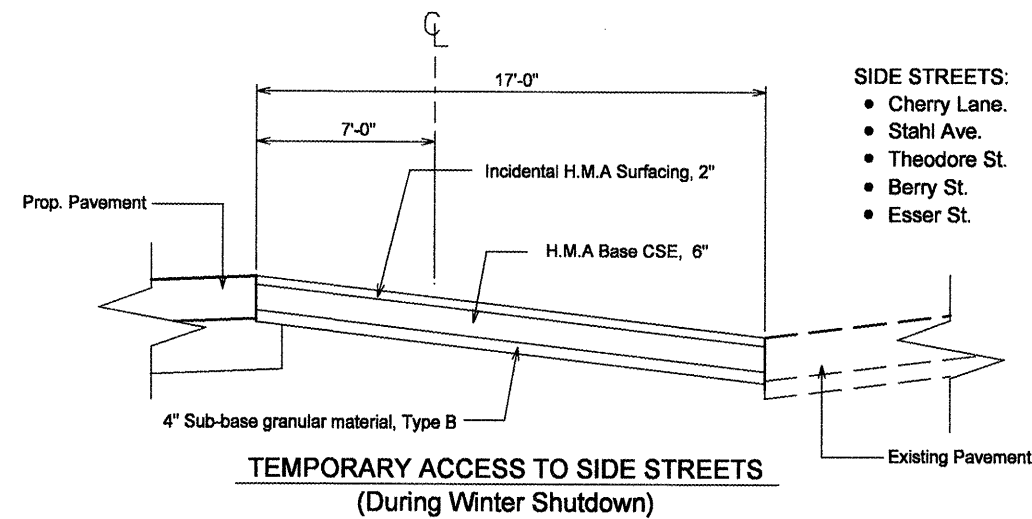
STAGE II

1. Traffic Control shall be per standard 701602 and as shown on the plans.
2. One lane of Traffic in each direction and left turn lane shall be maintained at all time as shown on the plans.
3. Remove Temporary Pavement from median and Construct Bi-directional lane and Proposed Drainage as shown on the plans.
4. Construct Temporary Pavement at island locations and Temporary Access to Side Streets for Stage III Traffic.
5. Place Temporary Pavement Marking for Stage III Traffic.
6. Resurface Lt. Sta. 194+60 to 196+55 for Stage III Traffic.



*Temporary Pavement:
 6" HMA Base Course
 2" Inc. HMA Surfacing
 2" Sub-base Granular Mat. Ty B
 * Temp. Pavement**

** See Stage II plans for Temp. Pavement Locations



FILE NAME = STAGETYP.DGN	USER NAME = crespole	DESIGNED -	REVISED -
		DRAWN -	REVISED -
		CHECKED -	REVISED -
		DATE -	REVISED -

**STATE OF ILLINOIS
 DEPARTMENT OF TRANSPORTATION**

STAGE II TYPICAL SECTIONS			
SCALE:	SHEET NO.	OF SHEETS	STA. TO STA.

F.A.P. RTE. 399	SECTION 36 R-8	COUNTY TAZEWELL	TOTAL SHEETS 429	SHEET NO. 73
CONTRACT NO. 68258				
FED. ROAD DIST. NO. 4 ILLINOIS FED. AID PROJECT				