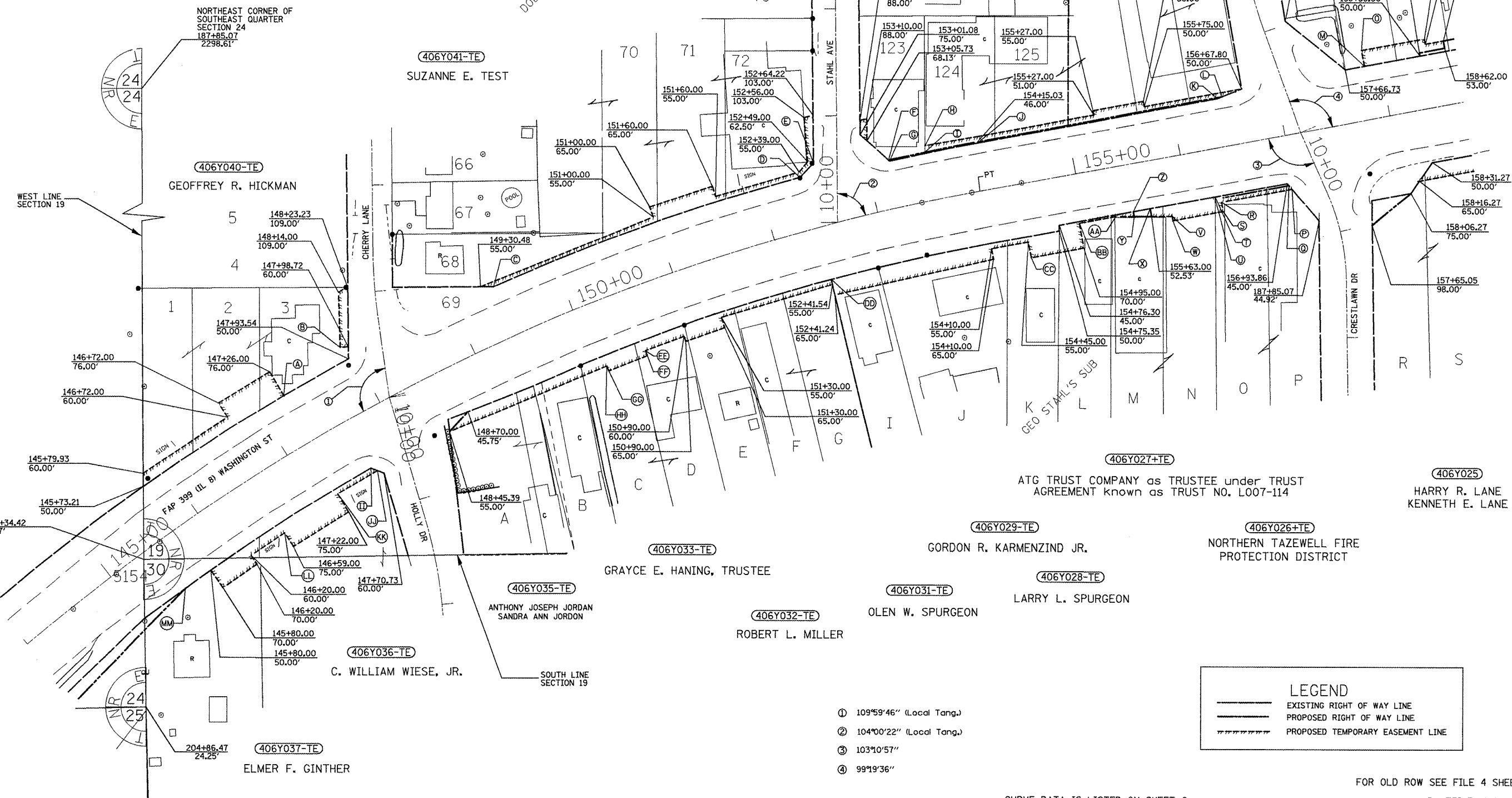


T 26 N R 4 W

T 26 N R 3 W

- Ⓐ 147+26.00
50.00'
- Ⓑ 147+92.00
63.00'
- Ⓒ 149+41.38
50.00'
- Ⓓ 152+38.47
50.00'
- Ⓔ 152+53.88
60.00'
- Ⓕ 153+20.98
46.00'
- Ⓖ 153+21.68
45.00'
- Ⓗ 153+56.21
51.87'
- Ⓙ 153+55.06
46.00'
- Ⓚ 154+15.03
45.00'
- Ⓛ 156+43.80
45.00'
- Ⓜ 156+48.60
46.00'
- Ⓝ 157+85.00
50.00'
- Ⓞ 157+85.00
50.00'
- Ⓟ 157+85.00
50.00'
- Ⓠ 157+85.00
50.00'
- Ⓡ 156+30.00
51.00'
- Ⓢ 156+30.00
60.00'
- Ⓣ 156+24.93
45.00'
- Ⓤ 156+24.58
47.00'
- Ⓥ 155+82.00
56.00'
- Ⓦ 155+82.00
60.00'
- Ⓧ 155+63.00
45.00'
- Ⓨ 155+47.00
49.61'
- Ⓩ 155+47.00
45.00'
- ⓐ 155+30.00
46.50'
- ⓑ 154+95.00
46.50'
- Ⓒ 154+45.00
70.00'
- Ⓓ 152+41.69
50.00'
- Ⓔ 150+50.00
60.00'
- Ⓕ 150+50.00
65.00'
- Ⓖ 150+10.00
65.00'
- Ⓗ 150+10.00
60.00'
- Ⓙ 147+62.03
50.00'
- Ⓚ 147+66.36
55.00'
- Ⓛ 147+22.00
55.00'
- Ⓜ 146+59.00
60.00'
- Ⓝ 145+50.00
50.00'



LEGEND

- EXISTING RIGHT OF WAY LINE
- PROPOSED RIGHT OF WAY LINE
- PROPOSED TEMPORARY EASEMENT LINE

- ① 109°59'46" (Local Tang.)
- ② 104°00'22" (Local Tang.)
- ③ 103°10'57"
- ④ 99°19'36"

CURVE DATA IS LISTED ON SHEET 6

FOR OLD ROW SEE FILE 4 SHEET(S) 20
PLATFILE: 019

FILE NAME: j18seg3.m32
jobrow.gpk
l8brow.lpf
Field Book No. 2870

USER NAME = crespole	DESIGNED - PCF	REVISED -
PLLOT SCALE = 280.0000' / IN.	DRAWN - MLA	REVISED -
PLLOT DATE = 12/8/2008	CHECKED - PCF	REVISED -
	DATE - 12-2008	REVISED -

**STATE OF ILLINOIS
DEPARTMENT OF TRANSPORTATION**

RIGHT OF WAY PLANS	
PROJECT	JOB NO. R-94-006-07
SHEET NO. 2 OF 6 SHEETS	STA. TO STA.
SCALE: 1"=100'	

F.A.P. RTE.	SECTION	COUNTY	TOTAL SHEETS	SHEET NO.
399	36R-8	TAZEWELL	429	136
(IL B)	030427-06		CONTRACT NO. 68258	
FED. ROAD DIST. NO.	ILLINOIS FED. AID PROJECT			