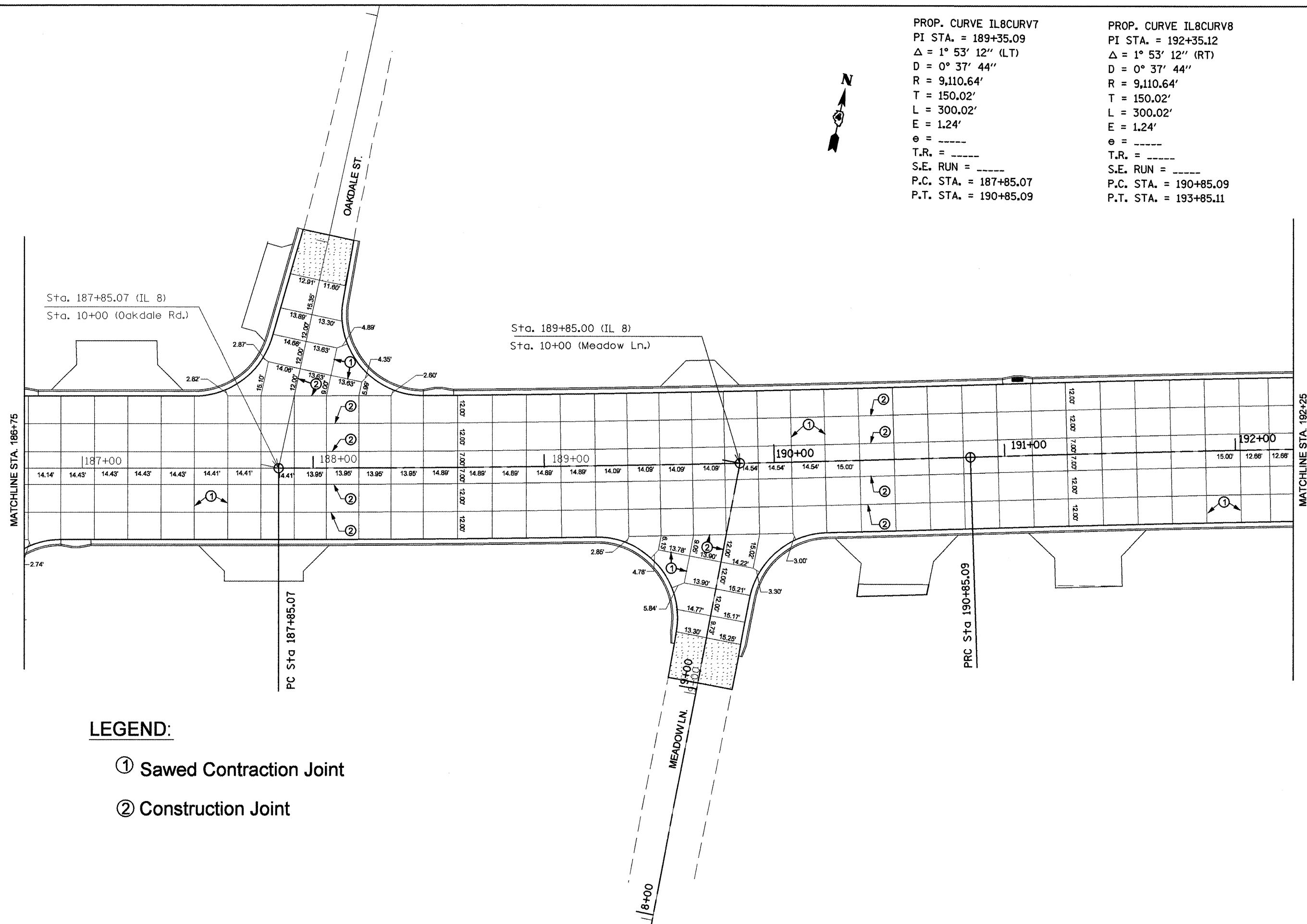


PROP. CURVE IL8CURV7  
 PI STA. = 189+35.09  
 $\Delta = 1^\circ 53' 12''$  (LT)  
 $D = 0^\circ 37' 44''$   
 $R = 9,110.64'$   
 $T = 150.02'$   
 $L = 300.02'$   
 $E = 1.24'$   
 $e = \text{-----}$   
 $T.R. = \text{-----}$   
 $S.E. RUN = \text{-----}$   
 $P.C. STA. = 187+85.07$   
 $P.T. STA. = 190+85.09$

PROP. CURVE IL8CURV8  
 PI STA. = 192+35.12  
 $\Delta = 1^\circ 53' 12''$  (RT)  
 $D = 0^\circ 37' 44''$   
 $R = 9,110.64'$   
 $T = 150.02'$   
 $L = 300.02'$   
 $E = 1.24'$   
 $e = \text{-----}$   
 $T.R. = \text{-----}$   
 $S.E. RUN = \text{-----}$   
 $P.C. STA. = 190+85.09$   
 $P.T. STA. = 193+85.11$



**LEGEND:**

- ① Sawed Contraction Joint
- ② Construction Joint

FILE NAME =  
JointSht.dgn

USER NAME = heggemd  
 PLOT SCALE = 40.0000' / IN.  
 PLOT DATE = 12/29/2008

DESIGNED -	REVISED -
DRAWN -	REVISED -
CHECKED -	REVISED -
DATE -	REVISED -

**STATE OF ILLINOIS  
 DEPARTMENT OF TRANSPORTATION**

**IL RTE 8 - PAVEMENT JOINT DETAILS**

SCALE: SHEET NO. OF SHEETS STA. TO STA.

F.A.P. RTE.	SECTION	COUNTY	TOTAL SHEETS	SHEET NO.
399	36 R-8	TAZEWELL	429	150
CONTRACT NO. 68258				
FED. ROAD DIST. NO. 4 [ILLINOIS] FED. AID PROJECT				