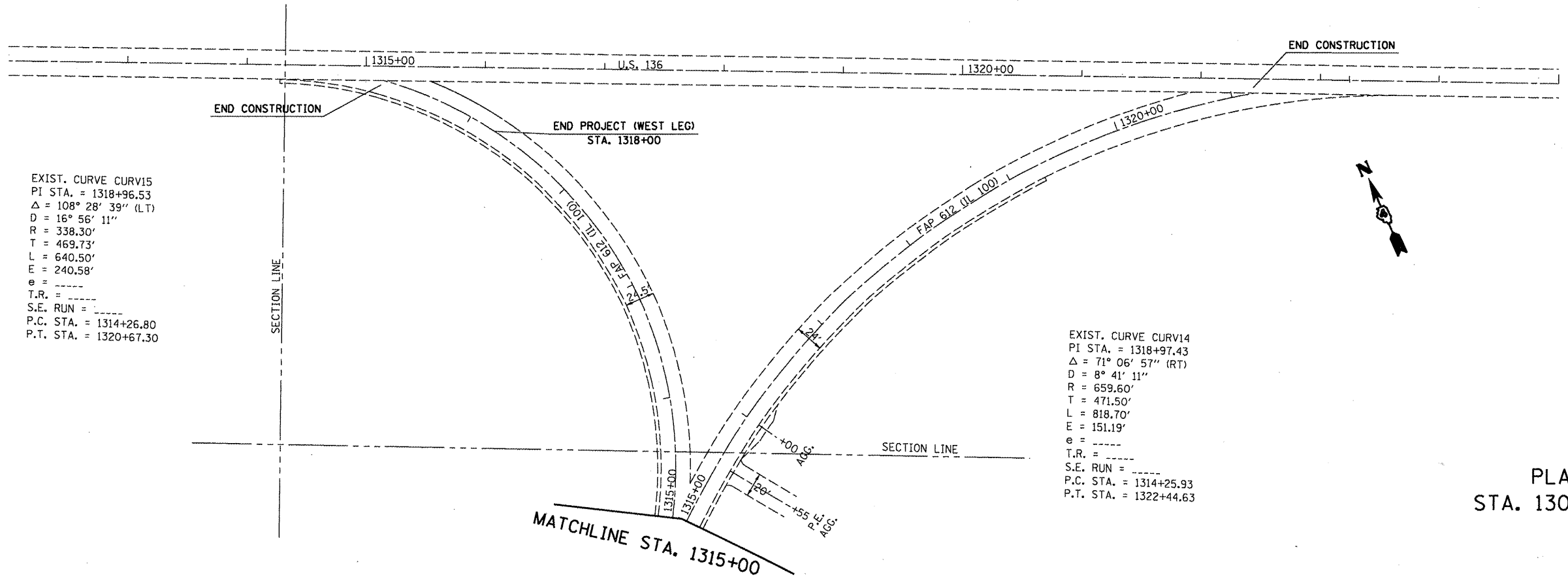


EXIST. CURVE CURV13
 PI STA. = 1305+45.83
 $\Delta = 31^\circ 37' 42''$ (LT)
 $D = 3^\circ 11' 59''$
 $R = 1,790.70'$
 $T = 507.20'$
 $L = 988.50'$
 $E = 70.44'$
 $e =$
 T.R. =
 S.E. RUN =
 P.C. STA. = 1300+38.63
 P.T. STA. = 1310+27.13



EXIST. CURVE CURV15
 PI STA. = 1318+96.53
 $\Delta = 108^\circ 28' 39''$ (LT)
 $D = 16^\circ 56' 11''$
 $R = 338.30'$
 $T = 469.73'$
 $L = 640.50'$
 $E = 240.58'$
 $e =$
 T.R. =
 S.E. RUN =
 P.C. STA. = 1314+26.80
 P.T. STA. = 1320+67.30

EXIST. CURVE CURV14
 PI STA. = 1318+97.43
 $\Delta = 71^\circ 06' 57''$ (RT)
 $D = 8^\circ 41' 11''$
 $R = 659.60'$
 $T = 471.50'$
 $L = 818.70'$
 $E = 151.19'$
 $e =$
 T.R. =
 S.E. RUN =
 P.C. STA. = 1314+25.93
 P.T. STA. = 1322+44.63

PLAN SHEET
 STA. 1301+00 - E.O.P.

FILE NAME = plan01.dgn	USER NAME = oppenzeller.jj	DESIGNED - DRAWN - CHECKED - DATE -	REVISED - REVISED - REVISED - REVISED -	STATE OF ILLINOIS DEPARTMENT OF TRANSPORTATION	PLAN SHEET	F.A.P. RTE. 612	SECTION (109)	COUNTY FULTON	TOTAL SHEETS 19	SHEET NO. 16
						SCALE:	SHEET NO. OF SHEETS STA. TO STA.	CONTRACT NO. 68842 ILLINOIS FED. AID PROJECT		