

NOTES

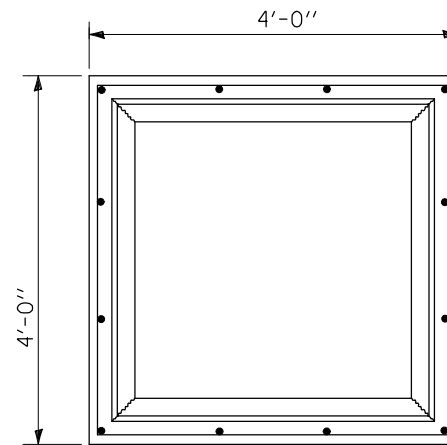
EXPANSION BOLTS SHALL EXTEND A MINIMUM 9" INTO THE EXISTING AND PROPOSED CONCRETE

ALL WORK AND MATERIALS SHALL BE IN ACCORDANCE WITH APPLICABLE PORTIONS OF SECTION 602.

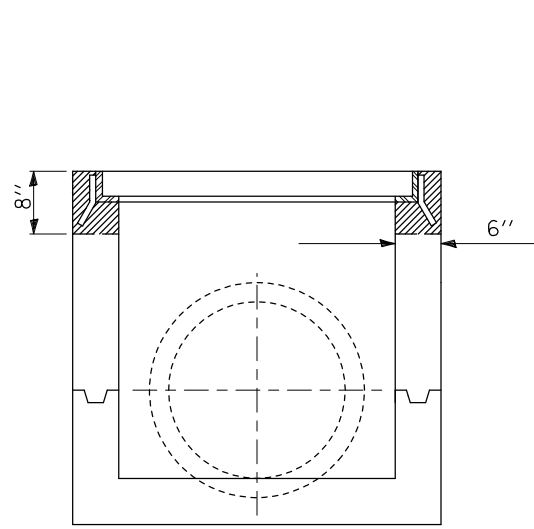
THIS WORK WILL BE PAID FOR AT THE CONTRACT UNIT PRICE EACH FOR "INLETS BOXES TO BE ADJUSTED (SPECIAL)" WHICH SHALL INCLUDE ALL LABOR, EQUIPMENT & MATERIAL NECESSARY TO COMPLETE THE WORK.

ESTIMATE QUANTITIES:

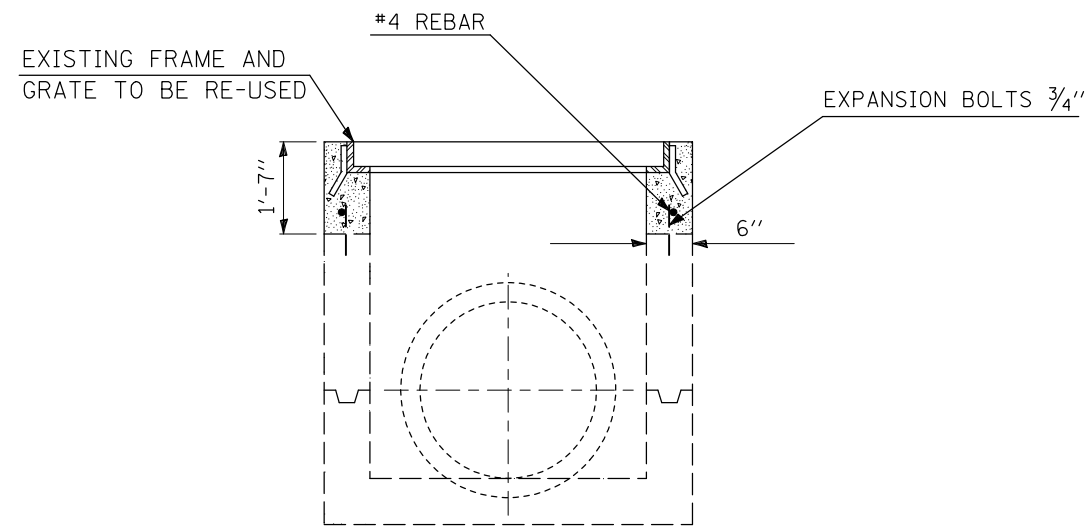
CONCRETE REMOVAL 0.13 CU YD
 CLASS S.I. CONCRETE 0.37 CU YD
 REINFORCEMENT BARS 9.4 LBS
 EXPANSION BOLTS 12.0 EACH





PLAN
 (Grating omitted for clarity)



EXISTING



PROPOSED

 CONCRETE REMOVAL
 CLASS S.I. CONCRETE

FILE NAME =	USER NAME = ceorlockjd	DESIGNED -	REVISED -
ce:\pw\work\PWIDOT\CEARLOCKJD\0101465\070744-sht-details.dgn		DRAWN -	REVISED -
PLOT SCALE = 40.0000 ' / IN.		CHECKED -	REVISED -
PLOT DATE = 12/11/2008		DATE -	REVISED -

**STATE OF ILLINOIS
 DEPARTMENT OF TRANSPORTATION**

INLET BOXES TO BE ADJUSTED (SPECIAL)

SCALE: SHEET NO. OF SHEETS STA. TO STA.

F.A.P. RTE.	SECTION	COUNTY	TOTAL SHEETS	SHEET NO.
74	D5SAFETY-1	MCLEAN	80	25
CONTRACT NO. 70744				
FED. ROAD DIST. NO. ILLINOIS FED. AID PROJECT				