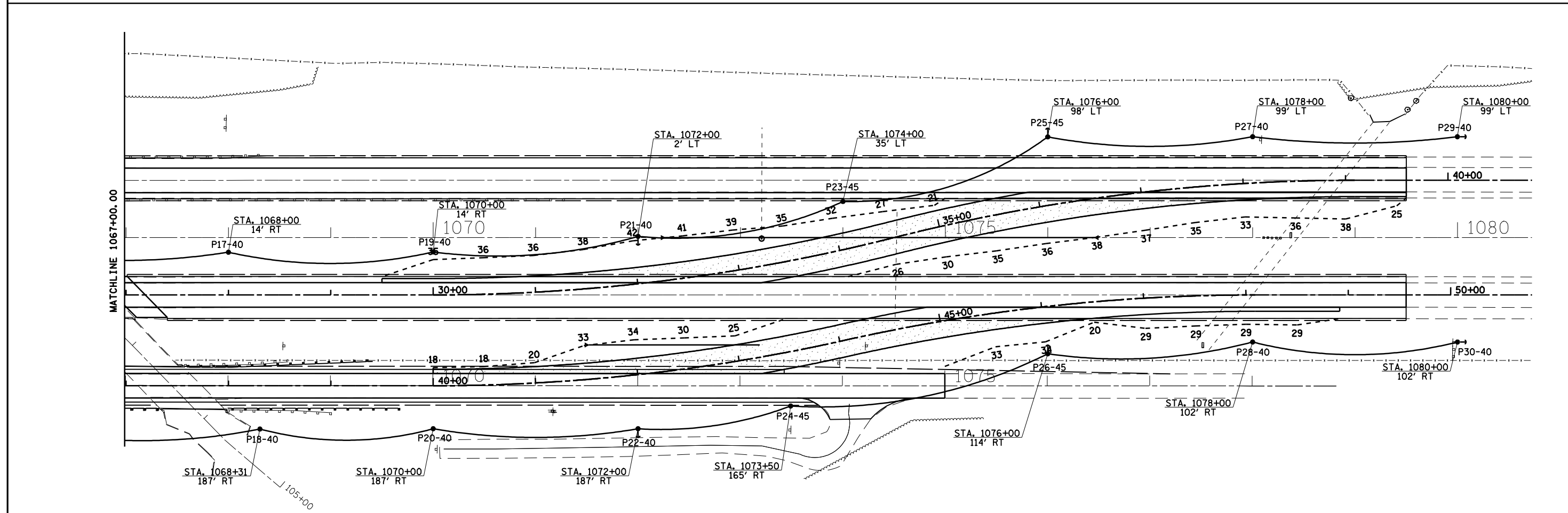
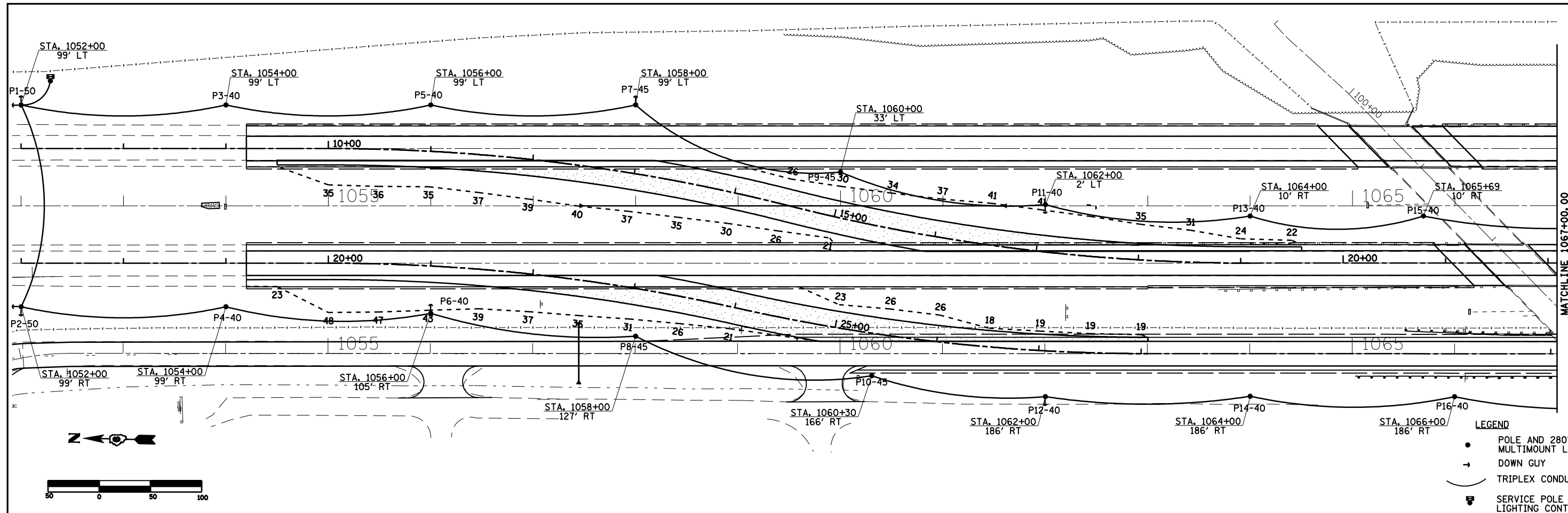


DECATUR, ILLINOIS

ENGINEERS - CONSULTANTS

BLANK, WESSELINK, COOK & ASSOCIATES



FILE NAME =	USER NAME = laughlinr1	DESIGNED -	REVISED -	<b>STATE OF ILLINOIS DEPARTMENT OF TRANSPORTATION</b>	<b>ROADWAY LIGHTING PLAN</b>		F.A. RTE.	SECTION	COUNTY	TOTAL SHEETS	SHEET NO.
et:\pwork\PWIDOT\LAUGHLINRL\0110282\L	ghtang Plan.dgn	DRAWN -	REVISED -				68-4B-1 & 111BR	MONTEGOMERY	145	30	
	PLOT SCALE = 100.00' / IN.	CHECKED -	REVISED -		FAI 55 & FAS 1769	CONTRACT NO. 72A63					
	PLOT DATE = Dec-03-2008 07:34:07AM	DATE -	REVISED -		FED. ROAD DIST. NO.	ILLINOIS	FED. AID PROJECT				

SCALE: SHEET NO. 5 OF 5 SHEETS STA. TO STA.