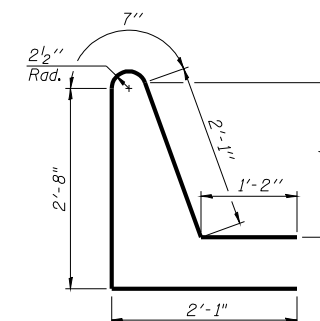
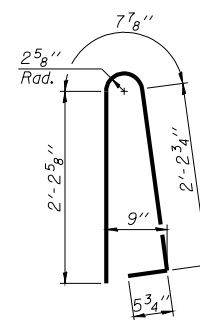
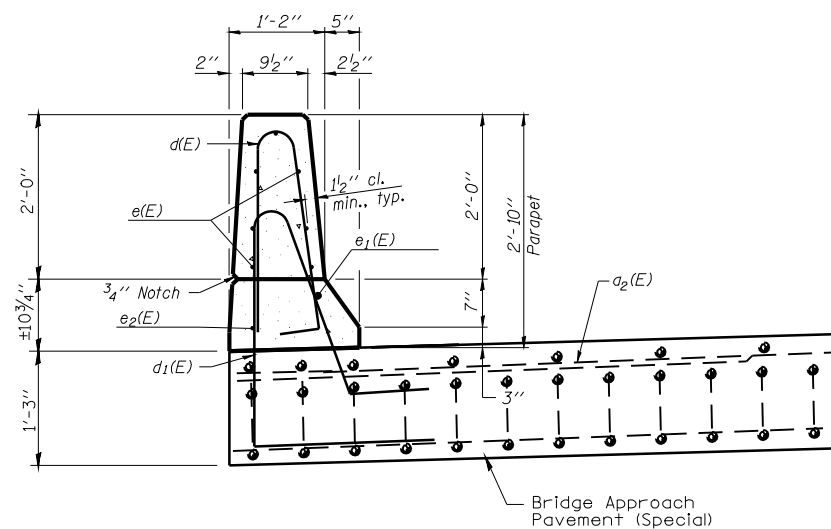
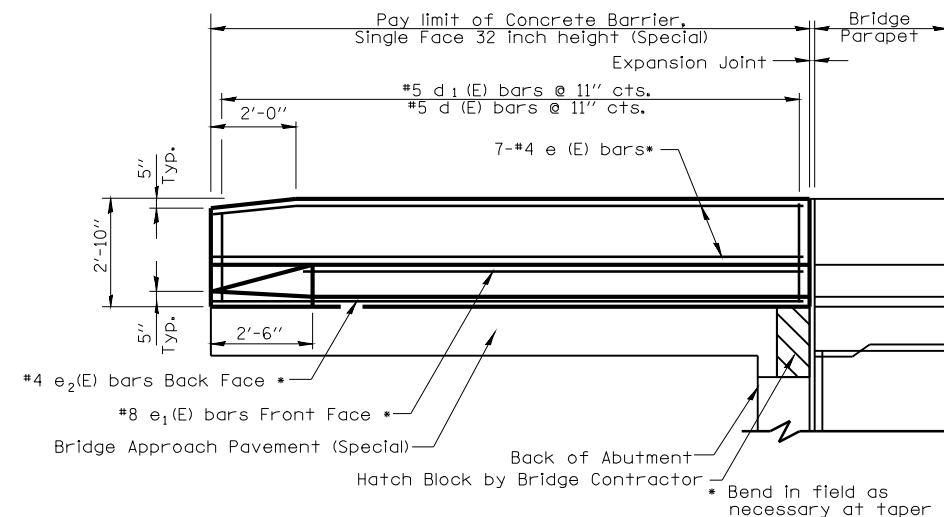
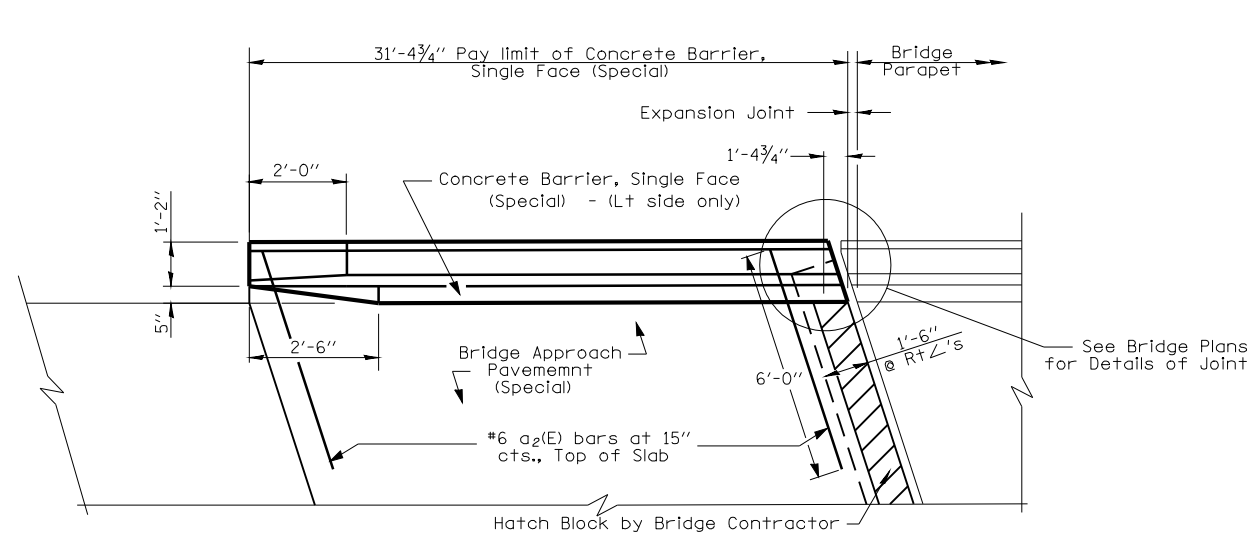


CONCRETE BARRIER, SINGLE FACE, (SPECIAL)



Notes

1. Reinforcement bars designated (E) shall be epoxy coated.
2. Reinforcement bars shall conform to the requirements of ASTM A706 Grade 60. See Special Provisions.
3. Protective Coat shall be applied to Concrete Barrier in accordance with Section 420 of the Standard Specifications. Cost of Protective Coat is included in Concrete Barrier Single Face (Special).
4. Slipforming of Barrier is not allowed.
5. Concrete shall be in accordance with Concrete Superstructure in Section 503 of the Standard Specifications.

FILE NAME =	USER NAME = laughlinr1	DESIGNED -	REVISED -	STATE OF ILLINOIS DEPARTMENT OF TRANSPORTATION	SPECIAL CONCRETE BARRIER, SINGLE FACE	F.A. RTE.	SECTION	COUNTY	TOTAL SHEETS	SHEET NO.
et:\pwork\pwidot\LAUGHLINRL\0110282\roadway details.dgn		DRAWN -	REVISED -			• 68-4B-1 & 11BR	MONTGOMERY	145	38	
PLOT SCALE = 40.0000' / IN.		CHECKED -	REVISED -			• FAI 55 & FAS 1769	CONTRACT NO. 72A63			
PLOT DATE = Jan-22-2009 12:54:18PM		DATE -	REVISED -			FED. ROAD DIST. NO.	ILLINOIS FED. AID PROJECT			
				SCALE:	SHEET NO. OF SHEETS	STA.	TO STA.			