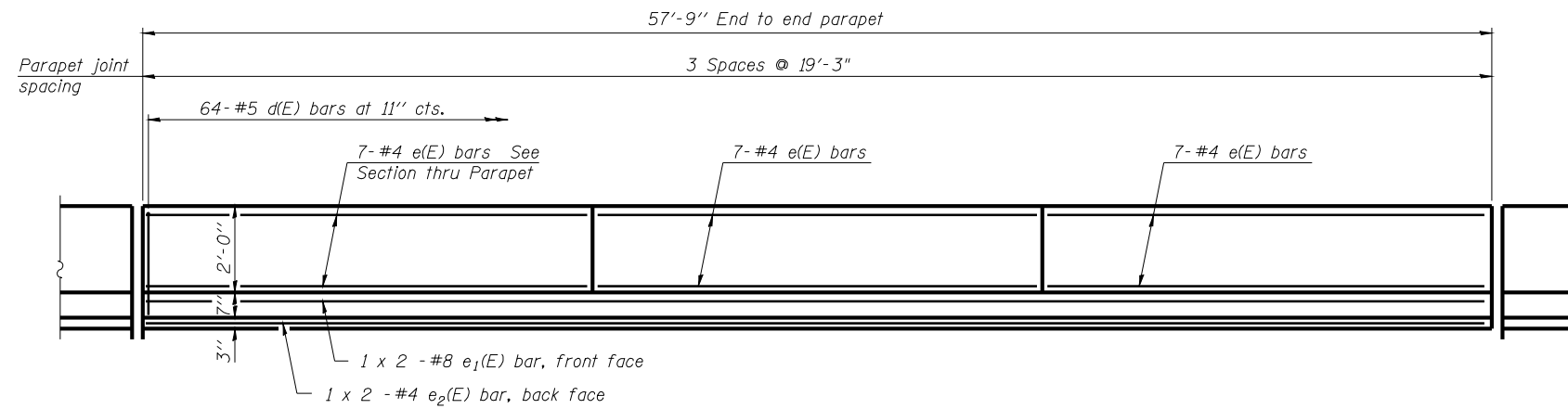
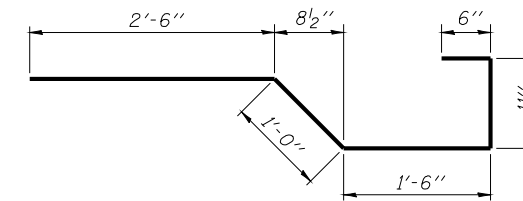


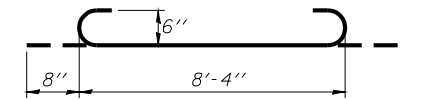
Contract #72C32



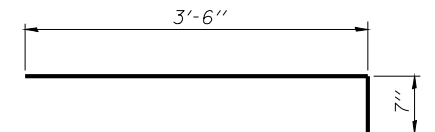
INSIDE ELEVATION OF PARAPET



BAR x(E)



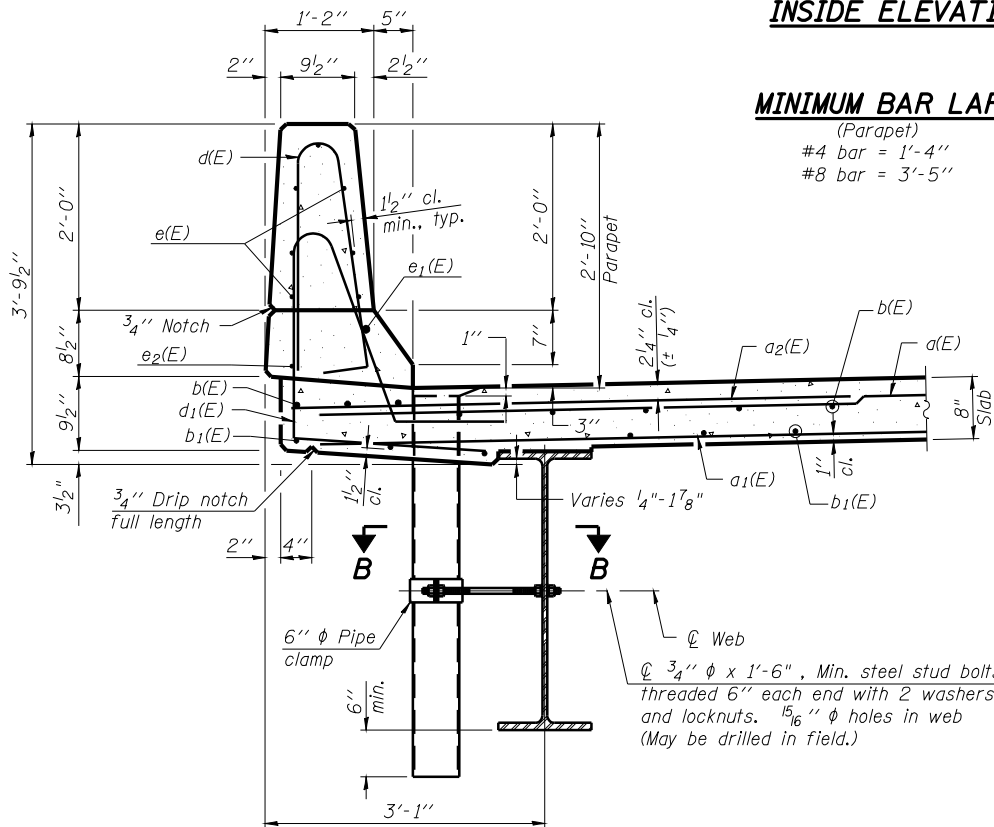
a3(E) BAR



BAR x1(E)

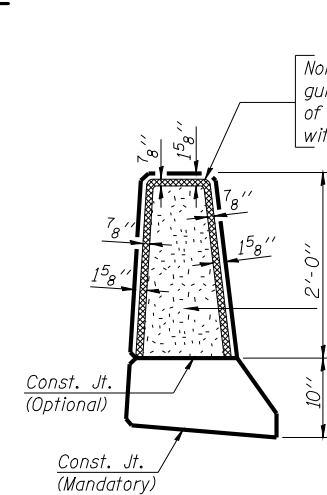
MINIMUM BAR LAP

(Parapet)
#4 bar = 1'-4"
#8 bar = 3'-5"



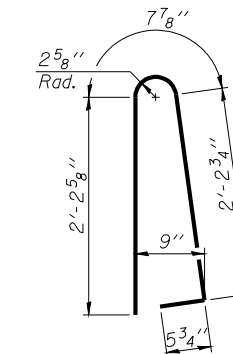
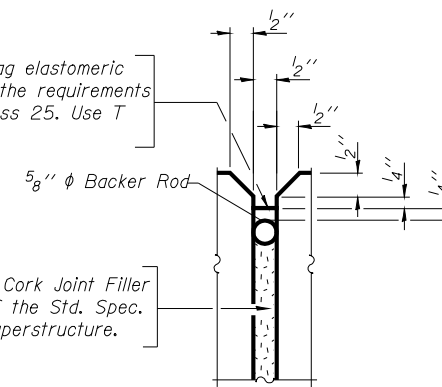
SECTION THRU PARAPET

Non-staining gray one component non-sag elastomeric gun grade polyurethane sealant meeting the requirements of ASTM C-920, Type S, Grade NS, Class 25. Use T with a 5/8" backer rod.

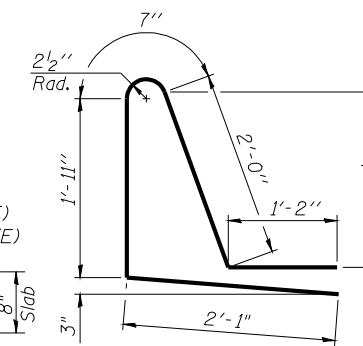


PARAPET JOINT DETAILS

1/2" Preformed Self-Expanding Cork Joint Filler according to Article 1051.07 of the Std. Spec. Cost included with Concrete Superstructure.



BAR d(E)

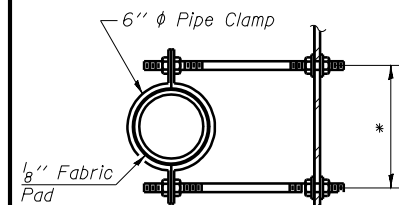


BAR d1(E)

SUPERSTRUCTURE BILL OF MATERIAL (BOTH STRUCTURES)

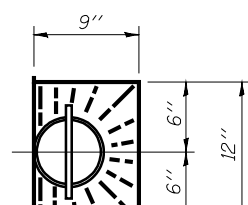
Bar	No.	Size	Length	Shape
a(E)	152	#5	42'-2"	—
a1(E)	136	#5	42'-1"	—
a2(E)	156	#6	6'-0"	—
a3(E)	72	#6	9'-8"	U
a4(E)	8	#6	27'-0"	—
a5(E)	32	#6	31'-0"	—
b(E)	184	#5	29'-7"	—
b1(E)	216	#5	20'-3"	—
d(E)	256	#5	5'-7"	—
d1(E)	240	#5	7'-9"	—
e(E)	84	#4	18'-11"	—
e1(E)	8	#8	30'-6"	—
e2(E)	8	#4	29'-6"	—
x(E)	160	#5	6'-5"	—
x1(E)	176	#5	4'-1"	—
Reinforcement Bars, Epoxy Coated			Pound	34,290
Concrete Superstructure			Cu. Yds.	154.9
Floor Drains			Each	12
Bridge Deck Grooving			Sq. Yd.	488
Protective Coat			Sq. Yd.	610

Bars indicated thus 1 x 2 - #5 etc. indicates 1 line of bars with 2 lengths per line.

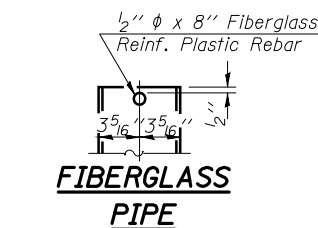


SECTION B-B

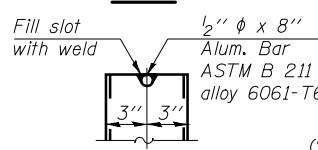
* Dimension as required by Pipe Clamp



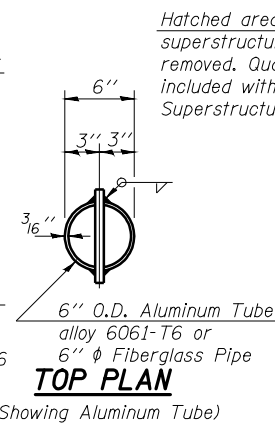
TOP PLAN



FIBERGLASS PIPE



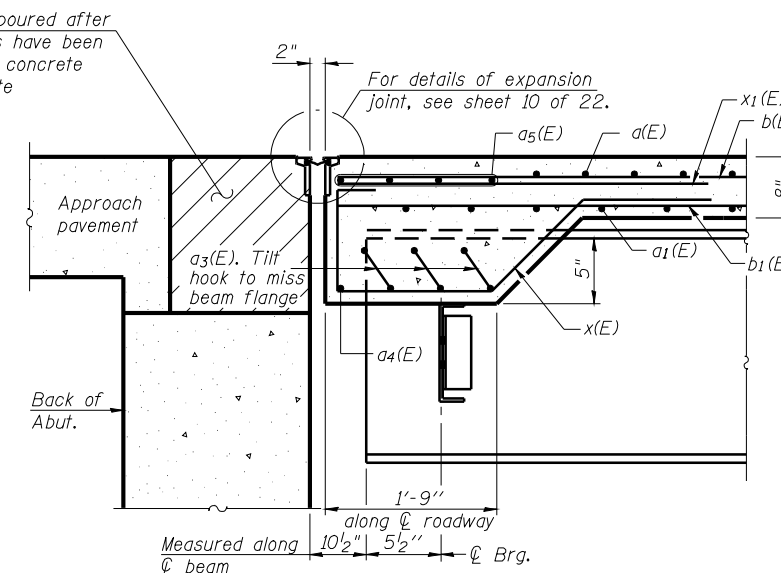
ALUMINUM TUBE



TOP PLAN

(Showing Aluminum Tube)

Hatched area to be poured after superstructure forms have been removed. Quantity of concrete included with Concrete Superstructure.



SECTION A-A

Notes: Drains shall be located clear of all diaphragms. The floor drains need not be painted. Fiberglass pipe shall conform to ASTM D 2996, with short-time rupture strength hoop tensile stress of 30,000 p.s.i. minimum.

ILLINOIS DEPARTMENT OF TRANSPORTATION

**SUPERSTRUCTURE DETAILS
I 55 OVER MACOUPIN CREEK
F.A.I. ROUTE 55 - SEC. (68-4)F
MONTGOMERY COUNTY
STATION 1066+03.18
STRUCTURE NO. 068-0038 N.B.
STRUCTURE NO. 068-0039 S.B.**

DATE: 04-08
REVISED:
DRAWN BY: MLO
CHECKED BY: PBB