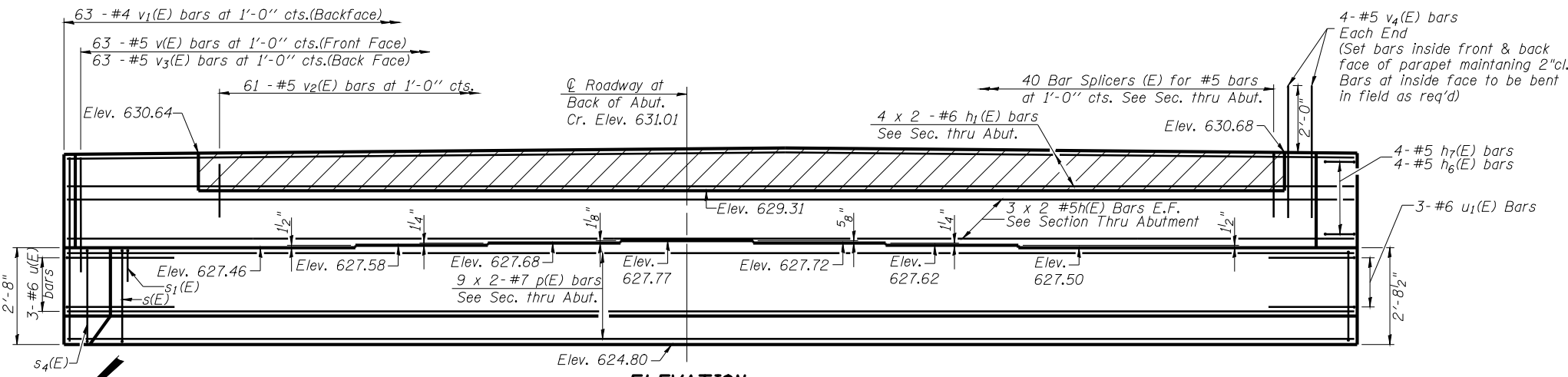
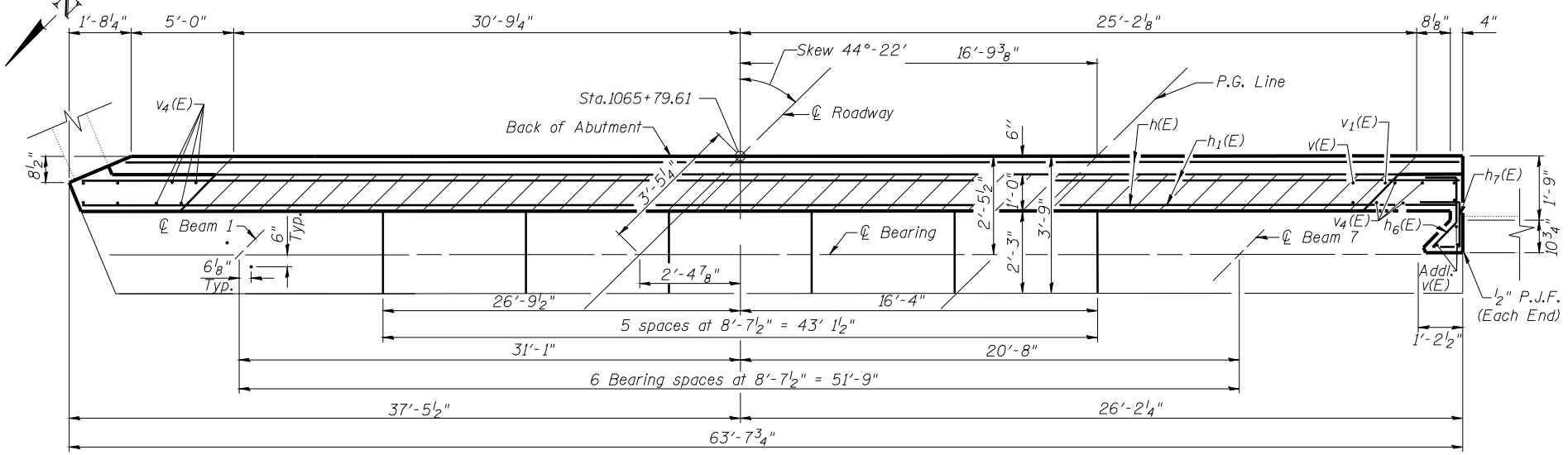


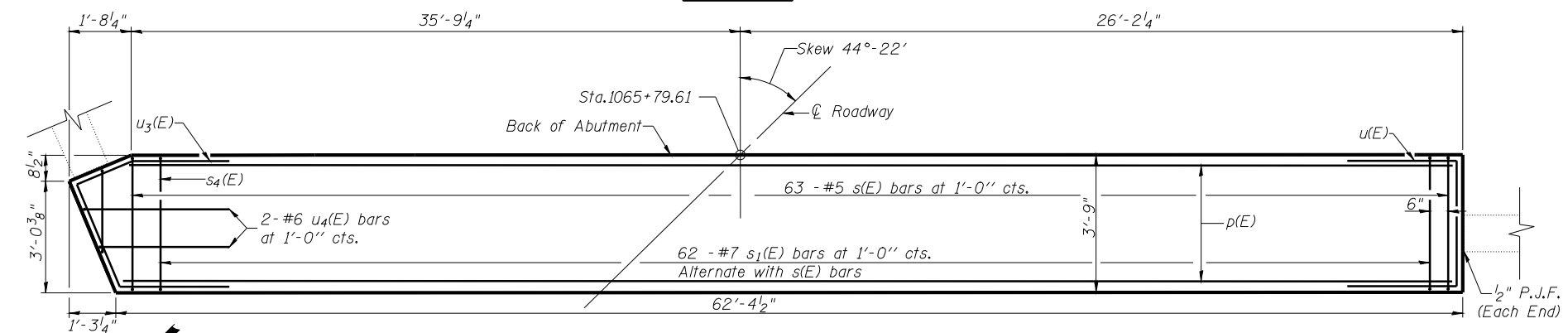
Contract #72C32



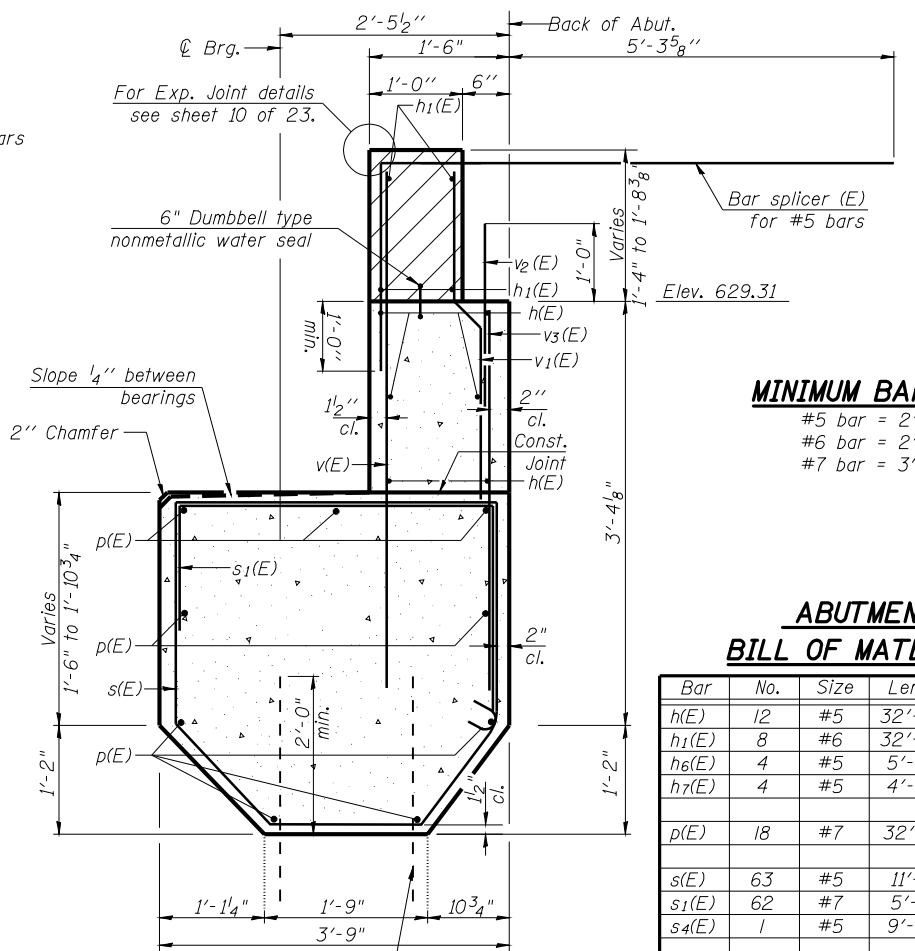
ELEVATION



TOP VIEW



PLAN-CAP



SEC. THRU ABUT.

MINIMUM BAR LAP

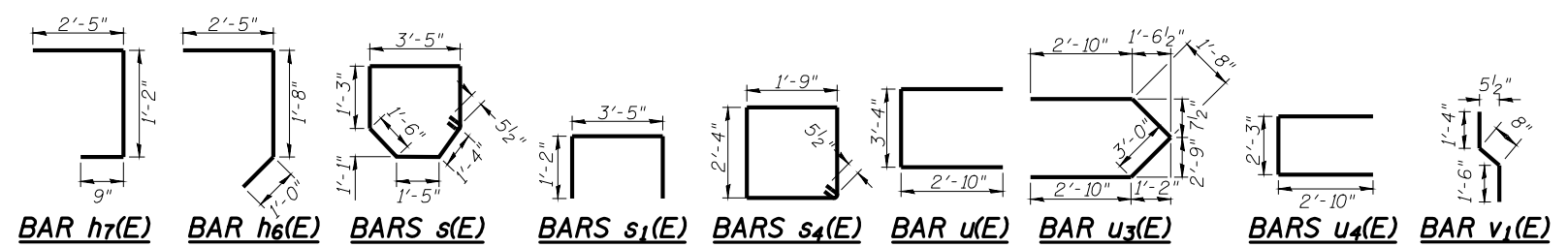
- #5 bar = 2'-5"
- #6 bar = 2'-10"
- #7 bar = 3'-10"

ABUTMENT BILL OF MATERIAL

Bar	No.	Size	Length	Shape
h(E)	12	#5	32'-7"	
h1(E)	8	#6	32'-10"	
h6(E)	4	#5	5'-1"	
h7(E)	4	#5	4'-4"	
p(E)	18	#7	32'-11"	
s(E)	63	#5	11'-1"	
s1(E)	62	#7	5'-9"	
s4(E)	1	#5	9'-1"	
u(E)	3	#6	9'-0"	
u3(E)	3	#6	10'-4"	
u4(E)	2	#6	7'-11"	
v(E)	66	#5	5'-4"	
v1(E)	63	#4	3'-6"	
v2(E)	61	#5	2'-0"	
v3(E)	63	#5	3'-1"	
v4(E)	8	#5	4'-0"	
Structure Excavation		Cu. Yd.	46	
Concrete Structures		Cu. Yd.	35.0	
Reinforcement Bars, Epoxy Coated		Pound	4530	
Bar Splicers		Each	40	
Concrete Sealer		Sq. Ft.	578	

Existing reinforcement shall be cleaned and incorporated into the new construction. Cost included with Concrete Removal.

For details of Bar Splicers, see sheet 13 of 23. Bars indicated thus 9x2-#7 etc. indicates 9 lines of bars with 2 lengths per line.



Notes:
Hatched area to be poured after superstructure false work has been removed. Quantity of concrete included with Concrete Superstructure.
Space reinforcement in cap to miss anchor bolts. Pour steps monolithically with cap.
All exposed corners shall have a 3/4" chamfer (typ.).
The bar splicer is to be placed parallel to the approach pavement reinforcement.

ILLINOIS DEPARTMENT OF TRANSPORTATION

NORTHBOUND SOUTH ABUTMENT DETAILS
I 55 OVER MACOUPIN CREEK
F.A.I. ROUTE 55 - SEC. (68-4)F
MONTGOMERY COUNTY
STATION 1066+03.18
STRUCTURE NO. 068-0038 N.B.
STRUCTURE NO. 068-0039 S.B.

DATE: 04-08
REVISED:
DRAWN BY: MLO
CHECKED BY: PBB