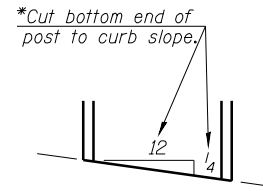


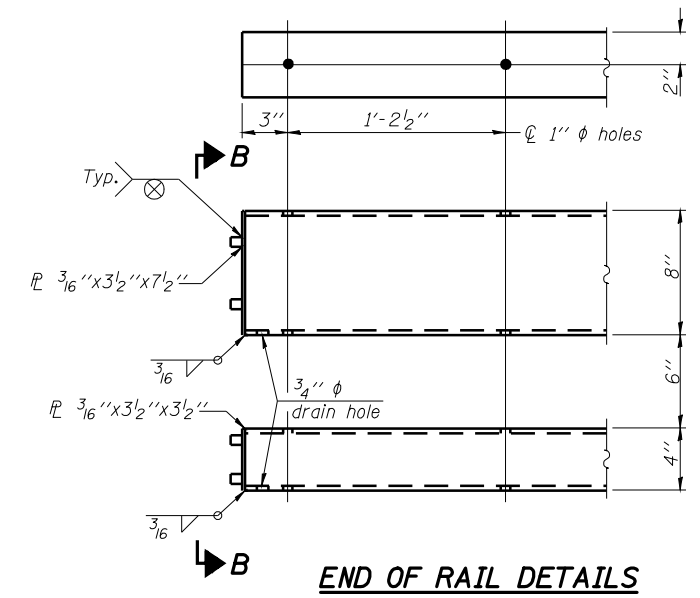
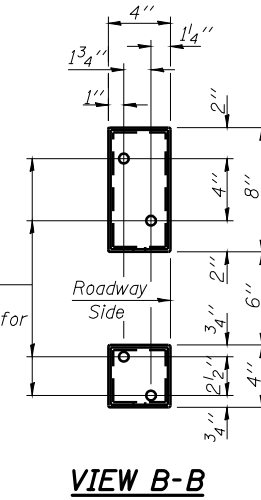
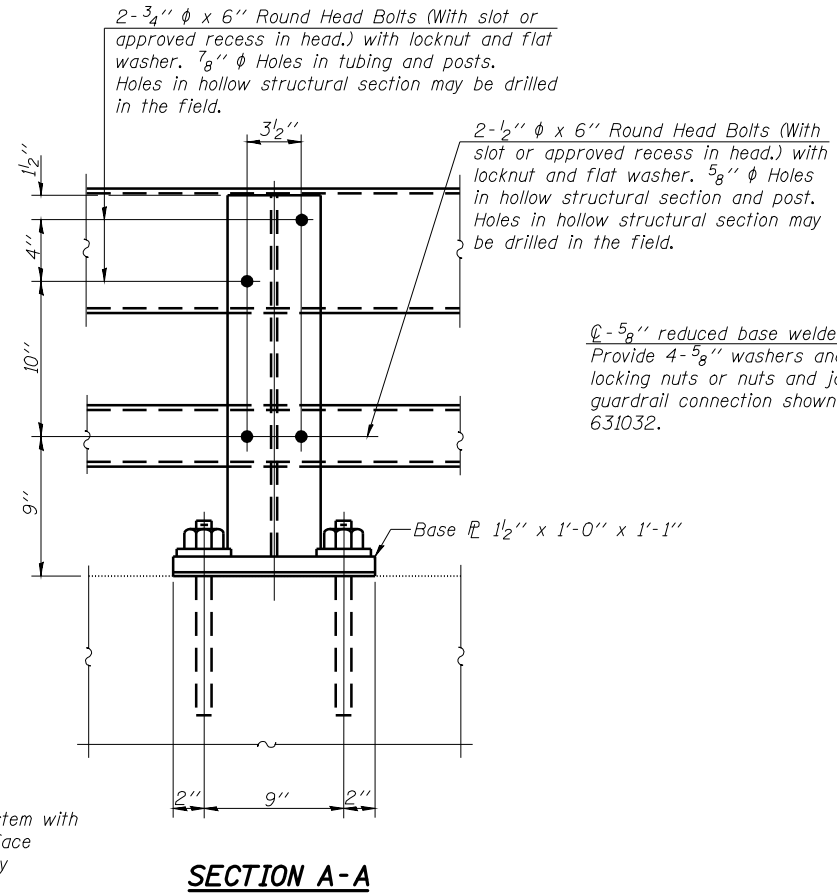
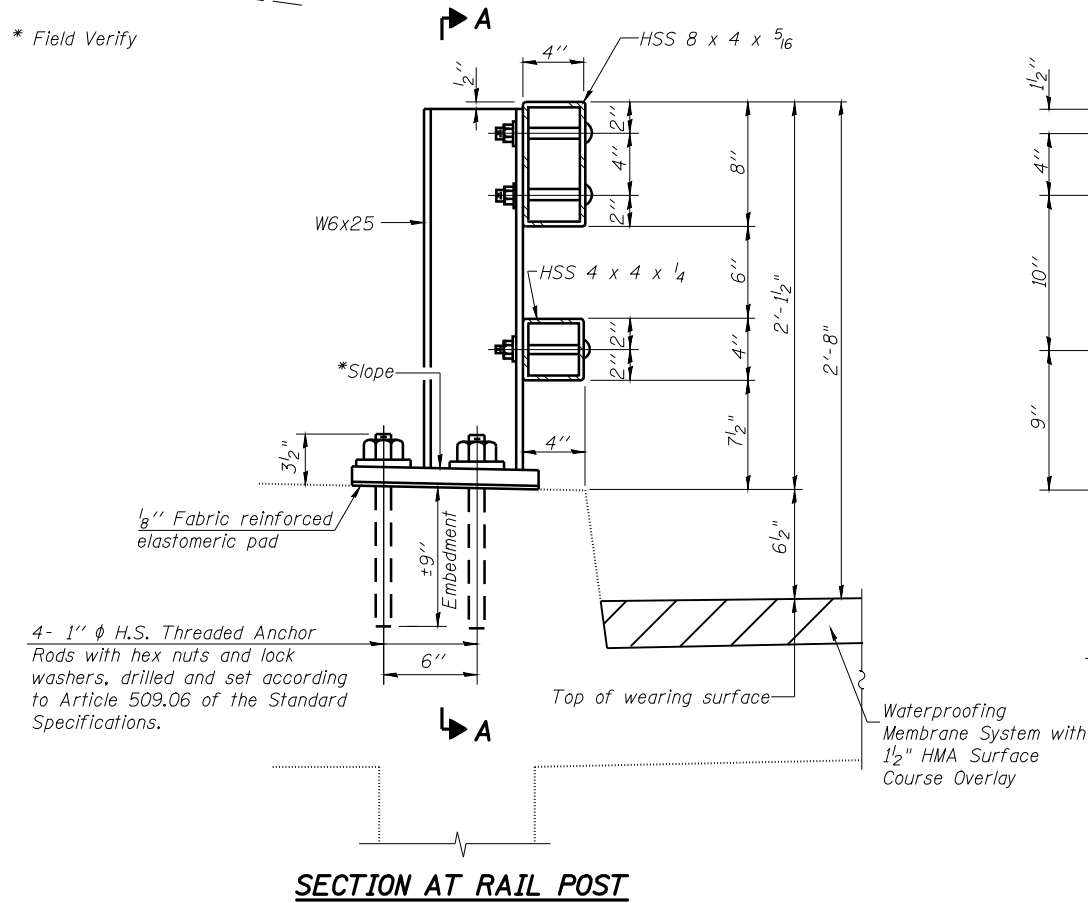
STATE OF ILLINOIS
DEPARTMENT OF TRANSPORTATION

ROUTE NO.	SECTION	COUNTY	TOTAL SHEETS	SHEET NO.	SHEET NO. 3 3 SHEETS
F.A.S. 1769	111B-2	MONTGOMERY	145	66	
FED. ROAD DIST. NO. 7	ILLINOIS	FED. AID PROJECT			

Contract #72A63

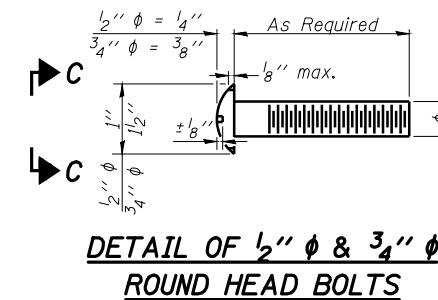
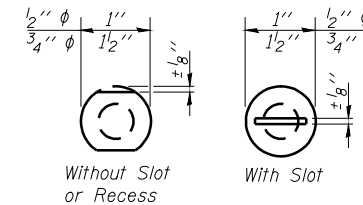


* Field Verify



Notes:

All field drilled holes shall be coated with an approved zinc rich paint before erection.
Posts shall not be located closer than 1'-3" to an existing bridge expansion joint or end of bridge.
Steel Bridge Rail expansion joint shall be provided between any two (2) posts which span a bridge expansion joint. Bolts located at expansion joint shall be provided with locknuts and shall be tightened only to a point that will allow railing movement.
Provide one 1/8" and two 1/16" steel shims for 25% of the posts. Shims shall be similar to base plates in size and holes.
All steel rail elements shall be galvanized according to Article 509.05 of the Standard Specifications.



SPLICE DIMENSIONS

T	D	A	B	C	E
≤ 4"	2 1/2"	1'-8"	2"	4"	2 1/2"
> 4" ≤ 6 1/2"	3 3/4"	2'-0"	2 1/2"	5 1/2"	3 1/2"
> 6 1/2" ≤ 9"	5"	2'-4"	3 1/2"	6 1/2"	9"
> 9" ≤ 13"	7"	2'-10"	4 1/2"	8 1/2"	11"
Rail Splice	1/4"	1'-8"	2"	4"	—

T=Total movement at expansion joint as shown on the design plans.

BILL OF MATERIAL

Item	Unit	Quantity
Steel Railing (Special)	Foot	130

ILLINOIS DEPARTMENT OF TRANSPORTATION
STEEL RAILING DETAILS
W. FR. IL 55 OVER MACOUPIN CREEK
F.A.S. 1769 (FR I-55) - SEC. 111B-2
MONTGOMERY COUNTY
STATION 1067+45.30
STRUCTURE NO. 068-0054

DATE: 02-08
REVISED:

DRAWN BY: MLO
CHECKED BY: PBB

