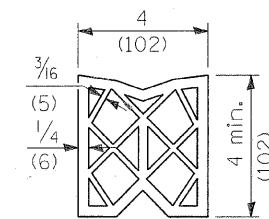
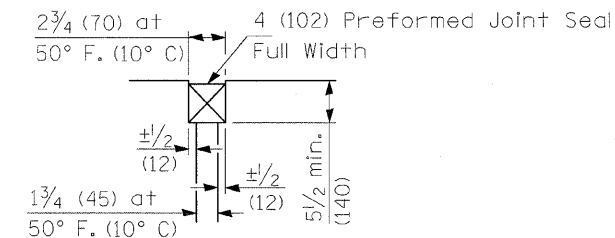


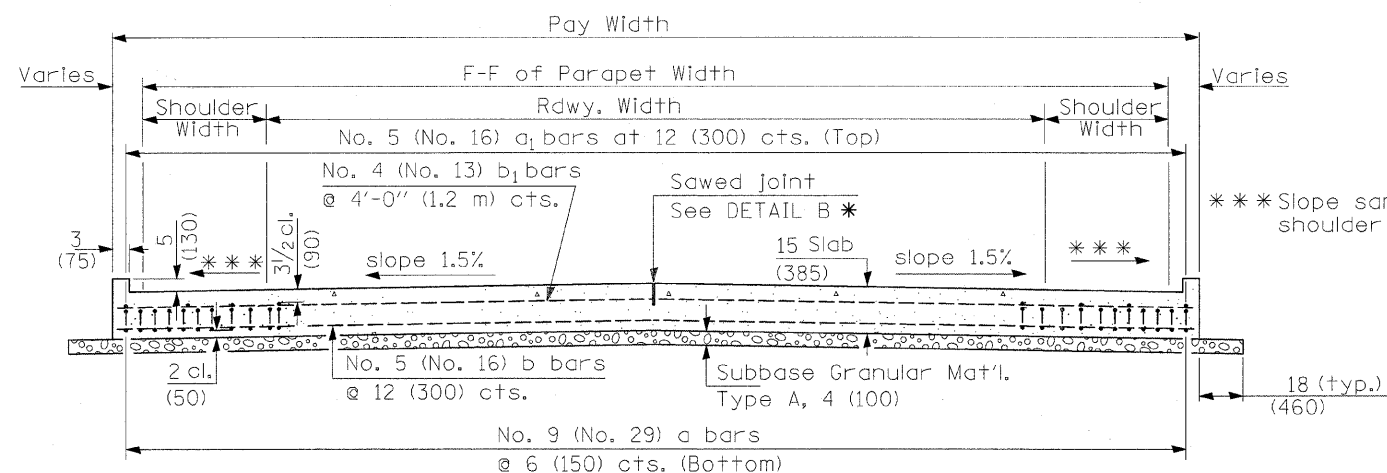
① Stagger No. 9 (No. 29) a bars as shown on plan - full width



PREFORMED JOINT SEAL



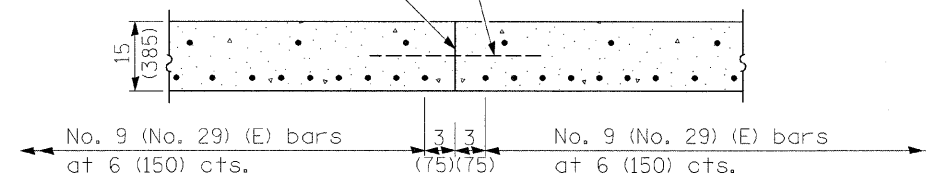
DETAIL A



SECTION D-D

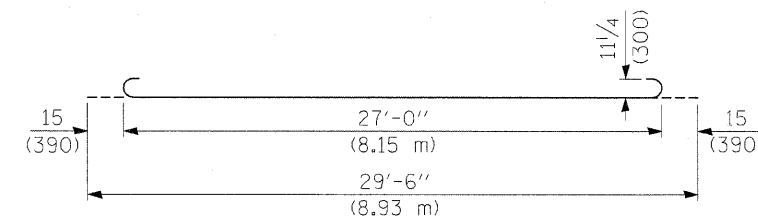
(See Plan for Dimensions not shown)

Longitudinal Construction Joint in accordance with details shown on Standard 420001.

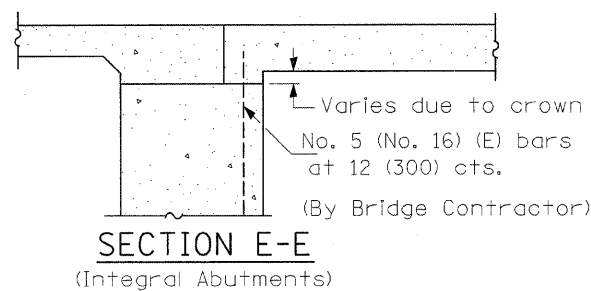


OPTIONAL LONGITUDINAL CONSTRUCTION JOINT

As approved by the Engineer, the Contractor may elect to reduce the widths of pour by use of the Optional Longitudinal Construction Joint shown. Joints shall be located at the edge of a traffic lane.

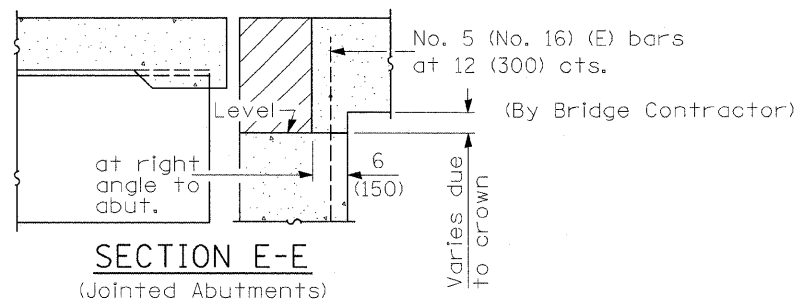


BAR a



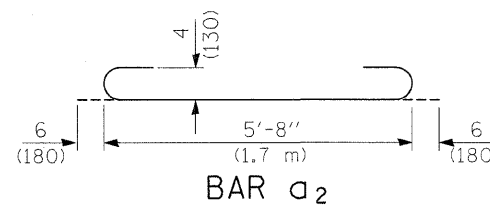
SECTION E-E

(Integral Abutments)



SECTION E-E

(Jointed Abutments)



BAR a2

DESIGN STRESSES

$f_y = 60,000$ p.s.i. (400 MPa)
 $f'_c = 3,500$ p.s.i. (24 MPa)
 $n = 8.5$

FILE NAME =	USER NAME = steffennk	DESIGNED -	REVISED -	STATE OF ILLINOIS DEPARTMENT OF TRANSPORTATION	BRIDGE APPROACH PAVEMENT DETAILS	F.A.S. RTE.	SECTION	COUNTY	TOTAL SHEETS	SHEET NO.
cd:\pw\work\PWIDOT\STEFFENMK\dms52451\at-details.74145.dgn	DRAWN -	REVISED -	1536			125BR	MACON	45	118	
PLOT SCALE = 50.0000 / IN.	CHECKED -	REVISED -	CONTRACT NO. 74145							
PLOT DATE = 10/20/2008	DATE -	REVISED -	FED. ROAD DIST. NO. ILLINOIS FED. AID PROJECT							
SCALE:						SHEET NO. OF SHEETS STA. TO STA.				