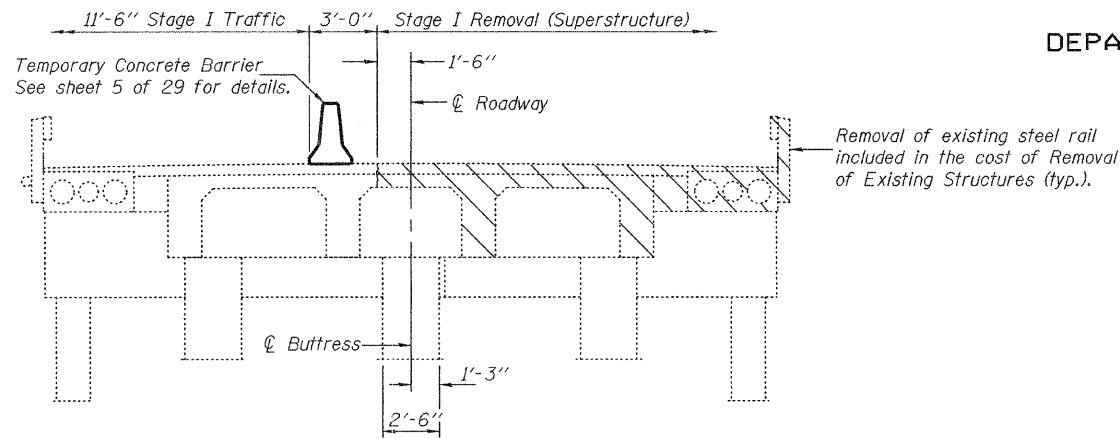


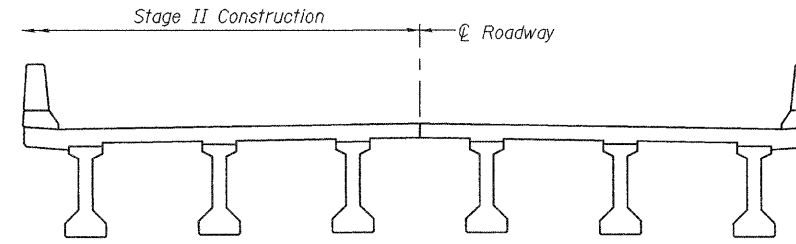
STATE OF ILLINOIS
DEPARTMENT OF TRANSPORTATION

ROUTE NO.	SECTION	COUNTY	TOTAL SHEETS	SHEET NO.	SHEET NO. 3
FAS 1536	125BR	Macon	45	15	29 SHEETS
FED. ROAD DIST. NO. 7		ILLINOIS	FED. AID PROJECT		

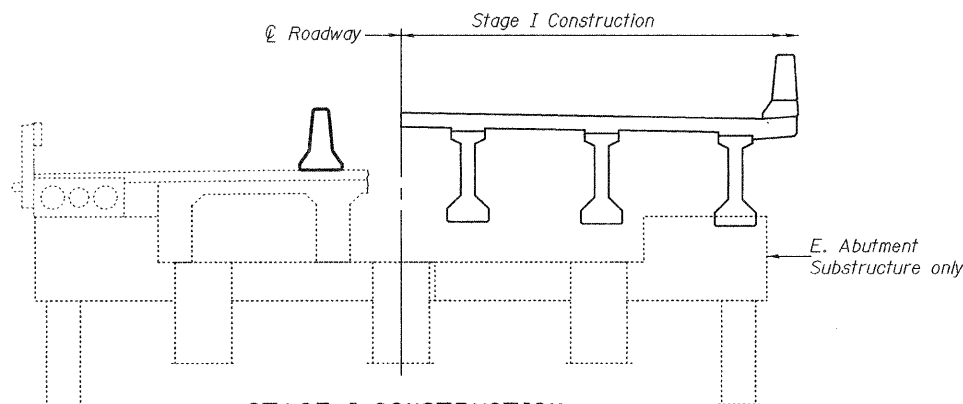
Contract #74145



STAGE I REMOVAL
(Superstructure)

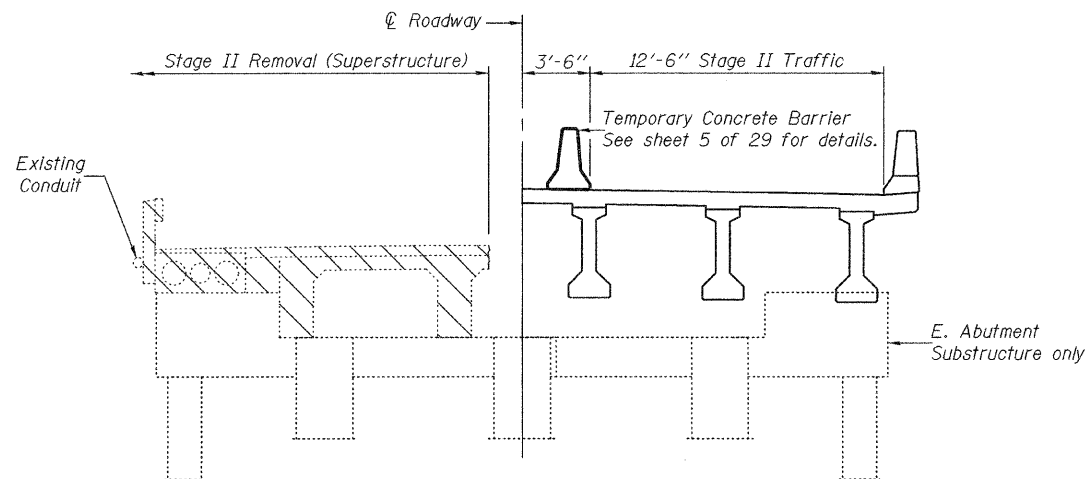


STAGE II CONSTRUCTION

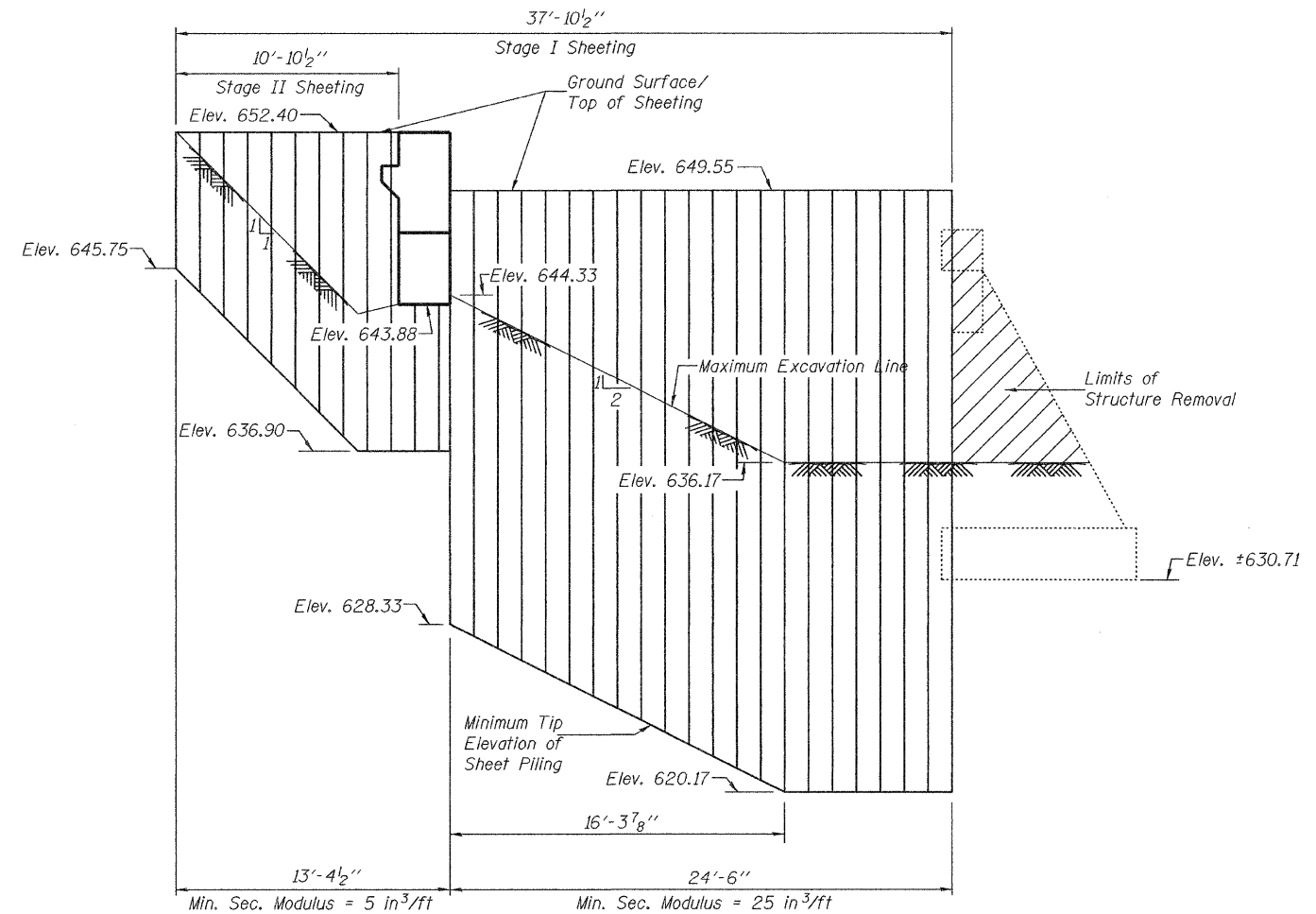


STAGE I CONSTRUCTION

Remove existing piers and existing West Abutment in each stage to the ground line. Existing East Abutment shall be removed to the elevation 647.48.



STAGE II REMOVAL
(Superstructure)



TEMPORARY SHEET PILING AT WEST ABUTMENT

If the Contractor chooses to alter the temporary cantilevered sheet piling design requirements shown on the plans, a design submittal including plan details and calculations will be required for review and acceptance by the Engineer. The Contractor shall connect the first sheet to the existing abutment wall to ensure stability of sheets driven to the top of the existing footing. This connection shall be reviewed and accepted by the Engineer and included in the cost for Temporary Sheet Piling.

STAGE CONSTRUCTION DETAILS
F.A.S. ROUTE 1536 - SEC. 125BR
MACON COUNTY
STATION 616+26.50
STRUCTURE NO. 058-0132

DESIGNED	Ray Ahanchi
CHECKED	Nick Barnett
DRAWN	BECKY M. LEACH
CHECKED	GRA & NRB

EXAMINED	Thomas J. Domagala	November 14, 2008
PASSED	Ralph E. Anderson	

Notes:
All staging cross sections are looking East.
Hatched area indicates Removal of Existing Concrete Superstructure.
For quantity of Temporary Concrete Barrier see Roadway Plans.