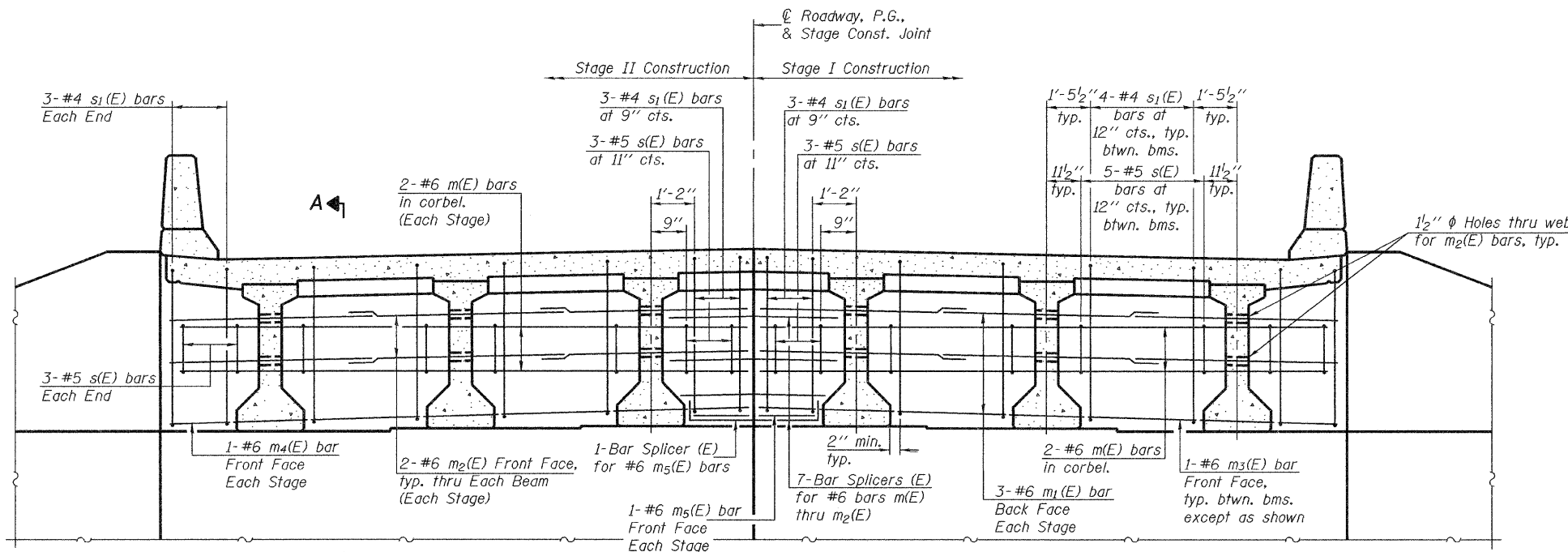


STATE OF ILLINOIS
DEPARTMENT OF TRANSPORTATION

ROUTE NO.	SECTION	COUNTY	TOTAL SHEETS	SHEET NO.	SHEET NO. 14 29 SHEETS
FAS 1536	125BR	Macon	45	26	
FED. ROAD DIST. NO. 7	ILLINOIS	FED. AID PROJECT	Contract #74145		

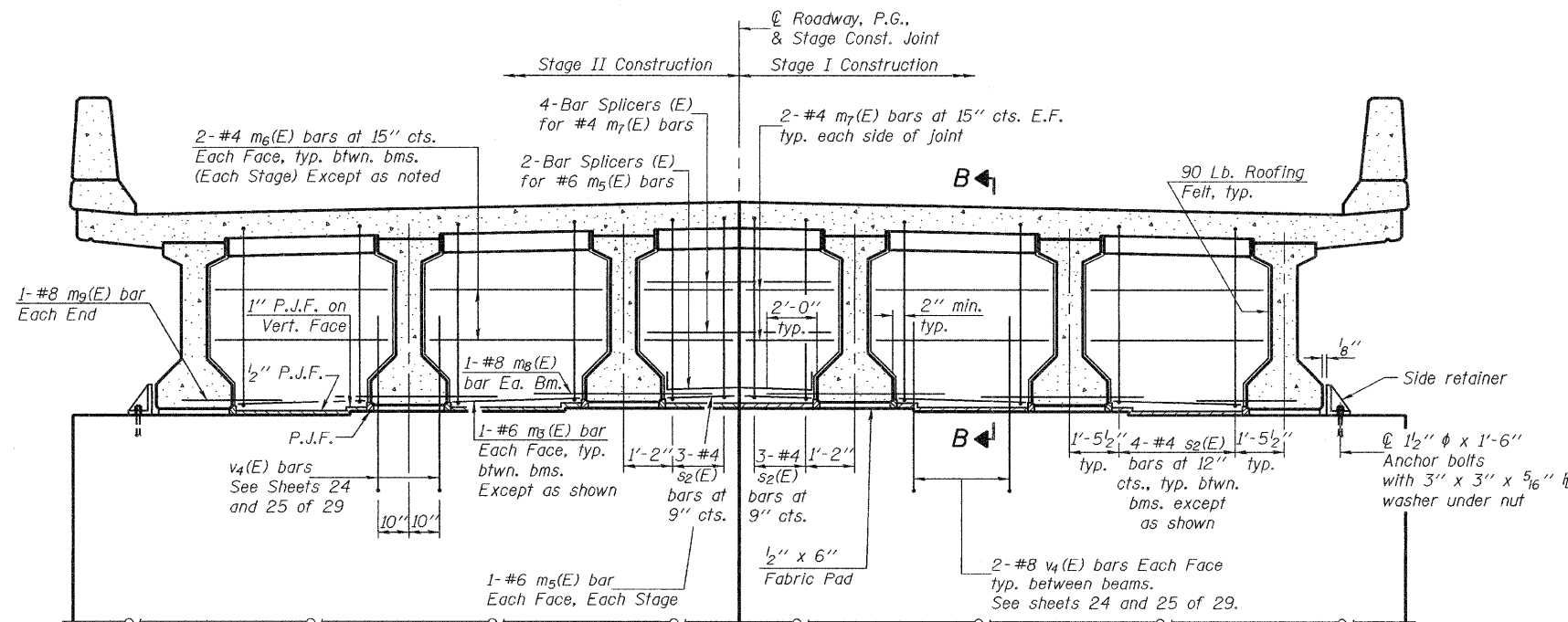


DIAPHRAGM ELEVATION AT ABUTMENT

Looking East at East Abutment
(West Abutment similar)

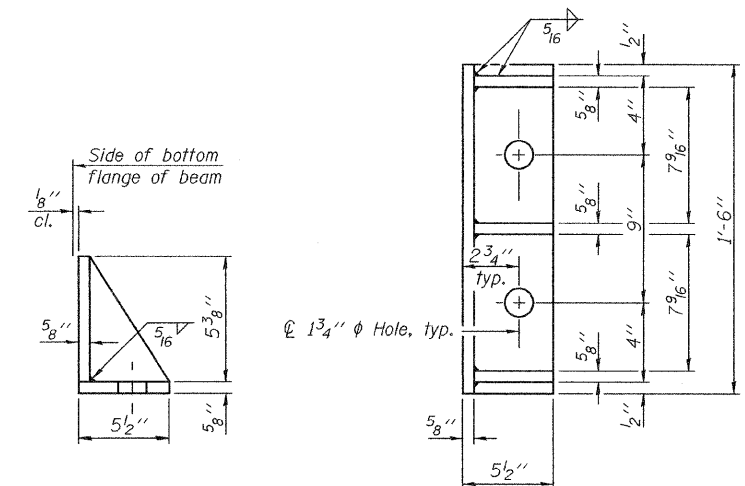
MIN. BAR LAP
#6 bar = 2'-9"

Notes:
Reinforcement bars in diaphragm are billed with superstructure on sheet 13 of 29.
Concrete in diaphragm is included with Concrete Superstructure on sheet 13 of 29.
For details of bars s(E), s1(E) and s2(E) see sheet 13 of 29.
The s(E), s1(E) and s2(E) bars shall be placed parallel to the beams. Spacing for these bars shall be at right angles to the beams. See sheet 15 of 29 for Sections A-A and B-B.
Cost of 90 Lb. roofing felt is included with Concrete Superstructure.
All embedded bearing plates, side retainers, anchor bolts, nuts and washers shall be galvanized according to AASHTO M111 or M232 (as applicable).
Anchor bolts shall be ASTM F1554 all-thread (or an Engineer-approved alternate material) of the grade(s) and diameter(s) specified. ASTM A307 Grade C anchor bolts may be used in lieu of ASTM F1554 Grade 36 (Fy=36ksi). The corresponding specified grade of AASHTO M314 anchor bolts may be used in lieu of ASTM F1554.
Anchor bolts for side retainers may be cast in place or installed in holes drilled after the supporting member is in place and prior to pouring the deck.
Drilled and set anchor bolts shall be installed according to Article 521.06 of the Standard Specifications.
Cost of side retainer and anchor bolts shall be included with Concrete Structure.



DIAPHRAGM ELEVATION AT PIER

Looking East at Pier 1
(Pier 2 similar)



SIDE RETAINER

Equivalent rolled angle with stiffeners will be allowed in lieu of welded plates.

DESIGNED	Ray Ahanchi
CHECKED	Nick Barnett
DRAWN	BECKY M. LEACH
CHECKED	GRA & NRB

November 14, 2008
EXAMINED *Thomas J. Demagala*
PASSED *Ralph E. Anderson*

DIAPHRAGM DETAILS
F.A.S. ROUTE 1536 - SEC. 125BR
MACON COUNTY
STATION 616+26.50
STRUCTURE NO. 058-0132