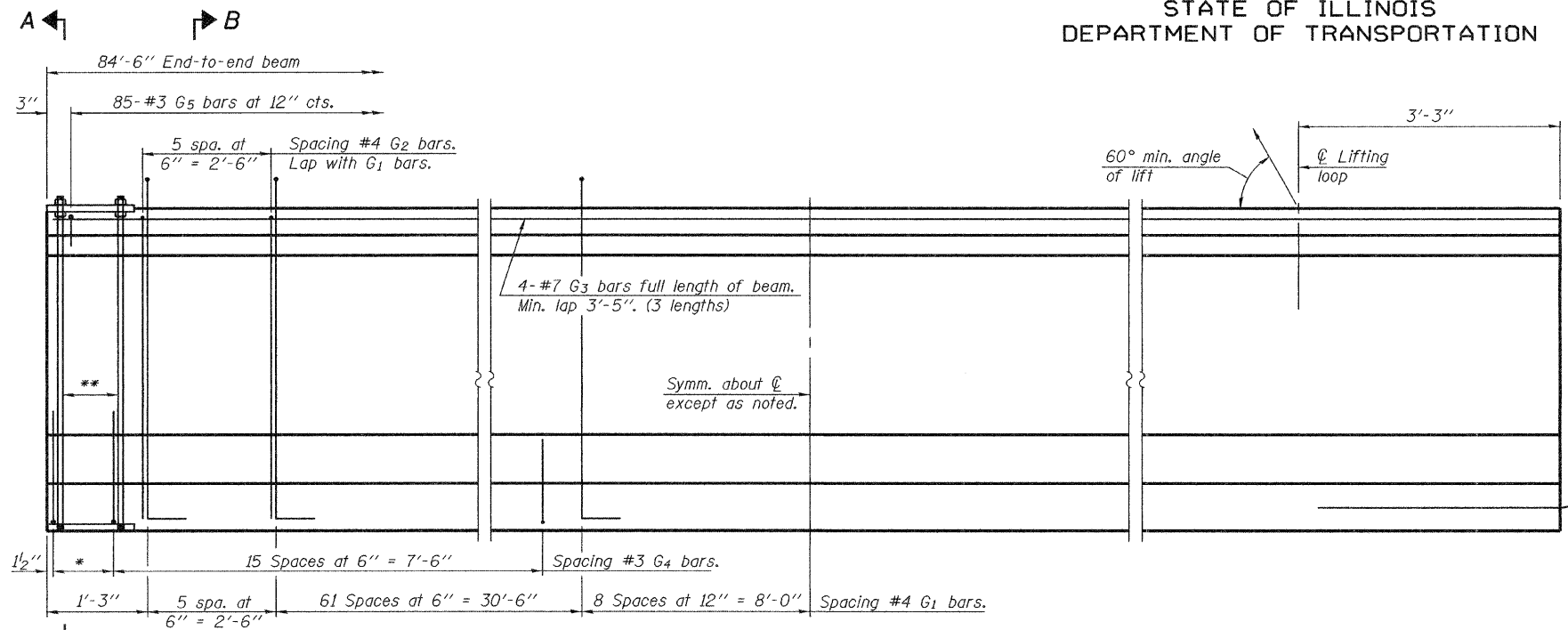


STATE OF ILLINOIS  
DEPARTMENT OF TRANSPORTATION

ROUTE NO.	SECTION	COUNTY	TOTAL SHEETS	SHEET NO.	SHEET NO. 19 29 SHEETS
FAS 1536	125BR	Macon	45	31	
FED. ROAD DIST. NO. 7		ILLINOIS	FED. AID PROJECT		

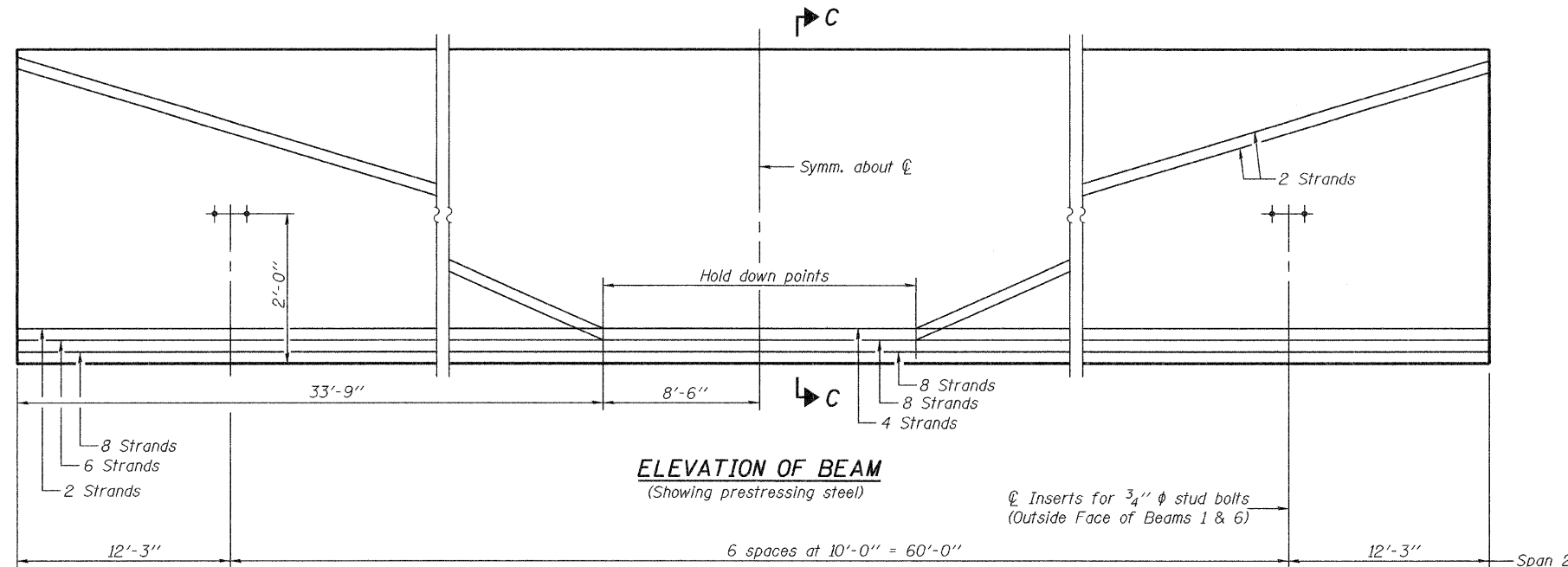
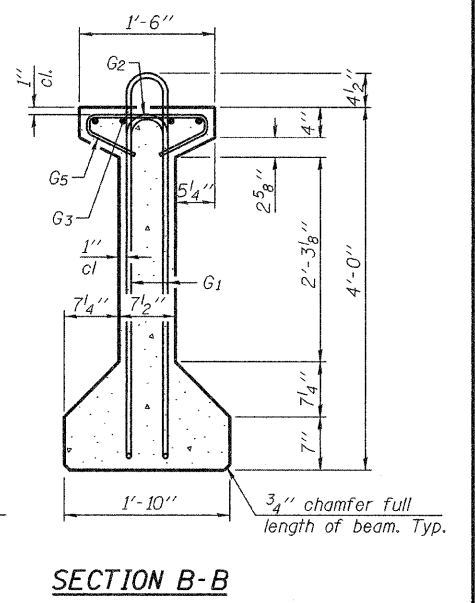
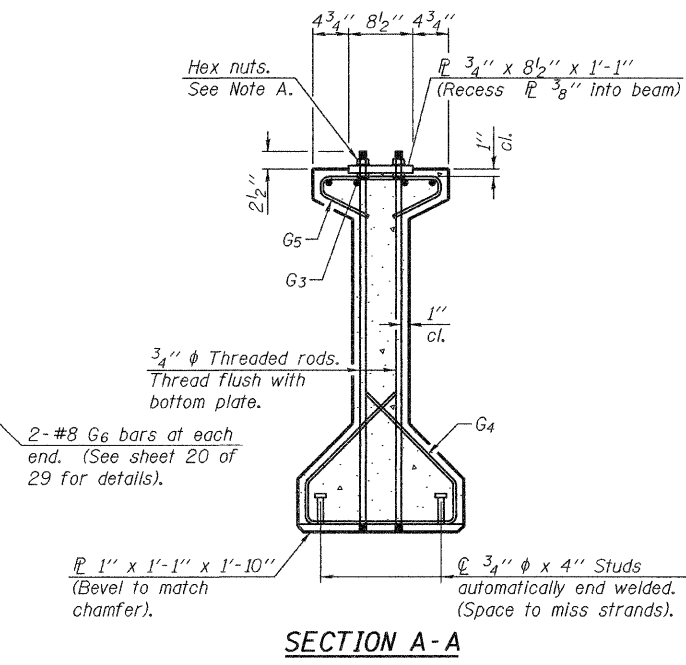
Contract #74145



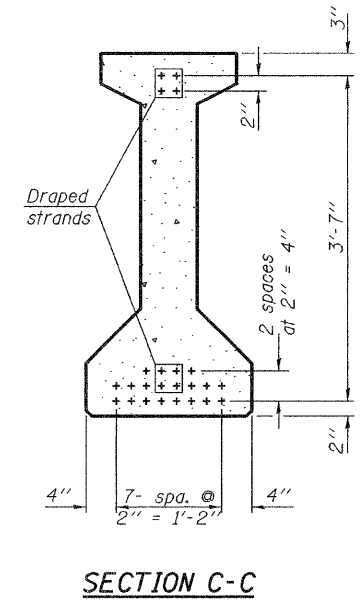
**ELEVATION OF BEAM**  
(Showing reinforcement & dimensions)

\* 3 spaces at 3" = 9".  
\*\* 4-3/4"  $\phi$  threaded dowel rods at 3" cts., each face.

Note A:  
Hex nuts (top and bottom) with lock washers (top). Only tighten sufficiently to compress lock washers.



**ELEVATION OF BEAM**  
(Showing prestressing steel)



**BAR LIST**  
**ONE BEAM ONLY**

Bar	No.	Size	Length	Shape
G <sub>1</sub>	149	#4	9'-6"	fl
G <sub>2</sub>	12	#4	7'-11"	fl
G <sub>3</sub>	12	#7	30'-5"	—
G <sub>4</sub>	38	#3	5'-3"	—
G <sub>5</sub>	85	#3	2'-9"	—
G <sub>6</sub>	4	#8	3'-9"	—

\*\*\* For information only

Notes:  
See sheet 20 of 29 for additional details and Bill of Material.  
Required release strength, f'ci, shall be 5,000 psi.

DESIGNED	Ray Ahanchi
CHECKED	Nick Barnett
DRAWN	BECKY M. LEACH
CHECKED	GRA & NRB

November 14, 2008

EXAMINED *Thomas J. Demagala*  
ENGINEER OF BRIDGE DESIGN

PASSED *Ralph E. Anderson*  
ENGINEER OF BRIDGES AND STRUCTURES

**48" PPC I-BEAM SPAN 2**  
**F.A.S. ROUTE 1536 - SEC. 125BR**  
**MACON COUNTY**  
**STATION 616+26.50**  
**STRUCTURE NO. 058-0132**