

F.A.P. RTE.	SECTION	COUNTY	TOTAL SHEETS	SHEET NO.
809	(133,134)RS-4,135RS-5	ST. CLAIR, MONROE	252	1

*252 + 56 = 308

D-98-019-02

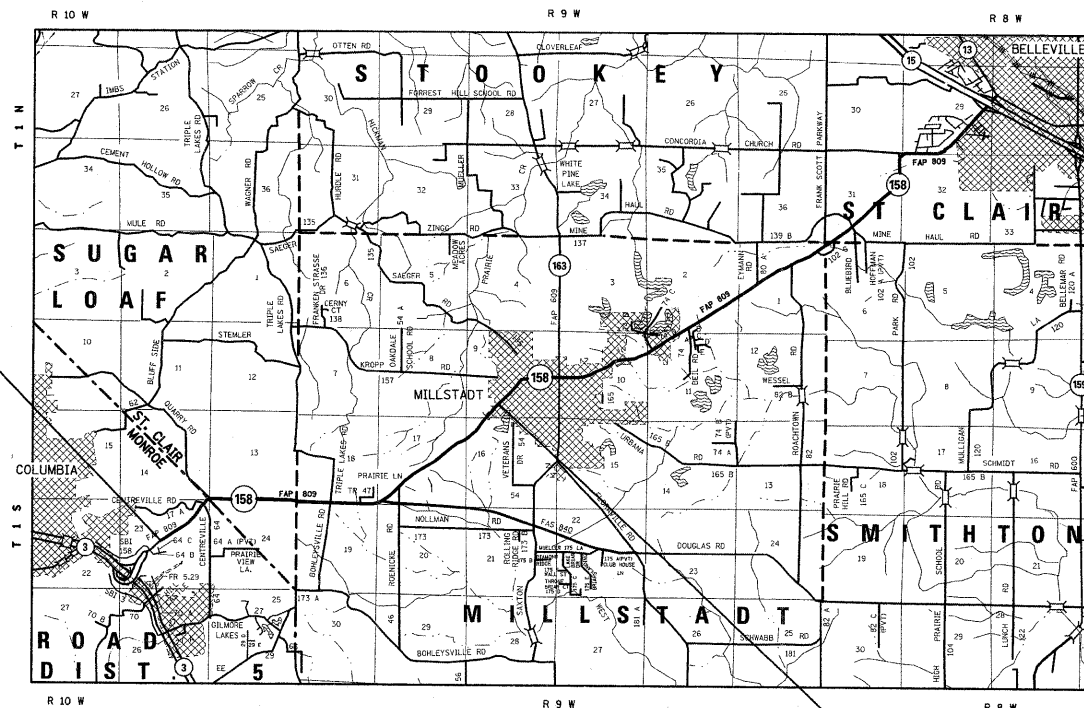
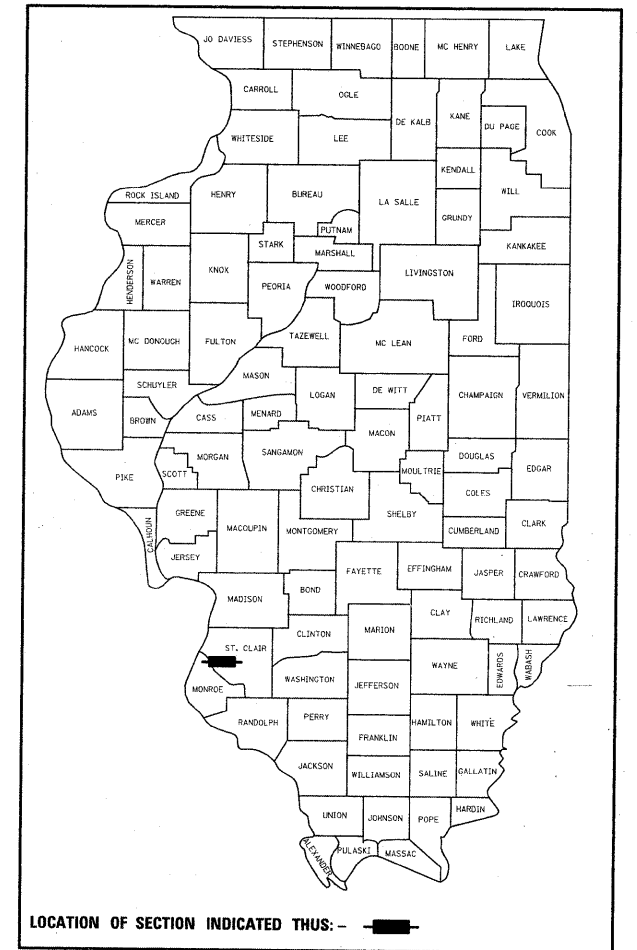
STATE OF ILLINOIS
DEPARTMENT OF TRANSPORTATION
DIVISION OF HIGHWAYS

**PROPOSED
HIGHWAY PLANS**

FAP ROUTE 809 (IL 158)
SECTION (133, 134)RS-4, 135RS-5
PROJECT: TASK-09-24-01
ST. CLAIR AND MONROE COUNTY

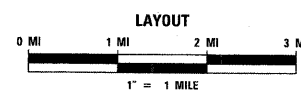
C-98-004-06

FOR INDEX OF SHEETS, SEE SHEET NO. 2

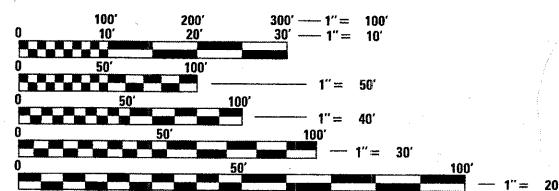


BEGIN PROJECT
STA 141+66.85
LAT: 38.50390
LONG: -90.00433

END PROJECT
STA 367+25.70
LAT: +38.45664
LONG: -90.10440



MICROFILMED _____
REEL NUMBER _____
AWARDED _____
RESIDENT ENGINEER _____
AS BUILT CHANGES WERE MADE
ON THE FOLLOWING SHEETS _____



FULL SIZE PLANS HAVE BEEN PREPARED USING STANDARD ENGINEERING SCALES. REDUCED SIZED PLANS WILL NOT CONFORM TO STANDARD SCALES. IN MAKING MEASUREMENTS ON REDUCED PLANS, THE ABOVE SCALES MAY BE USED.

J.U.L.I.E.
JOINT UTILITY LOCATION INFORMATION FOR EXCAVATION
1-800-892-0123

DESIGN DESIGNATION
MINOR ARTERIAL
OTHER PRINCIPAL ARTERIAL
CLASS III TRUCK ROUTE
CURRENT 20YR PROJECTED
ADT 9,200 (2003) ADT 16,200 (2023)
SU 500 (5.0%)
MU 300 (3.0%)

GROSS LENGTH = 22,558.85 FT = 4.27 MI
NET LENGTH = 22,558.85 FT = 4.27 MI

STATE OF ILLINOIS
DEPARTMENT OF TRANSPORTATION
DIVISION OF HIGHWAYS
SUBMITTED December 12 20 08
Mary C. Jamel
DEPUTY DIRECTOR OF HIGHWAYS
REGION FIVE ENGINEER
January 30, 20 09
Charles J. Ingersoll
ENGINEER OF DESIGN AND ENVIRONMENT
January 30, 20 09
Christine M. Reed
DIRECTOR, DIVISION OF HIGHWAYS

**PRINTED BY THE AUTHORITY
OF THE STATE OF ILLINOIS**

PROJECT ENGINEER: PATTI LEBEAU (618) 346-3179
SQUAD LEADER: CHERYL KEPLAR (618) 346-3186

CONTRACT NO. 76408