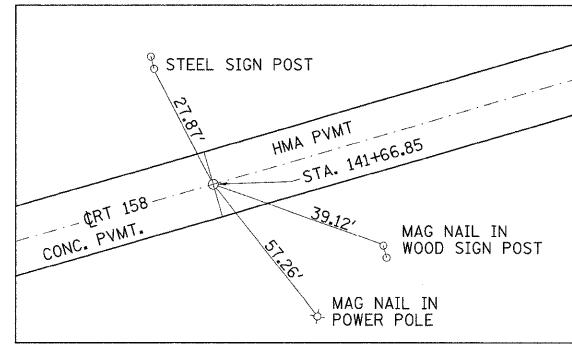
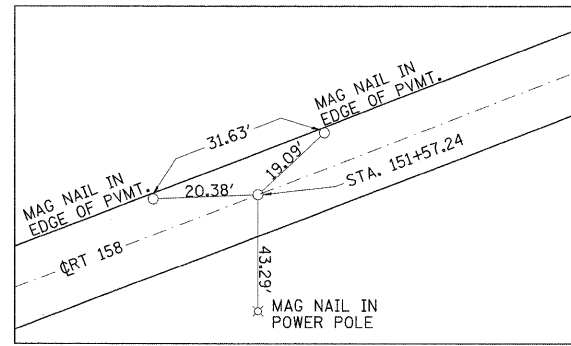


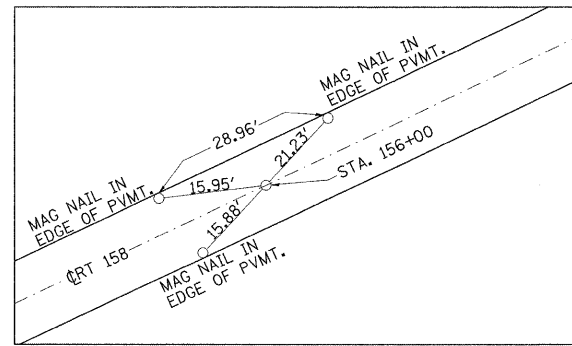
F.A.P. RTE.	SECTION	COUNTY	TOTAL SHEETS	SHEET NO.
809	133,134RS-4,135RS-5	ST. CLAIR, MONROE	252	29
STA. _____		TO STA. _____		
FED. ROAD DIST. NO. _____		ILLINOIS FED. AID PROJECT		



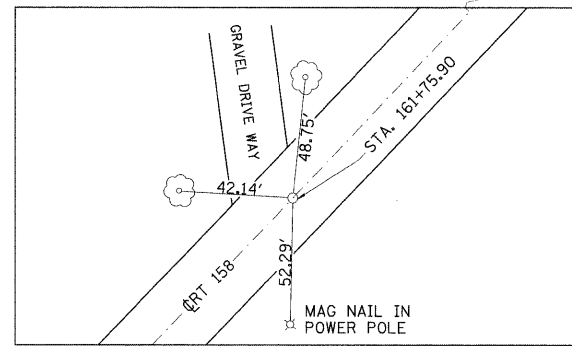
TIES TO ϕ POINT
STA. 141+66.85
MAG NAIL
N 644100.4891
E 2294932.8605



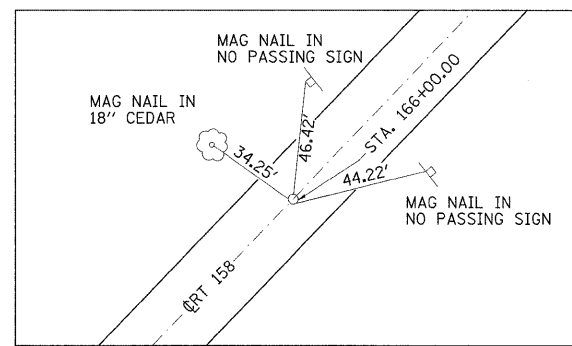
TIES TO P.C.
STA. 151+57.24
MAG NAIL
N 644577.1890
E 2295800.9836



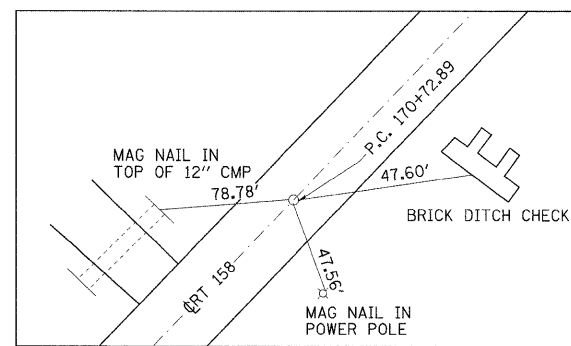
TIES TO ϕ POINT
STA. 156+00
MAG NAIL
N 644815.1389
E 2296173.9861



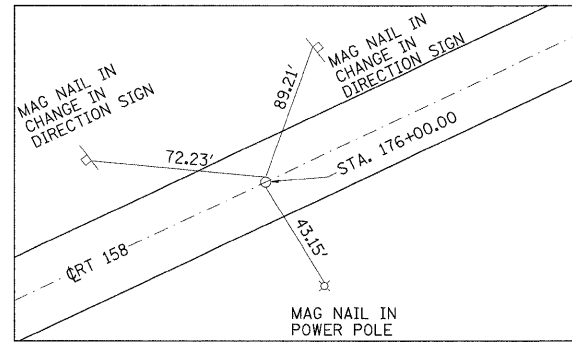
TIES TO ϕ POINT
STA. 161+75.90
MAG NAIL
N 645193.9645
E 2296606.8174



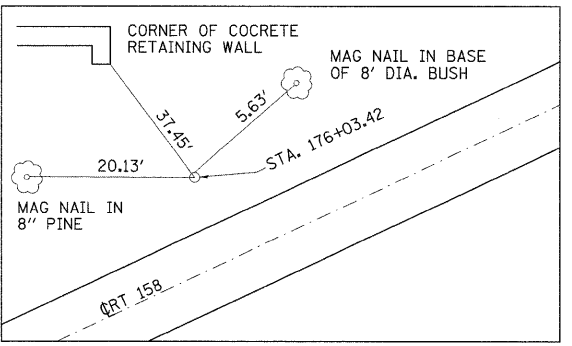
TIES TO ϕ POINT
STA. 166+00.00
MAG NAIL
N 645499.4908
E 2296900.9544



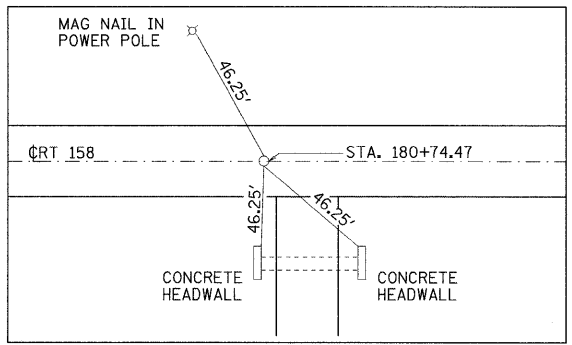
TIES TO P.C.
STA. 170+72.89
MAG NAIL
N 645840.1650
E 2297228.9274



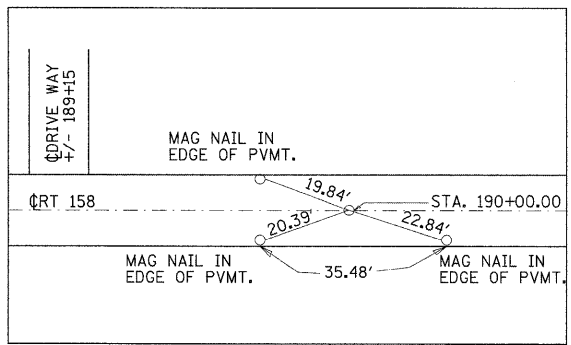
TIES TO ϕ POINT
STA. 176+00.00
MAG NAIL
N 646131.0891
E 2297663.6328



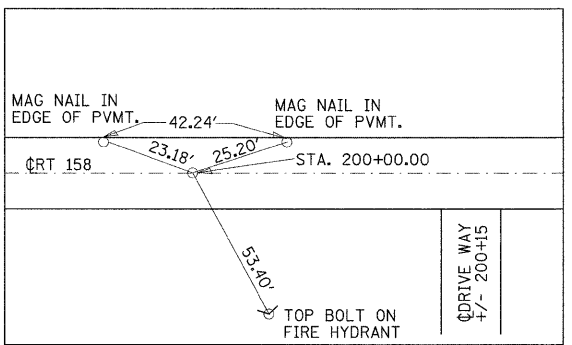
TIES TO P.I.
STA. 176+03.42
5/8" IRON PIN
N 646222.3599
E 2297596.8740



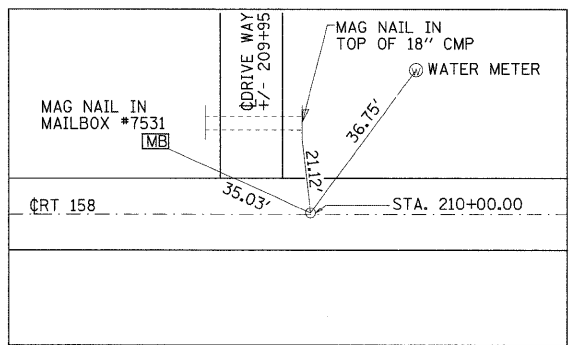
TIES TO P.T.
STA. 180+74.47
MAG NAIL
N 646216.4387
E 2298127.3668



TIES TO CL POINT
STA. 190+00.00
MAG NAIL
N 646206.1088
E 2299052.8411



TIES TO CL POINT
STA. 200+00.00
MAG NAIL
N 646194.9481
E 2300052.7788



TIES TO CL POINT
STA. 210+00.00
MAG NAIL
N 646183.7875
E 2301052.7165

REVISIONS		ILLINOIS DEPARTMENT OF TRANSPORTATION ALIGNMENT TIES & BECHMARKS FAP ROUTE 809 (IL RTE. 158) SECTION (133, 134)RS-4, 135RS-5 ST. CLAIR AND MONROE COUNTY
NAME	DATE	
		SCALE: VERT. _____ HORIZ. _____ DATE _____
DRAWN BY _____		CHECKED BY _____
DATE _____		

PLOT DATE = #DATE#
FILE NAME = #FILE#
PLOT SCALE = #SCALE#
REFERENCE = #REF#