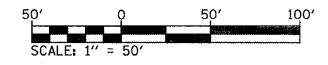
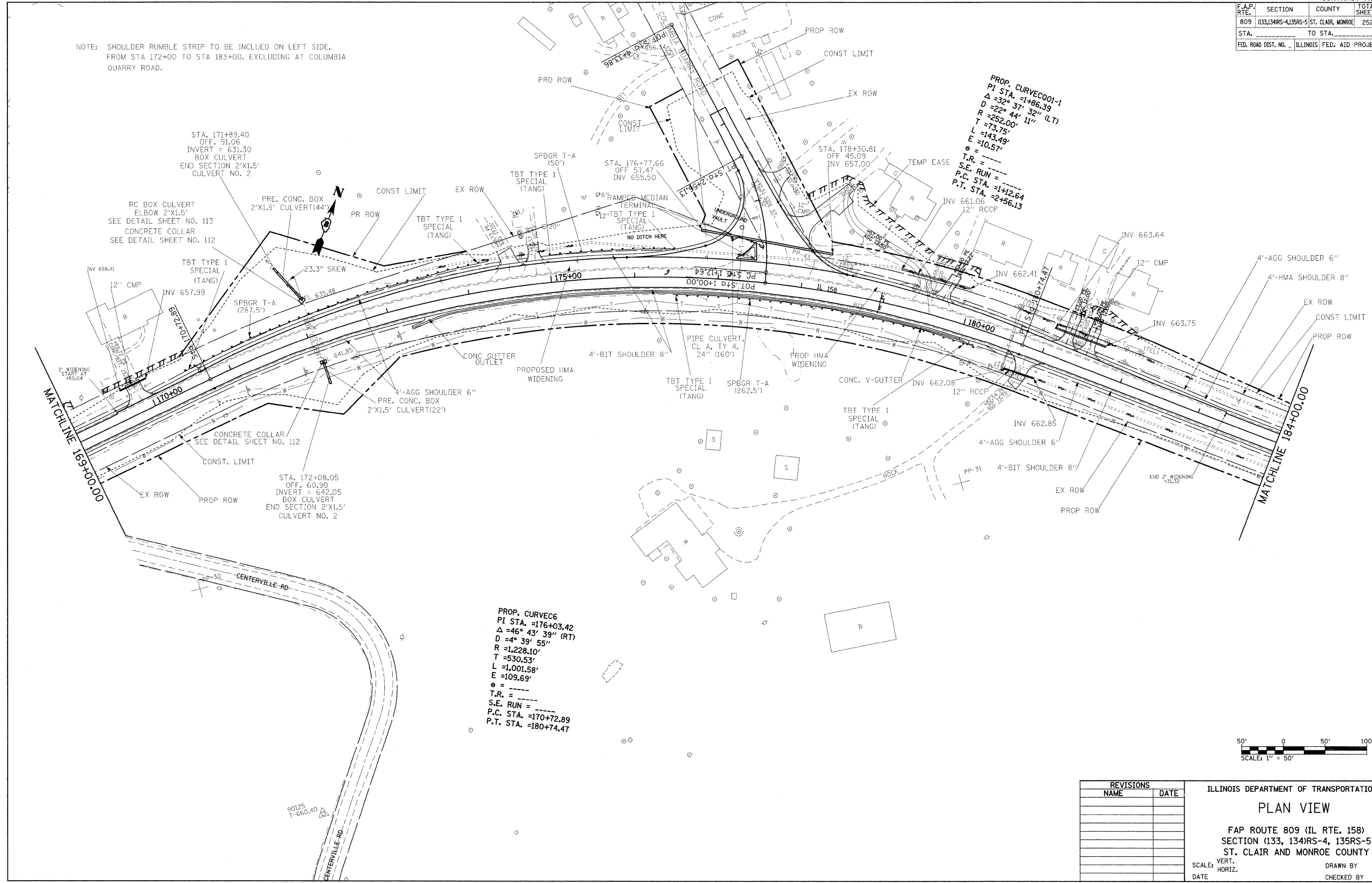


F.A.P. RTE.	SECTION	COUNTY	TOTAL SHEETS	SHEET NO.
809	(133,134)RS-4,135RS-5	ST. CLAIR, MONROE	252	39
STA. _____ TO STA. _____		FED. ROAD DIST. NO. _____ ILLINOIS FED. AID PROJECT		

NOTE: SHOULDER RUMBLE STRIP TO BE INCLUDED ON LEFT SIDE, FROM STA 172+00 TO STA 183+00. EXCLUDING AT COLUMBIA QUARRY ROAD.

PROP. CURVECQ01-1
 PI STA. =1+86.39
 $\Delta = 32^\circ 37' 32''$ (LT)
 $D = 22^\circ 37' 32''$ (LT)
 $R = 252.00'$
 $T = 73.75'$
 $L = 143.49'$
 $E = 10.57'$
 $e =$
 $T.R. =$
 $S.E. RUN =$
 $P.C. STA. = 1+12.64$
 $P.T. STA. = 2+56.13$

PROP. CURVEC6
 PI STA. =176+03.42
 $\Delta = 46^\circ 43' 39''$ (RT)
 $D = 4^\circ 39' 55''$
 $R = 1,228.10'$
 $T = 530.53'$
 $L = 1,001.58'$
 $E = 109.69'$
 $e =$
 $T.R. =$
 $S.E. RUN =$
 $P.C. STA. = 170+72.89$
 $P.T. STA. = 180+74.47$



REVISIONS	
NAME	DATE

ILLINOIS DEPARTMENT OF TRANSPORTATION
PLAN VIEW
 FAP ROUTE 809 (IL RTE. 158)
 SECTION (133, 134)RS-4, 135RS-5
 ST. CLAIR AND MONROE COUNTY
 SCALE: VERT. _____ HORIZ. _____
 DATE _____ DRAWN BY _____
 CHECKED BY _____

PLOT DATE = #DATE#
 FILE NAME = #FILE#
 PLOT SCALE = #SCALE#
 USER NAME = #USER#