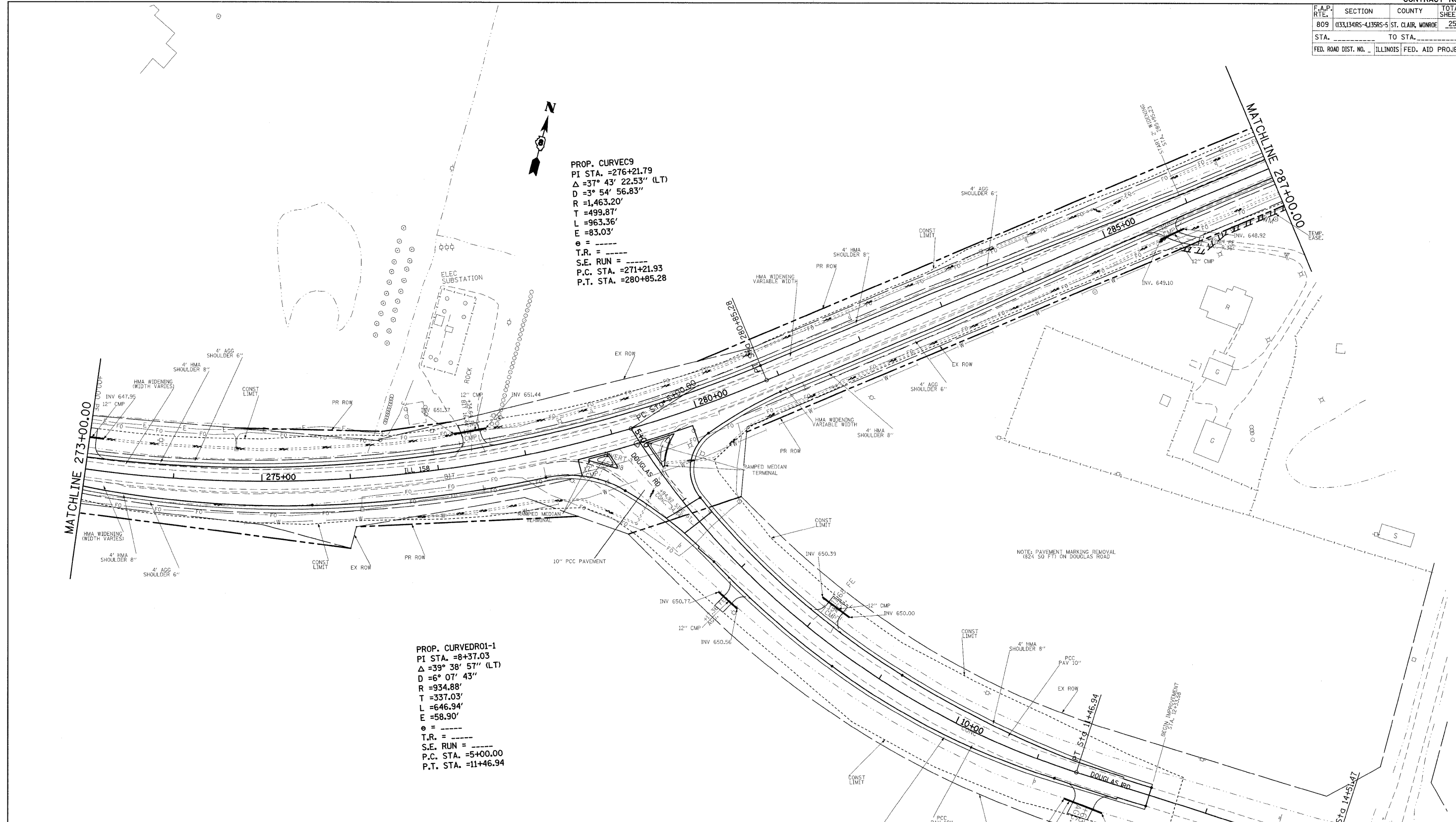


F.A.P. RTE.	SECTION	COUNTY	TOTAL SHEETS	SHEET NO.
809	(133,134)RS-4,135RS-5	ST. CLAIR, MONROE	252	46
STA.		TO STA.		
FED. ROAD DIST. NO.		ILLINOIS	FED. AID PROJECT	

PROP. CURVEC9
 PI STA. =276+21.79
 $\Delta = 37^\circ 43' 22.53''$ (LT)
 $D = 3^\circ 54' 56.83''$
 $R = 1,463.20'$
 $T = 499.87'$
 $L = 963.36'$
 $E = 83.03'$
 $e = \text{---}$
 $T.R. = \text{---}$
 $S.E. RUN = \text{---}$
 $P.C. STA. = 271+21.93$
 $P.T. STA. = 280+85.28$

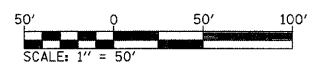
PROP. CURVEDR01-1
 PI STA. =8+37.03
 $\Delta = 39^\circ 38' 57''$ (LT)
 $D = 6^\circ 07' 43''$
 $R = 934.88'$
 $T = 337.03'$
 $L = 646.94'$
 $E = 58.90'$
 $e = \text{---}$
 $T.R. = \text{---}$
 $S.E. RUN = \text{---}$
 $P.C. STA. = 5+00.00$
 $P.T. STA. = 11+46.94$



NOTE: PAVEMENT MARKING REMOVAL (824 SD F) ON DOUGLAS ROAD

REVISIONS	
NAME	DATE

ILLINOIS DEPARTMENT OF TRANSPORTATION
PLAN VIEW
 FAP ROUTE 809 (IL RTE. 158)
 SECTION (133, 134)RS-4, 135RS-5
 ST. CLAIR AND MONROE COUNTY
 SCALE: VERT. _____
 DATE _____ HORIZ. _____
 DRAWN BY _____
 CHECKED BY _____



PLOT DATE = #DATE#
 FILE NAME = #FILE#
 PLOT SCALE = #SCALE#
 USER NAME = #USER#