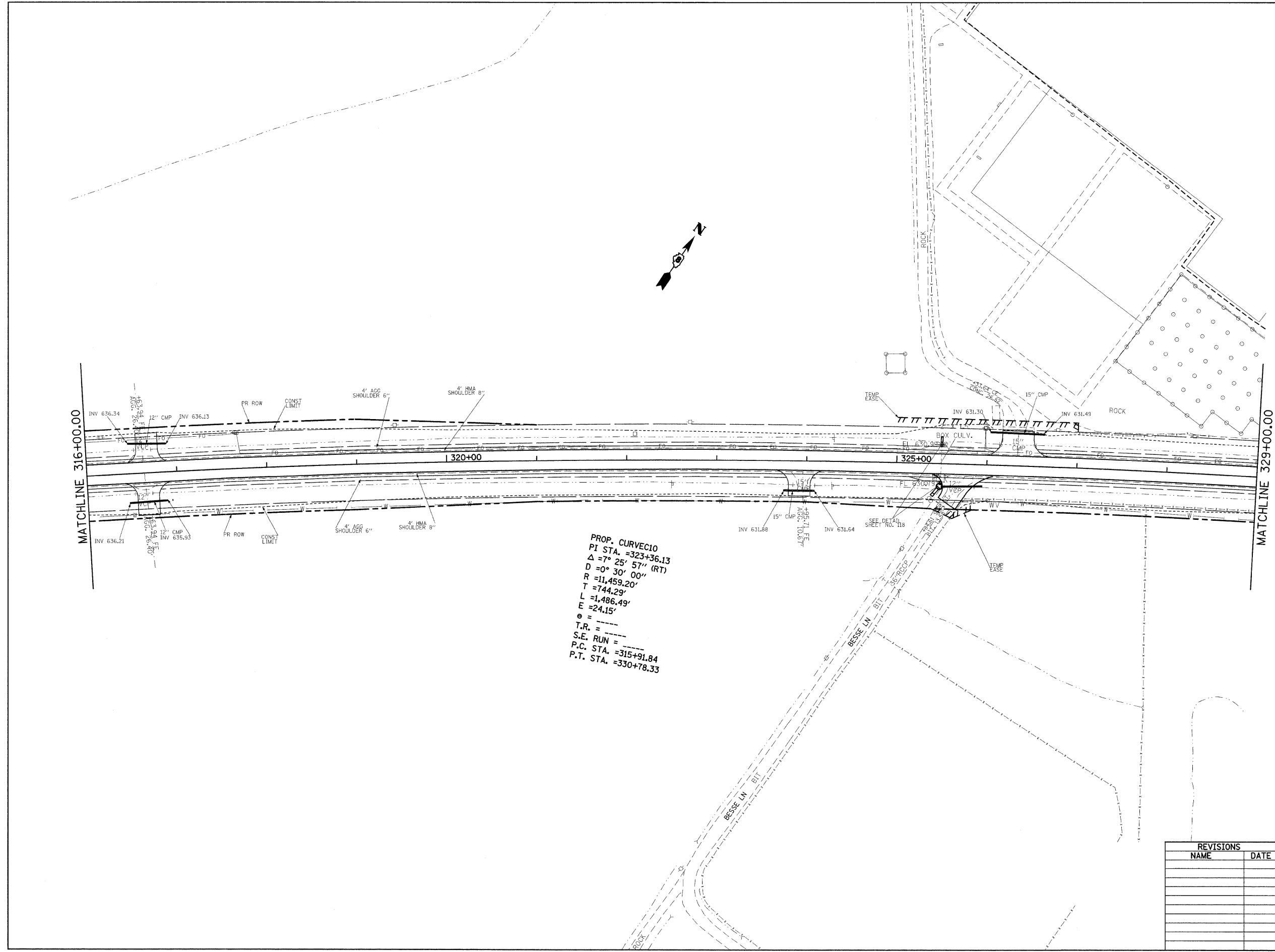
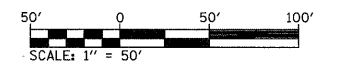


F.A.P. RTE.	SECTION	COUNTY	TOTAL SHEETS	SHEET NO.
809	(133,134)RS-4, 135RS-5	ST. CLAIR, MONROE	252	49
STA. _____		TO STA. _____		
FED. ROAD DIST. NO. _____		ILLINOIS FED. AID PROJECT		



PROP. CURVE C10
 PI STA. = 323+36.13
 $\Delta = 7^\circ 25' 57''$ (RT)
 D = 0° 30' 00"
 R = 11,459.20'
 T = 744.29'
 L = 1,486.49'
 E = 24.15'
 e = _____
 T.R. = _____
 S.E. RUN = _____
 P.C. STA. = 315+91.84
 P.T. STA. = 330+78.33



REVISIONS	
NAME	DATE

ILLINOIS DEPARTMENT OF TRANSPORTATION
PLAN VIEW
 FAP ROUTE 809 (IL RTE. 158)
 SECTION (133, 134)RS-4, 135RS-5
 ST. CLAIR AND MONROE COUNTY
 SCALE: VERT. _____
 HORIZ. _____
 DATE _____ DRAWN BY _____
 CHECKED BY _____

PLOT DATE = #DATE#
 FILE NAME = #FILE#
 PLOT SCALE = #SCALE#
 USER NAME = #USER#