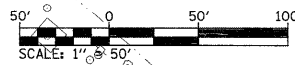
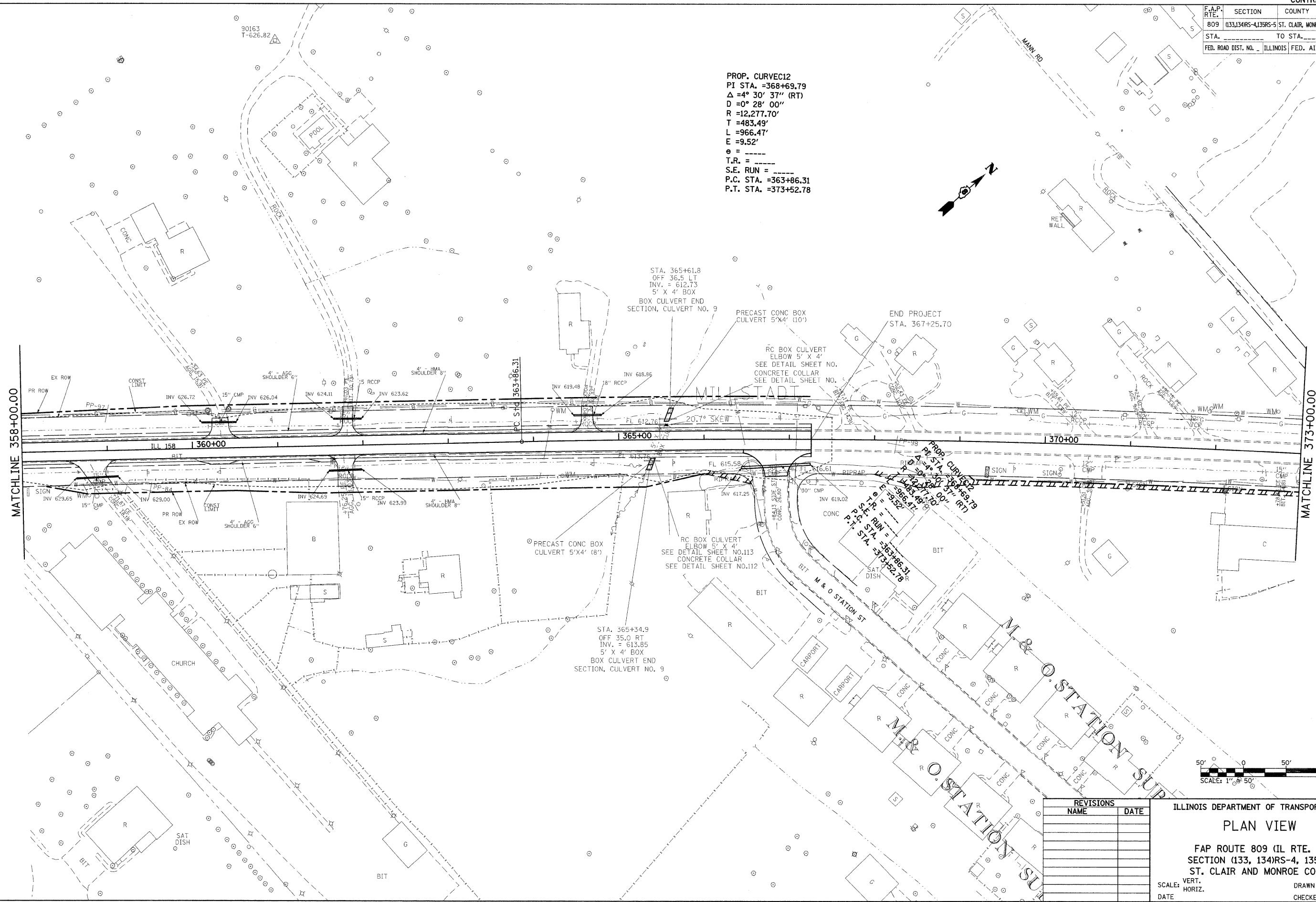
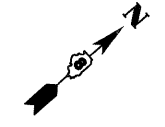


F.A.P. RTE.	SECTION	COUNTY	TOTAL SHEETS	SHEET NO.
809	133,134RS-4, 135RS-5	ST. CLAIR, MONROE	252	52
STA.		TO STA.		
FED. ROAD DIST. NO.		ILLINOIS FED. AID PROJECT		

PROP. CURVEC12
 PI STA. =368+69.79
 $\Delta = 4^\circ 30' 37''$ (RT)
 $D = 0^\circ 28' 00''$
 $R = 12,277.70'$
 $T = 483.49'$
 $L = 966.47'$
 $E = 9.52'$
 $\theta =$
 $T.R. =$
 $S.E. RUN =$
 P.C. STA. =363+86.31
 P.T. STA. =373+52.78



REVISIONS	
NAME	DATE

ILLINOIS DEPARTMENT OF TRANSPORTATION
PLAN VIEW
 FAP ROUTE 809 (IL RTE. 158)
 SECTION (133, 134RS-4, 135RS-5)
 ST. CLAIR AND MONROE COUNTY
 SCALE: VERT. _____
 HORIZ. _____
 DATE _____
 DRAWN BY _____
 CHECKED BY _____

PLOT DATE = #DATE#
 FILE NAME = #FILE#
 PLOT SCALE = #SCALE#
 USER NAME = #USER#