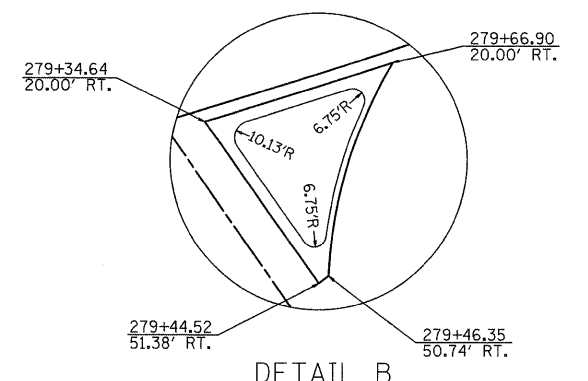
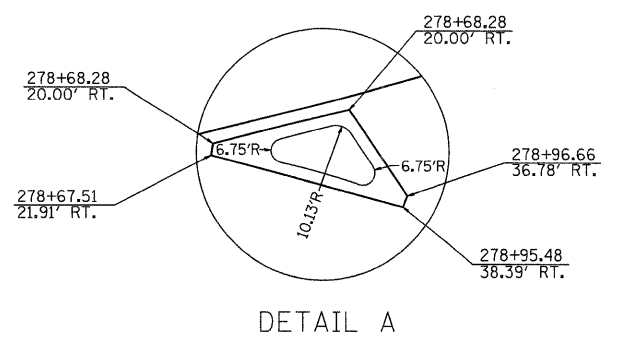
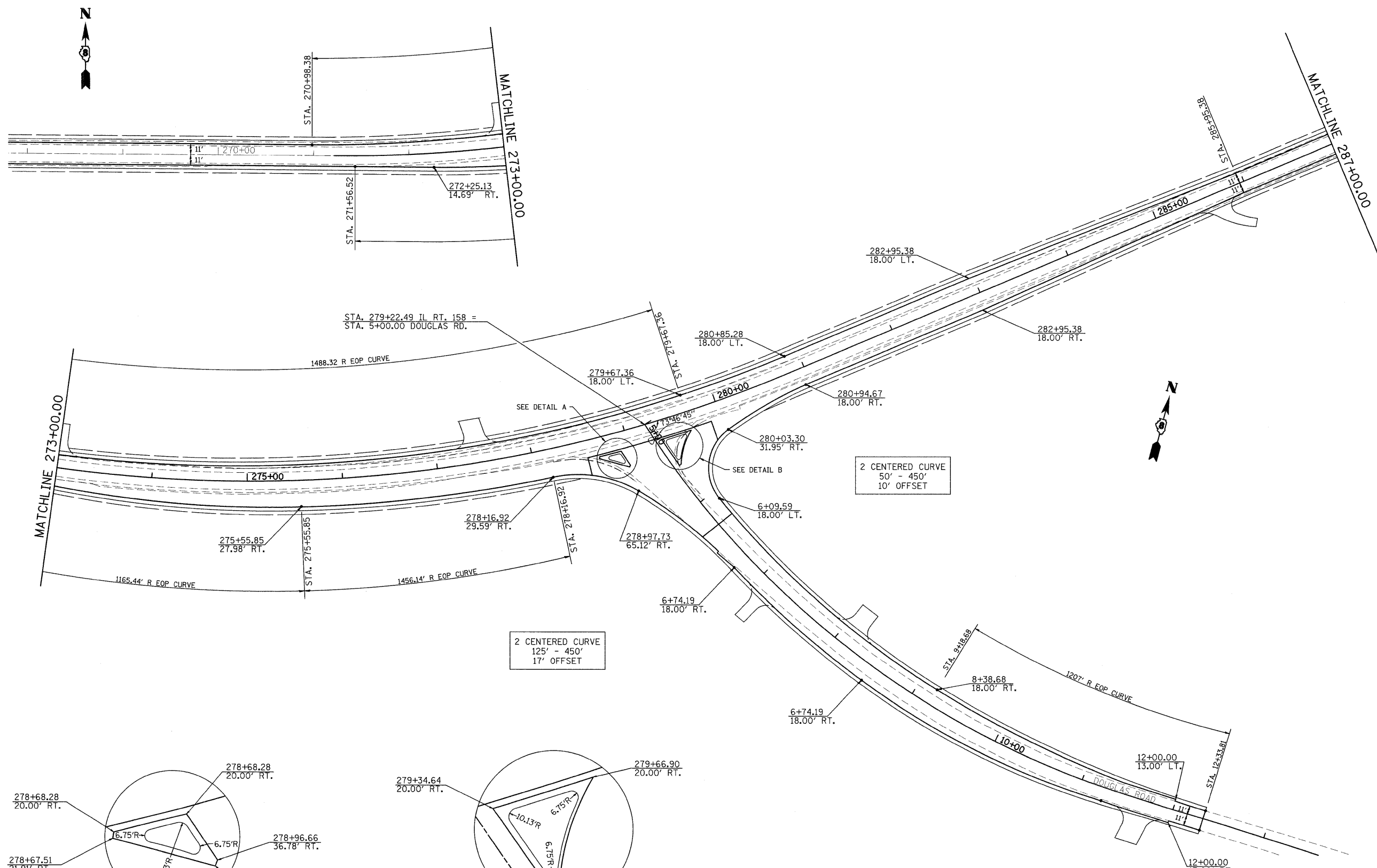


F.A.P. RTE.	SECTION	COUNTY	TOTAL SHEETS	SHEET NO.
809	(133,134)RS-4,135RS-5	ST. CLAIR, MONROE	252	55
STA. _____		TO STA. _____		
FED. ROAD DIST. NO. _____		ILLINOIS FED. AID PROJECT		

PLAN	DATE
SURVEYED	BY
DESIGNED	BY
CHECKED	BY
IN CHARGE	BY
NOTE BOOK NO.	
PROJECT FILE NAME	



REVISIONS	
NAME	DATE

ILLINOIS DEPARTMENT OF TRANSPORTATION  
**DOUGLAS RD.  
 INTERSECTION DETAIL**  
 FAP ROUTE 809 (IL RTE. 158)  
 SECTION (133, 134)RS-4, 135RS-5  
 ST. CLAIR AND MONROE COUNTY

DRAWN BY:  
 PLOT DATE: 1/7/2009

1/7/2009  
 c:\pwworking\DOT\KARLASA\dms51258\geom\76408\101302.dgn  
 PLOT