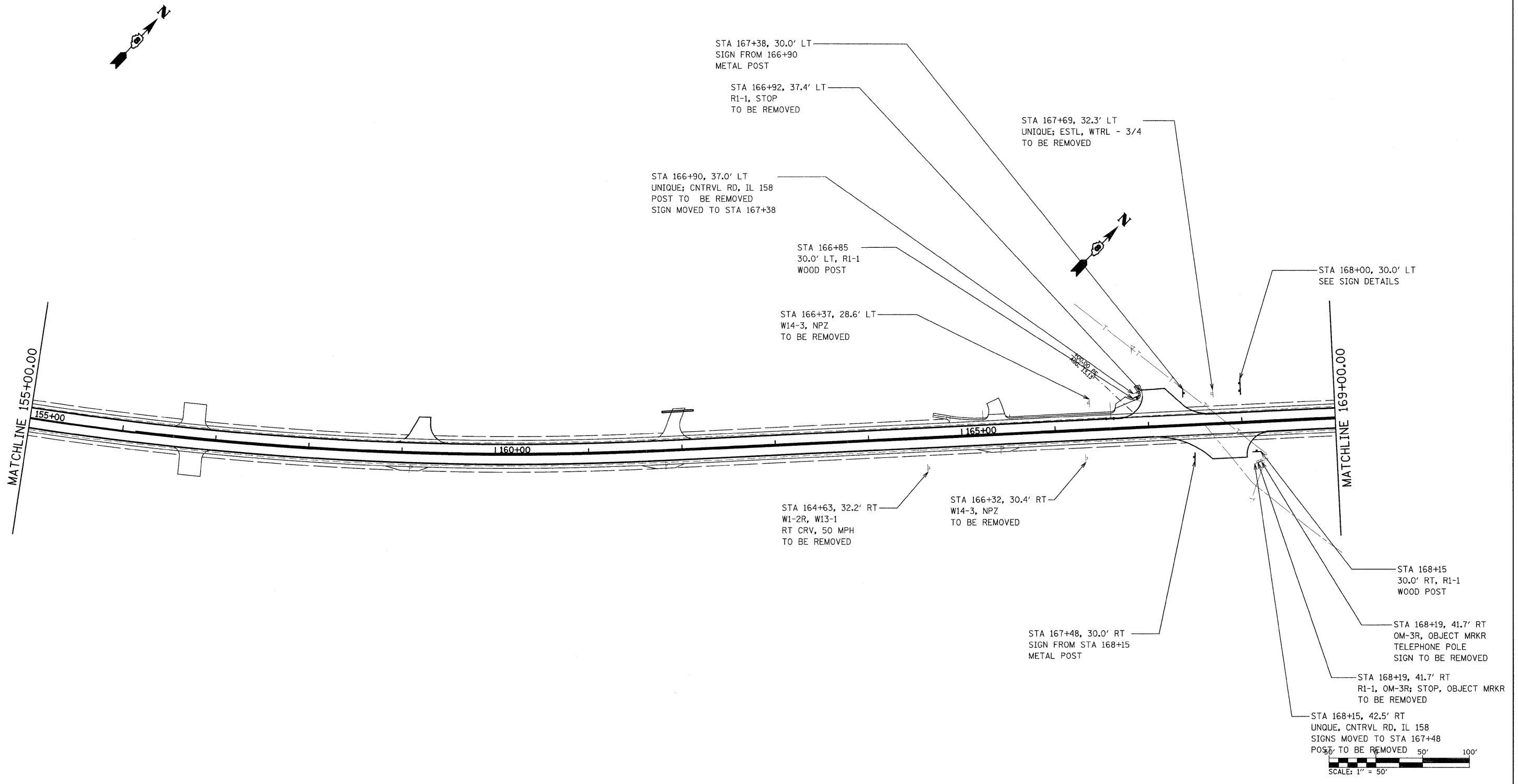


F.A.P. RTE.	SECTION	COUNTY	TOTAL SHEETS	SHEET NO.
809	(133,134)RS-4,135RS-5	ST. CLAIR, MONROE	252	73
STA. _____ TO STA. _____		FED. ROAD DIST. NO. _____ ILLINOIS FED. AID PROJECT _____		



OFFSETS FOR NEW SIGNS ARE MEASURED TO THE EDGE OF THE PANEL OR POST, WHICHEVER IS CLOSER

#DATE# = #DATE#  
 #FILE# = #FILE#  
 #SCALE# = #SCALE#  
 #USER# = #USER#

REVISIONS	
NAME	DATE

ILLINOIS DEPARTMENT OF TRANSPORTATION  
**SIGNING DETAILS**  
 FAP ROUTE 809 (IL RTE. 158)  
 SECTION (133, 134)RS-4, 135RS-5  
 ST. CLAIR AND MONROE COUNTY

SCALE: VERT. \_\_\_\_\_  
 DATE \_\_\_\_\_ HORIZ. \_\_\_\_\_

DRAWN BY \_\_\_\_\_  
 CHECKED BY \_\_\_\_\_